



Fig. S1. Agarose gel electrophoresis of total RNA

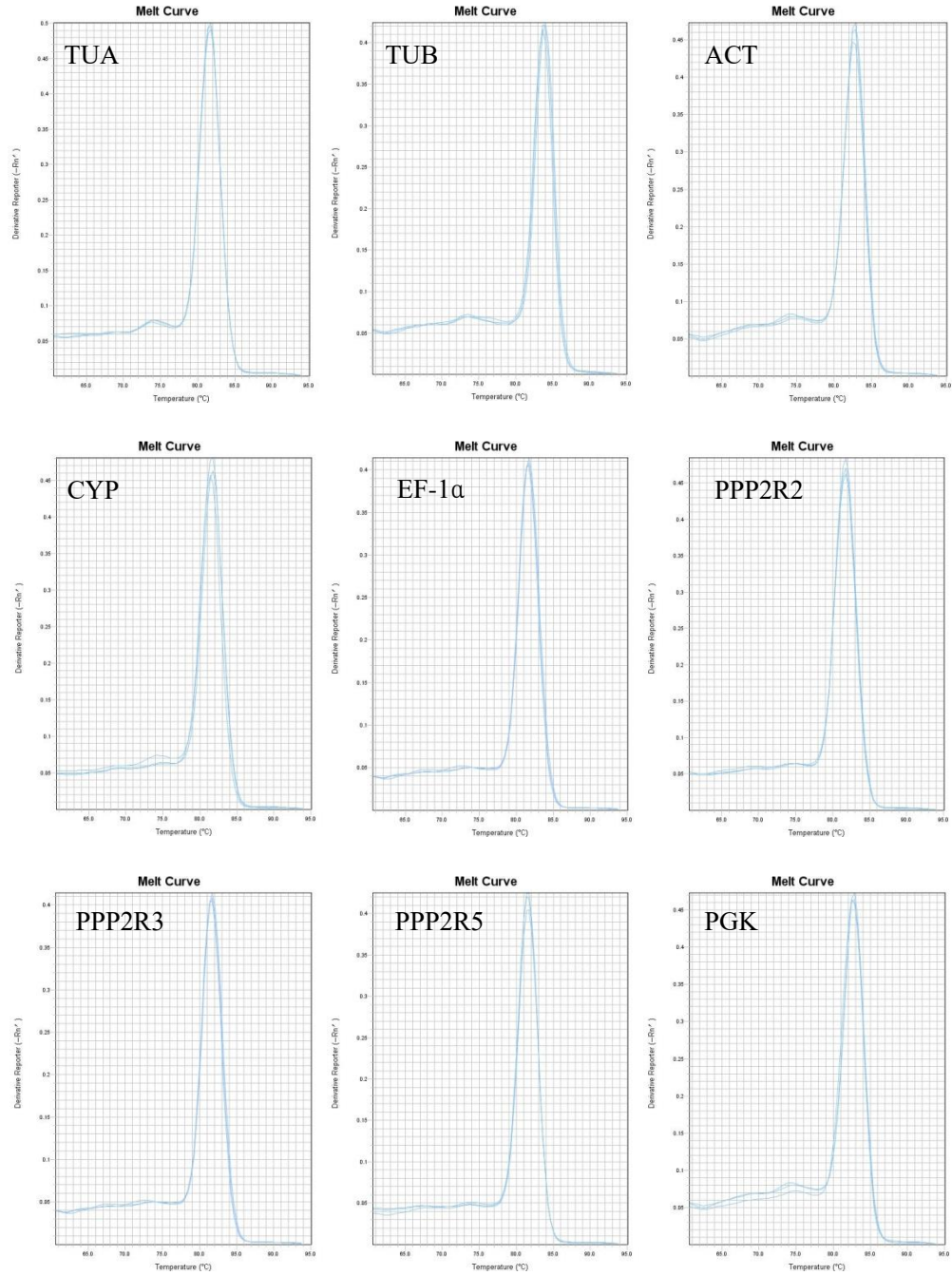


Fig. S2. Melting curve analysis of 9 reference genes in *A. venetum*

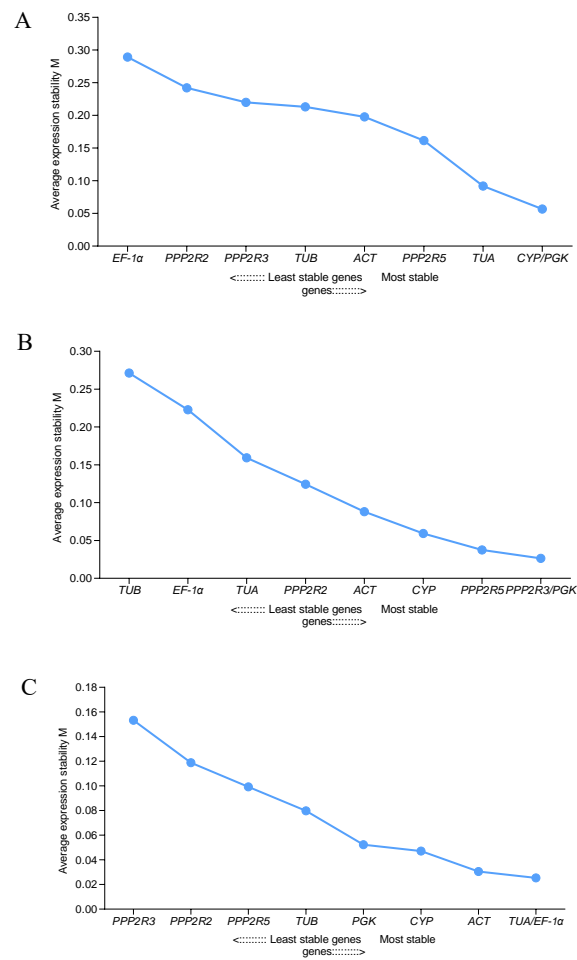


Fig. S3. Expressional stability of candidate reference genes made by geNorm analysis (A) leave (B) stems(C) root

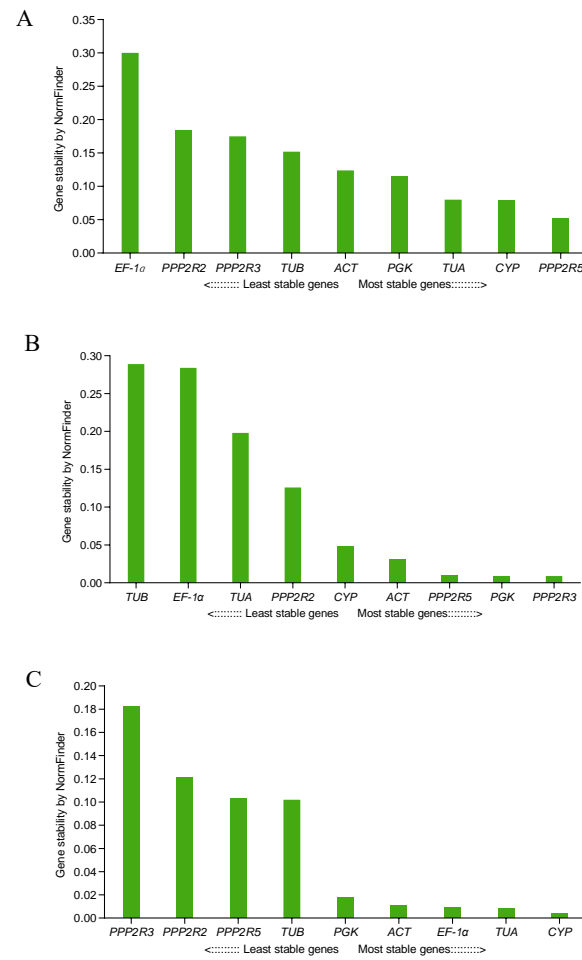


Fig. S4. Expressional stability of candidate reference genes made by NormFinder analysis  
(A) leaf (B) stems(C) root

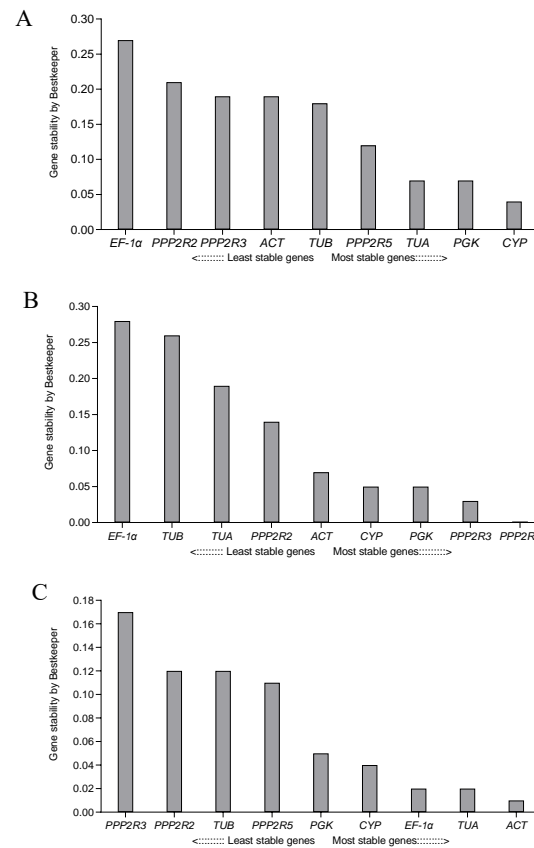


Fig. S5. Expressional stability of candidate reference genes made by BestKeeper analysis  
(A) leave (B) stems(C) root