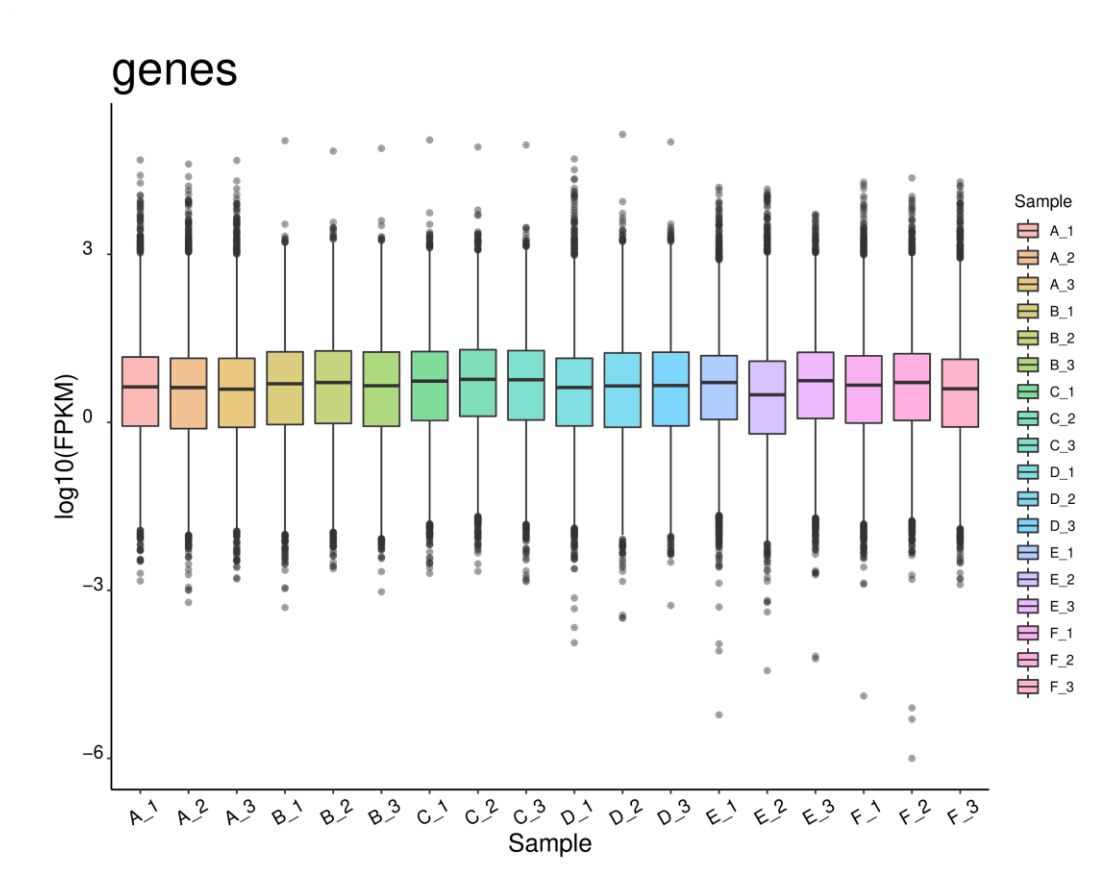
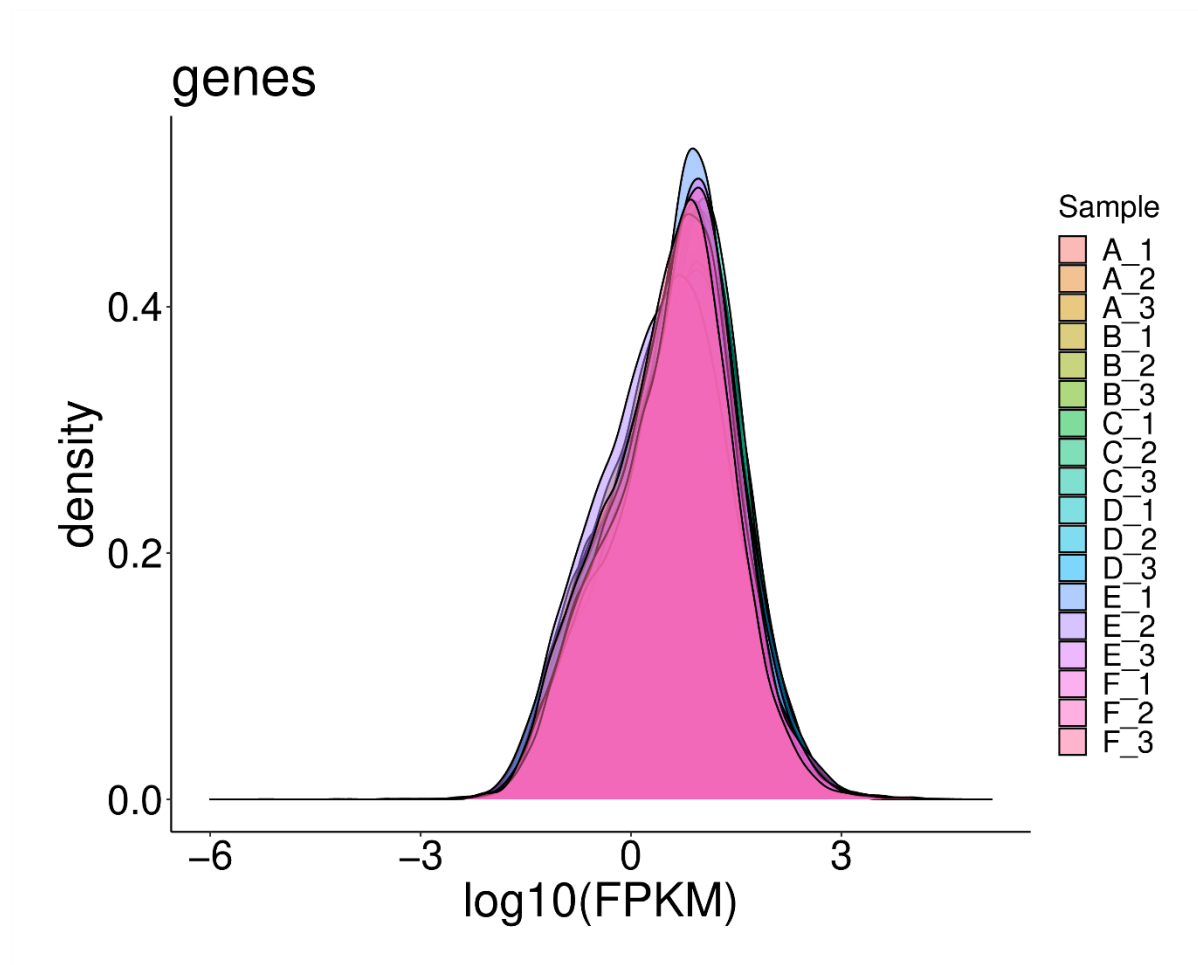


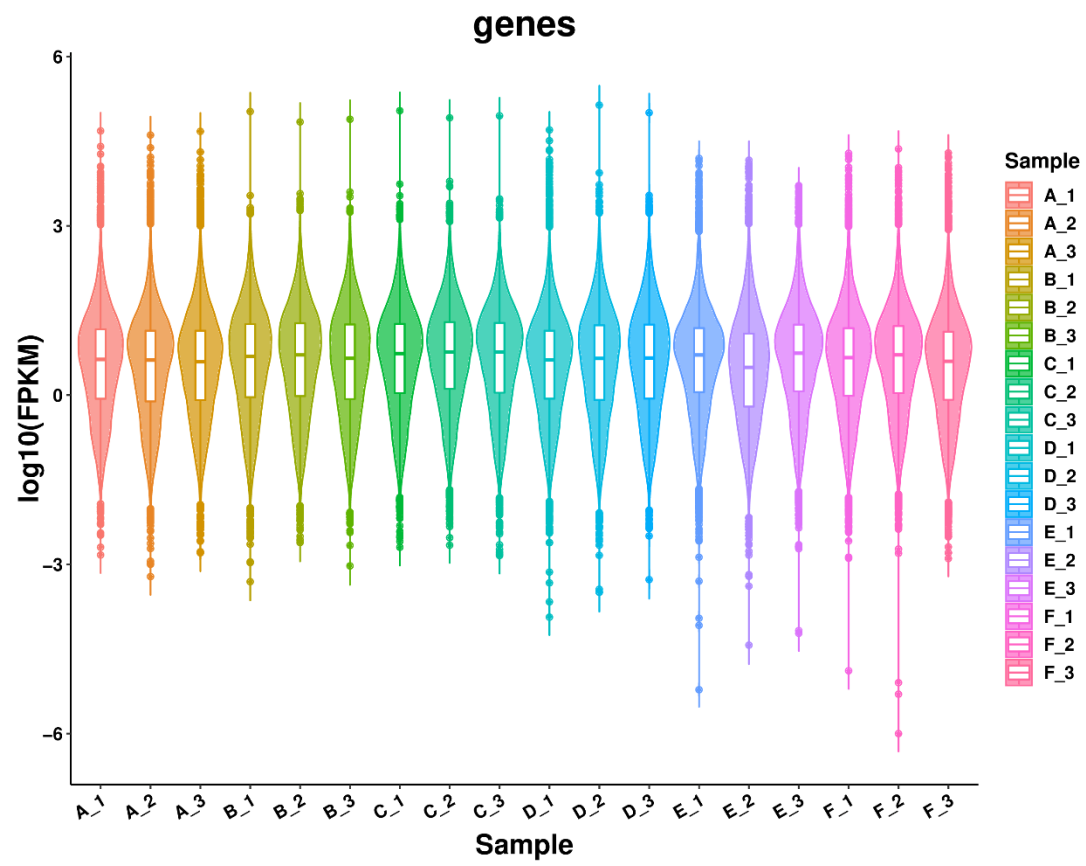
Supplemental Figure S1. The statistics of gene mapped regions in 18 samples.



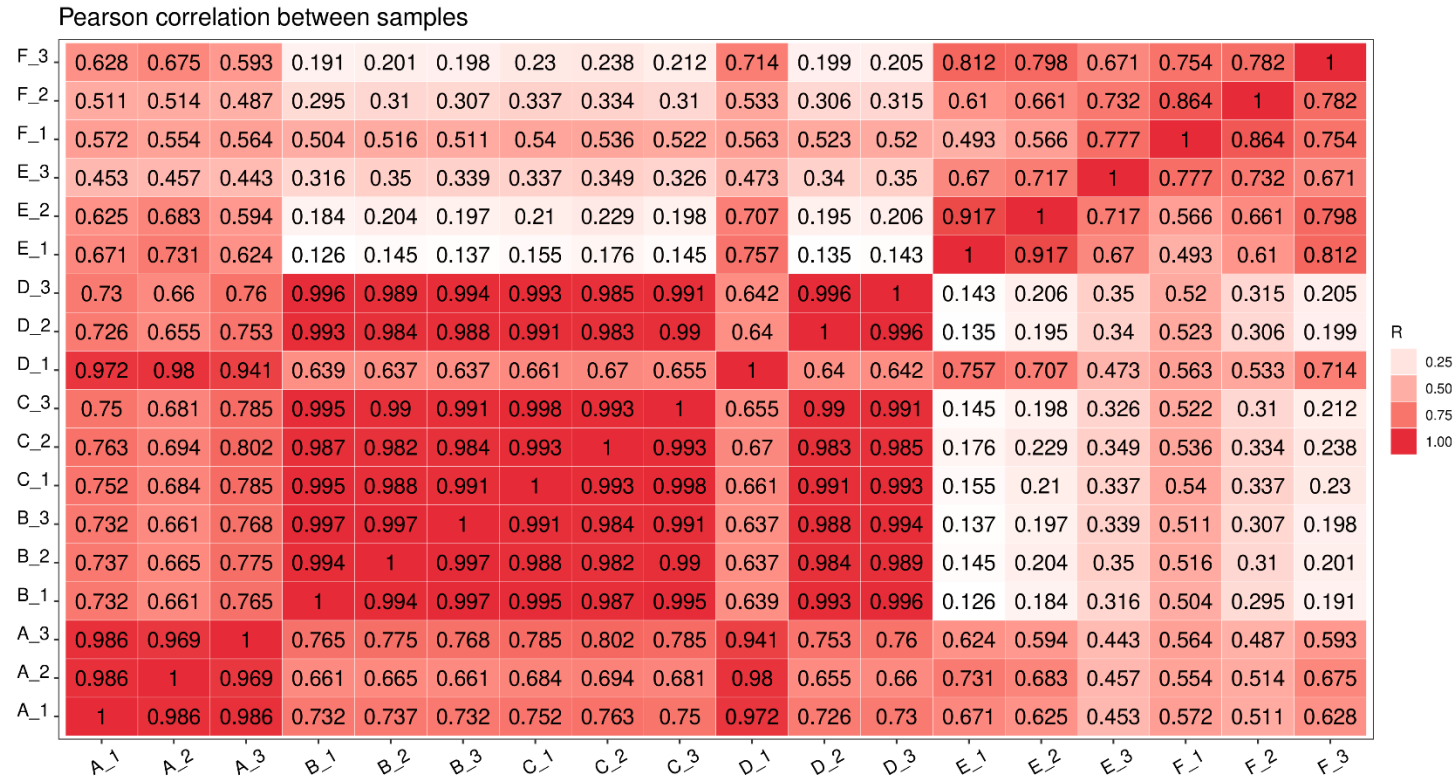
a.



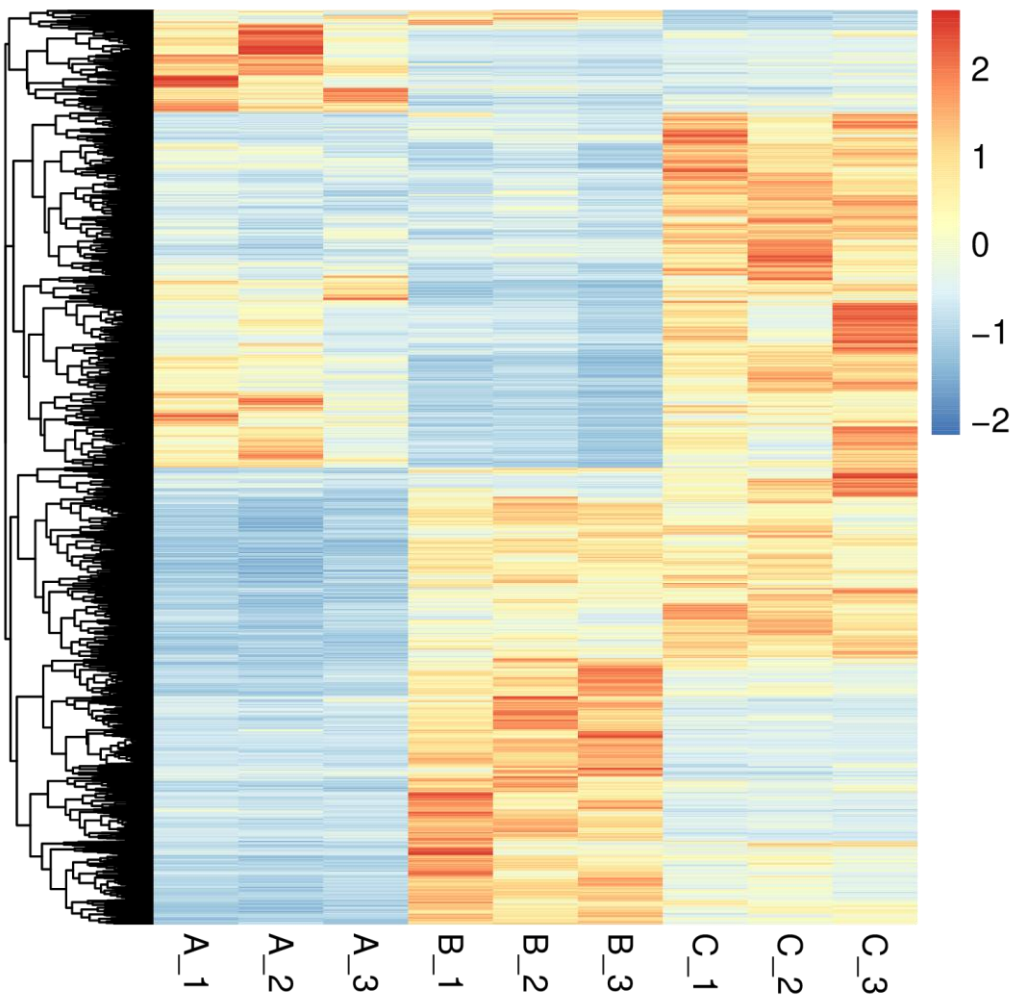
b.

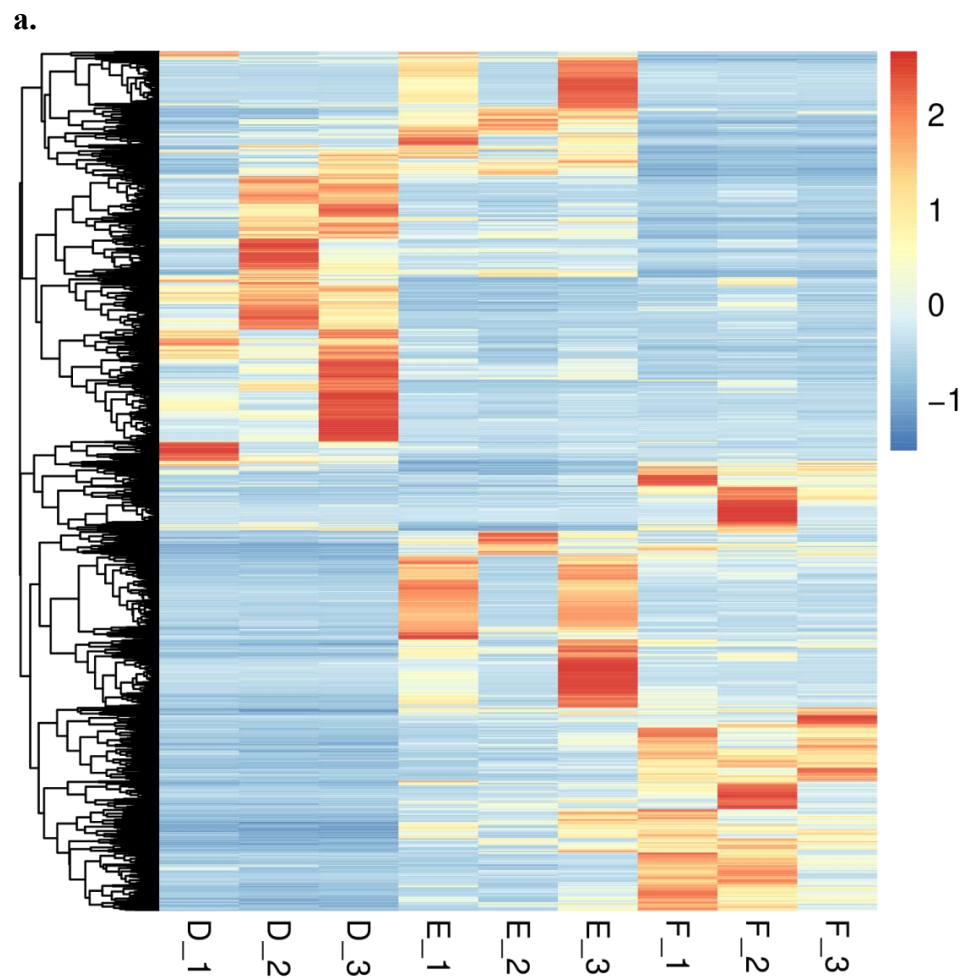


c.



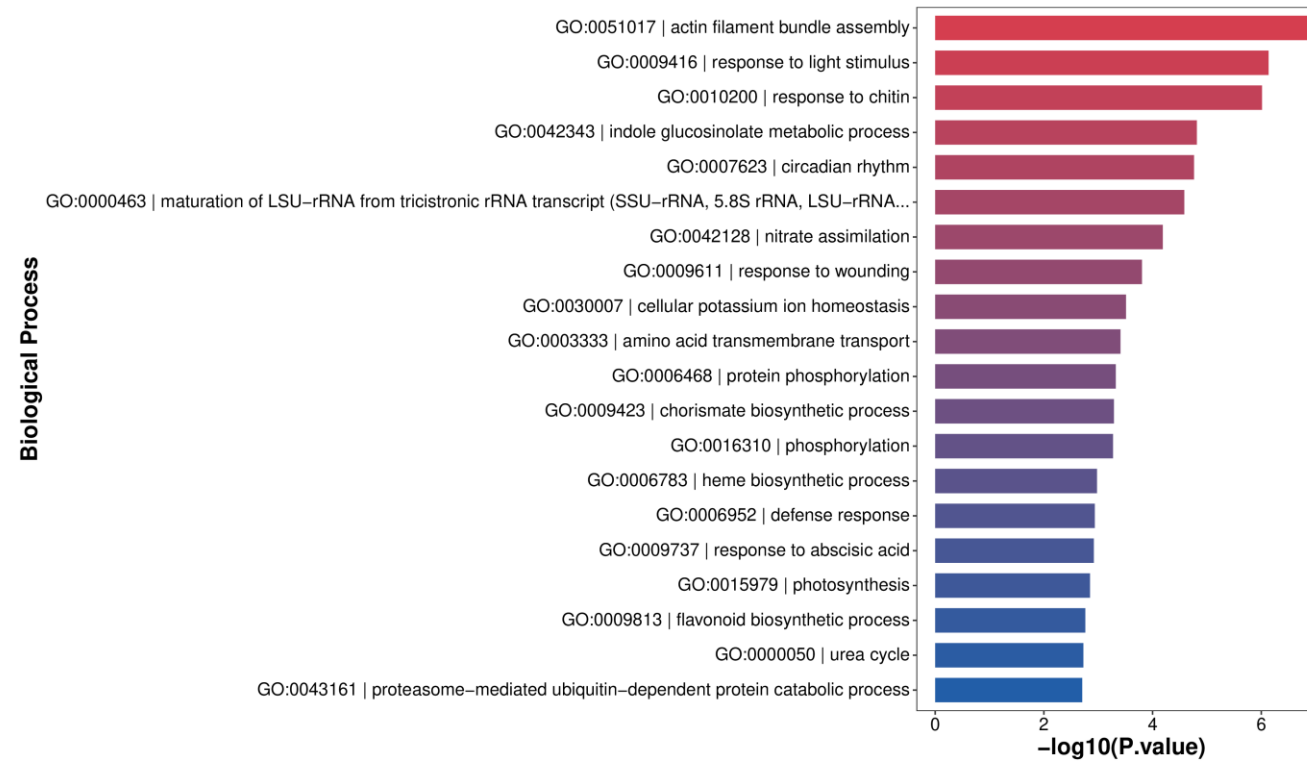
d. Supplemental Figure S2. Gene expression statistics of all 18 samples. a. The boxplot of gene expressions in 18 samples; b. The density of gene expressions in 18 samples; c. The violin plot of gene expressions in 18 samples; d. The pearson correlation analysis in 18 samples.



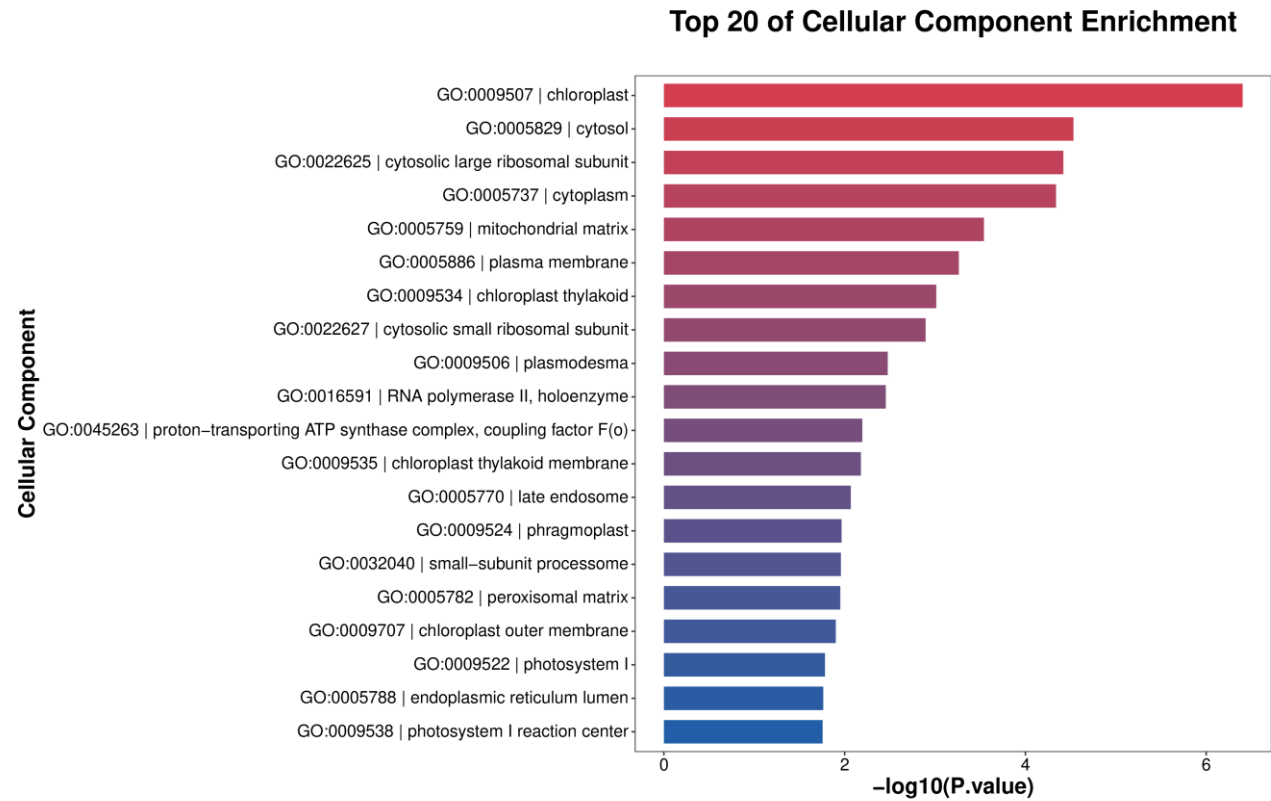


b.
Supplemental Figure S3. The gene expression heatmap of *Kingdonia uniflora* leaf tissue A vs. B vs. C (a) and flower bud tissue D vs. E vs. F (b).

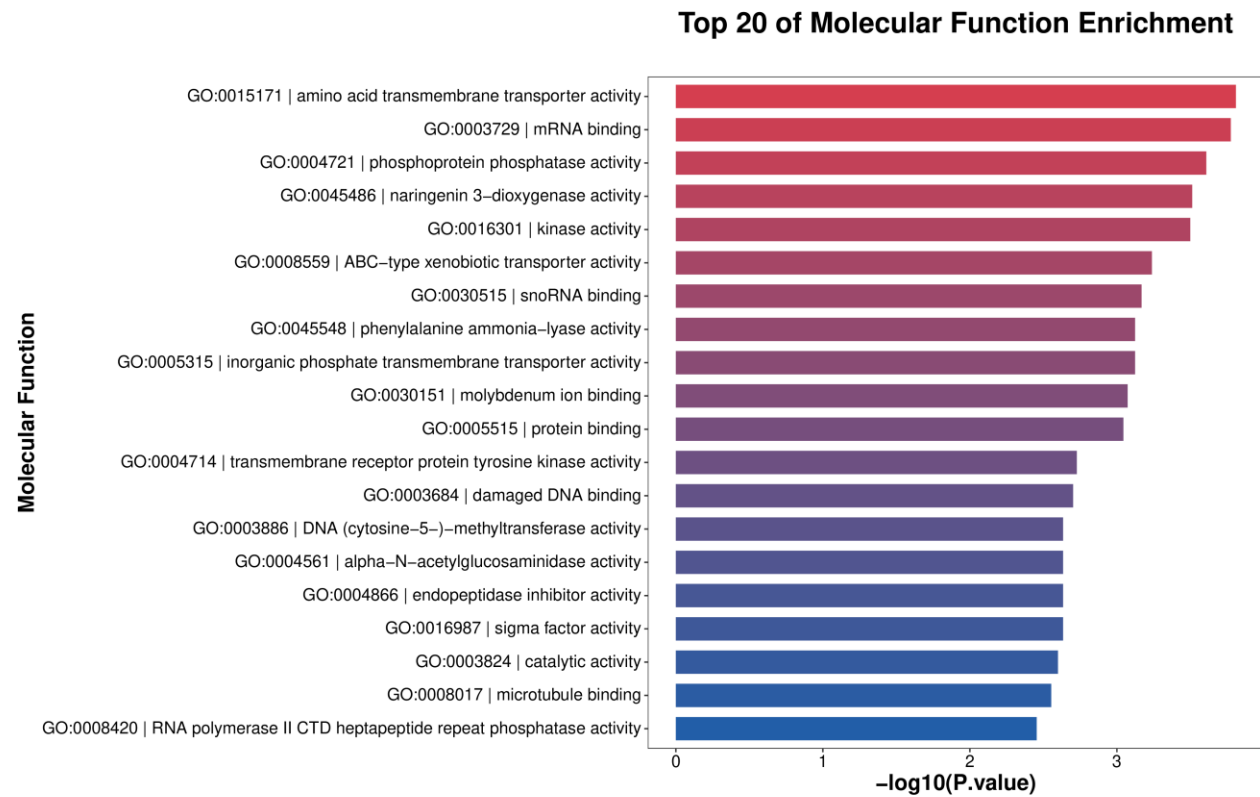
Top 20 of Biological Process Enrichment



a.

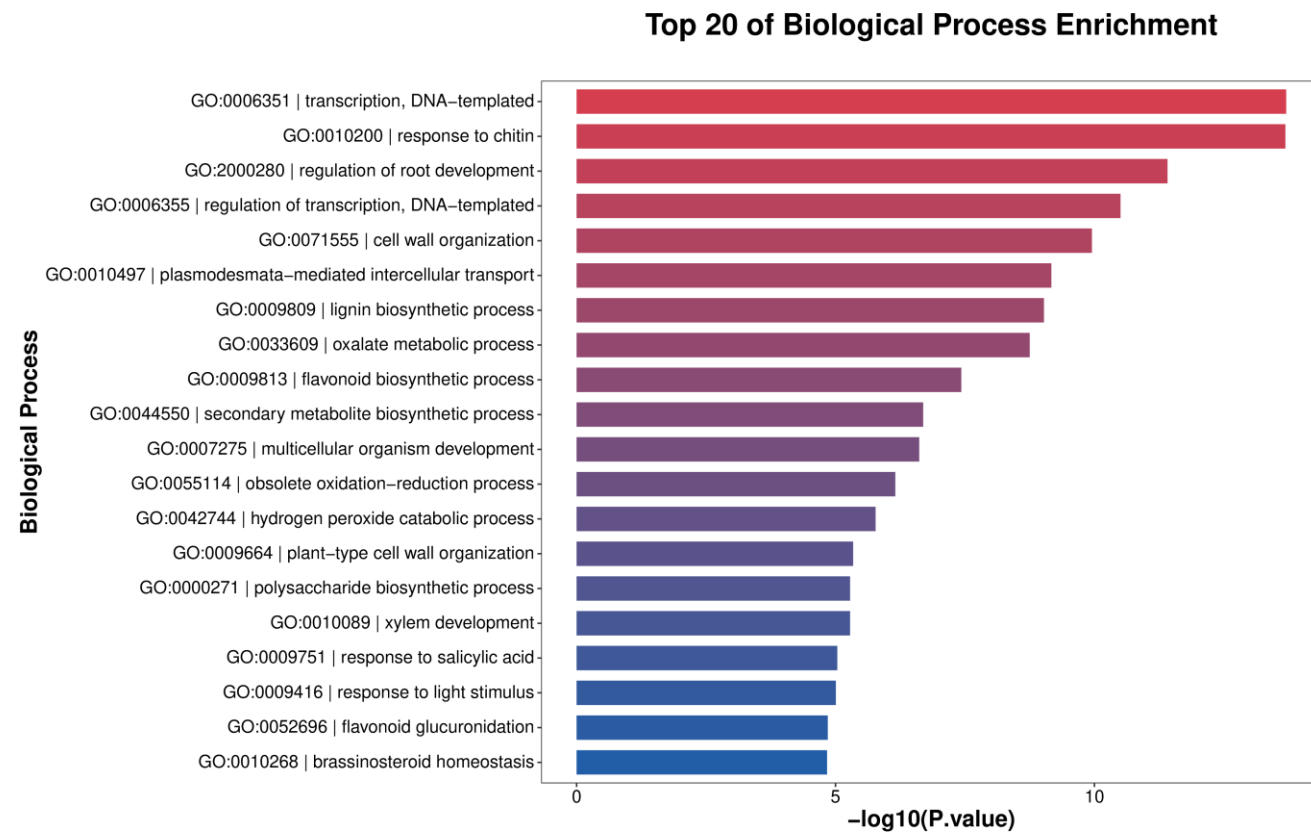


b.



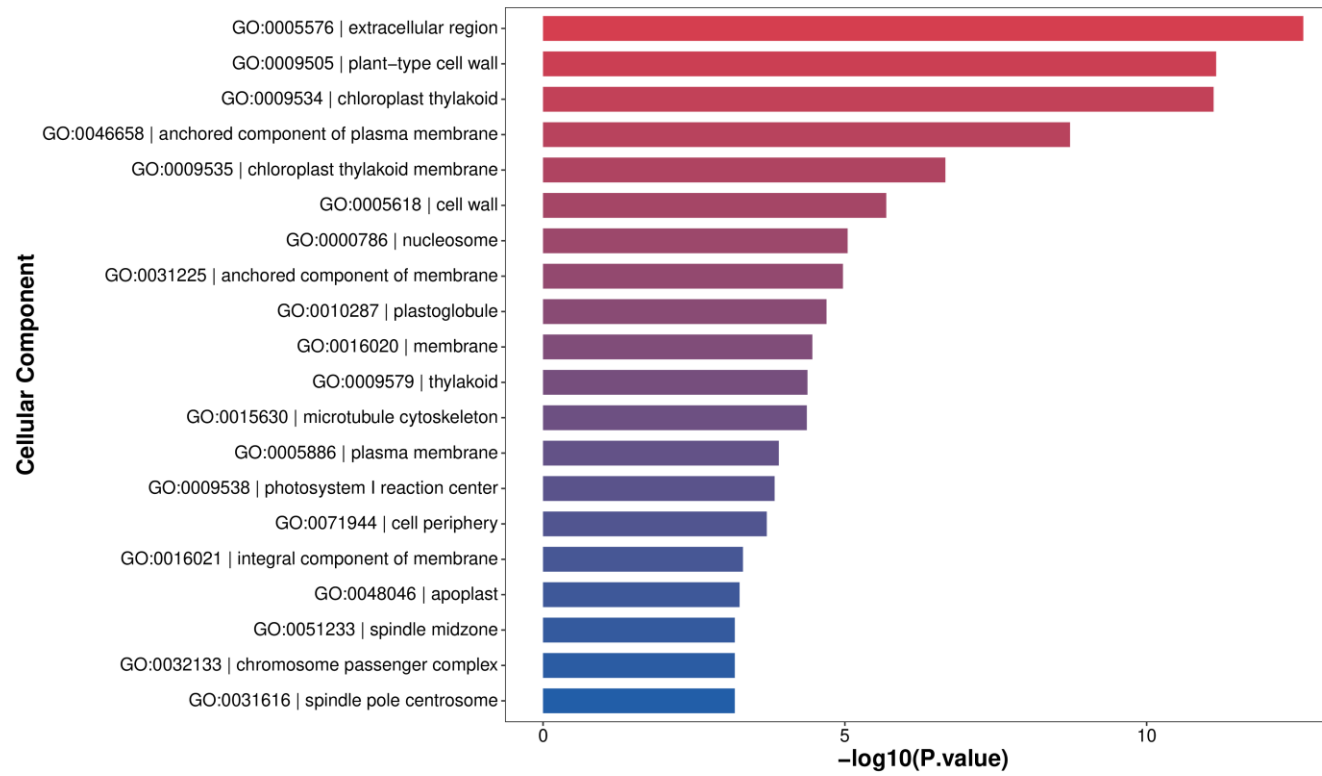
c.

Supplemental Figure S4. The GO enrichment results of DEGs in *Kingdonia uniflora* leaf tissue A vs. B vs. C. a. Biological Process ; b. Cellular Component; c. Molecular Function.

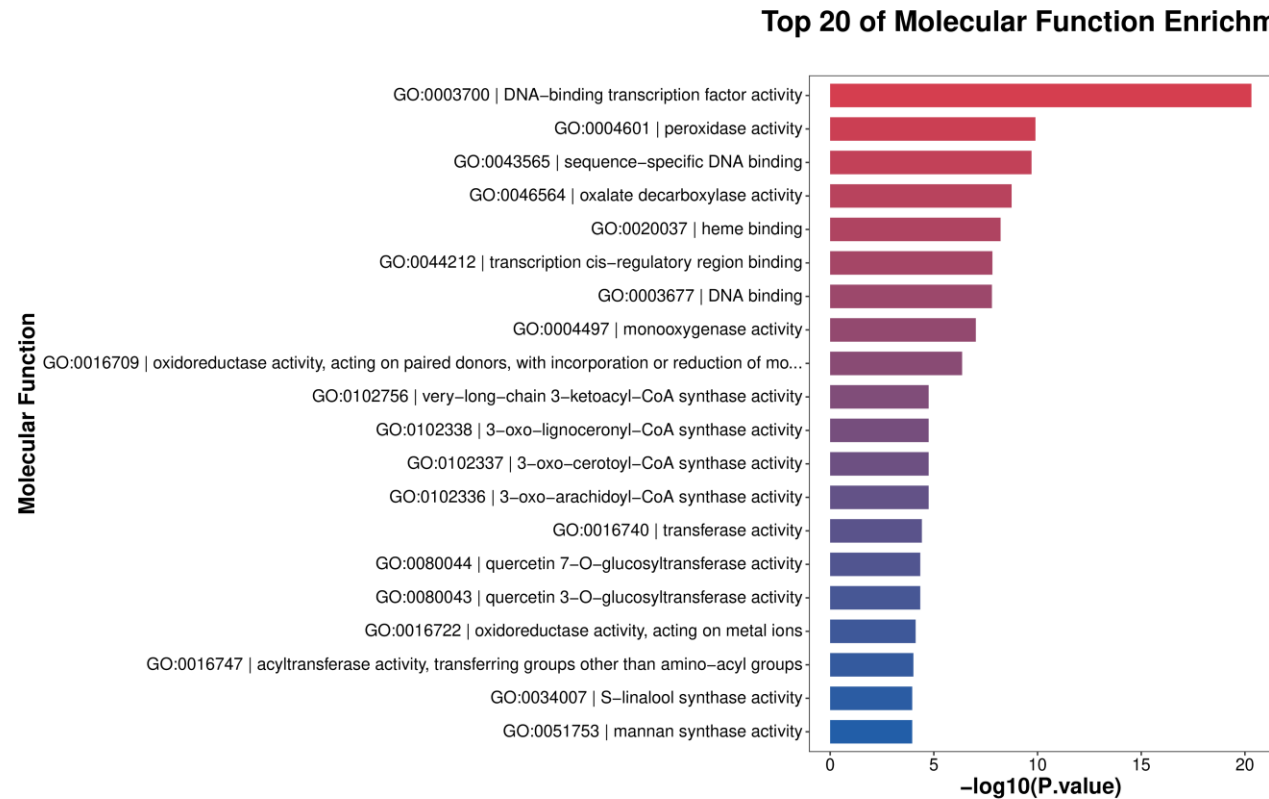


a.

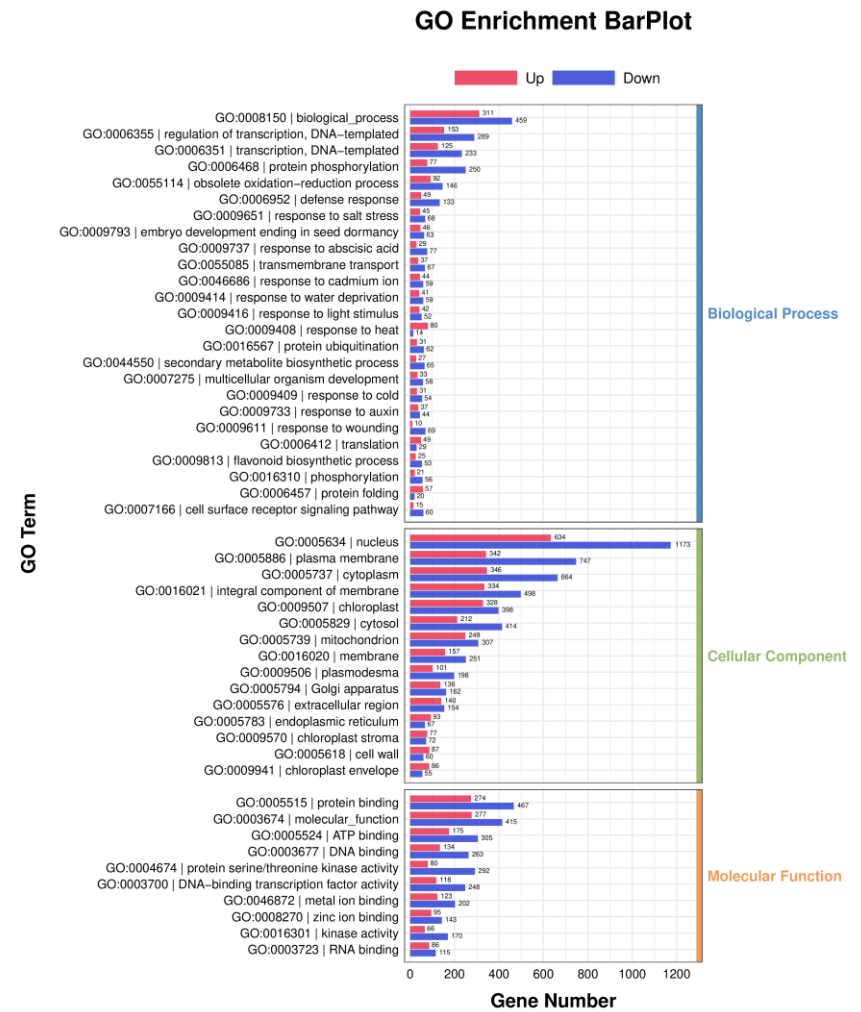
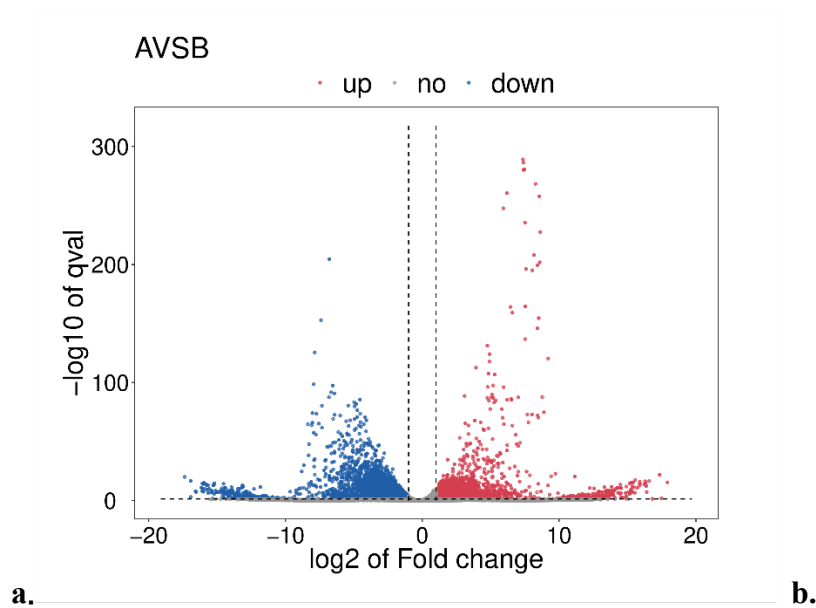
Top 20 of Cellular Component Enrichment

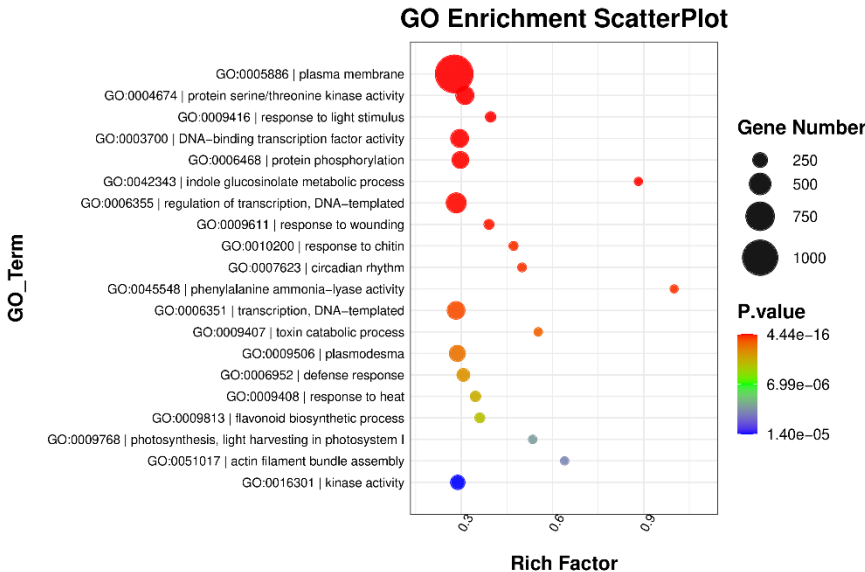


b.

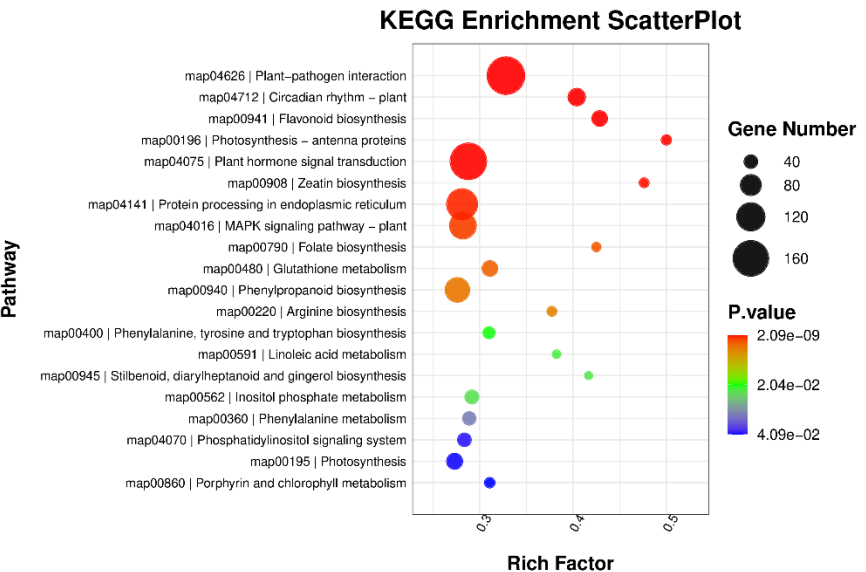


c.
 Supplemental Figure S5. The GO enrichment results of DEGs in *Kingdonia uniflora* flower bud tissue D vs. E vs. F. a. Biological Process ; b. Cellular Component; c. Molecular Function.

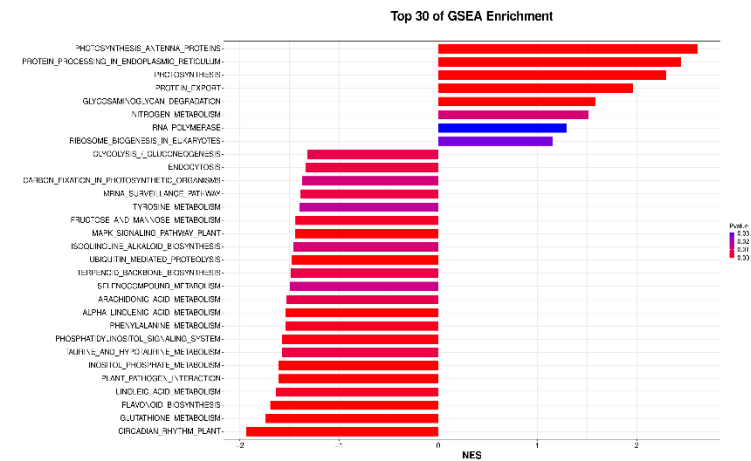
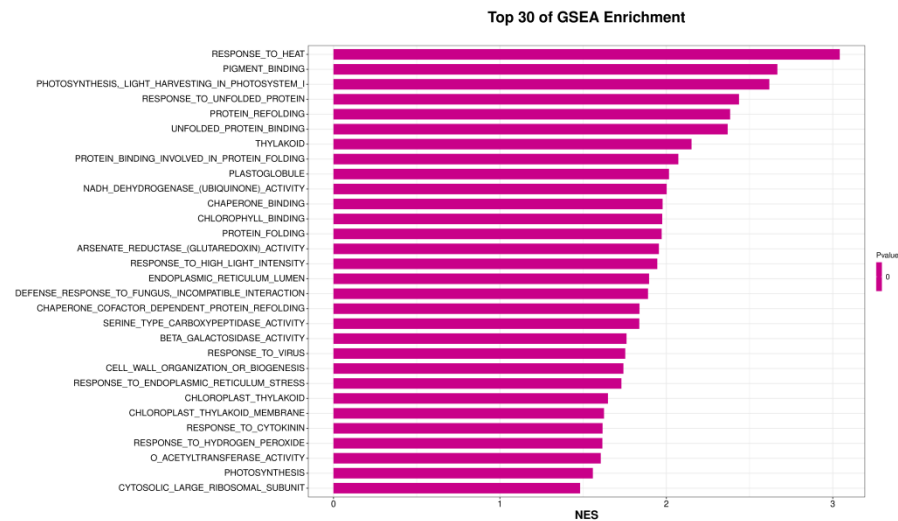




c.



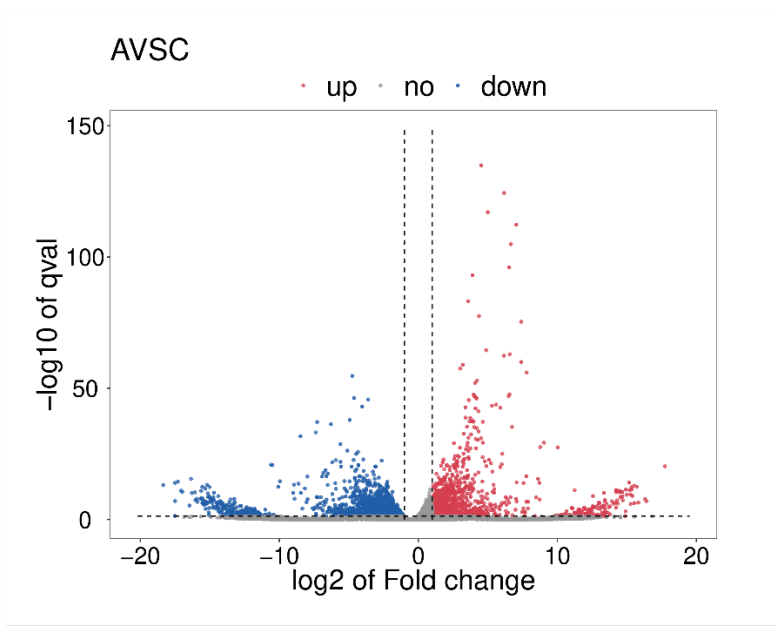
d.



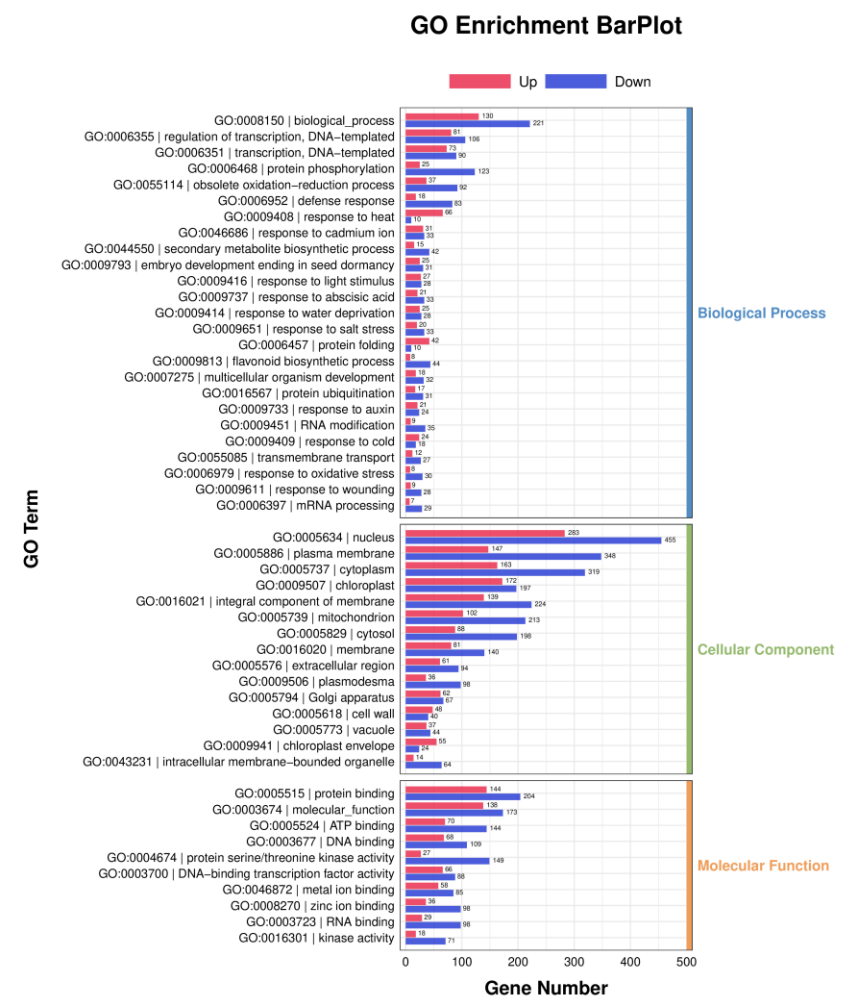
e.

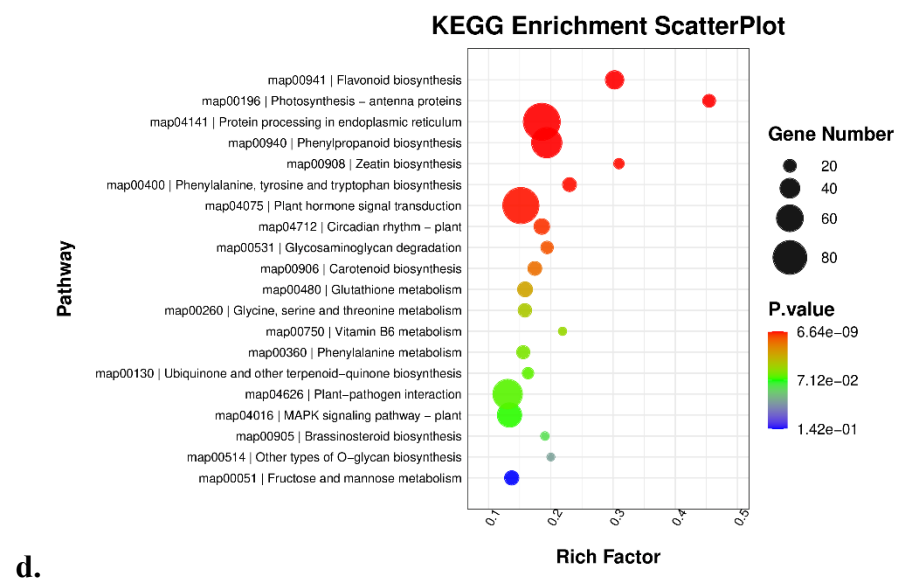
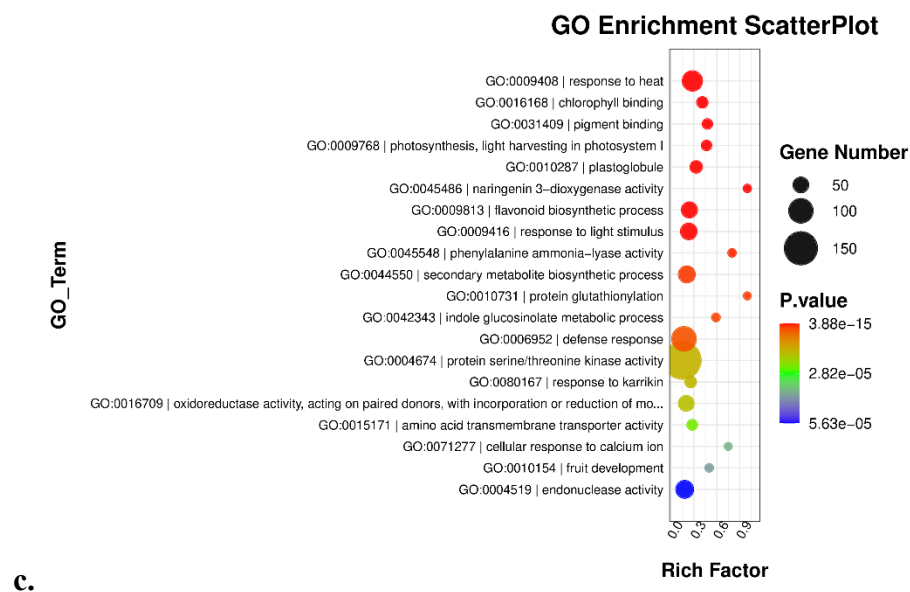
f.

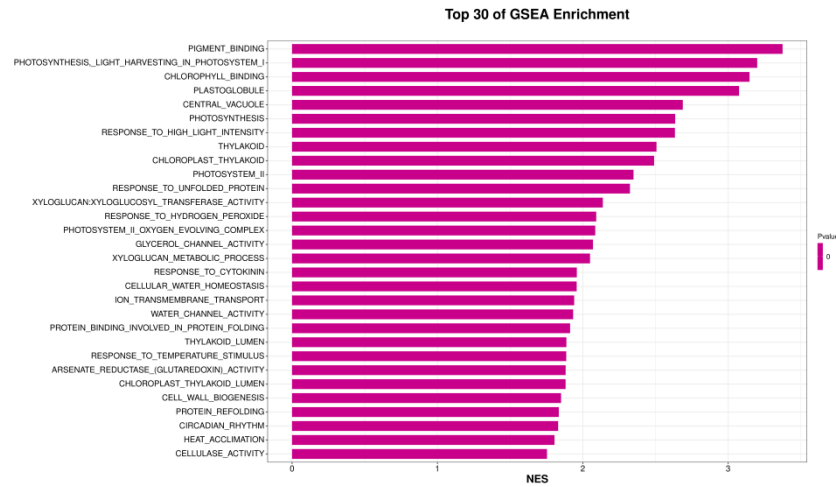
Supplemental Figure 6. The volcano plot of gene expression pattern (a), the GO enrichment bar plot (b), the GO enrichment scatter plot (c), the KEGG enrichment scatter plot (d), the GO Gsea enrichment analysis (e) and the KEGG Gsea enrichment analysis (f) of DEGs between leaf tissue A and B group.



b.

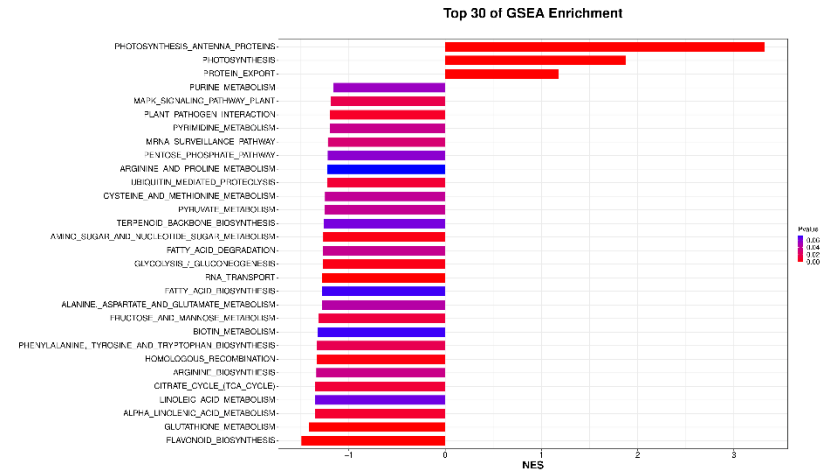




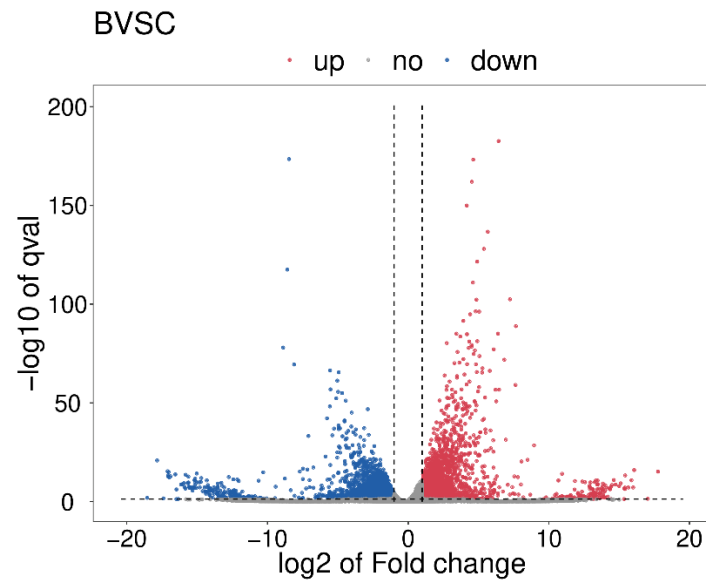


e.

f.

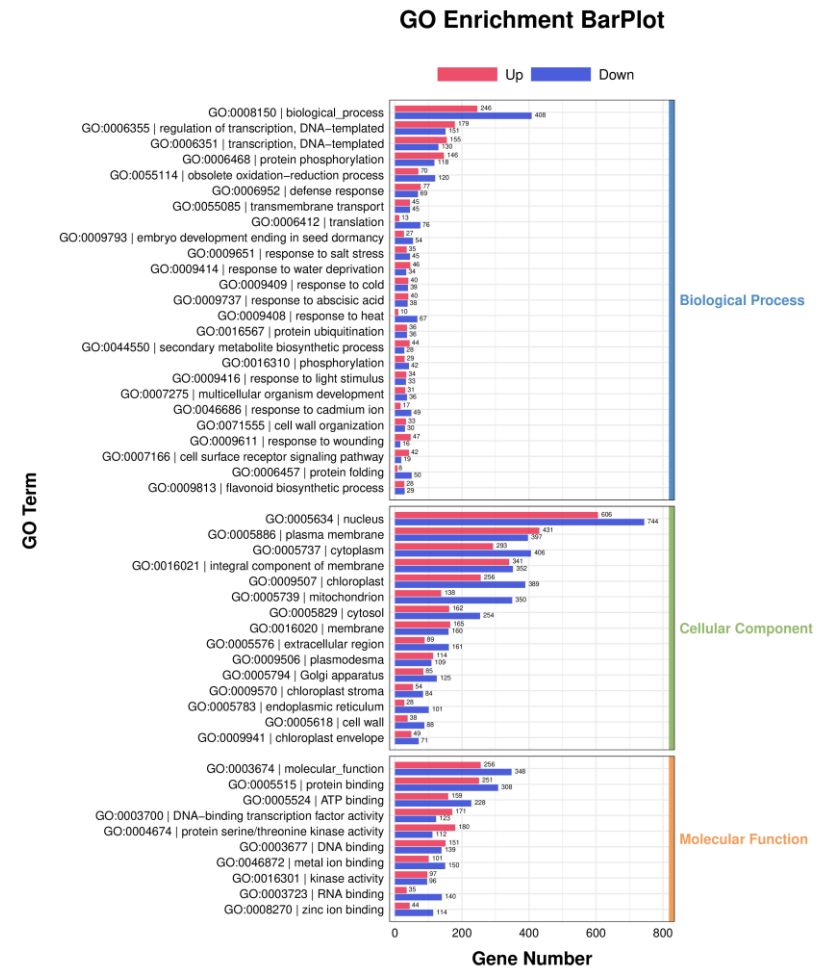


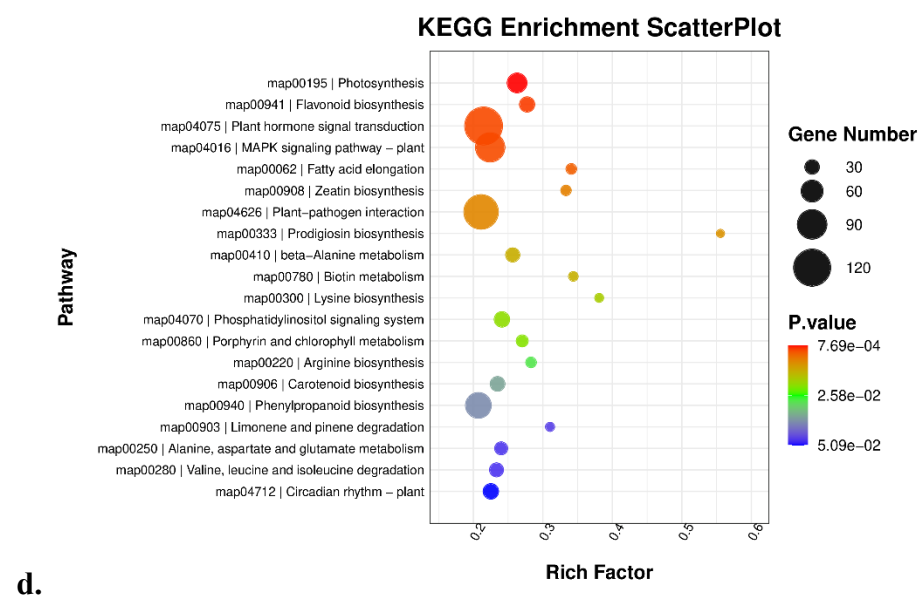
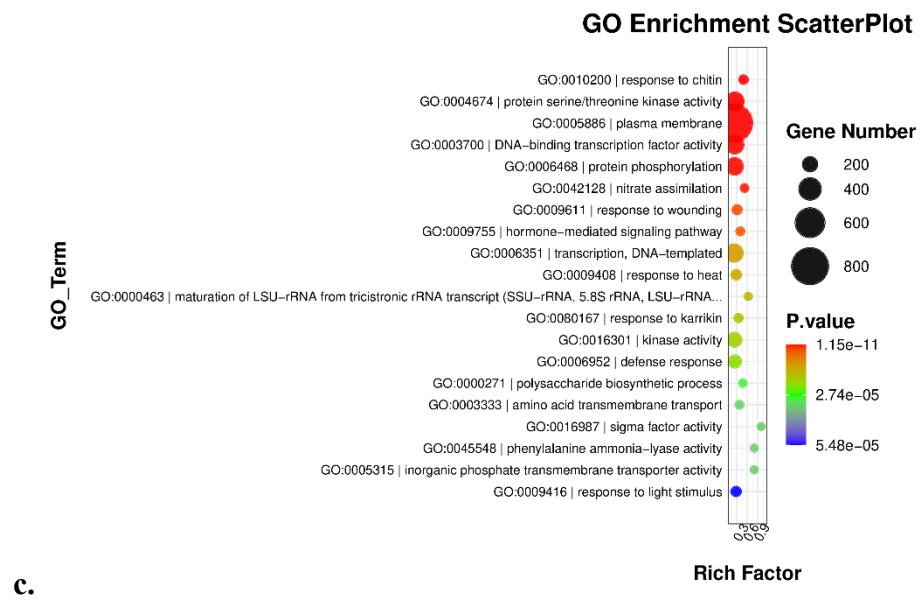
Supplemental Figure S7. The volcano plot of gene expression pattern (a), the GO enrichment bar plot (b), the GO enrichment scatter plot (c), the KEGG enrichment scatter plot (d), the GO Gsea enrichment analysis (e) and the KEGG Gsea enrichment analysis (f) of DEGs between leaf tissue A and C group.

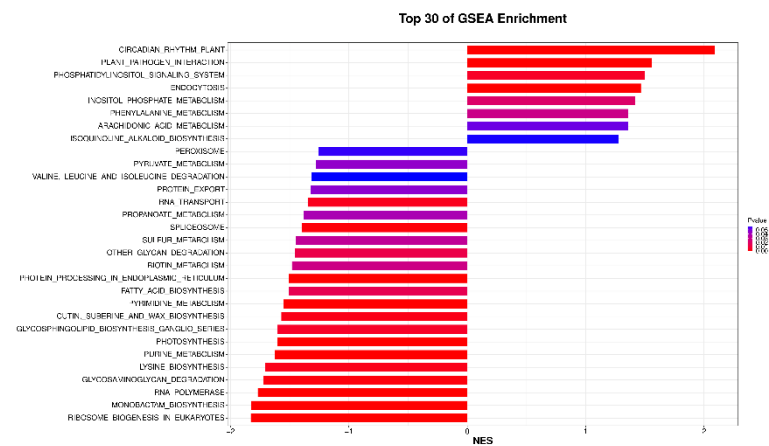
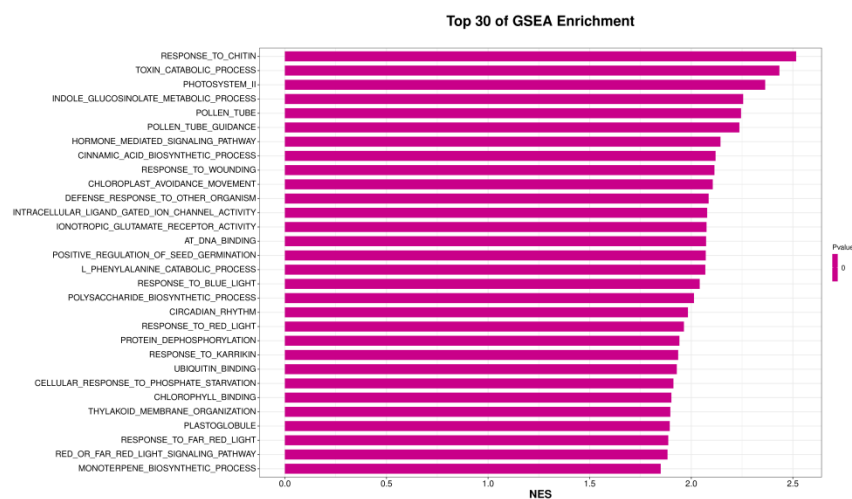


a.

b.

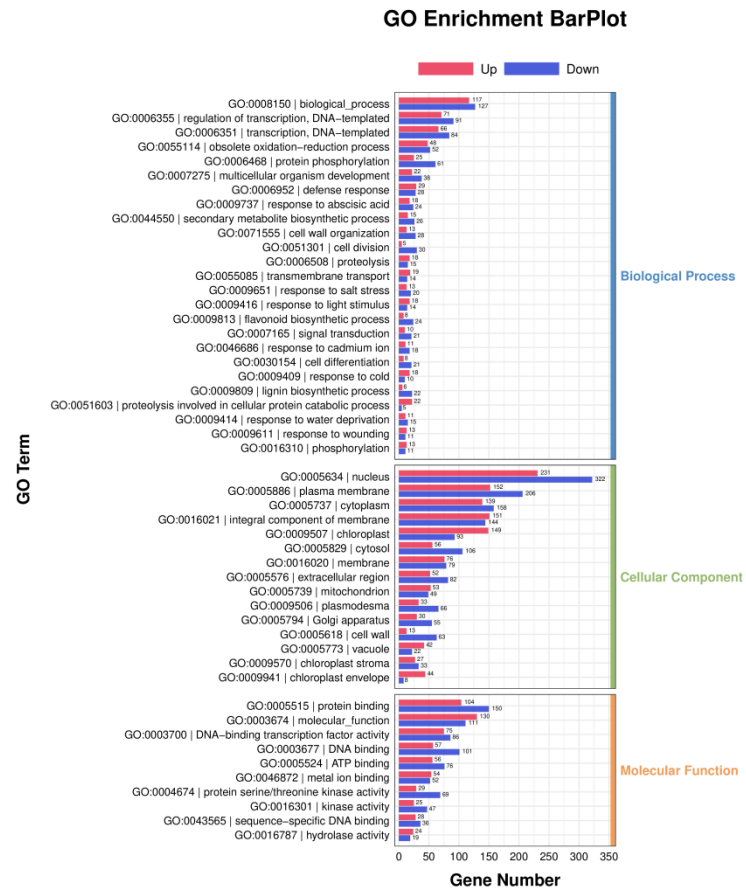
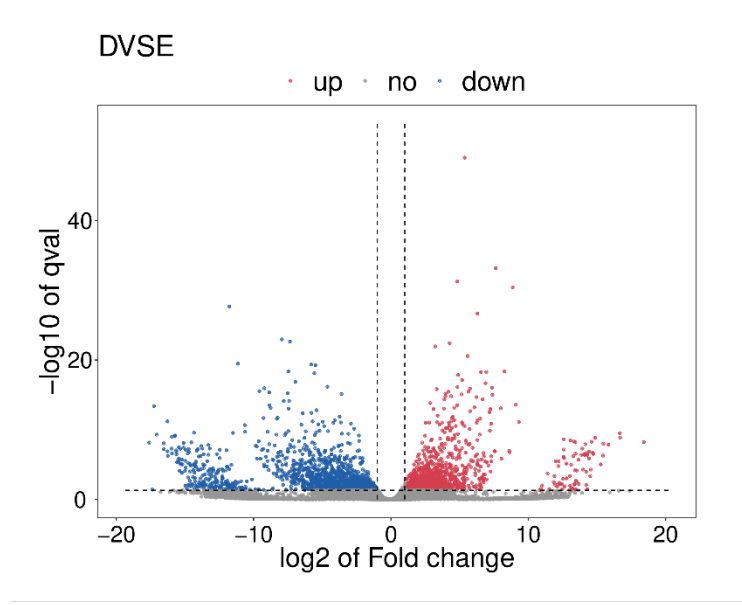


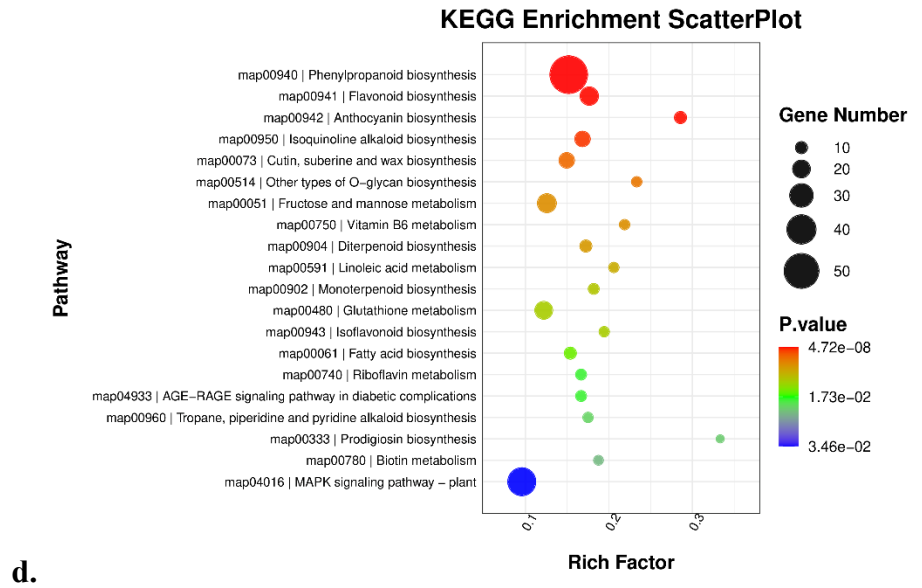
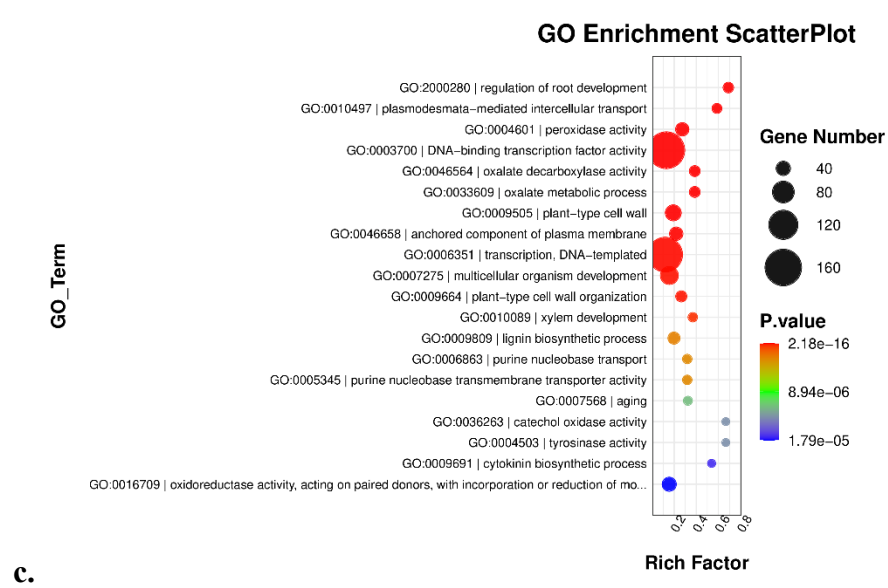


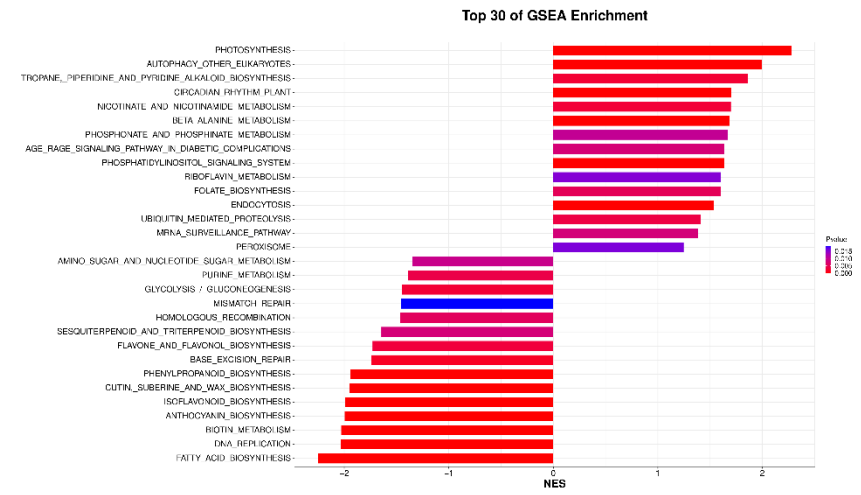
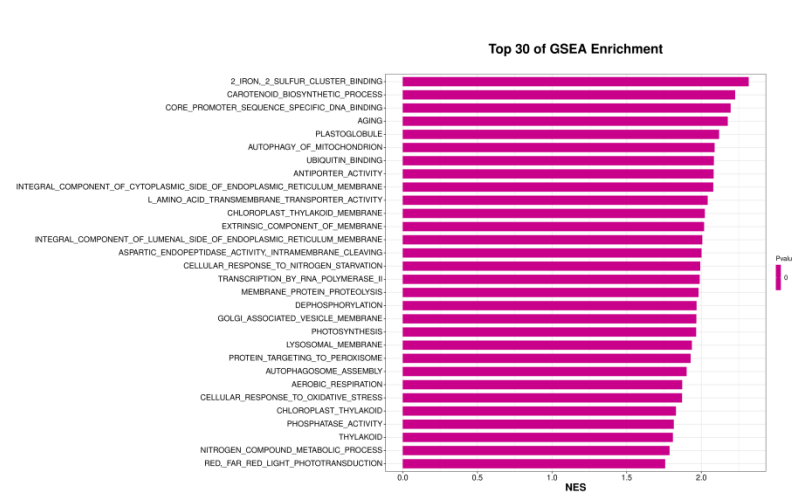


e.

Supplemental Figure S8. The volcano plot of gene expression pattern (a), the GO enrichment bar plot (b), the GO enrichment scatter plot (c), the KEGG enrichment scatter plot (d), the GO Gsea enrichment analysis (e) and the KEGG Gsea enrichment analysis (f) of DEGs between leaf tissue B and C group.



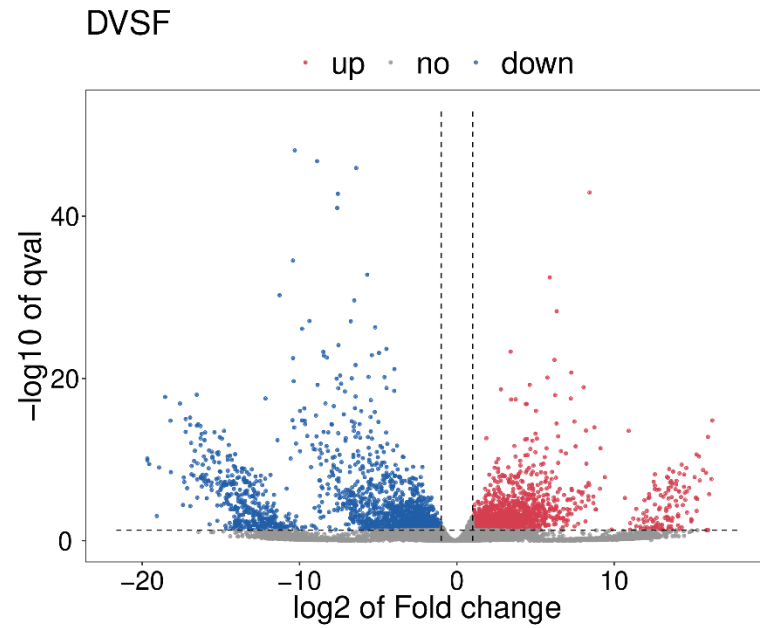




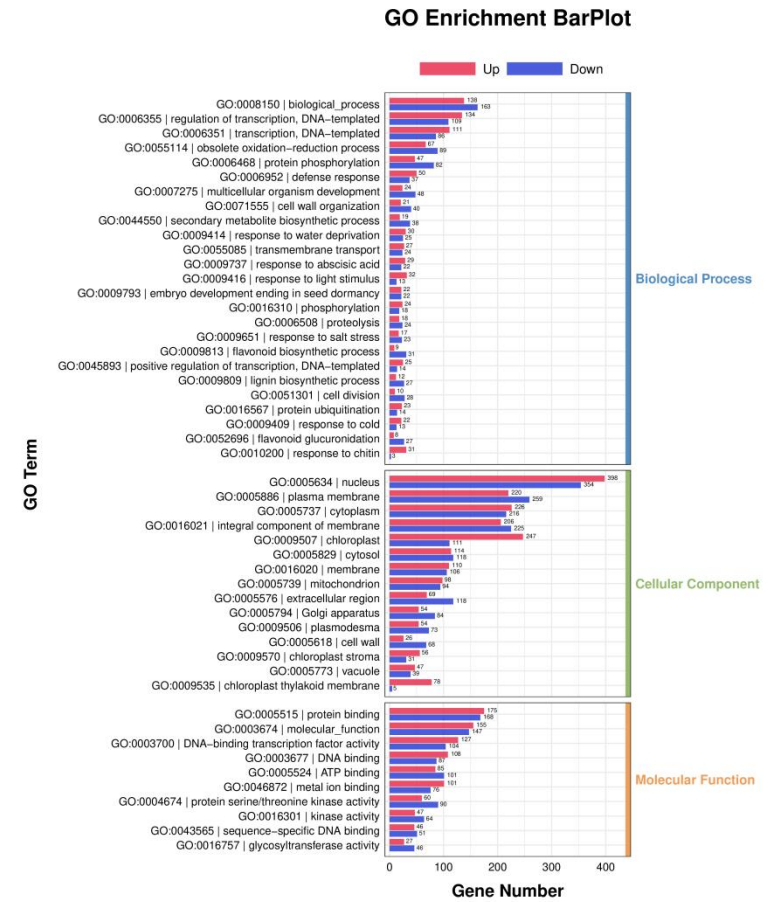
e.

f.

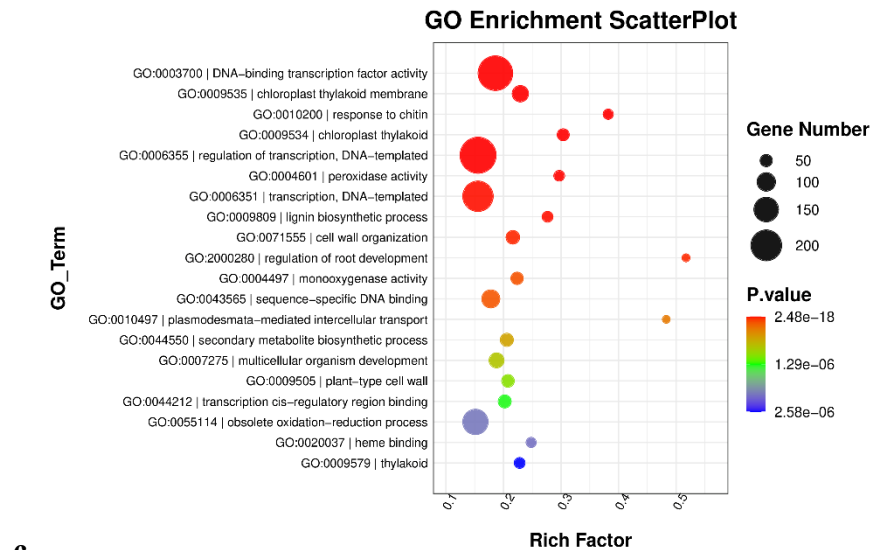
Supplemental Figure S9. The volcano plot of gene expression pattern (a), the GO enrichment bar plot (b), the GO enrichment scatter plot (c), the KEGG enrichment scatter plot (d), the GO Gsea enrichment analysis (e) and the KEGG Gsea enrichment analysis (f) of DEGs between flower bud tissue D and E group.



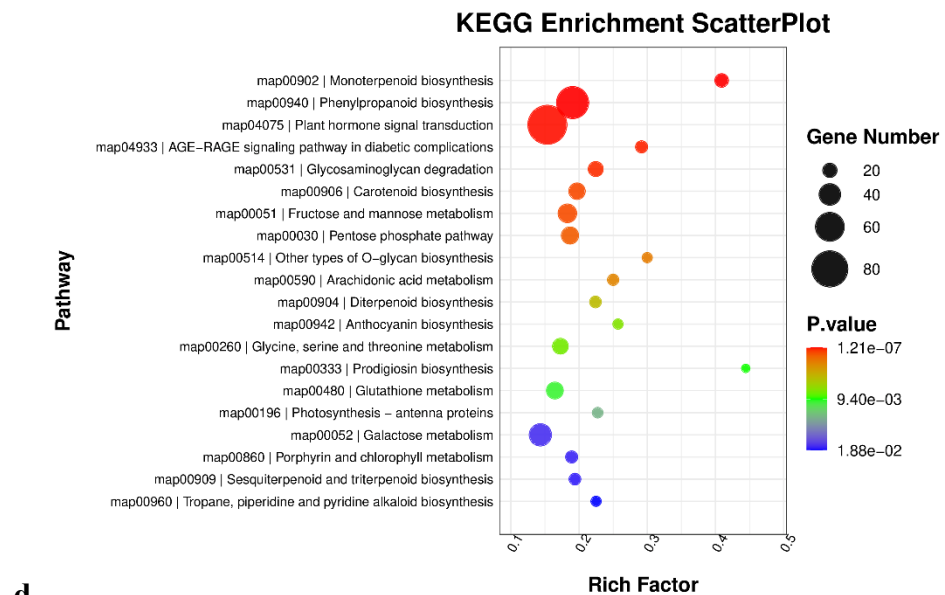
a.



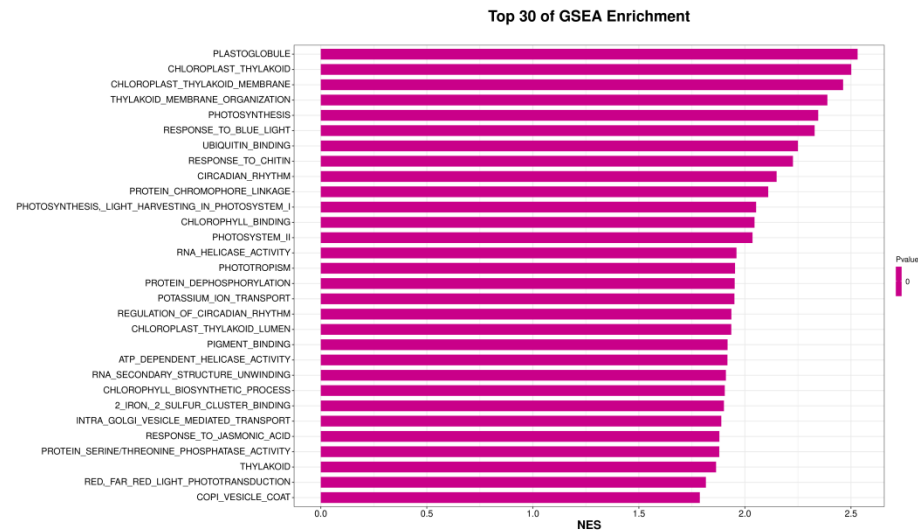
b.



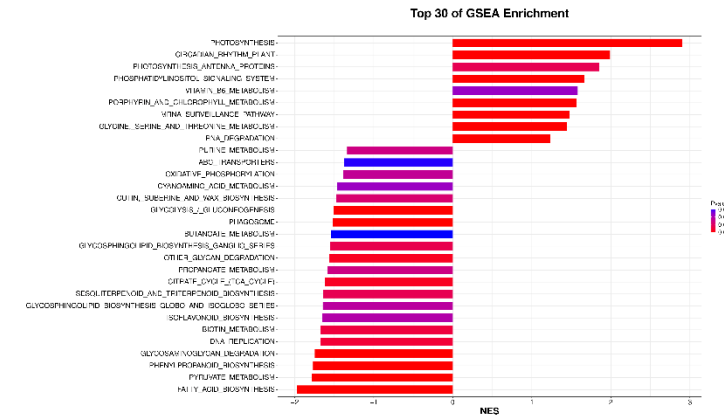
c.



d.

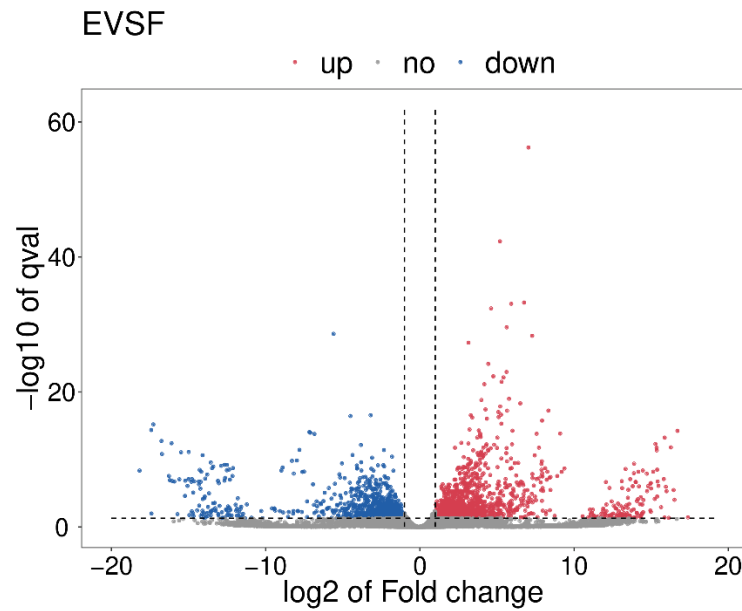


f.

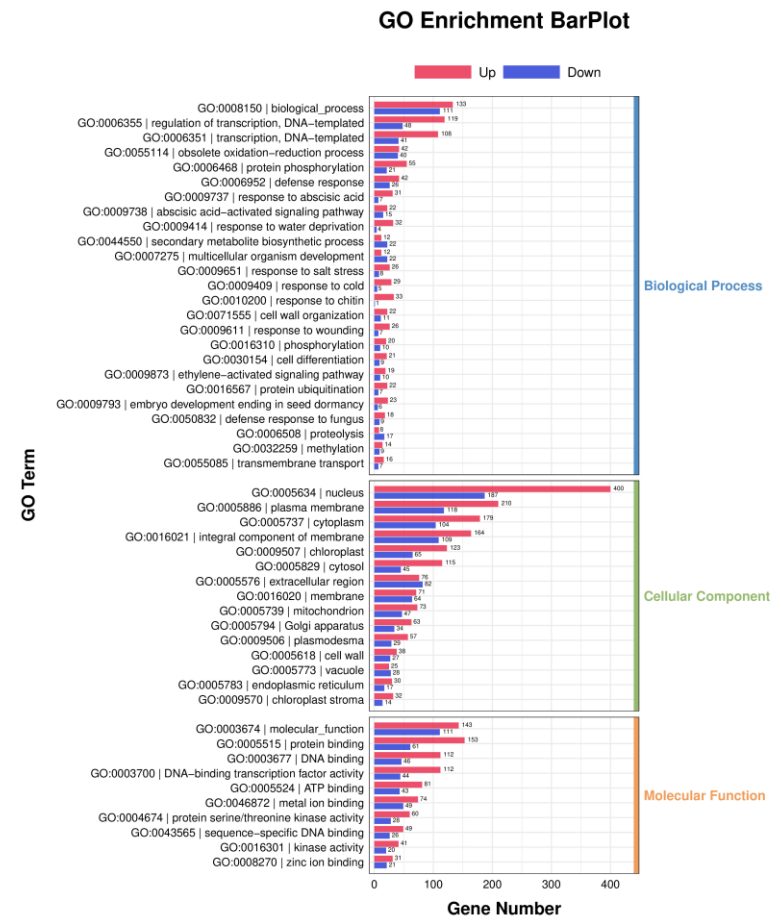


e.

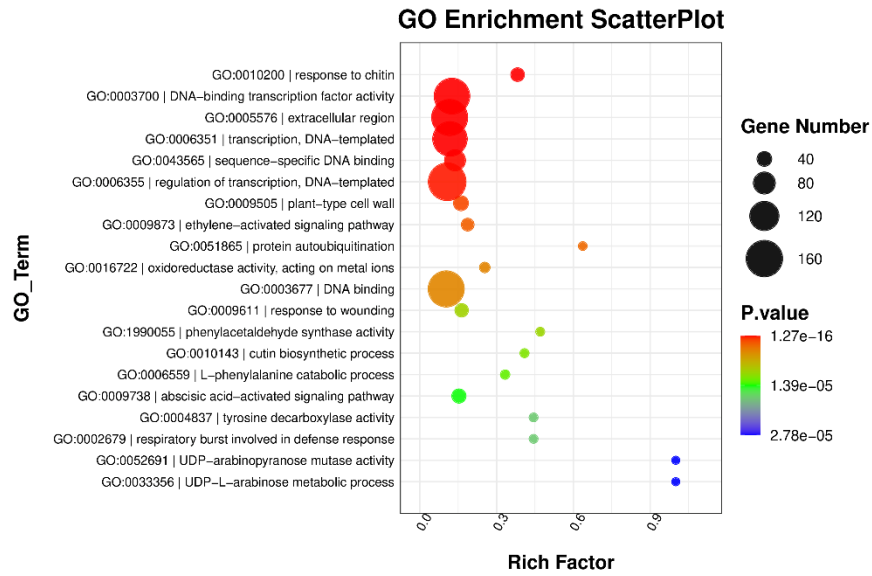
Supplemental Figure S10. The volcano plot of gene expression pattern (a), the GO enrichment bar plot (b), the GO enrichment scatter plot (c), the KEGG enrichment scatter plot (d), the GO Gsea enrichment analysis (e) and the KEGG Gsea enrichment analysis (f) of DEGs between flower bud tissue D and F group.



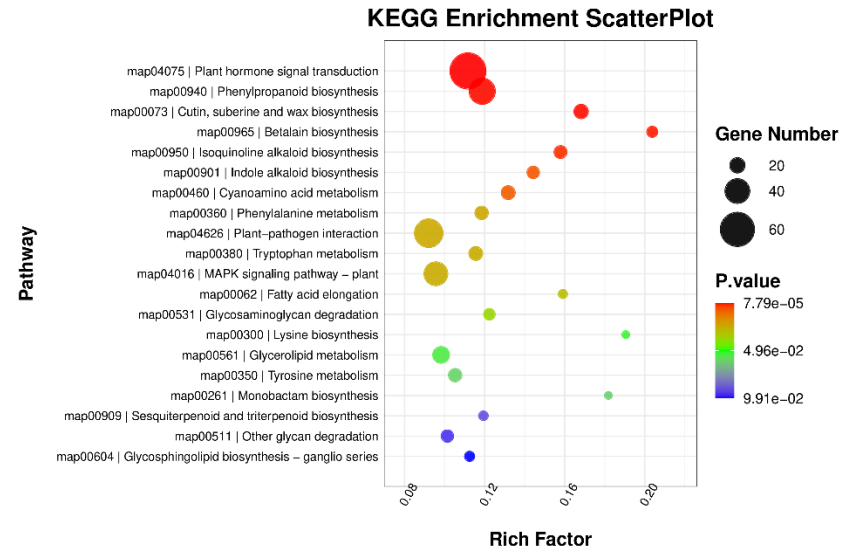
a.



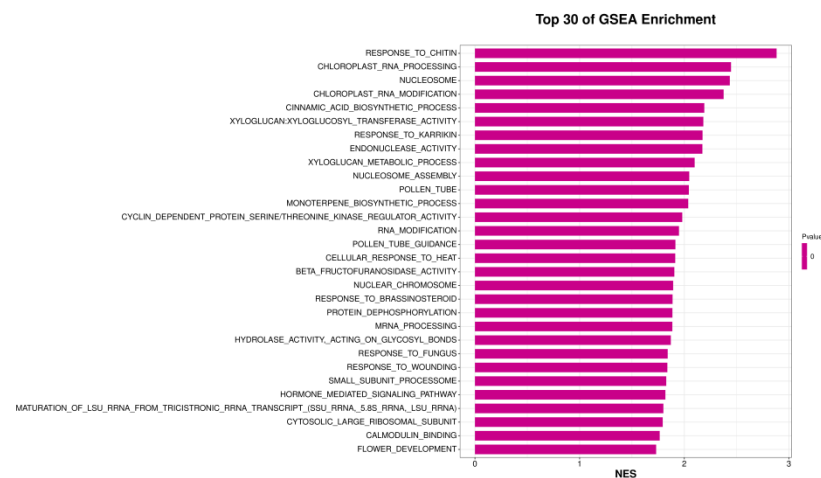
b.



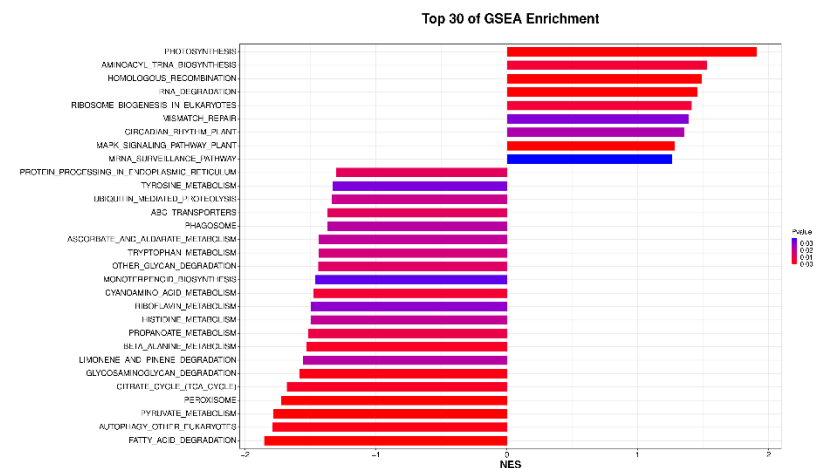
b.



d.

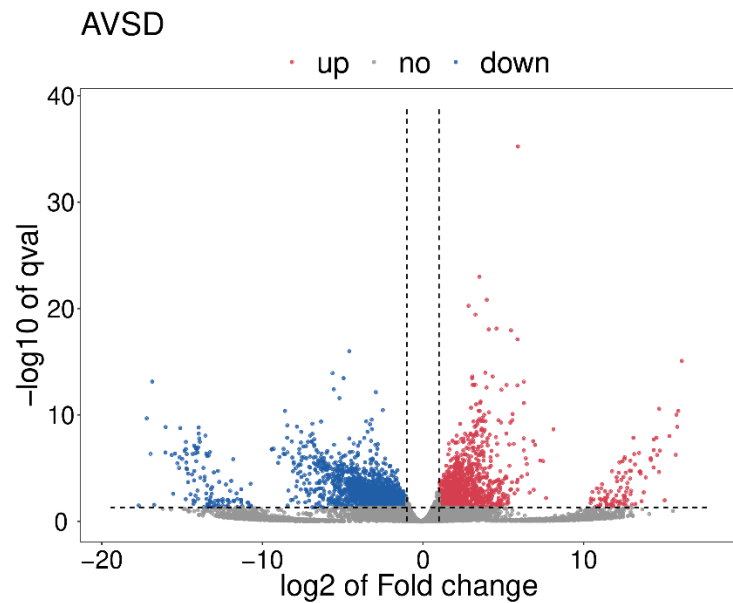


e.



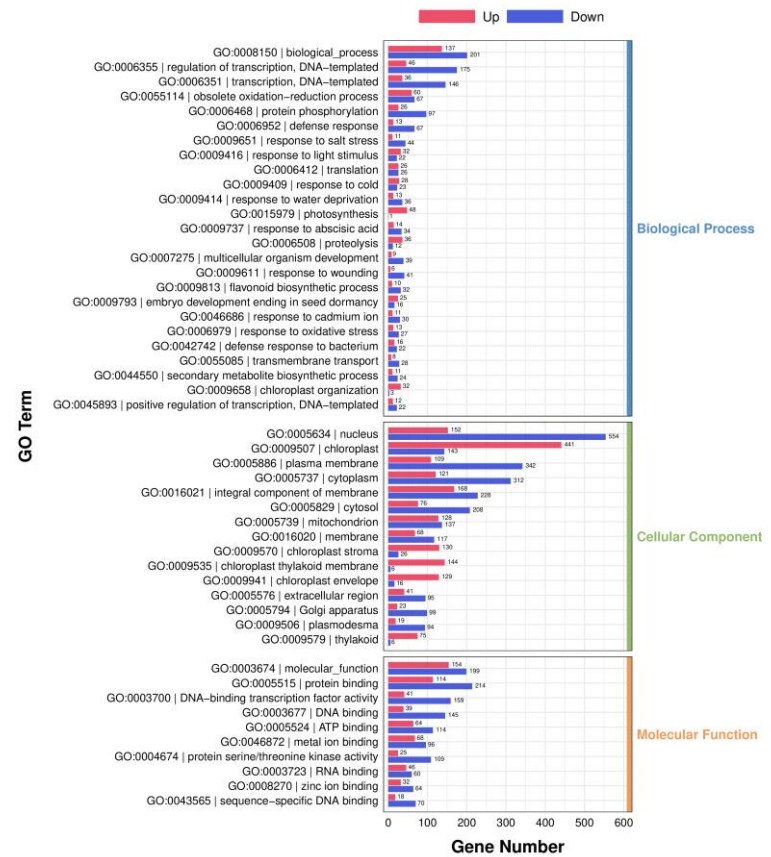
f.

Supplemental Figure S11. The volcano plot of gene expression pattern (a), the GO enrichment bar plot (b), the GO enrichment scatter plot (c), the KEGG enrichment scatter plot (d), the GO Gsea enrichment analysis (e) and the KEGG Gsea enrichment analysis (f) of DEGs between flower bud tissue E and F group.

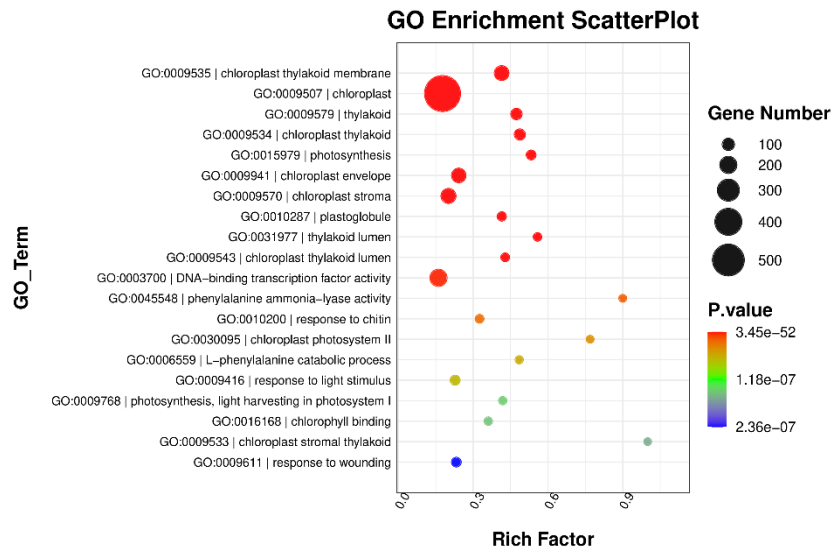


a.

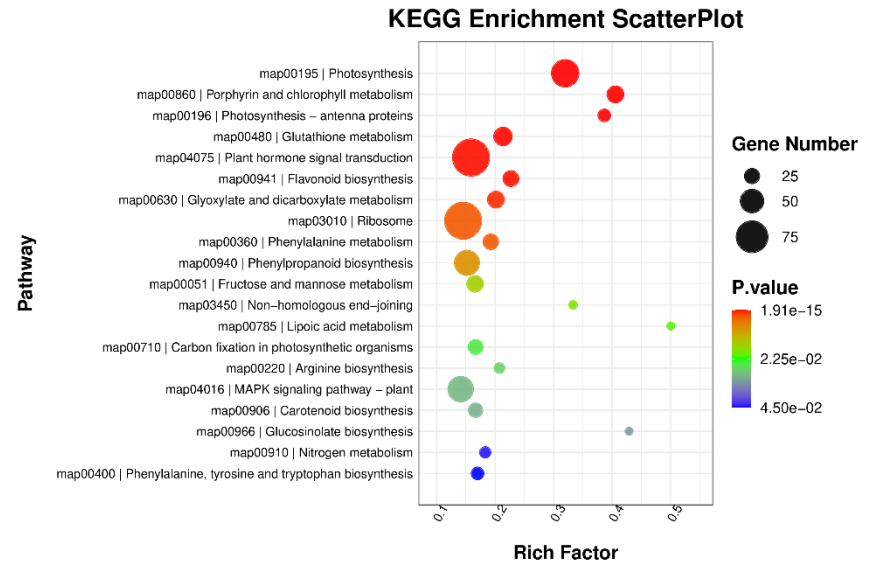
GO Enrichment BarPlot



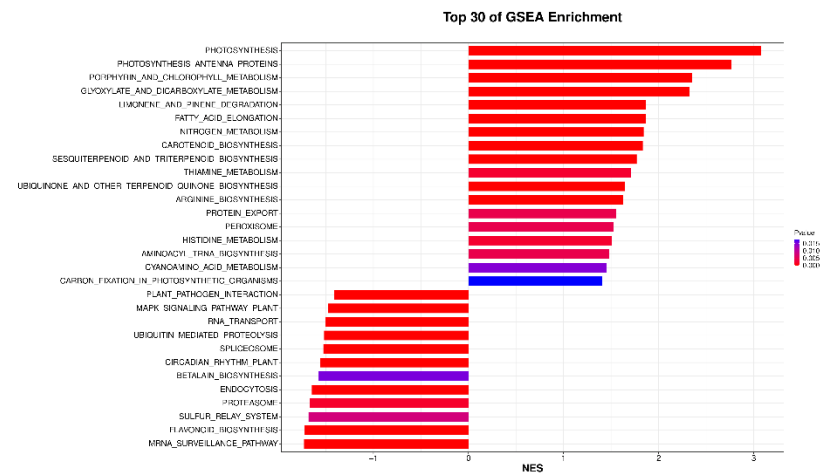
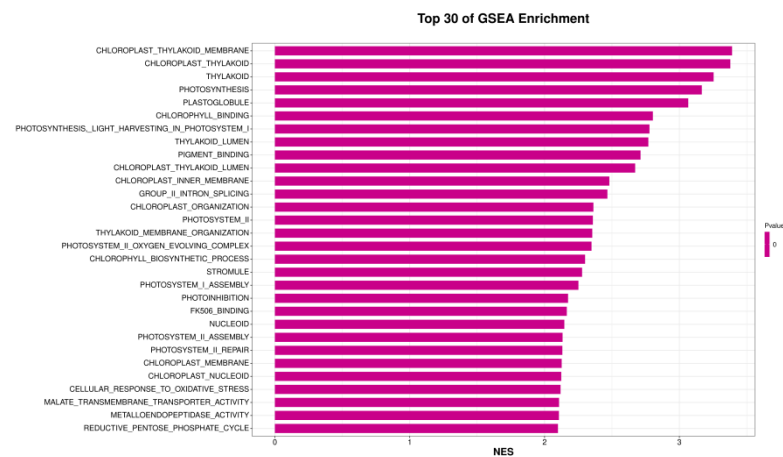
b.



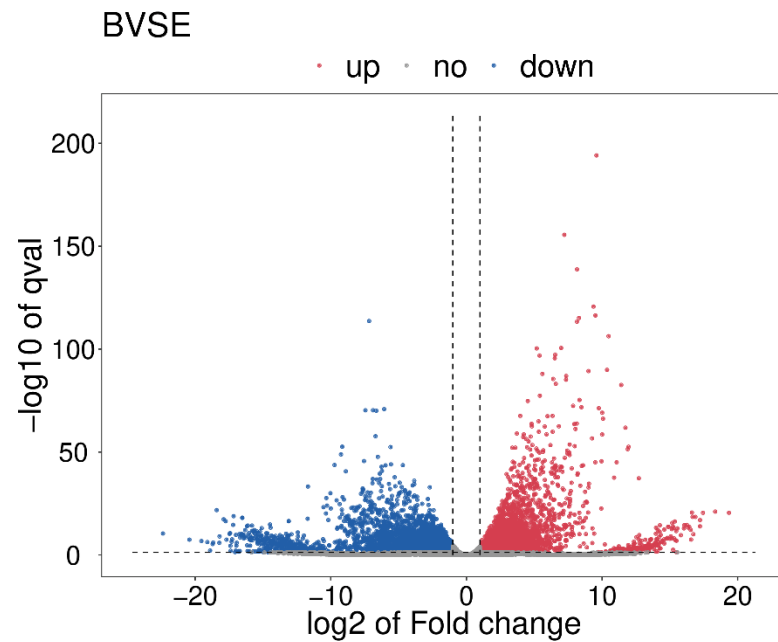
c.



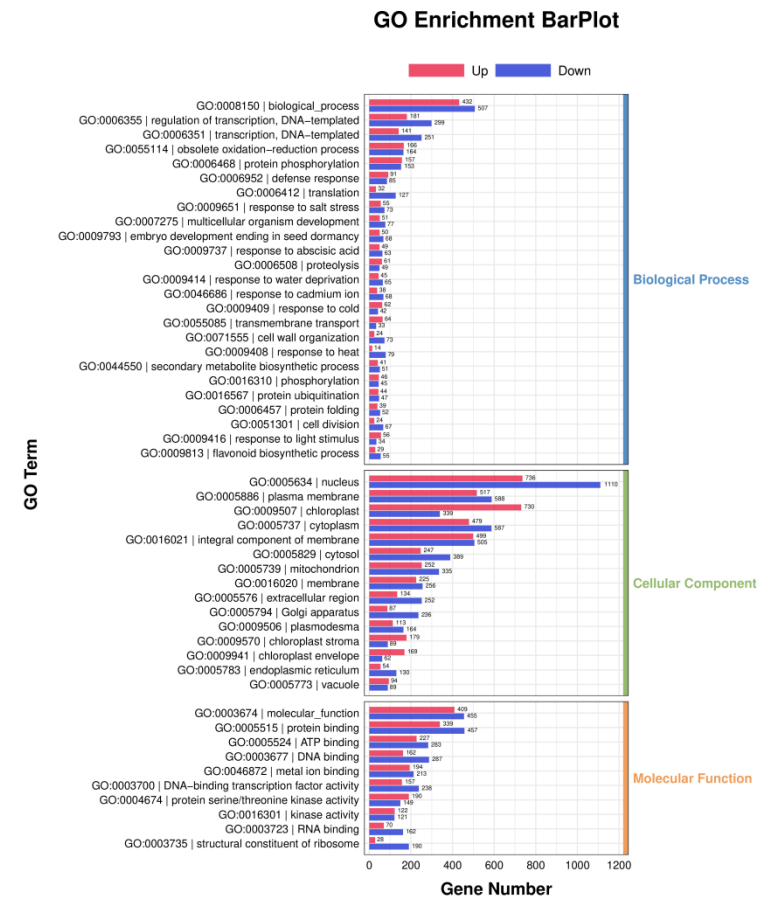
d.



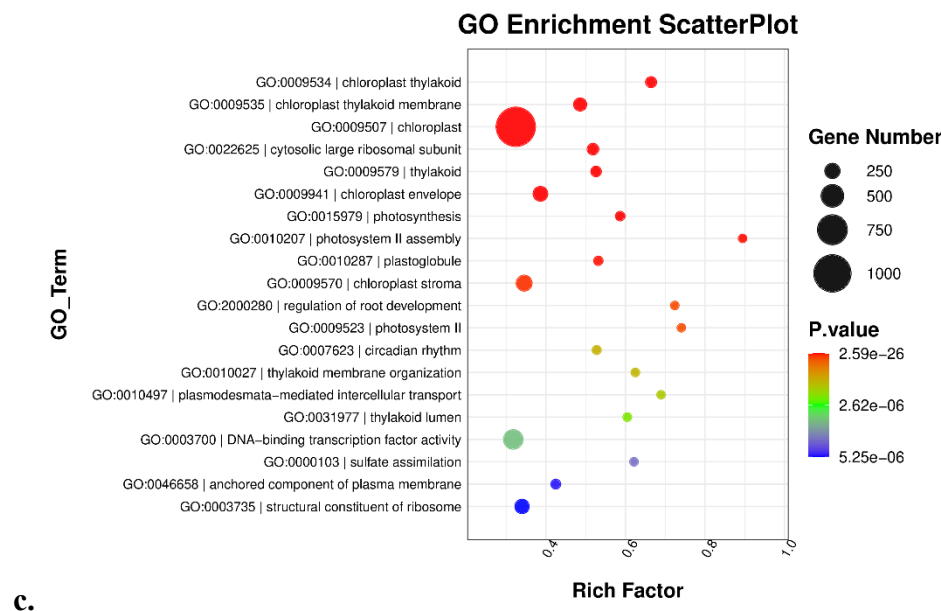
e. Supplemental Figure S12. The volcano plot of gene expression pattern (a), the GO enrichment bar plot (b), the GO enrichment scatter plot (c), the KEGG enrichment scatter plot (d), the GO Gsea enrichment analysis (e) and the KEGG Gsea enrichment analysis (f) of DEGs between leaf tissue A and flower bud tissue D group.



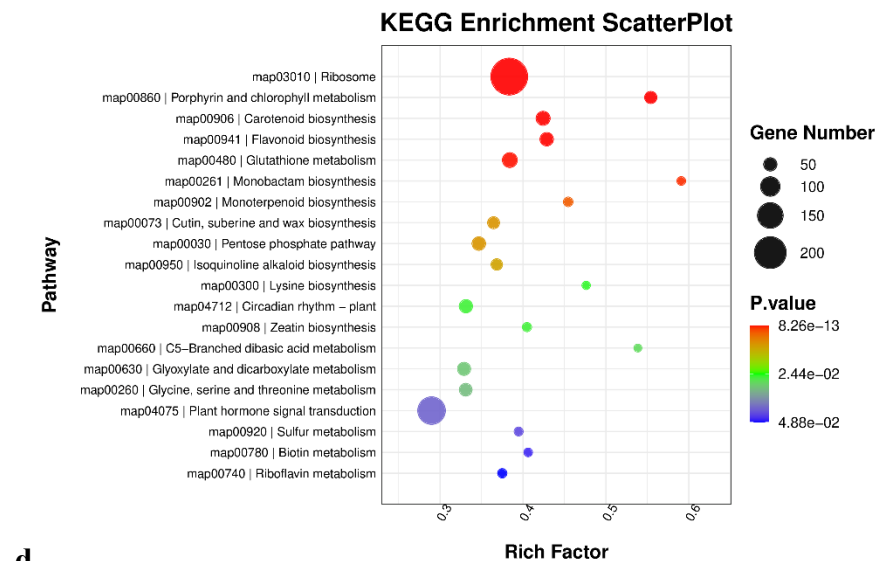
a.



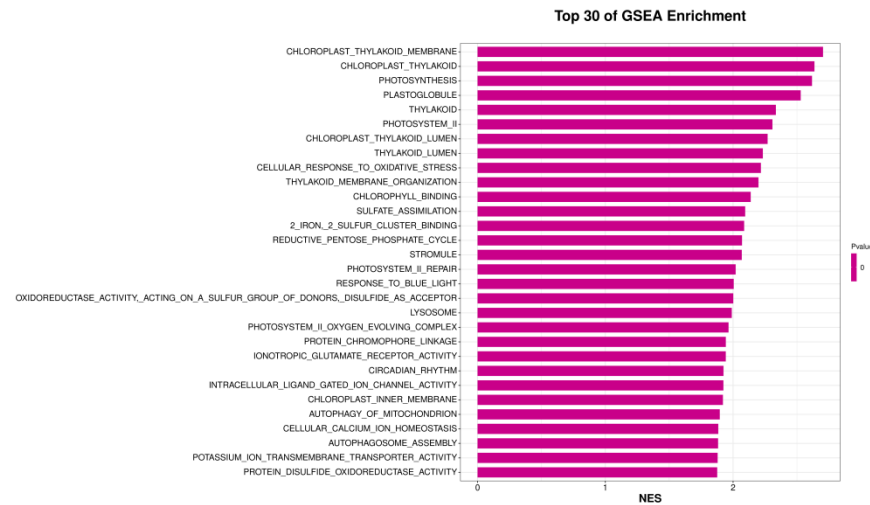
b.



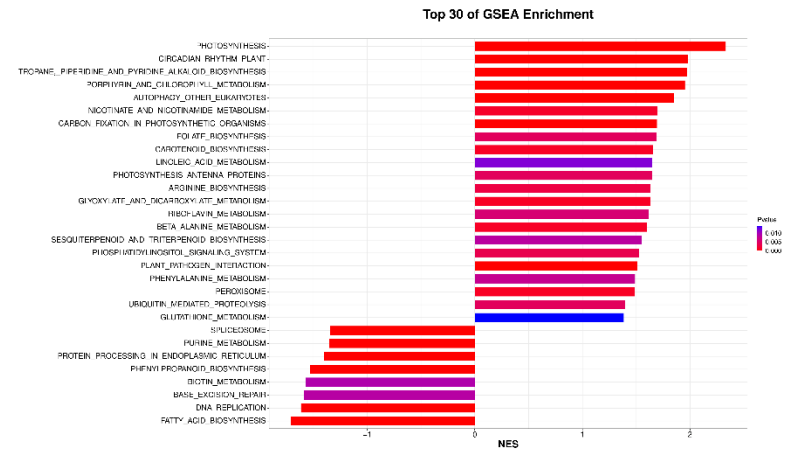
c.



d.

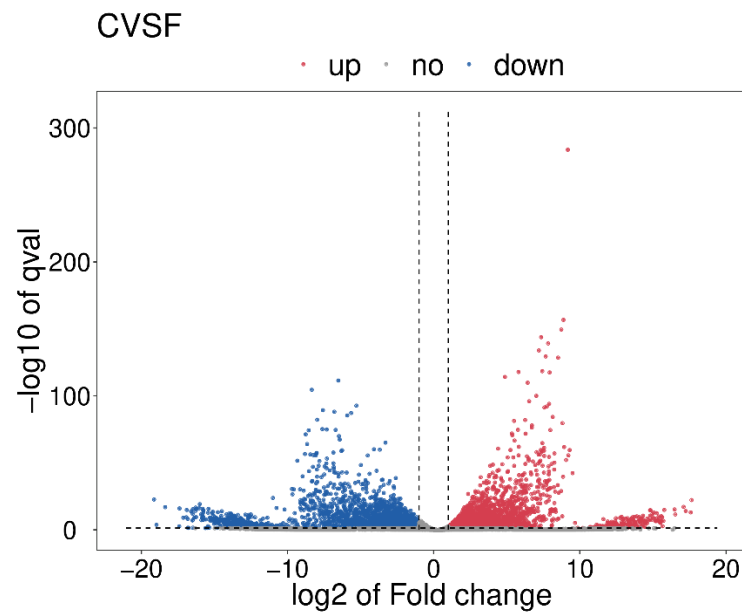


e.

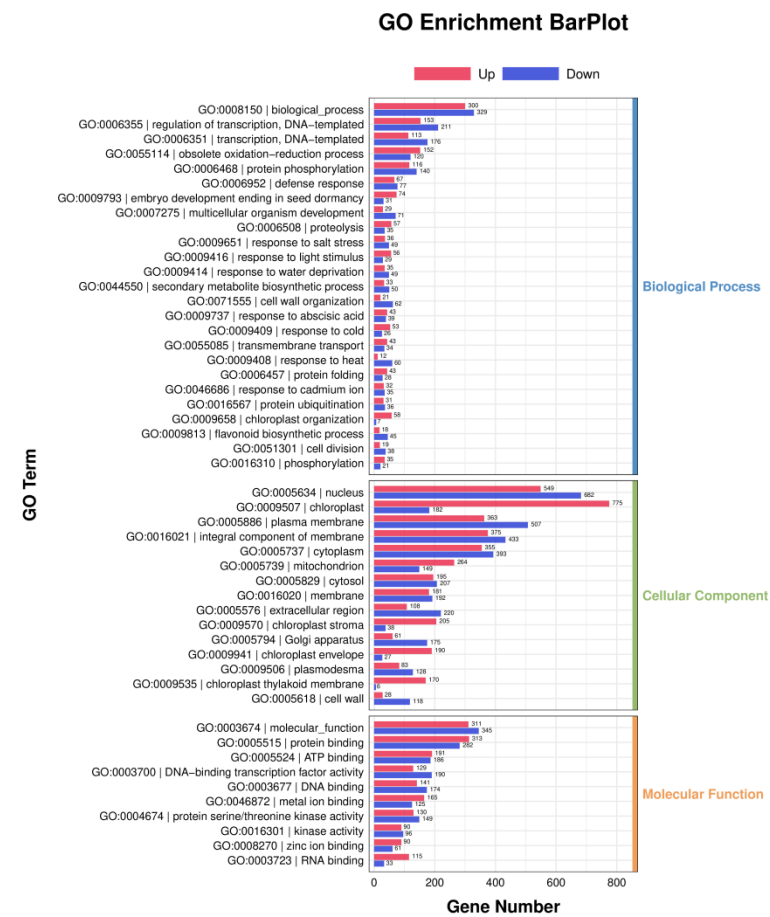


f.

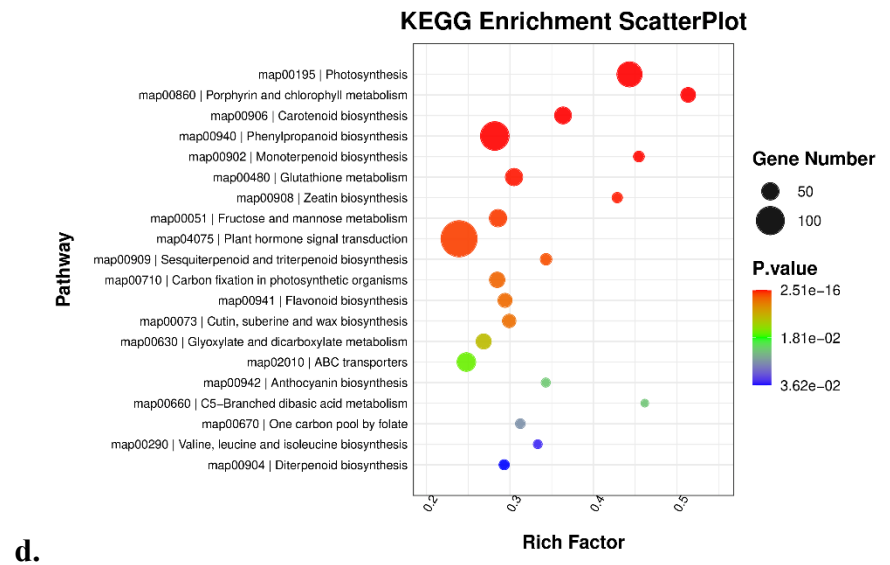
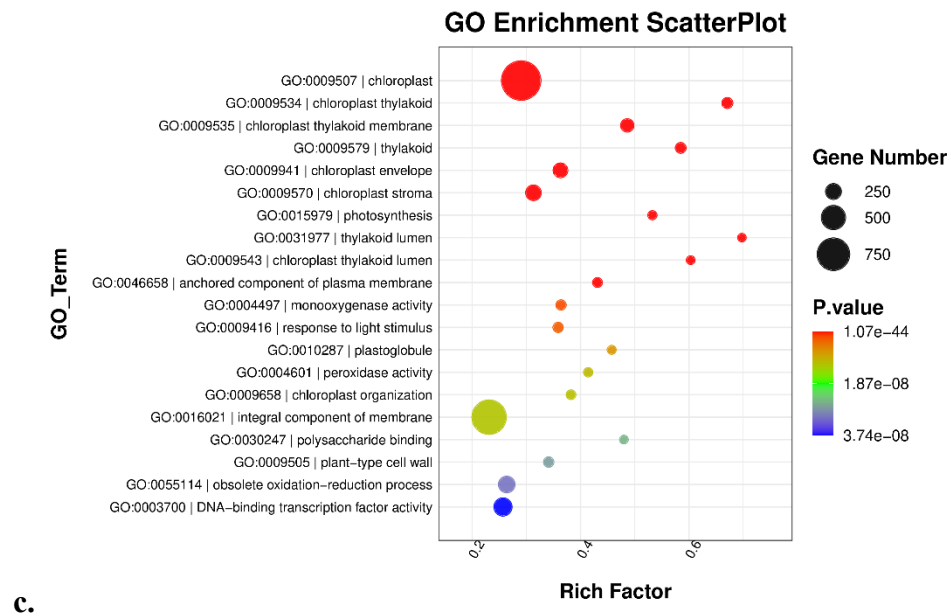
Supplemental Figure S13. The volcano plot of gene expression pattern (a), the GO enrichment bar plot (b), the GO enrichment scatter plot (c), the KEGG enrichment scatter plot (d), the GO Gsea enrichment analysis (e) and the KEGG Gsea enrichment analysis (f) of DEGs between leaf tissue B and flower bud tissue E group.

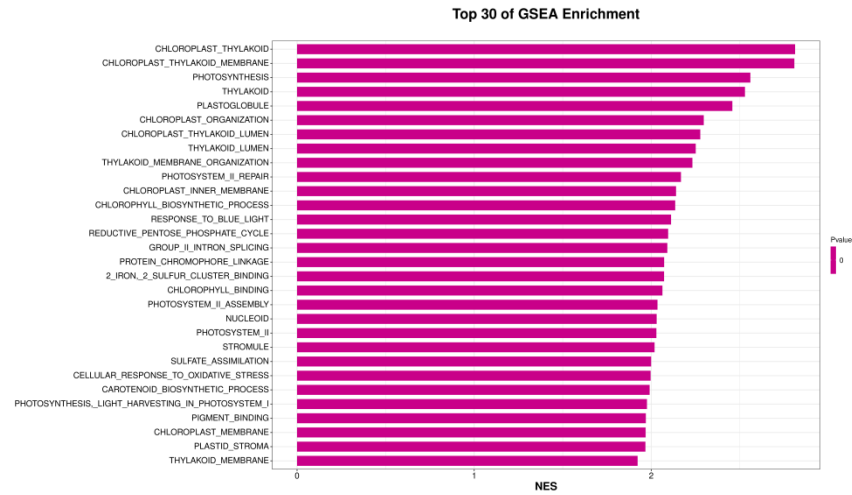


a.



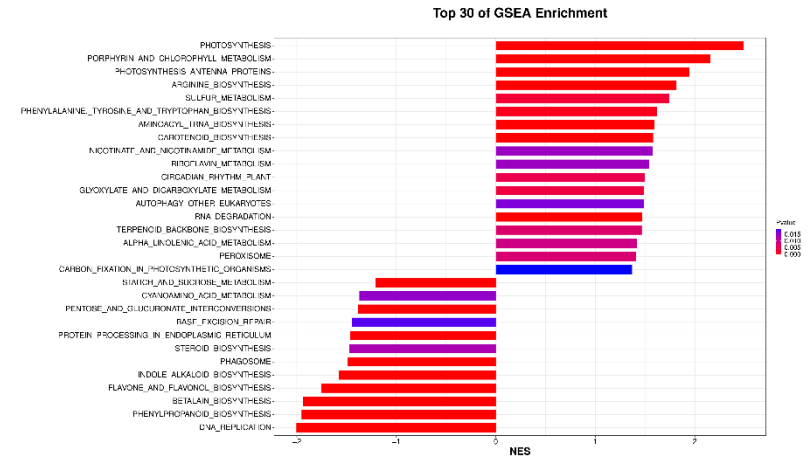
b.





e.

f.



Supplemental Figure S14. The volcano plot of gene expression pattern (a), the GO enrichment bar plot (b), the GO enrichment scatter plot (c), the KEGG enrichment scatter plot (d), the GO Gsea enrichment analysis (e) and the KEGG Gsea enrichment analysis (f) of DEGs between leaf tissue C and flower bud tissue F group.