

Figure S1. Showed that the ArcGIS mapping of a bioclimatic variable on the selected regions, showed variation in (A), Prec-Seasonality and (B), Mean diurnal range, respectively

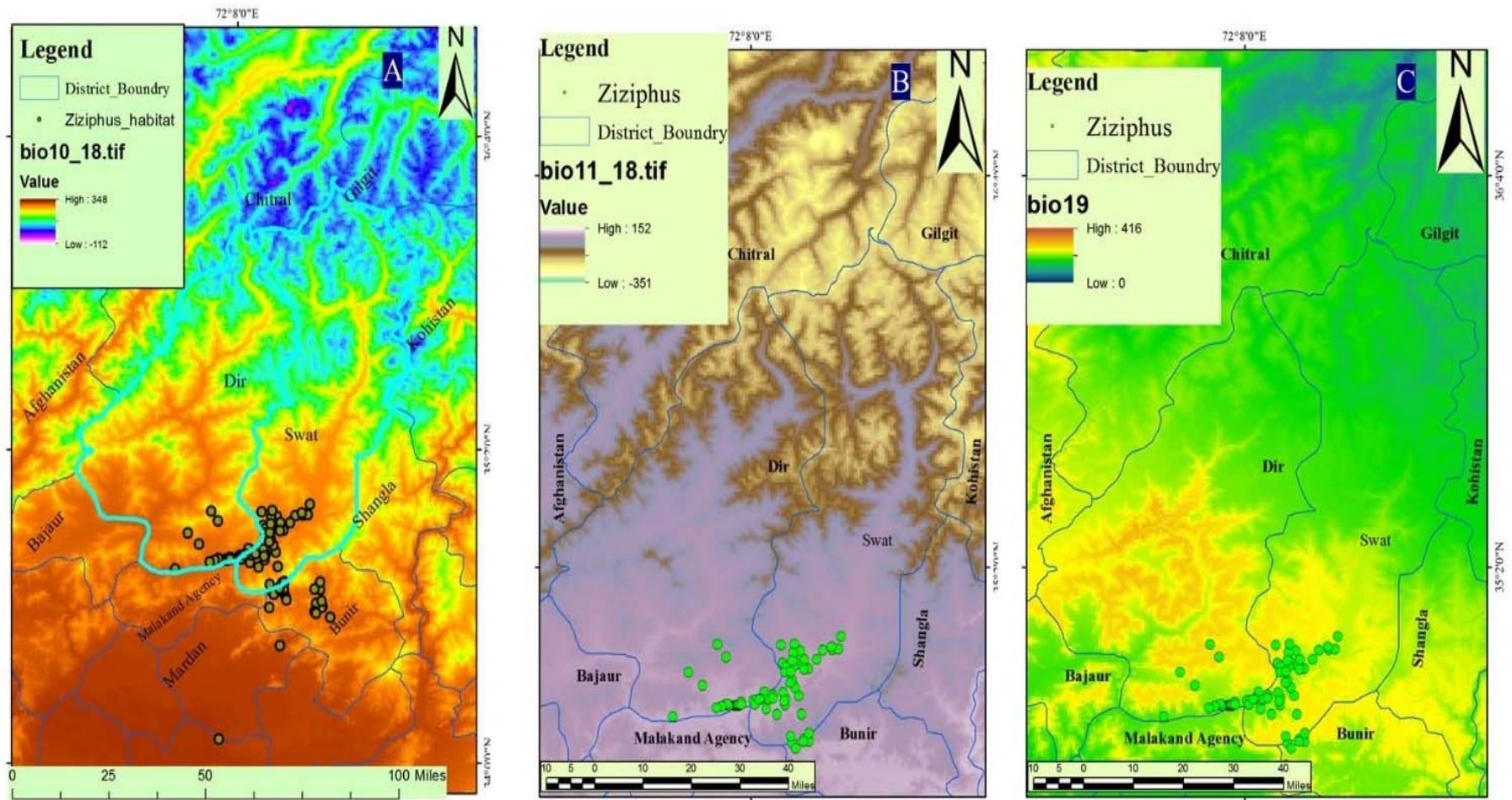


Figure S2. Applied ArcGIS mapping of a bioclimatic variable on the selected regions, (A), distribution in the selected remote regions of *Z. nummularia* genotypes, and (B and C), showing accrued temperature ranges.