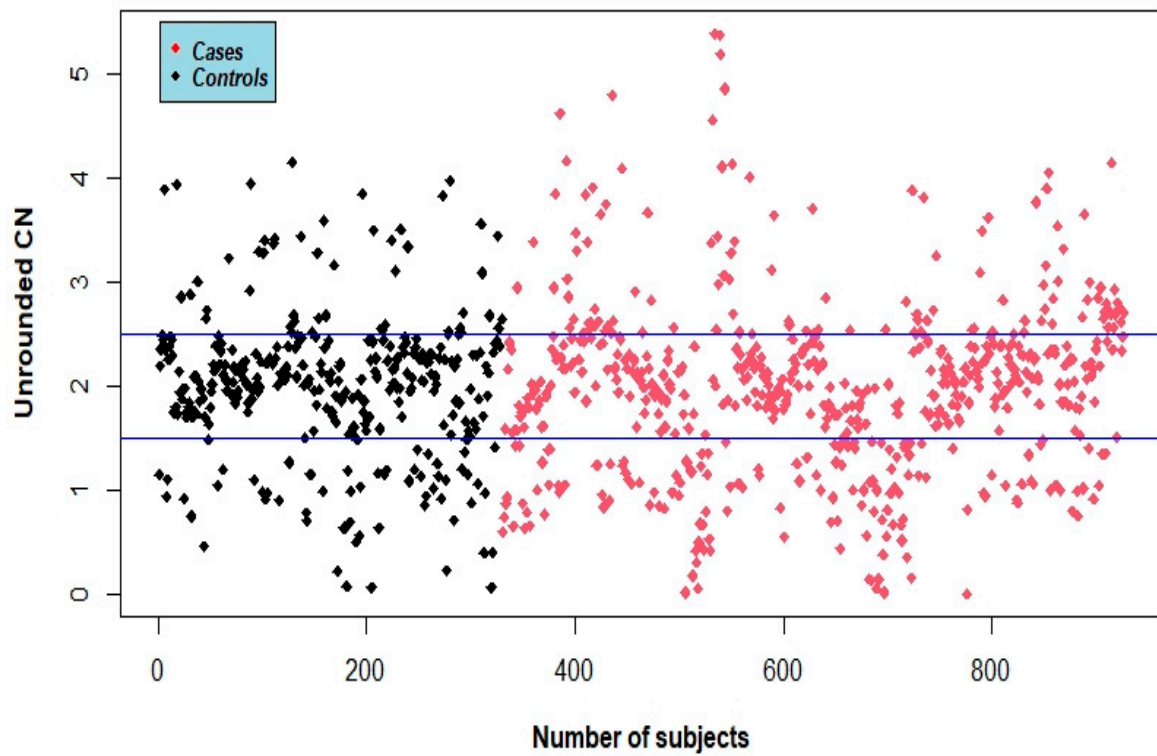
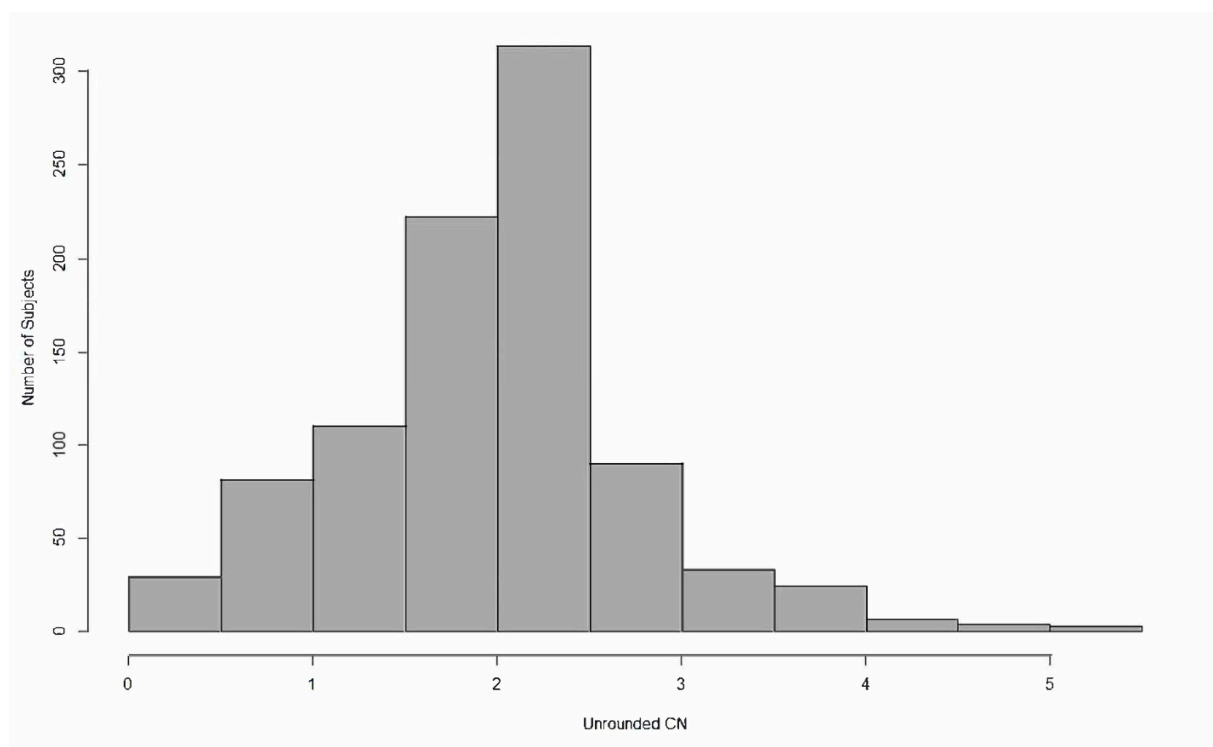


Supplementary Text: Padded amplicon, where the context sequence surrounding the TaqMan® probe is shown in brackets.

```
>hg38_dna range=chr1:161626829-161627031 5'pad=0 3'pad=0 strand=+ repeatMasking=none  
GAATAGGCAATCAAAGGAATATTGAAAGACTCTTGTGGCCTTCAGGAATAAGCTGACGGTCGCCACAGA  
GTGGCTGCAGAAATTGTGA[AGGAGAACTAACTCAATGTAAACAT]CAGGGTGGCGAAGGGCGGGACT  
GGTAGTGCTCAGAGTGGCAATTCGTGGTTTCTAAGGTGTCACAGGGCCTCGGTGAGACCAACTTTATT
```



Supplementary Figure S1: Scatter plot of unrounded CNV. Cases and controls are color coded differently.



Supplementary Figure S2: Histogram of unrounded CNV.