

1 Accuracy

0.8 Accuracy

0.5 Accuracy

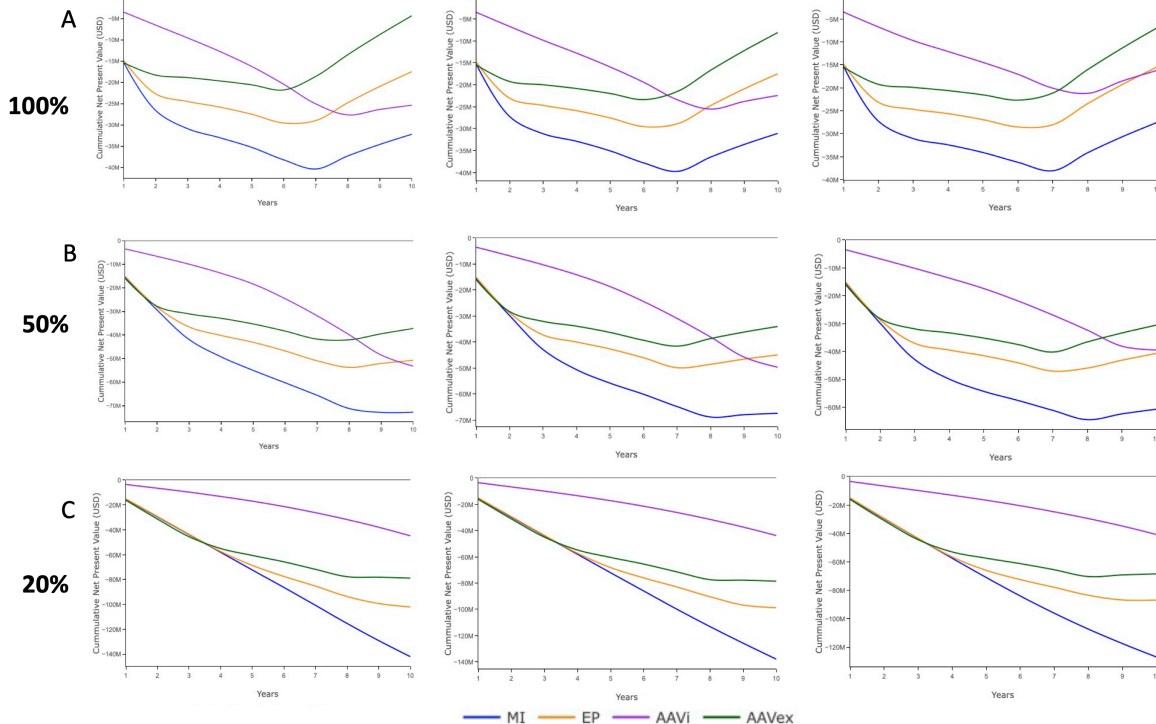


Figure S6: Economic analysis of farm systems with vaccination programs for linked swIAV resistance alleles for varied selection selection accuracies. MI = Microinjection. EP = Electroporation. AAVi = AAV *in vivo*. AAVex = AAV *ex vivo*. A) 100% germline transmission. B) 50% germline transmission. C) 20% germline transmission.