

Figure S1. KEGG (a) and GO (b) enrichment analysis of black plumage associate genes.

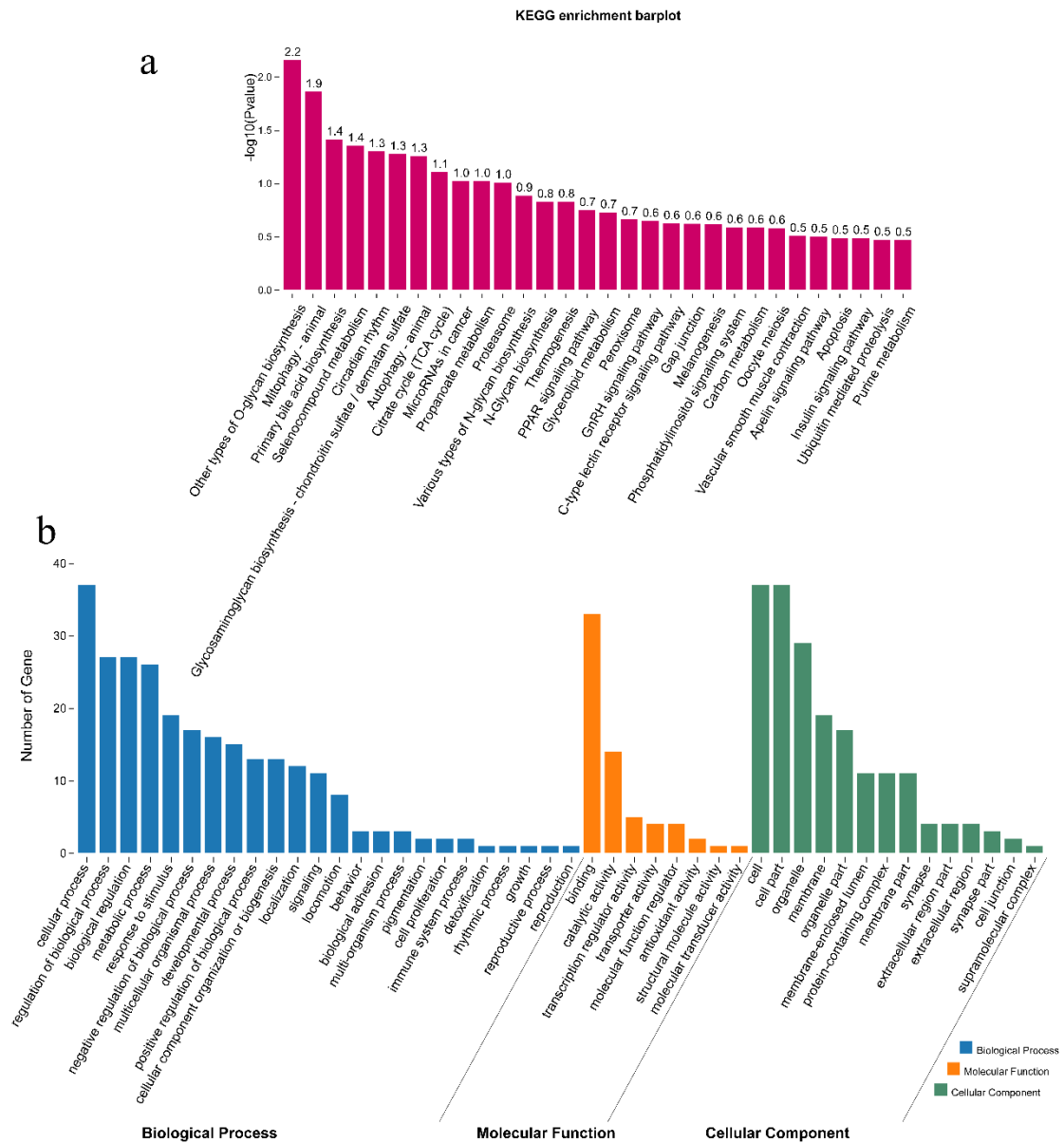


Figure S2. KEGG (a) and GO (b) enrichment analysis of white plumage associate genes.

KEGG enrichment barplot

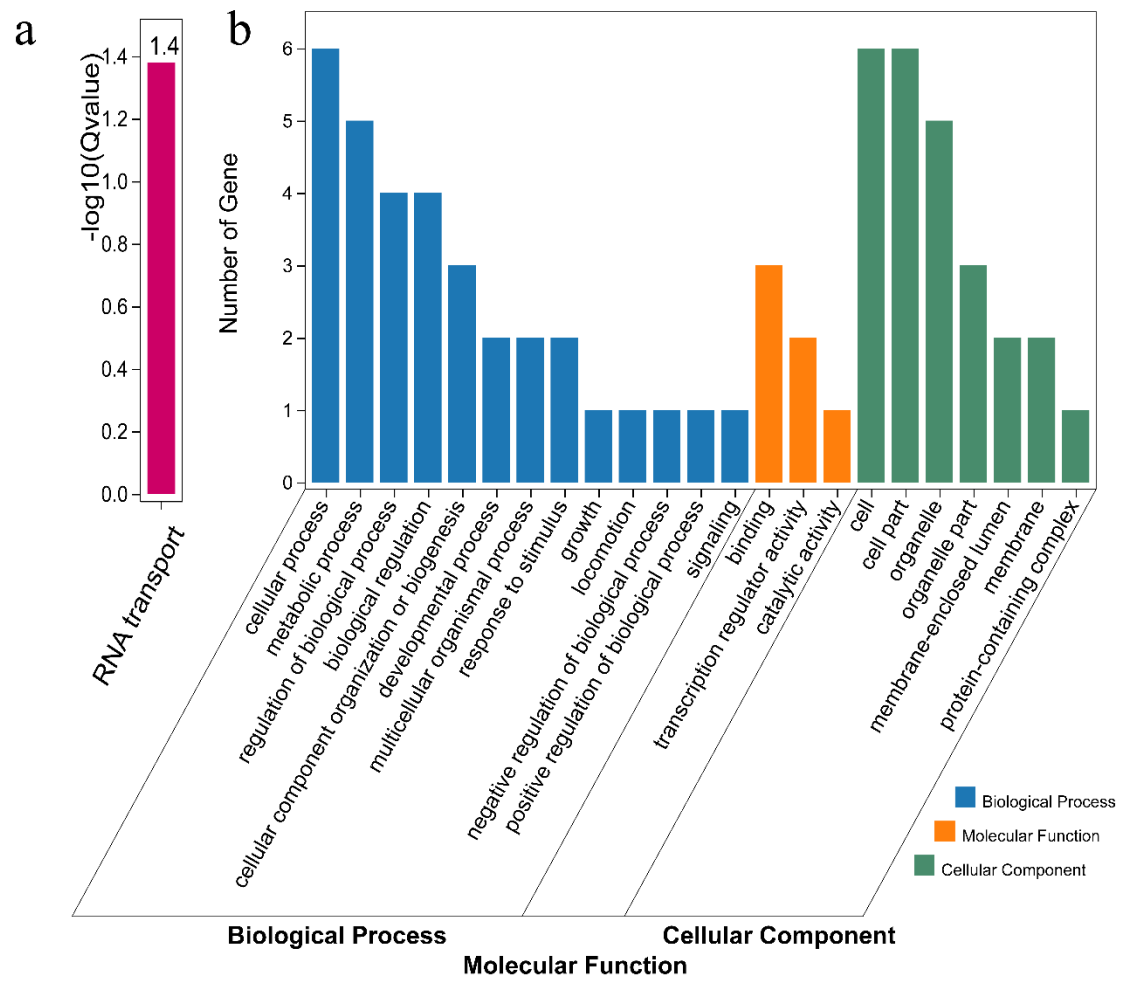


Figure S3. KEGG (a) and GO (b) enrichment analysis of spot plumage associate genes.

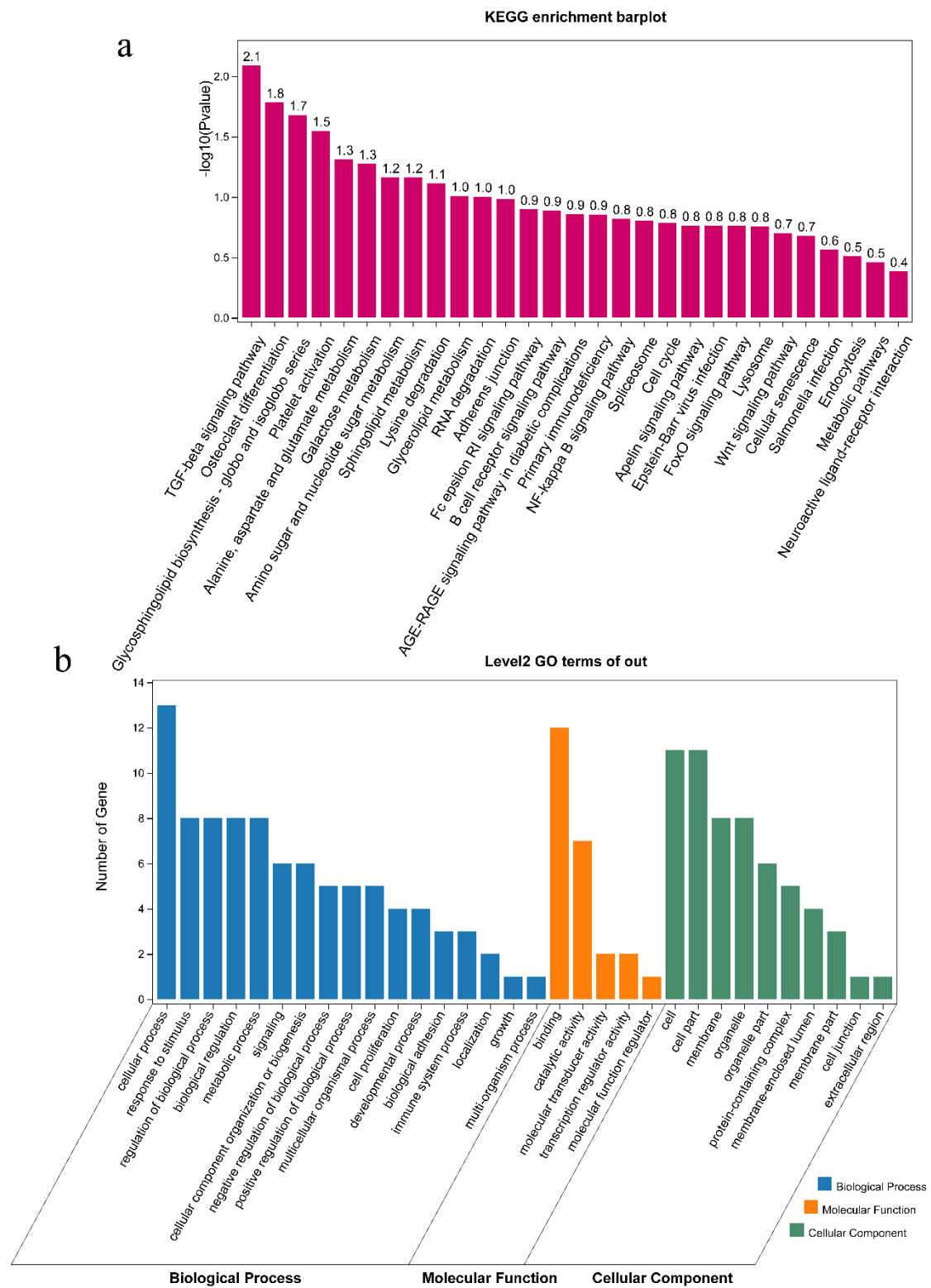


Figure S4. KEGG (a) and GO (b) enrichment analysis of gray plumage associate genes.

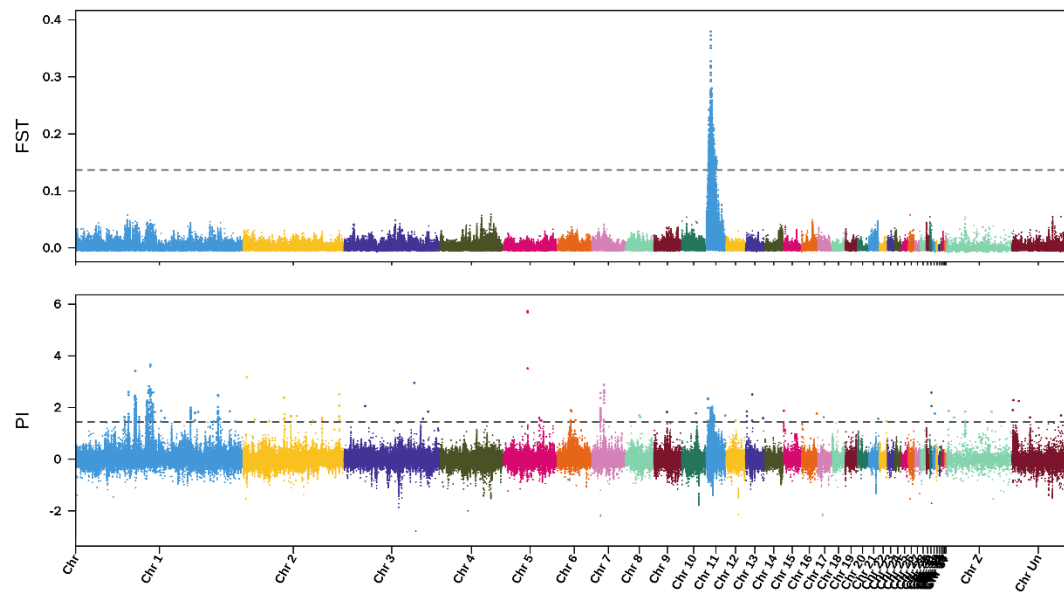


Figure S5. Genome-wide selective signals across white plumage duck based on global F_{ST} (top) and $\log_2 \pi$ ratio (bottom).

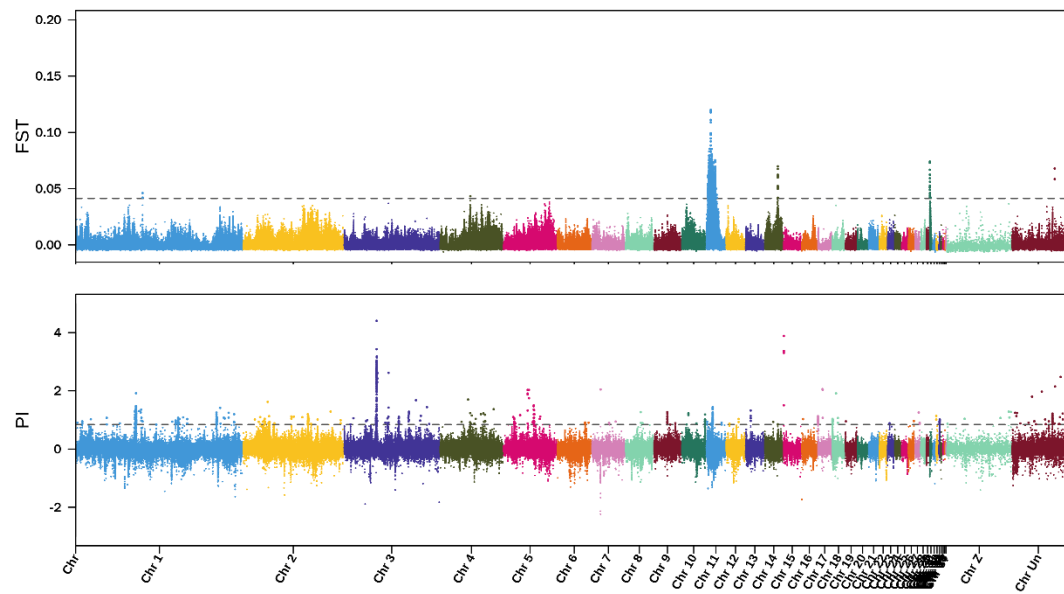


Figure S6. Genome-wide selective signals across spot plumage duck based on global F_{ST} (top) and $\log_2 \pi$ ratio (bottom).

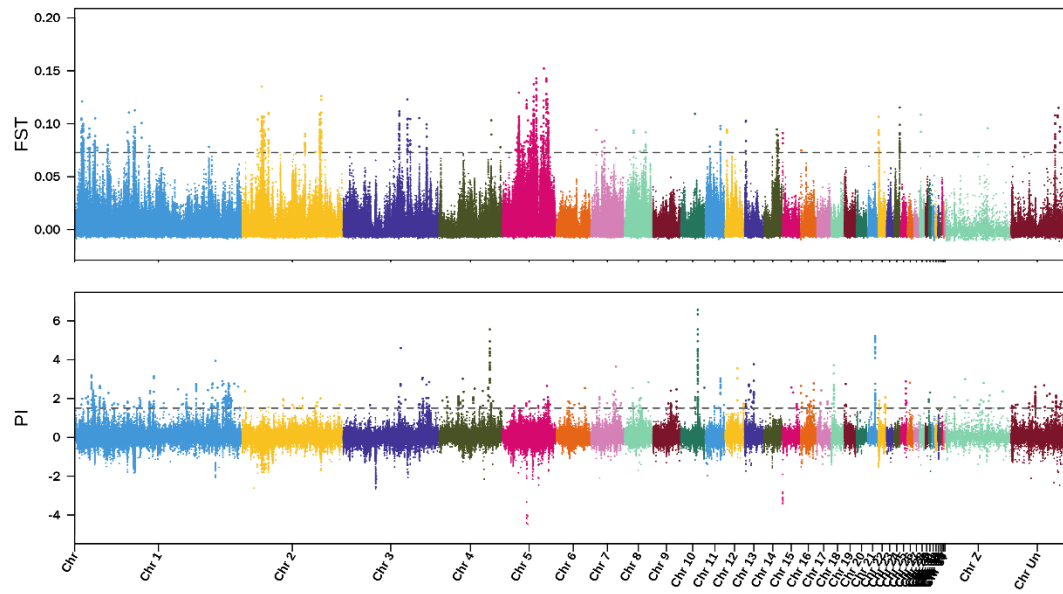


Figure S7. Genome-wide selective signals across gray plumage duck based on global F_{ST} (top) and $\log_2 \pi$ ratio (bottom).

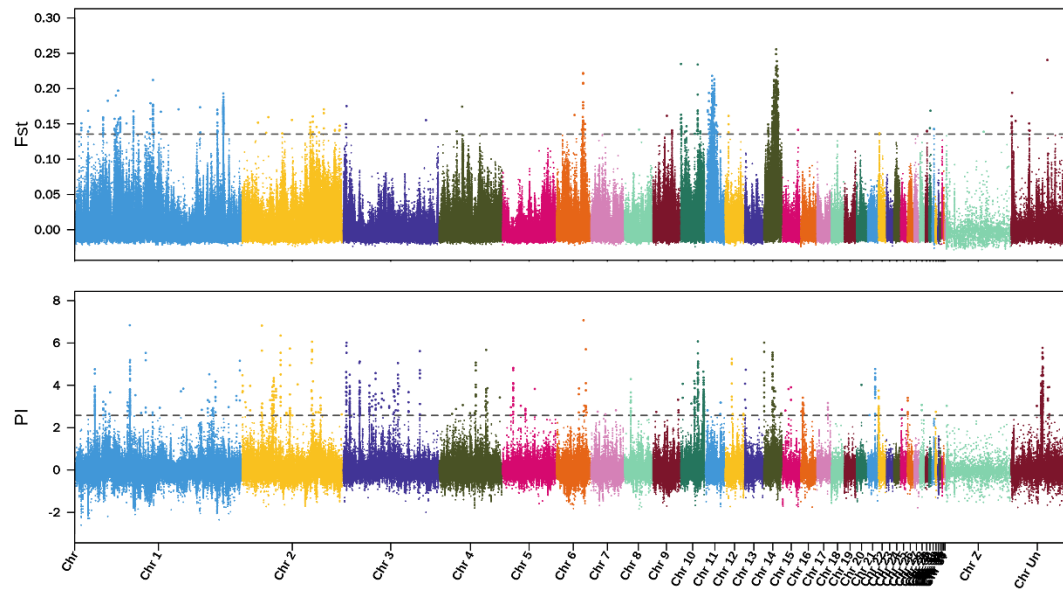


Figure S8. Genome-wide selective signals across black plumage duck based on global F_{ST} (top) and $\log_2 \pi$ ratio (bottom).