

Supplementary Figure 1

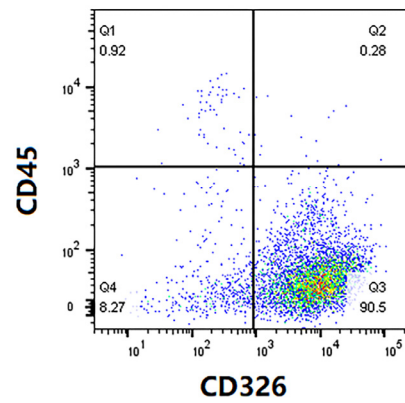


Figure S1. The purity of enriched TECs cells was detected by flow cytometry.

Supplementary Figure 2

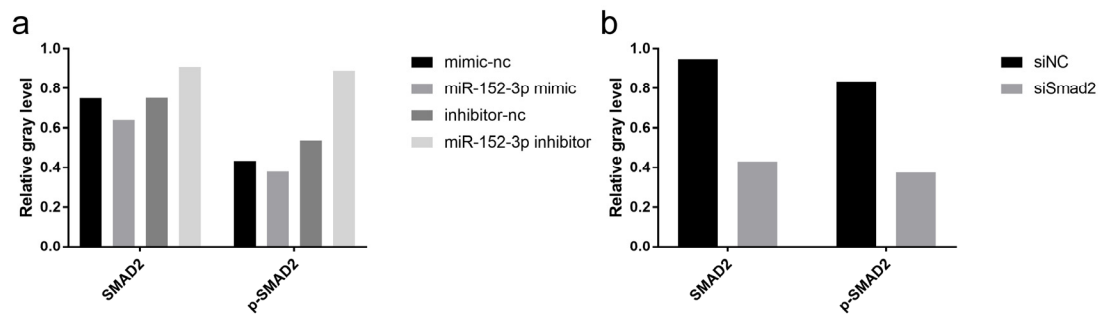


Figure S2. Grayscale analysis of WB bands. (a) miR-152-3p affects the expression of SMAD2 protein in MTEC1 cells. (b) Silencing Smad2 decreased the expression of SMAD2 protein.

Relative gray level = target band/ β -actin.