

Supplementary Materials

Improved Large-scale Homology Search by Two-Step Seed Search using Multiple Reduced Amino Acid Alphabets

Kazuki Takabatake, Kazuki Izawa, Motohiro Akikawa, Keisuke Yanagisawa, Masahito Ohue, and Yutaka Akiyama*

Department of Computer Science, School of Computing, Tokyo Institute of Technology; takabatake@bi.c.titech.ac.jp (K.T.); izawa@bi.c.titech.ac.jp (K.I.); akikawa@bi.c.titech.ac.jp (M.A.); yanagisawa@c.titech.ac.jp (K.Y.); ohue@c.titech.ac.jp (M.O.)

*Correspondence: akiyama@c.titech.ac.jp

Supplementary Figures

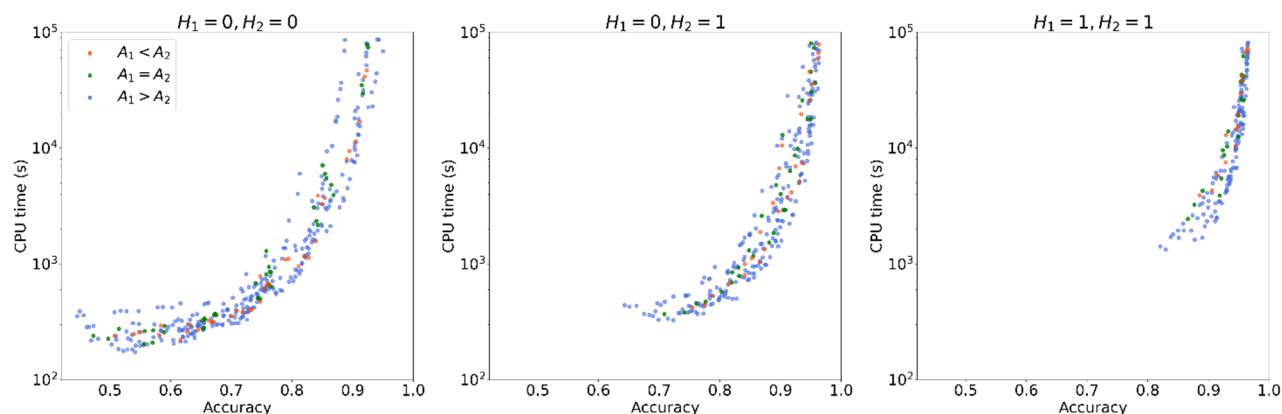


Figure S1. Results of TSSS for magnitude relationship between A_1 and A_2 .

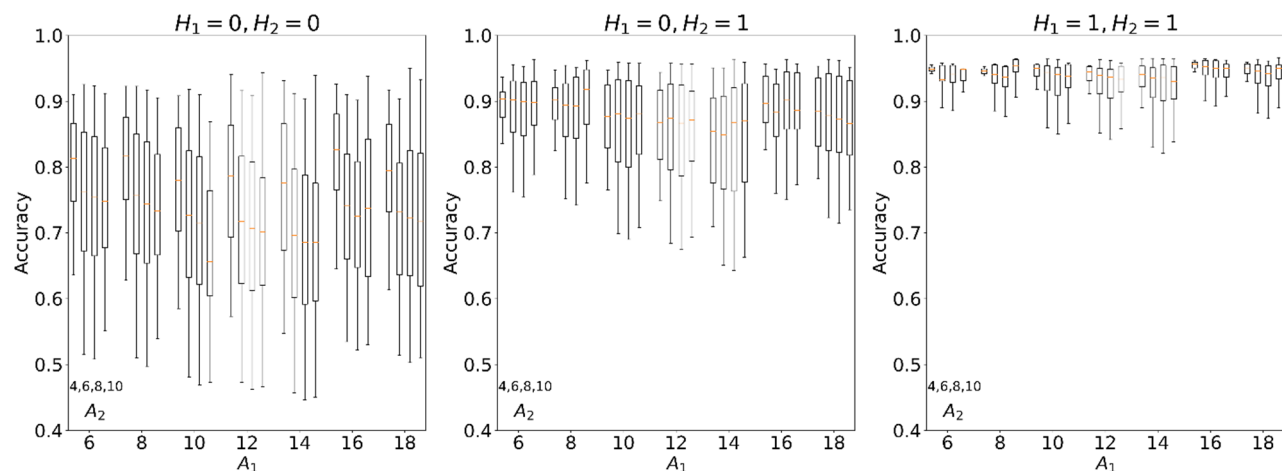


Figure S2. Boxplots based on accuracy for all combinations of A_1 and A_2 .

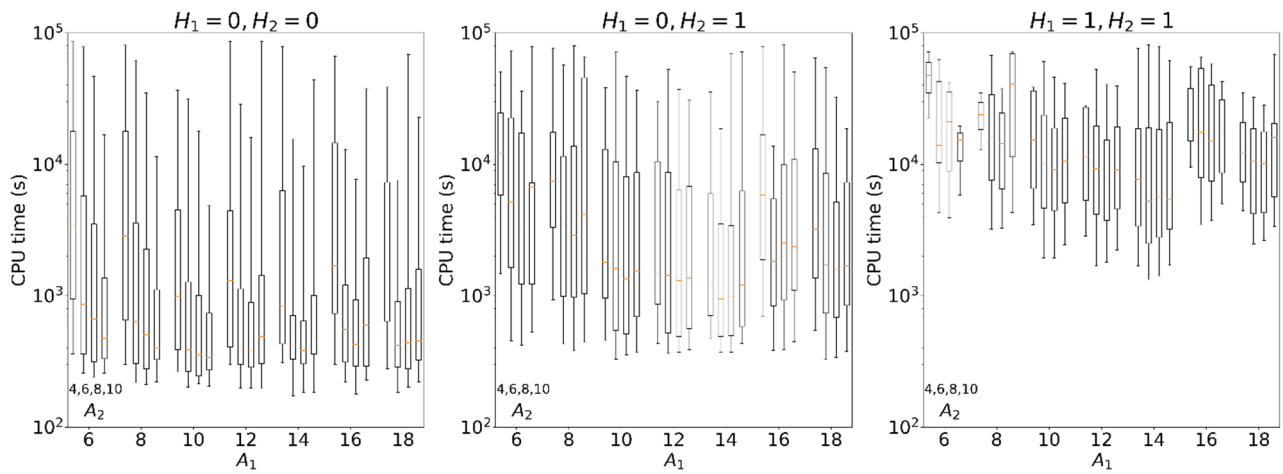


Figure S3. Boxplots based on CPU time for all combinations of A_1 and A_2 .