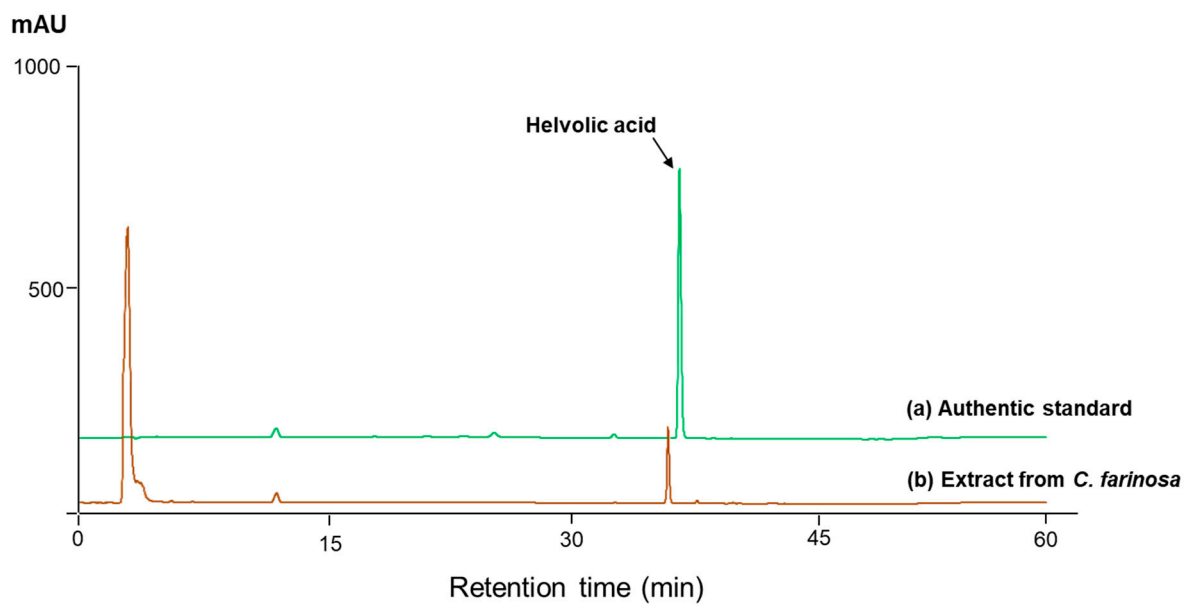


**Supplemental Figure S1.** Putative fragmentation mechanism of protostadienol leading to the characteristic fragment ions observed in the GC-MS spectrum.



**Supplemental Figure S2.** HPLC analysis of helvolic acid. Two chromatograms of HPLC analysis, (a) an authentic helvolic acid and (b) the extract from *C. farinosa* mycelium.