

Table S1. Oligonucleotides designed for sited directed mutagenesis of p.*nasABC* region and for obtaining biotinylated DNA samples.

Oligonucleotide	Sequence	Target
PAL1-1_for	GAGAAACCTTCTCACCGCG AAA ACCGGGTATA- CAGGGACGC	Modification of palindromic sequence by sited directed mutagenesis
PAL1-1_rev	GCGTCCCTGTATACCCGG TTT CGCGGTGA- GAAGGTTTCTC	
PAL1-2_for p.nas_rev	GGGACGCCCCGGTGGACCGCACGACG ACCACACCCCATGGCACAGCGCAT	Promoter amplification without palin- dromic region
PAL2-1_for	ATATTCTTAGTATACGTT CTCGT ATTGCACGA- TATGGGGG	Modification of putative consensus bind- ing site sequence by sited directed mutagenesis
PAL2-1_rev	CCCCCATATCGTGCAAT ACGAG AACGTATACTAA- GAATAT	
PAL2-2_for	GTATACGTTTGT GGCCC GCACGATATGGGGGAATT- GGGCGG	Modification of putative consensus bind- ing site sequence by sited directed mutagenesis
PAL2-2_rev	CCGCCCAATTCCCCCATATCGTG GGCC ACAAAC- GTATAC	
pVA-for-Biot N-bGal-rev	GCTCGGAATTAACCTCACTAAAG GCTCCGGGAAATAGCAGACAC	Biotinylated p. <i>nasABC</i>
p.fdx_for p.fdx_rev-Biot	TACTTCGTACGCGCTGTTCT GTTACCGTGGGCATCAACAA	Biotinylated p. <i>fdx</i>
Glc_for Glc_rev-Biot	GCATTGGTAAACATATGAAAGC GTGAAGAAGCTGGACATGTAC	Biotinylated glucose dehydrogenase

The mutant sequences are shown in red color.

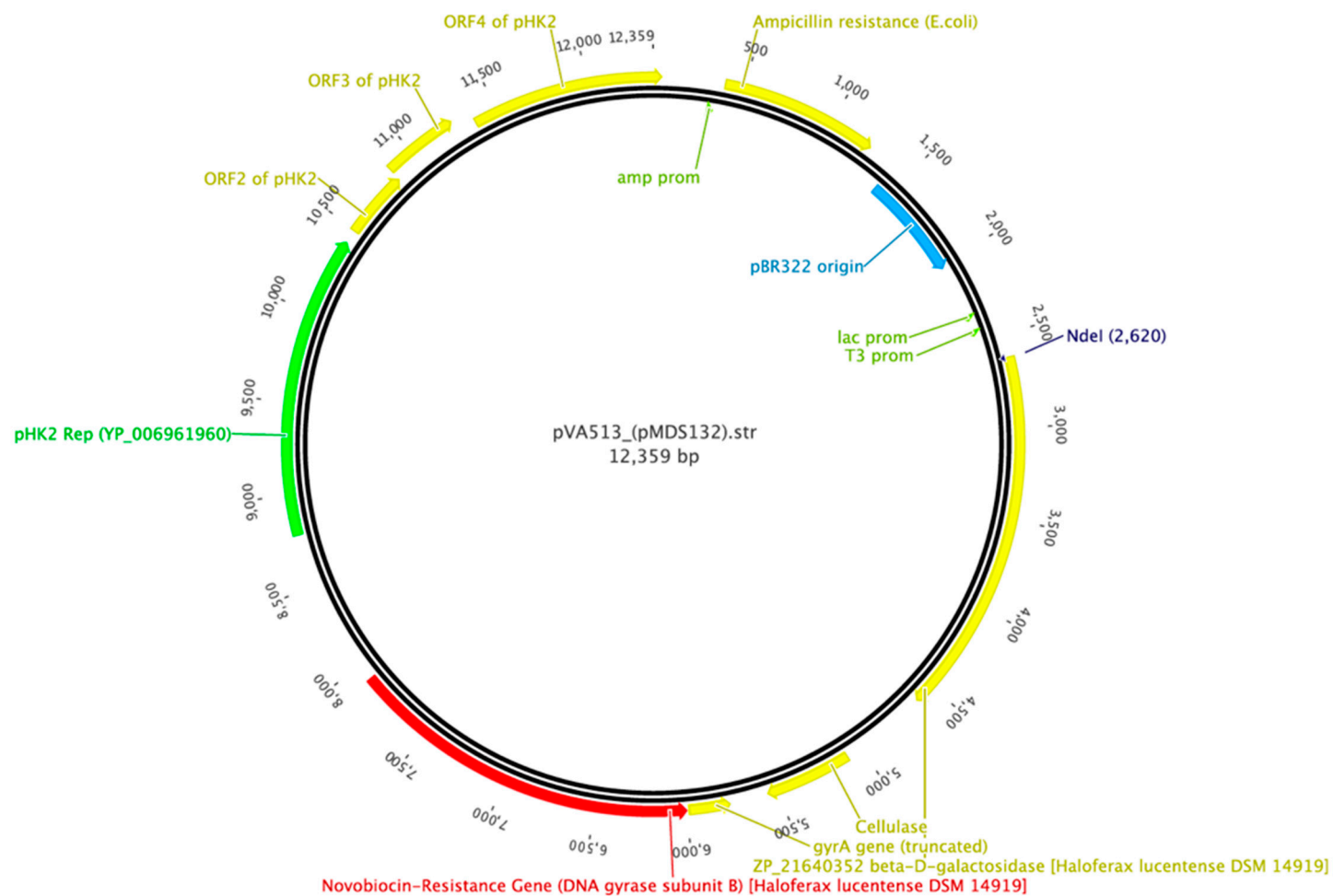


Figure S1. pVA513 halophilic expression vector, which was kindly provided by Mike Dyall-Smith (University of Melbourne, Australia).

Reference

Serrano-Gomicia, J.A. Ciclo del glioxilato en el arquea halófilo *Haloferax volcanii*: análisis bioquímico, filogenético y transcripcional. Ph.D. Dissertation, University of Alicante, Spain. 2000.

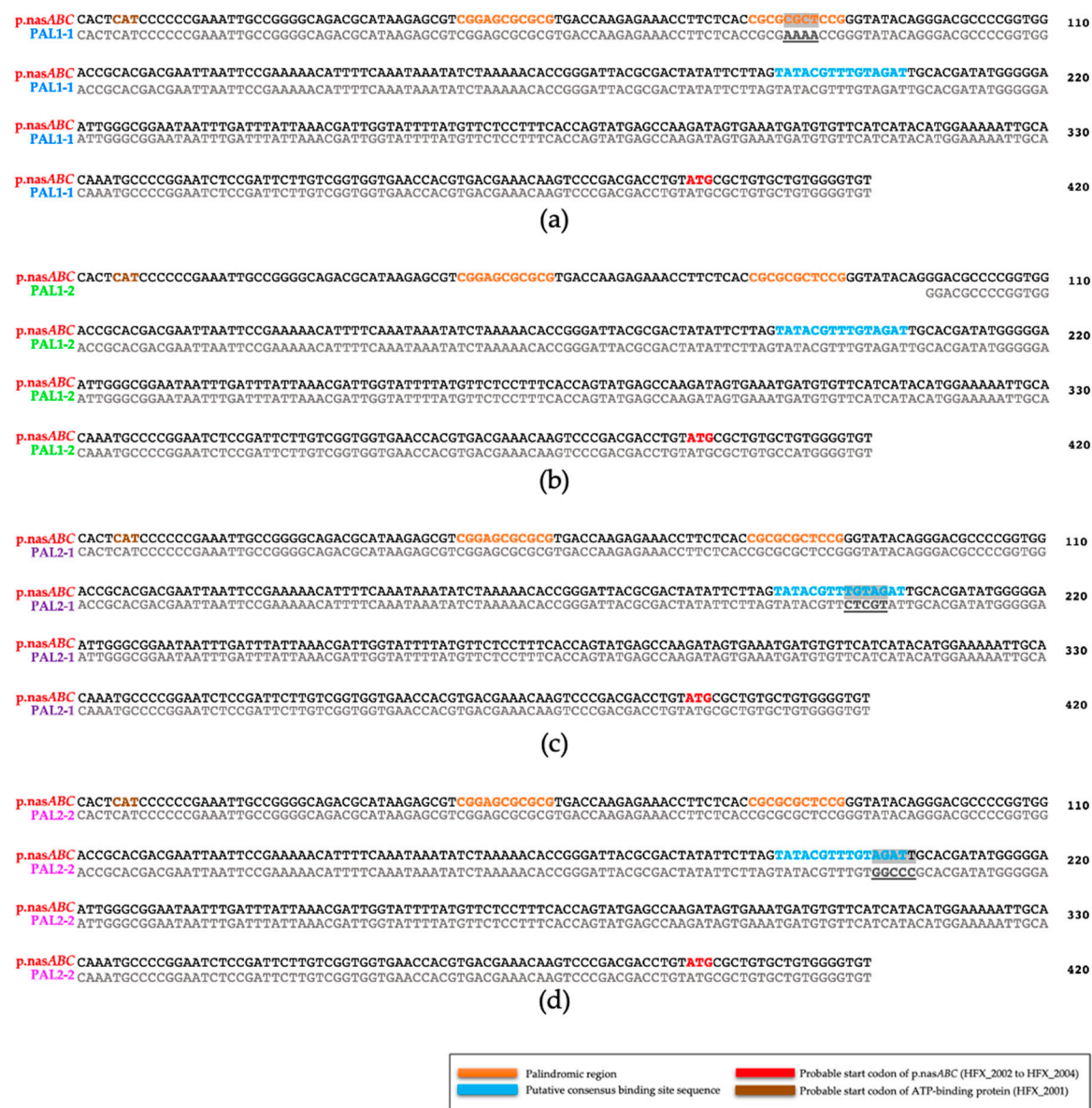
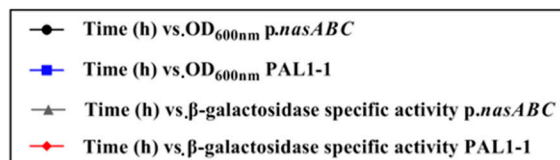
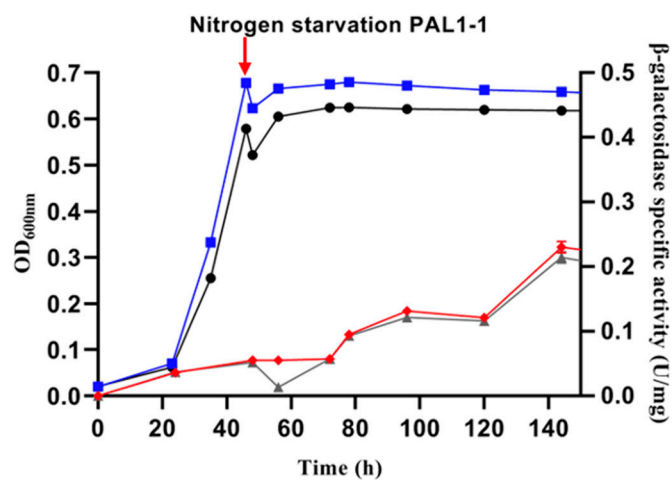
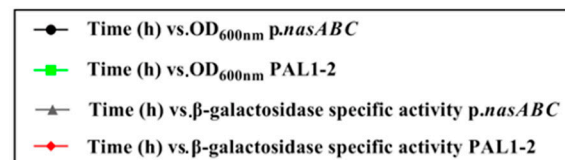
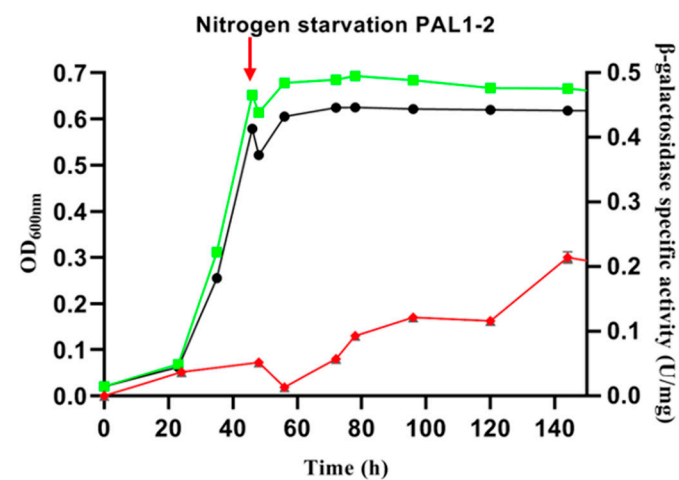


Figure S2. Sequence of promoter region in pVA-PAL1-1 (a), pVA-PAL1-2 (b), pVA-PAL2-1(c), and pVA-PAL2-2 (d).



(a)



(b)

Figure S3. Cell growth, followed by measuring OD_{600nm} , and β -galactosidase specific activity, determined for *Hfx. mediterranei* *p.nasABC* PAL1-1 transformants (a) and PAL1-2 transformants (b) under nitrogen-starved conditions. Time point where nitrogen starvation starts is indicated with a red arrow.