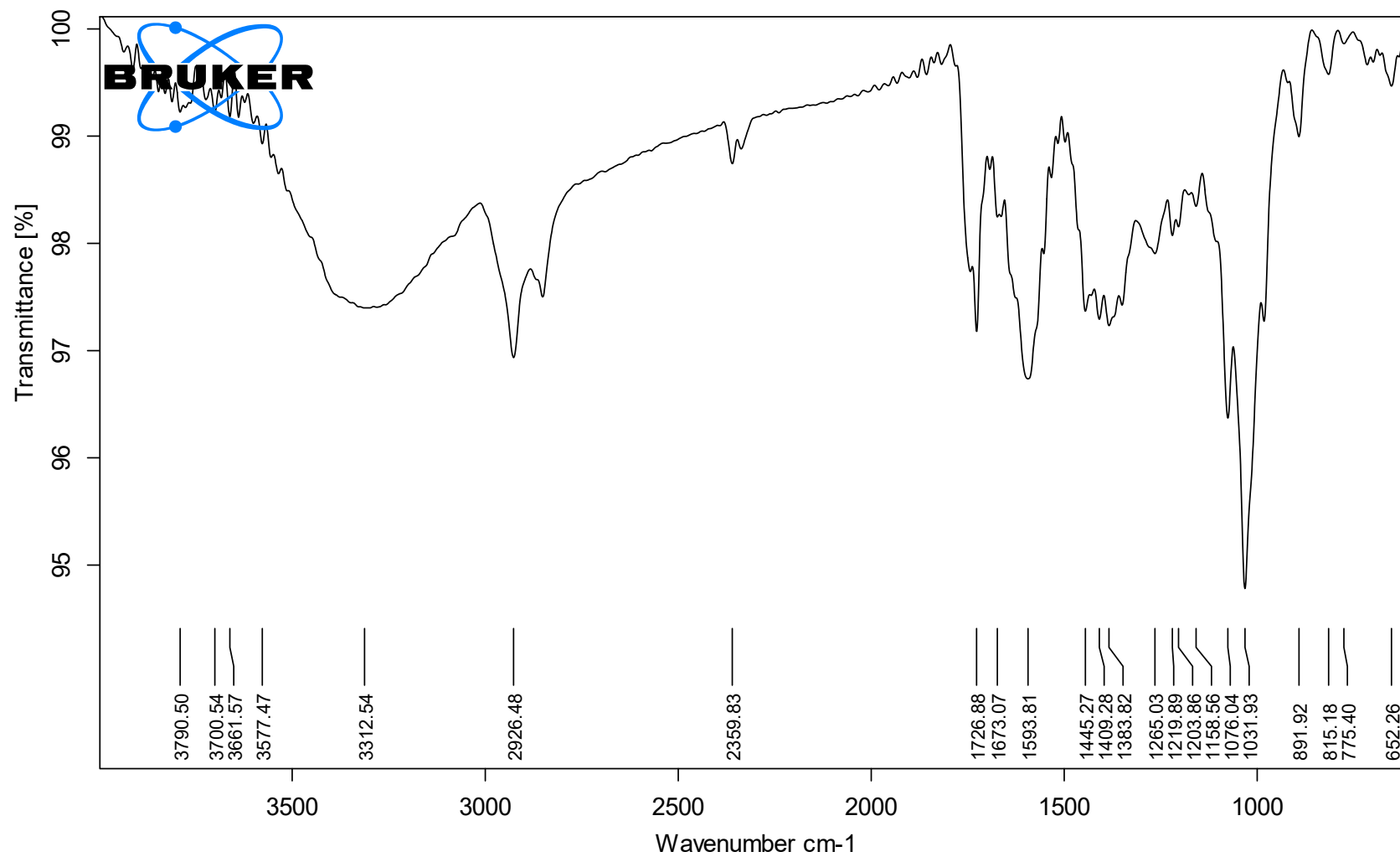


C:\Users\Public\Documents\Bruker\OPUS_8.7.41\MEAS\Carbopol.0

Carbopol sample

01-03-2023

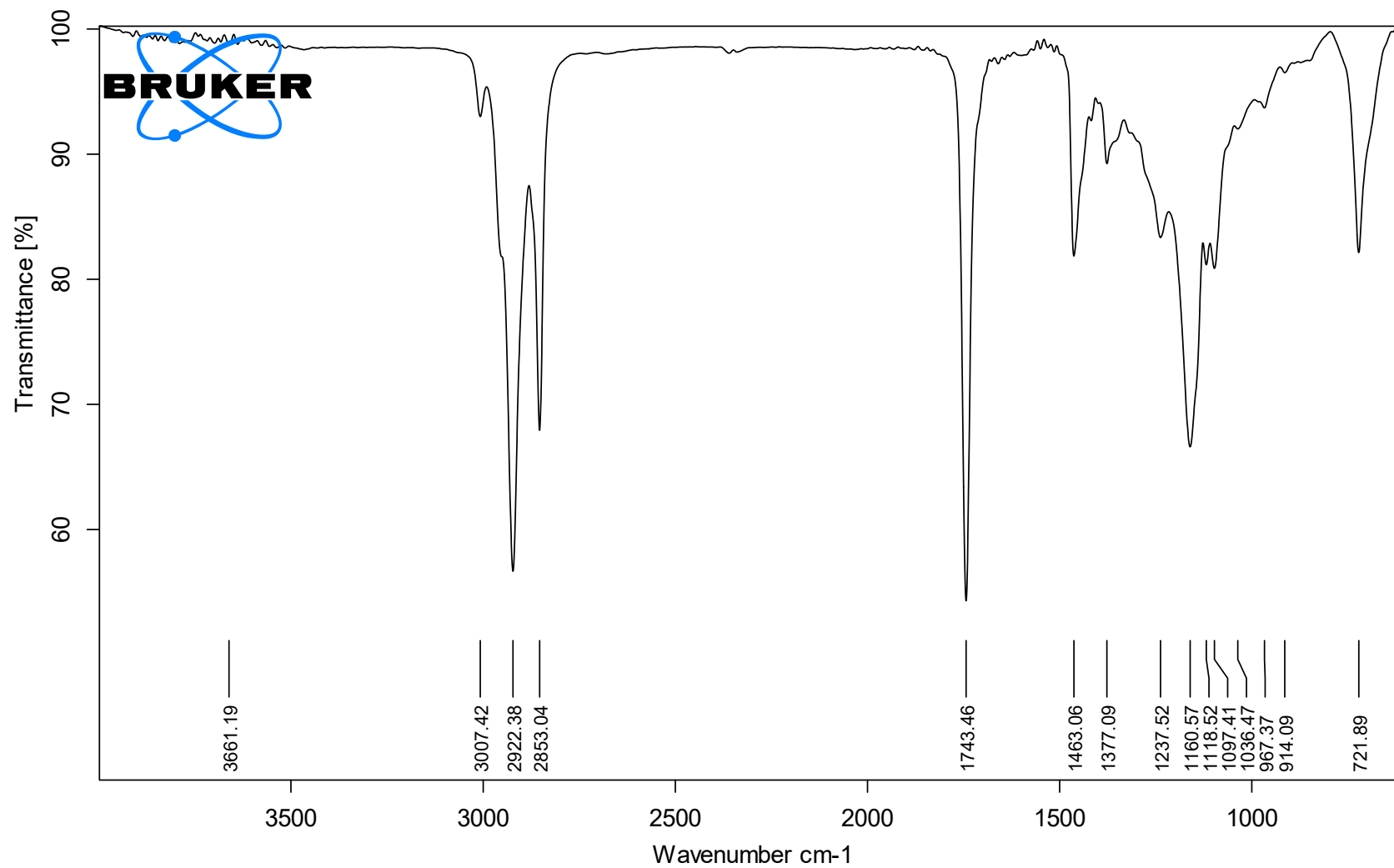


C:\Users\Public\Documents\Bruker\OPUS_8.7.41\MEAS\Plant Extract.0

Plant Extract

sample

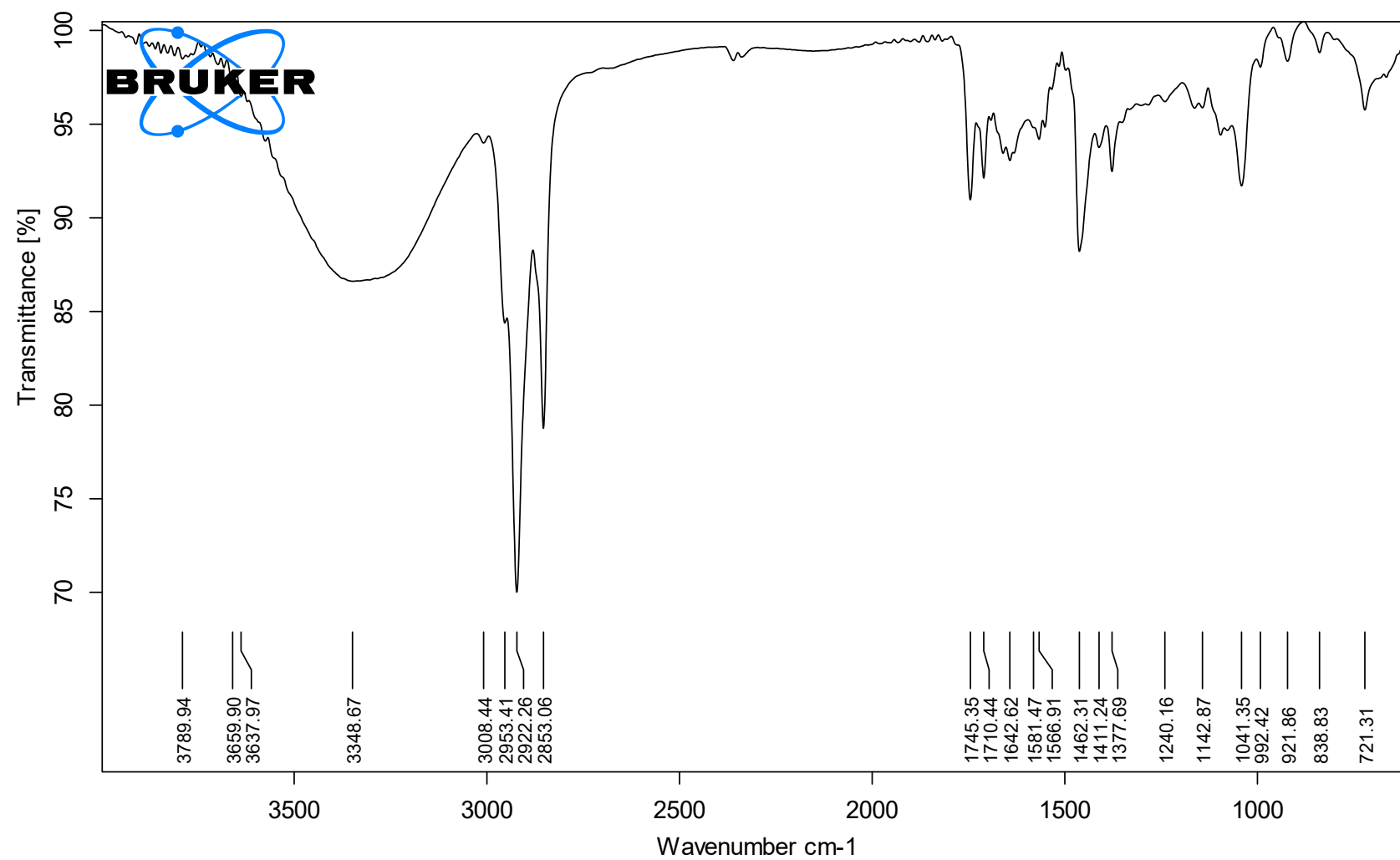
01-03-2023



C:\Users\Public\Documents\Bruker\OPUS_8.7.41\MEAS\Til oil.0

Til oil sample

01-03-2023

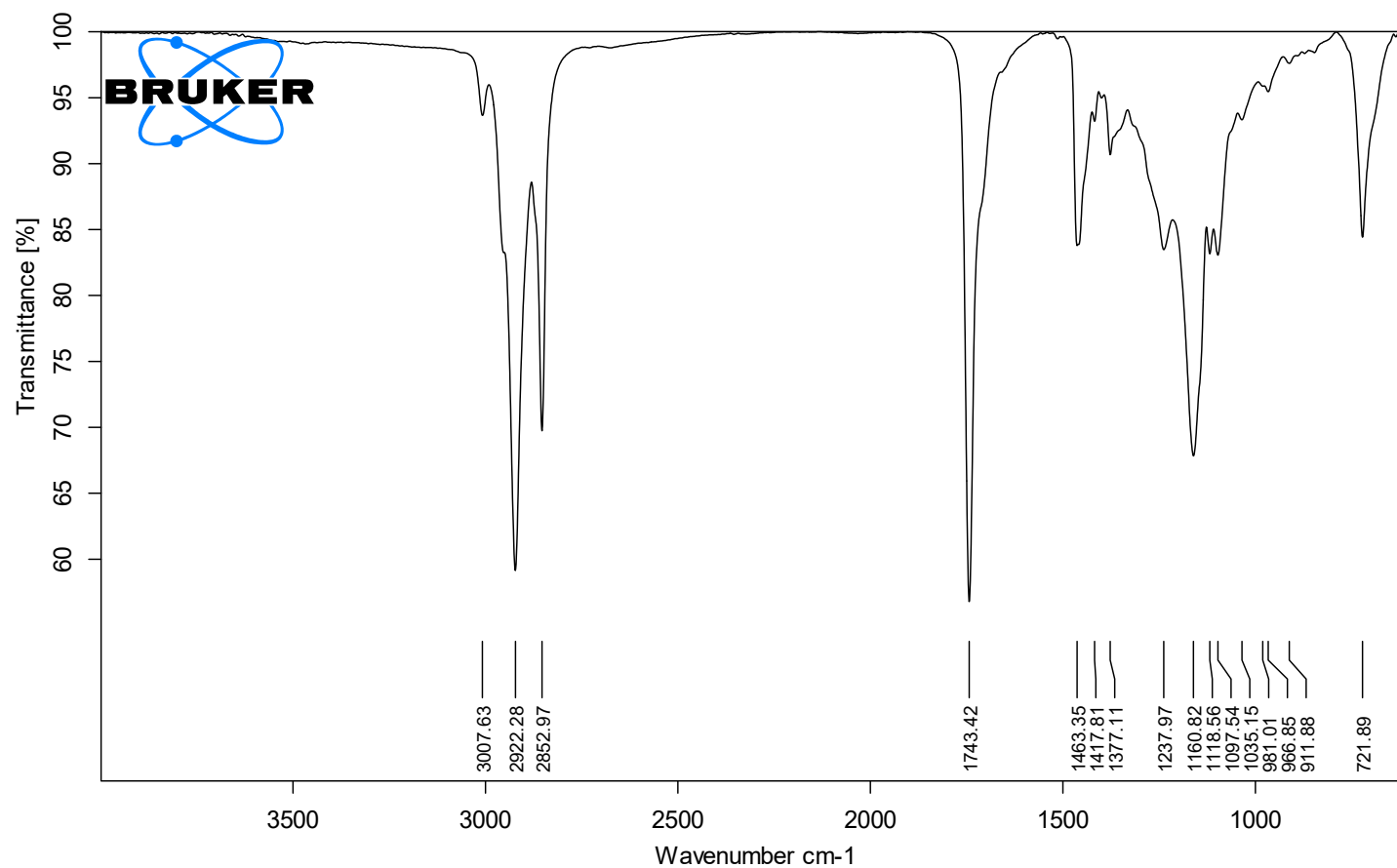


C:\Users\Public\Documents\Bruker\OPUS_8.7.41\MEAS\TE 2.0

TE 2

sample

01-03-2023



C:\Users\Public\Documents\Bruker\OPUS_8.7.41\MEAS\Physical mixture.1	Physical mixture	sample	01-03-2023
--	------------------	--------	------------

Figure S1. Compatibility studies of (A) Carbopol; (B) extract; (C) sesame oil; (D) physical mixture; (E) Emulgel

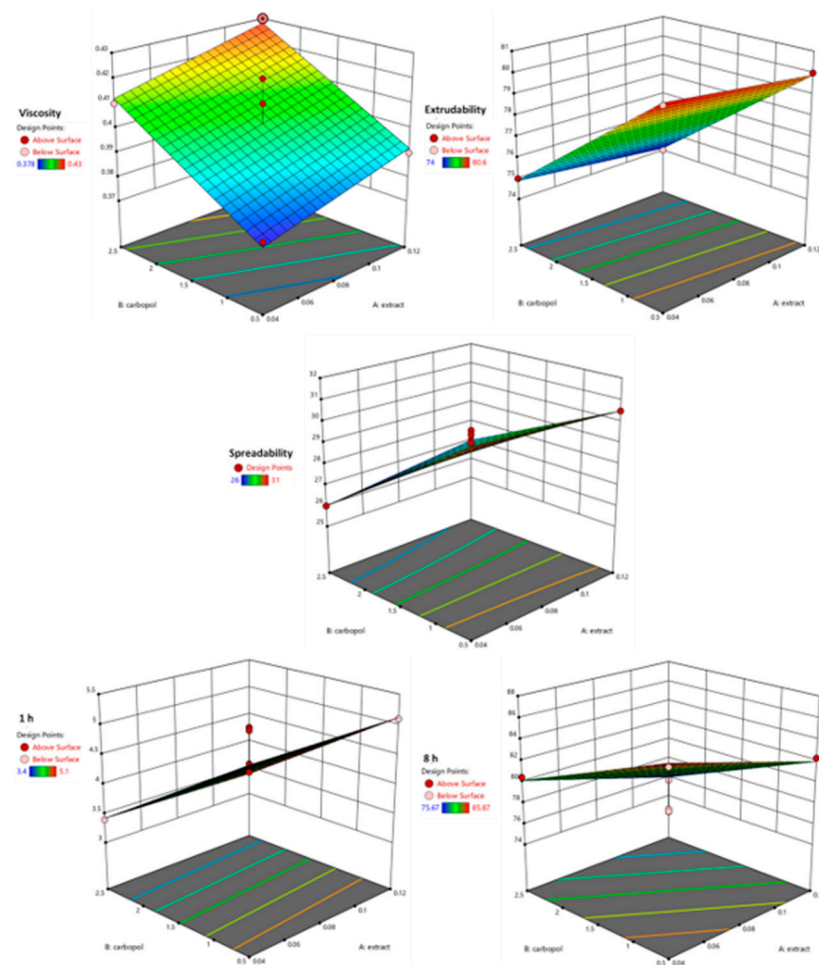


Figure S2. Response surface plot showing the effect of (a) Carbopol; (b) extract on responses—viscosity, extrudability, spreadability, and drug release (1 hr and 8 hrs).

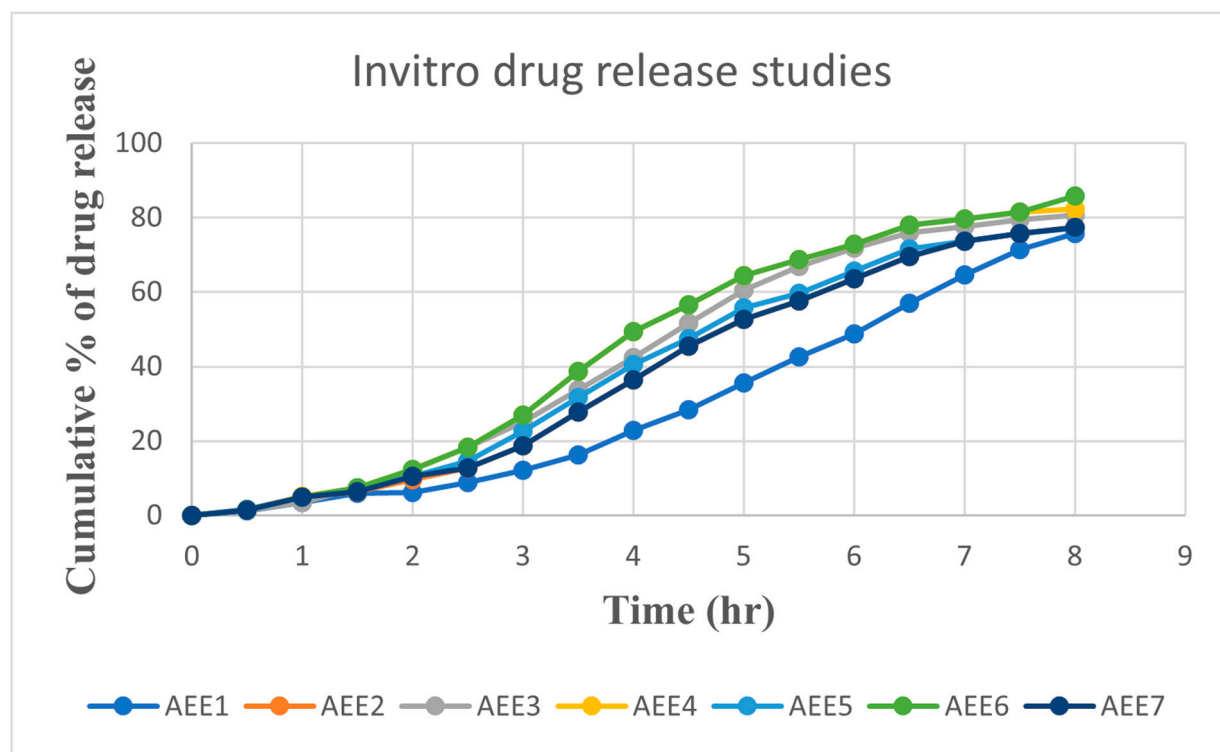


Figure S3. In vitro drug release profile of AEE1–AEE7.

Results

	Size (d.nm):	% Intensity:	St Dev (d.n...
Z-Average (d.nm): 226.0	Peak 1: 254.7	100.0	95.37
Pdl: 0.157	Peak 2: 0.000	0.0	0.000
Intercept: 0.903	Peak 3: 0.000	0.0	0.000
Result quality : Good			

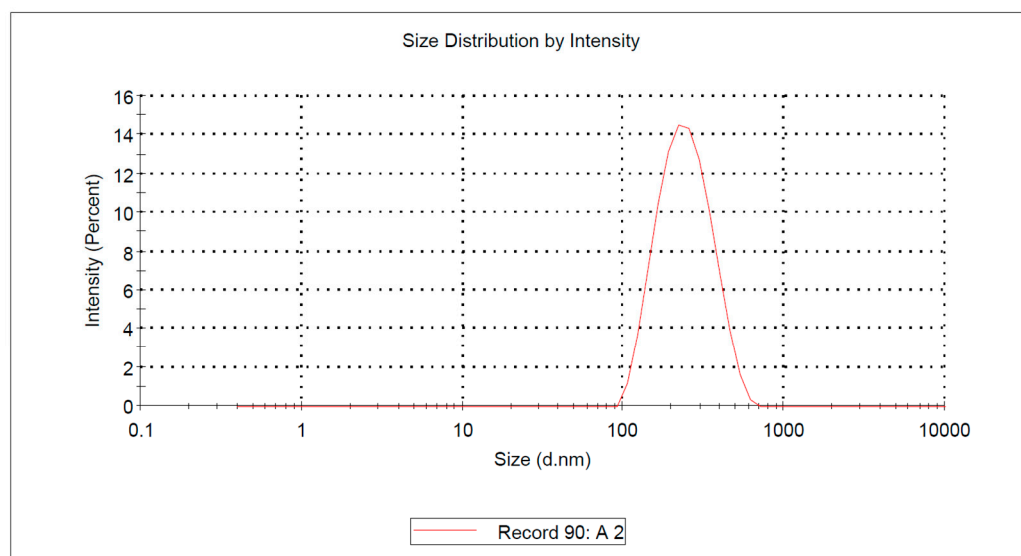


Figure S4. Particle size determination.

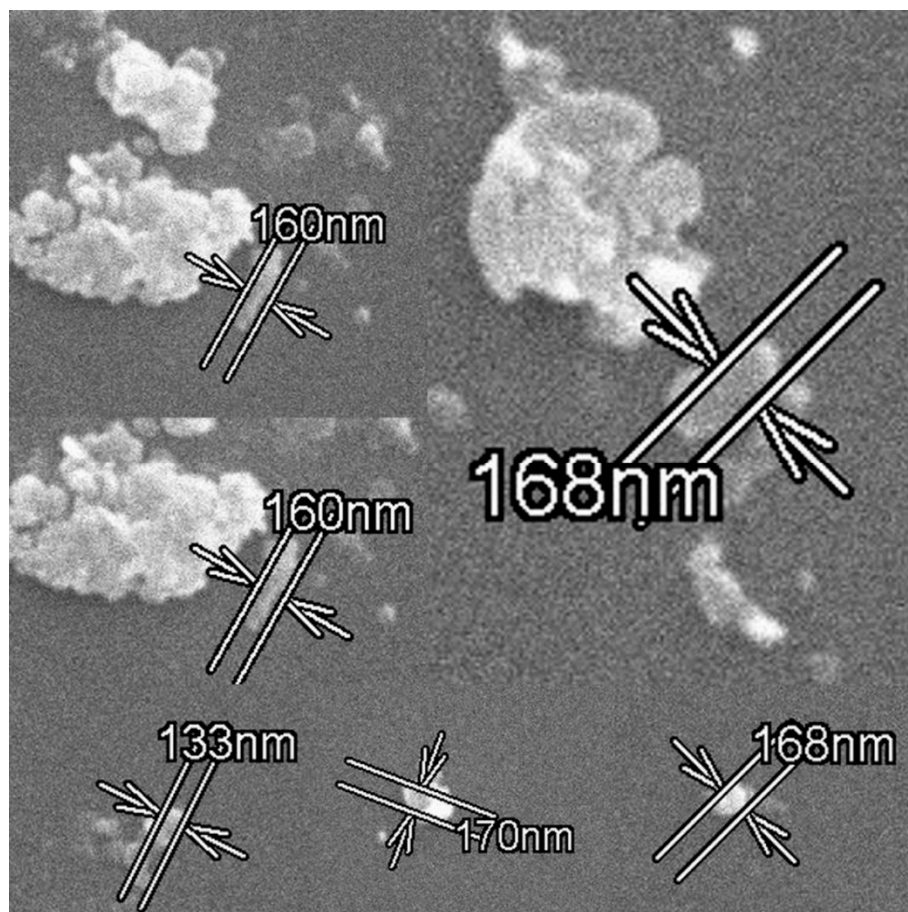


Figure S5. Surface morphology of the optimized emulgel.

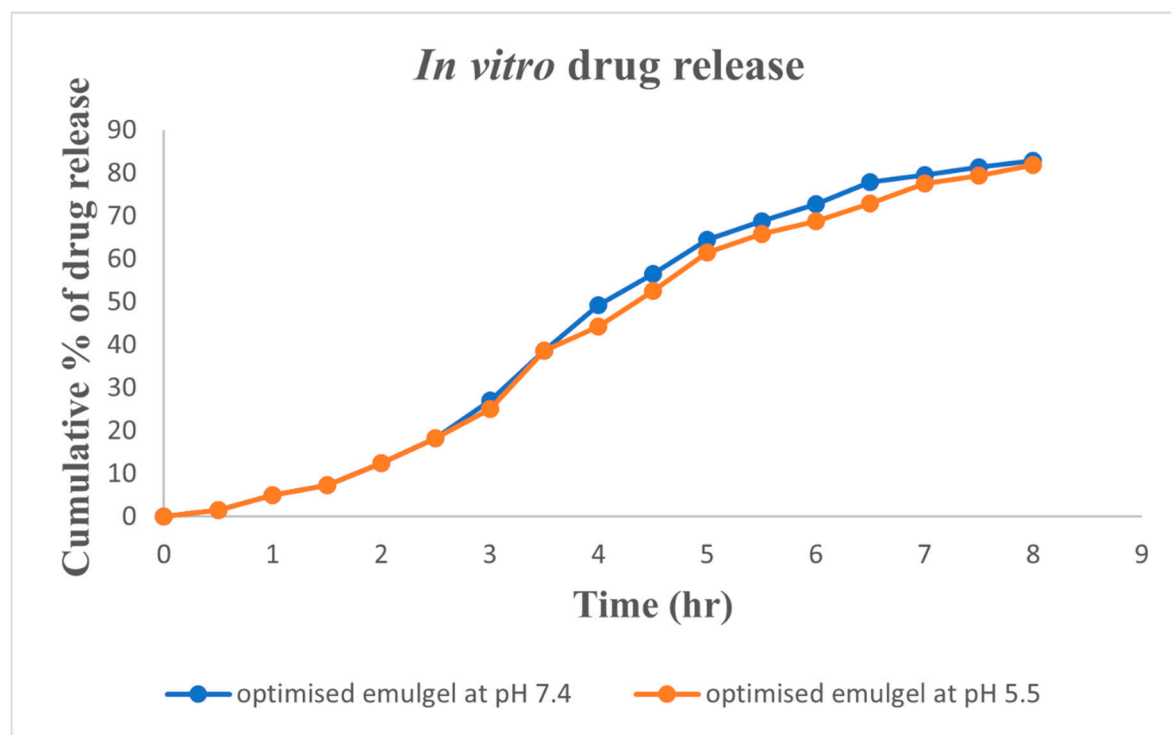


Figure S6. Drug release studies of optimized formulation