

Chitosan grafted poly(ethylene glycol) methyl ether acrylate submicronic pH sensitive hydrogels for drug delivery applications

Corina-Lenuța Savin (Logigan)^{1,2}, Christelle Delaite², Crina Tiron³, Cristian Peptu⁴, Marcel Popa^{1,5,6}, Catalina Anișoara Peptu^{1,*}

1 Department of Natural and Synthetic Polymers, Faculty of Chemical Engineering and Environmental Protection "Cristofor Simionescu", "Gheorghe Asachi" Technical University of Iasi, Romania, savincorina@yahoo.com, marpopa@ch.tuiasi.ro, catipeptu@ch.tuiasi.ro

2 Laboratory of Photochemistry and Macromolecular Engineering Institute J.B. Donnet, University of Haute Alsace, Mulhouse, France, christelle.delaite@uha.fr

3 Regional Institute of Oncology, 2-4, General Henri Mathias Berthelot Street, 700483 Iasi, Romania; crinatiron2003@yahoo.com

4 "Petru Poni" Institute of Macromolecular Chemistry, Aleea Grigore Ghica Voda, 41A, 700487 Iasi, Romania, cristian_peptu@yahoo.com

5 "Apollonia" University of Iasi, Faculty of Medical Dentistry, Muzicii Street, No. 2, Iasi 700511, Romania

6 Academy of Romanian Scientists, Splaiul Independentei Street, No 54, 050094 Bucharest, Romania

* Correspondence: catipeptu@ch.tuiasi.ro (Peptu C.A.)

Contents

1. Characteristic absorption bands of CS, PEGA, CS-PEGA	Table S1	Page 2
2. CPH characteristic absorption bands	Table S2	Page 2
3. TGA analysis of chitosan particulate hydrogels (A8, A9, A10 samples)	Figure S1	Page 2
4. Kinetics of the LEV loading into the ABS from chitosan particulate hydrogels (A8, A9 samples)	Figure S2	Page 3
5. Kinetics of the LEV release efficiency into the PBS from chitosan particulate hydrogels (A8, A9 samples)	Figure S3	Page 4
6. Korsmeyer-Peppas model for A8, 9 samples	Figure S4	Page 5
7. n and k values obtained based on the Korsmeyer-Peppas model (0 – 480 min)	Table S3	Page 5
8. Viability of HDMVEC and MCF-10A cells for submi chitosan particulate hydrogels (sample A9)	Figure S5	Page 5

Table S1. Characteristic absorption bands of CS, PEGA, CS-PEGA

Compound	Wavelength (cm ⁻¹)	Absorption band
Chitosan	1076	Stretching vibrations of -C-O-C
	1379,1423,1659	Specific signals for deformation vibrations of acetylated amine (NHAc) (amide I, -NH ₂ and amide III)
	2879	The vibration of CH groups
	3355	Axial stretching vibrations of OH and NH ₂ groups
PEGA	1105	Stretching vibrations -C-O-C
	1724	The vibration signal corresponding to the C = O bonds
	2874	The vibration of CH groups
	3522	Axial stretching vibrations of OH groups
CS-PEGA	1083	Stretching vibrations -C-O-C
	1379, 1566,1649	Specific signals for deformation vibrations of acetylated amine groups
	1733	The vibration signal corresponding to the C = O bonds
	2880	The vibration of CH groups
	3470	Axial stretching vibrations of secondary amine groups

Table S2. CPH characteristic absorption bands

Compound	Wavelength (cm ⁻¹)	Absorption band
A8		The absorption band signal corresponding to the new bonds formed by the ionic crosslinking process between P ₃ O ₁₀ ⁵⁻ anions from TPP and NH ₃ ⁺ cations from CS-PEGA
	846	
	1074	Characteristic stretching vibrations -C-O-C
	1315	Band-specific bonding signal P = O
	1573	Signals specific to imine linkages -C=N-

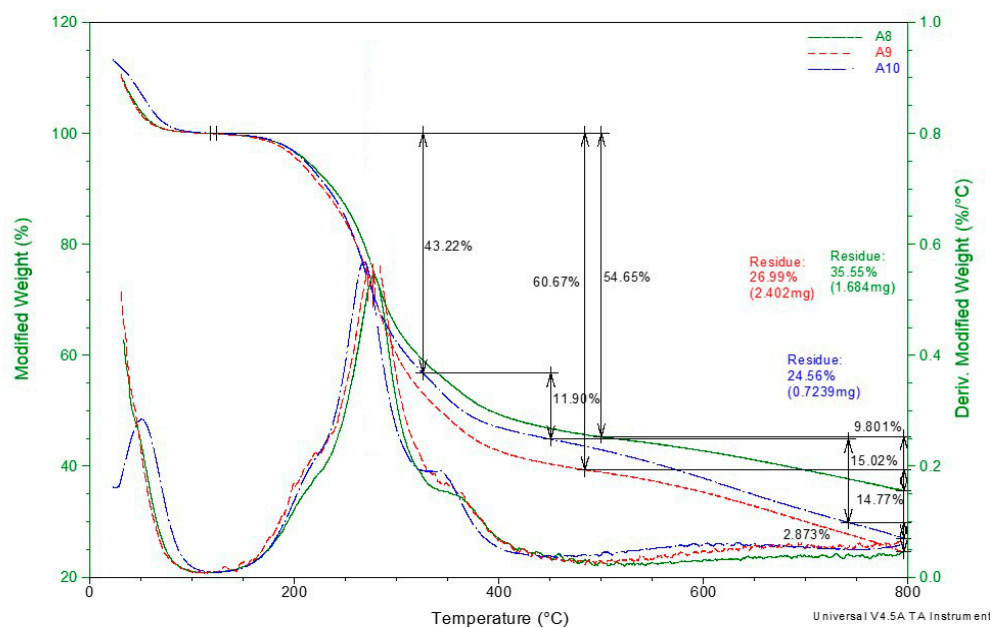


Figure S1. TGA analysis of chitosan particulate hydrogels (A8, A9, A10 samples)

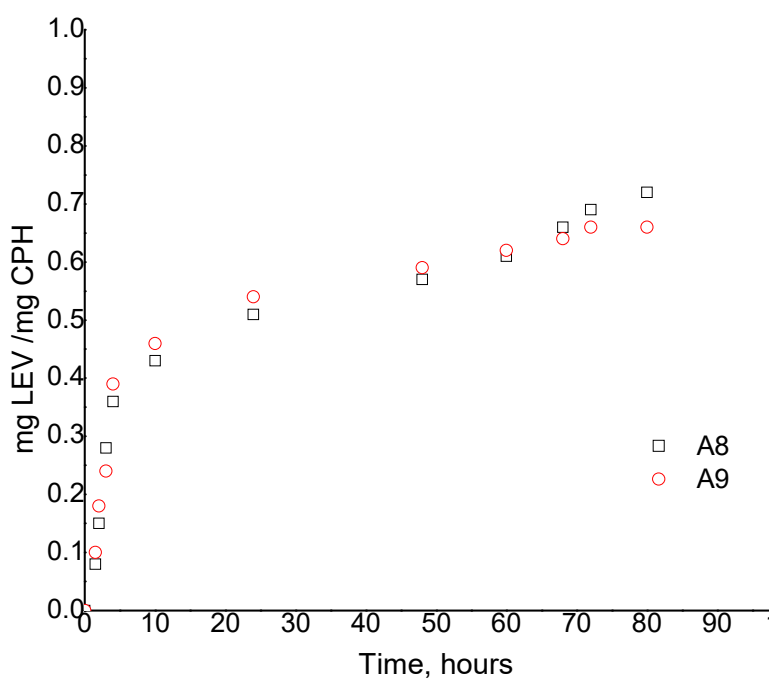


Figure S2. Kinetics of the LEV loading into the ABS from chitosan particulate hydrogels (A8 - A9 samples)

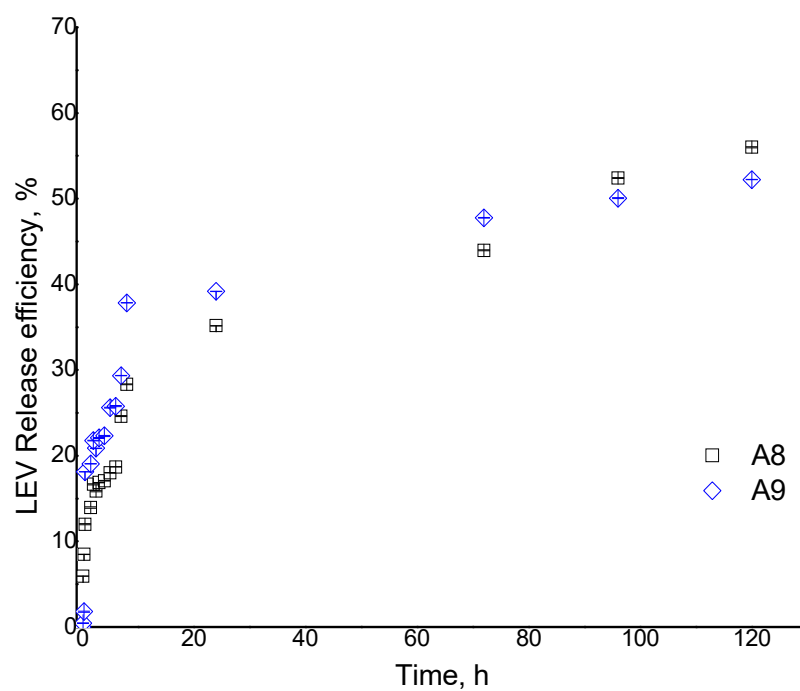
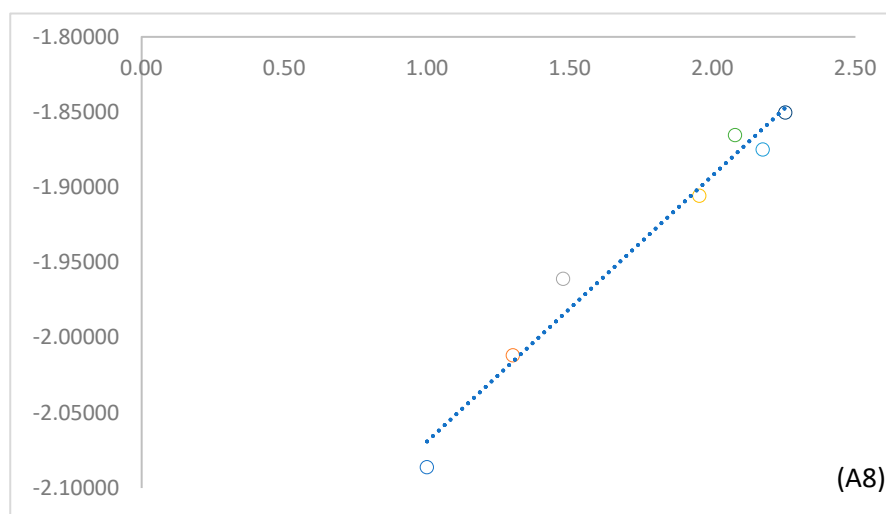


Figure S3. Kinetics of the LEV release efficiency into the PBS from chitosan particulate hydrogels (A8 - A9 samples)



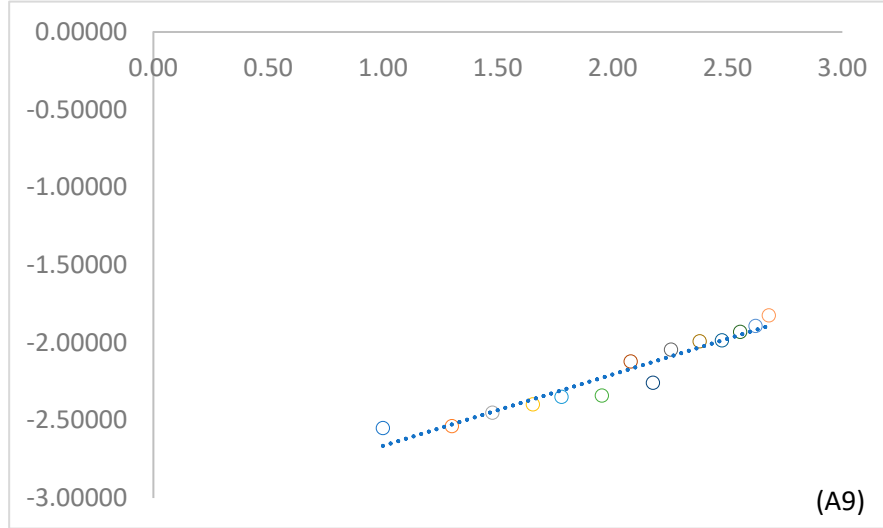


Figure S4. Korsmeyer-Peppas model for samples A8-A9

Table S3. n and k values obtained based on the Korsmeyer-Peppas model (0 – 480 min)

Sample code	Equations	k	n	R^2
A5	$y = 0.4593 \cdot x - 3.1908$	0.1306	0.4593	0.9277
A6	$y = 0.4517 \cdot x - 3.3124$	0.1327	0.4517	0.9664
A7	$y = 0.4018 \cdot x - 3.1908$	0.1726	0.4218	0.9318
A8	$y = 0.4294 \cdot x - 3.351$	0.4214	0.4294	0.9778
A9	$y = 0.4176 \cdot x - 2.2459$	0.2433	0.4176	0.9230
A10	$y = 0.4228 \cdot x - 2.2956$	0.1575	0.4228	0.9314
A11	$y = 0.6035 \cdot x - 31561$	0.0319	0.6035	0.9378

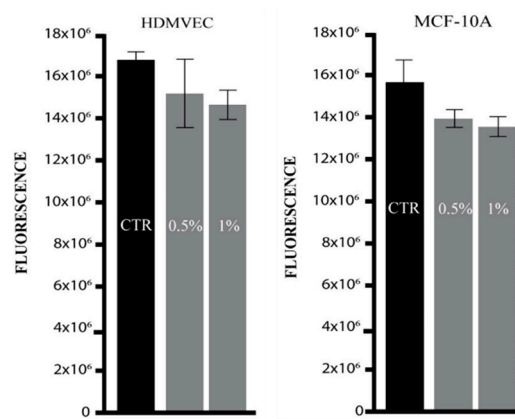


Figure S5. Viability of HDMVEC and MCF-10A cells for chitosan particulate hydrogels (sample A9)