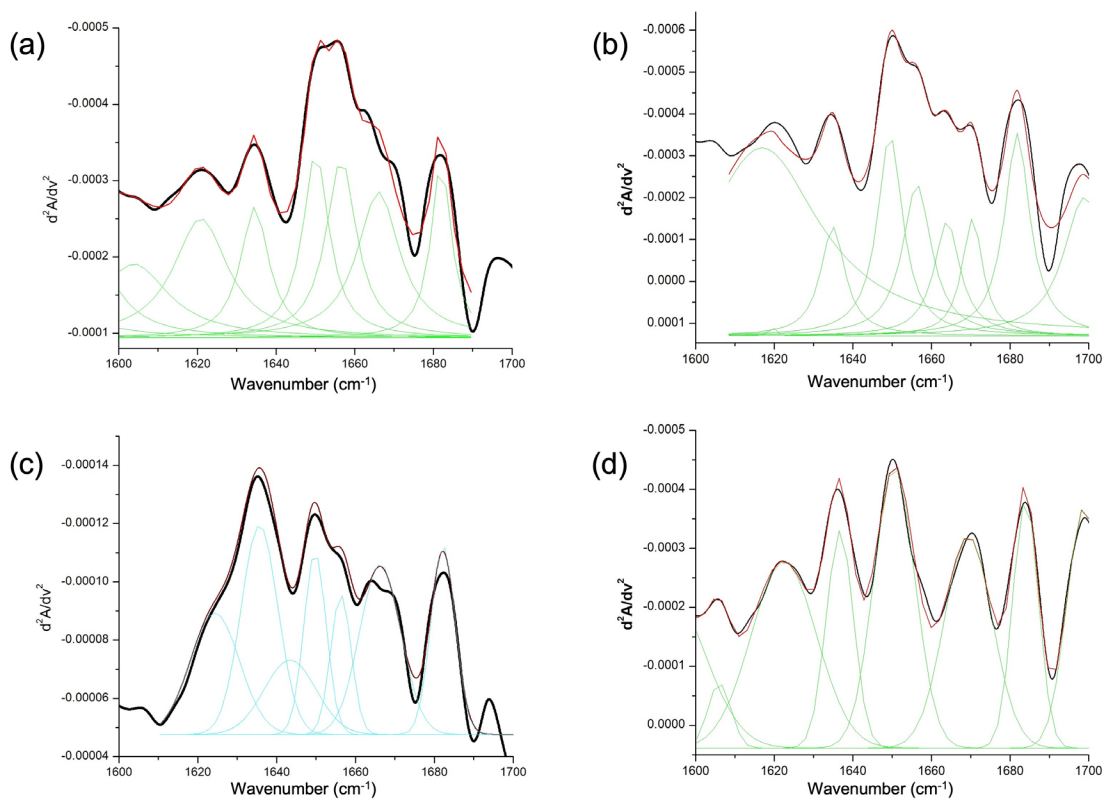


**Figure S1.** SDS-PAGE of protein extracts from tomato seed meals defatted with scCO<sub>2</sub>. Lanes: M, molecular weight marker; 1, Proteins extracted with 1M NaCl; 2, Proteins extracted with water.



**Figure S2.** Deconvoluted FT-IR spectra of protein extracts from tomato seed meals treated with hexane and scCO<sub>2</sub>. a) PEWH, Proteins extracted with water from tomato seed meal

defatted using hexane b) PEWC, Proteins extracted with water from tomato seed meal defatted using supercritical CO<sub>2</sub>; c) PESH, Proteins extracted with 1M NaCl from tomato seed meal defatted using hexane; d) PESC, Proteins extracted with 1M NaCl from tomato seed meal defatted using supercritical CO<sub>2</sub>.