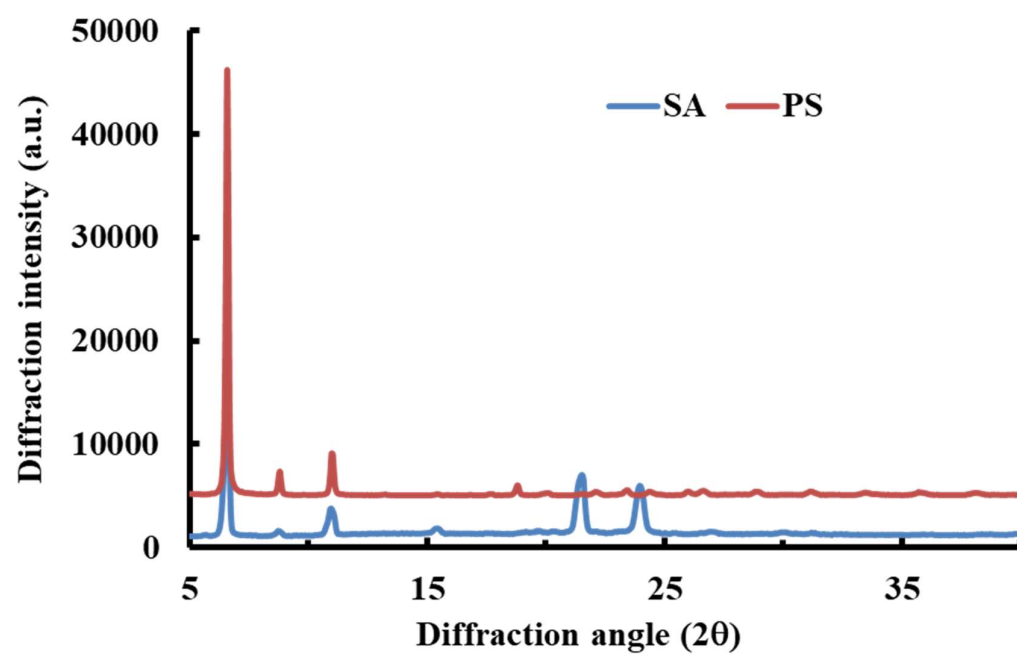


## Supplementary material

Figure S1. X-ray diffraction patterns of stearic acid (SA) and potassium stearate (PS).



**Figure S2.** Enlarged FTIR spectra of HAS (control) and HAS-SAs (a), and HAS-PSs (b) at the range of 1200~800  $\text{cm}^{-1}$ . The HAS-SAs/PSs were prepared from the dispersions containing 2.0 % (w/v) high amylose starch (HAS) with stearic acid (SA) or potassium stearate (PS) at molar concentrations of 0.5~2.0 mM.

