

Supplementary Materials

Table S1. Identified amygdalin by HPLC-ESI-TOF-MS in apple pomace with seed extracts.

Peak	Rt (min)	Observed <i>m/z</i>	Calculated <i>m/z</i>	Error (ppm)	Score (%)	Molecular formula	In source <i>m/z</i> fragments	Compound name
1	3.47	456.1504	456.1506	-0.4	94.30	C ₂₀ H ₂₆ NO ₁₁	323.0913	Amygdalin

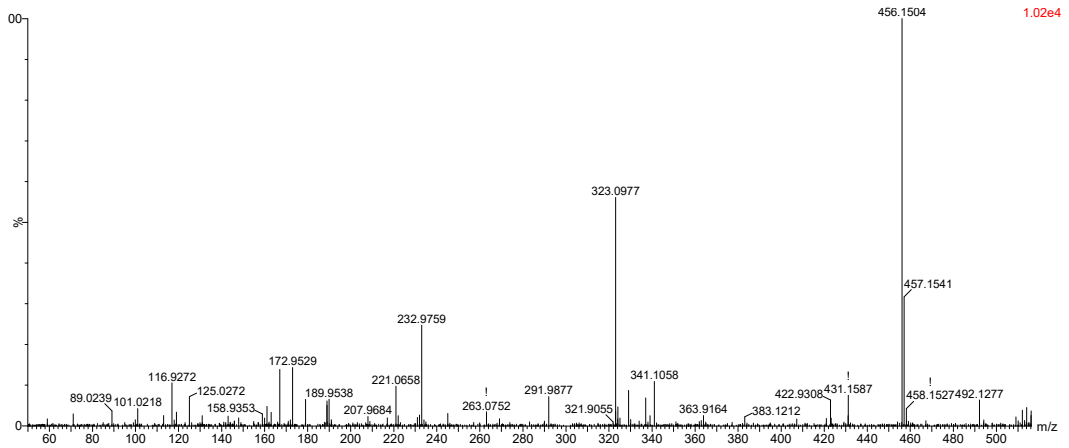


Figure S1. Negative mode product ion spectrum of amygdalin (465 m/z).

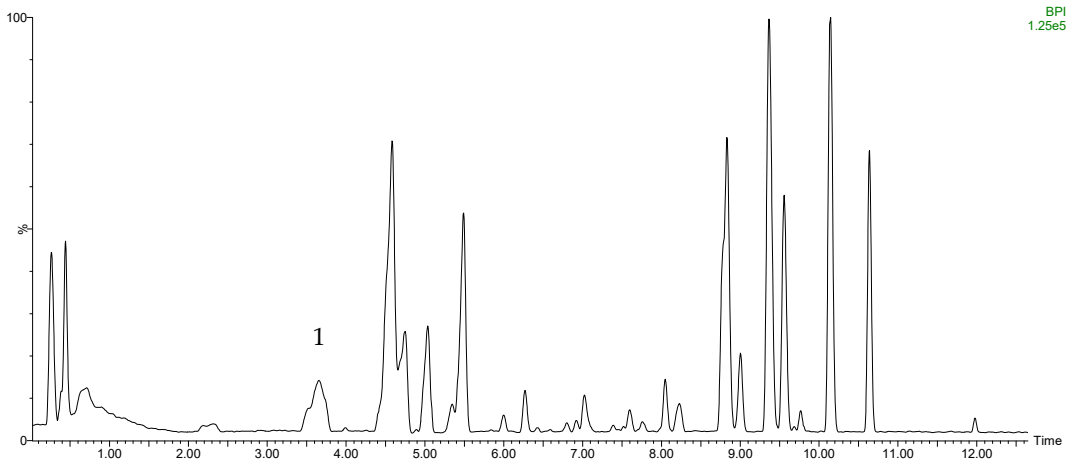


Figure S2. HPLC-TOF-MS chromatogram of apple pomace with seed extracts. 1: Amygdalin.

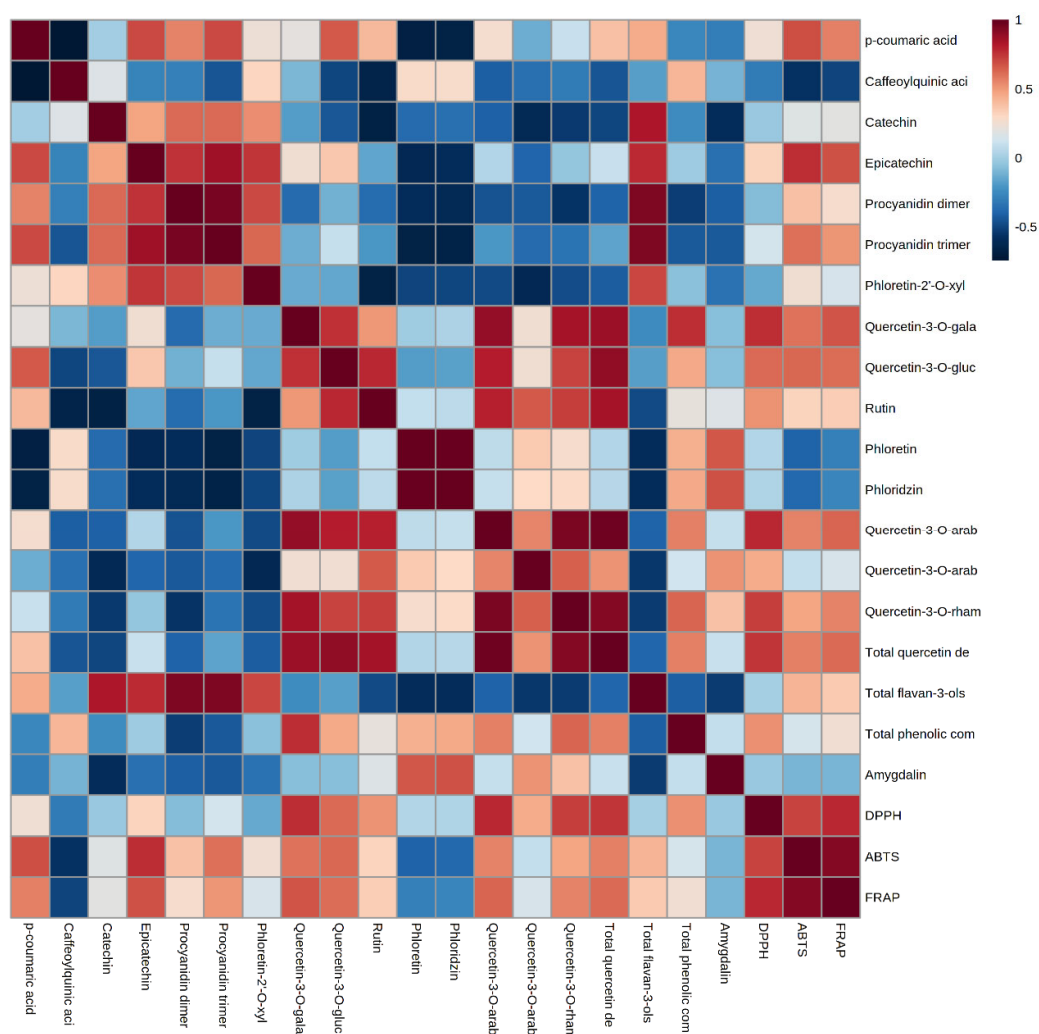


Figure S3. Pearson's correlation heatmap for all the analyses performed in the different varieties of apple pomace analyzed with and without seed. .