

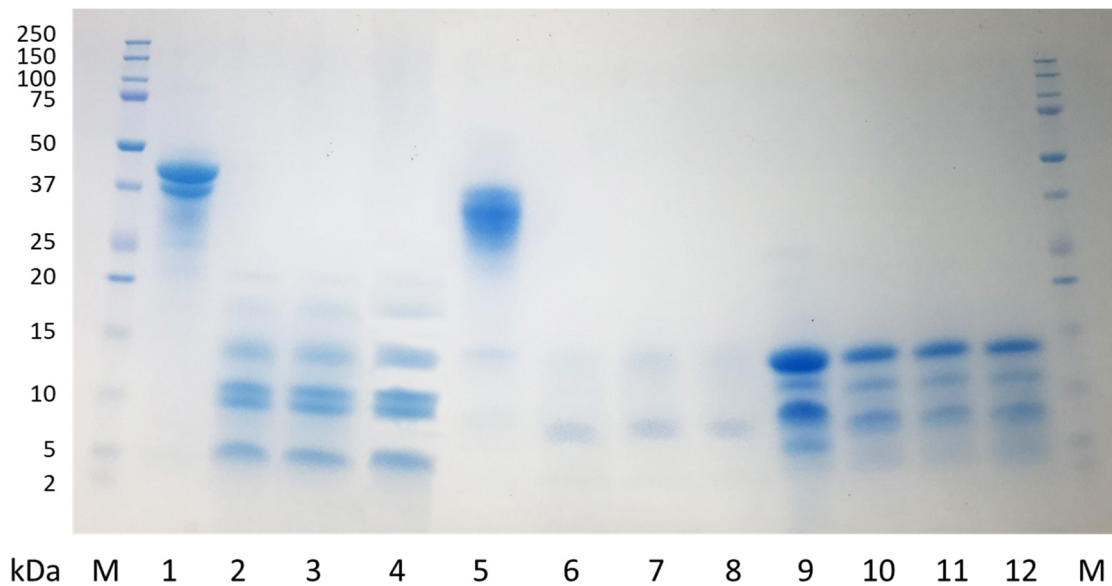
Supplementary Table S1. Primer pair sequences and conditions used for the analyses of gene expression.

Gene	Primer pairs	Reference	Cycling conditions
<i>Gadph</i>	<i>fw</i> 5' GAAGGTGAAGGTCGAGTCAA 3' <i>rv</i> 5' ACGTACTCAGCGCCAGCATC 3'	This work	<i>Pre-Incubation:</i> 2 min 50 °C <i>Incubation:</i> 10 min 95 °C 40 cycles: <i>Denaturation:</i> 15 s 95 °C <i>Annealing/Extension:</i> 45 s 62 °C
<i>Il33</i>	<i>fw</i> 5' GAGCTAAGGCCACTGAGGAA 3' <i>rv</i> 5' TGGGCCTTTGAAGTTCCATA 3'	[1]	
<i>Il25</i>	<i>fw</i> 5' CCAGGTGGTTGCATTCTTGG 3' <i>rv</i> 5' TGGCTGTAGGTGTGGGTTCC 3'	[2]	
<i>Tslp</i>	<i>fw</i> 5' CTCTGGAGCATCAGGGAGAC 3' <i>rv</i> 5' CAATCCACCCAGTTTCAC 3'	This work	
<i>Il6</i>	<i>fw</i> 5' TTCGGTCCAGTTGCCTTCTC 3' <i>rv</i> 5' GAGGTGAGTGGCTGTCTGTG 3'	[3]	<i>Pre-Incubation:</i> 2 min 50 °C <i>Incubation:</i> 5 min 95 °C 40 cycles: <i>Denaturation:</i> 15 s 95 °C <i>Annealing/Extension:</i> 45 s 58 °C + 15 s 60 °C
<i>Il8</i>	<i>fw</i> 5' AAGAAACCACCGGAAGGAAC 3' <i>rv</i> 5' ACTCCTTGGCAAACTGCAC 3'	[4]	<i>Pre-Incubation:</i> 2 min 50 °C <i>Incubation:</i> 10 min 95 °C 40 cycles: <i>Denaturation:</i> 15 s 95 °C <i>Annealing/Extension:</i> 45 s 62 °C

fw, forward; *rv*, reverse

References

1. Tordesillas, L.; Goswami, R.; Benedé, S.; Grishina, G.; Dunkin, D.; Jarvinen, M.J.; Maleki, S.J.; Sampson, H.; Berin, M.C. Skin exposure promotes a Th2-dependent sensitization to peanut allergens. *J. Clin. Investig.* **2014**, *124*, 4965-4975.
2. Wang, Y.H.; Angkasekwinai, P.; Lu, N.; Voo, K.S.; Arima, K.; Hanabuchi, S.; Hippe, A.; Corrigan, C.J.; Dong, C.; Homey, B.; Yao, Z.; Ying, S.; Huston, D.P.; Liu, Y.J. IL-25 augments type 2 immune responses by enhancing the expansion and functions of TSLP-DC-activated th2 memory cells. *J. Exp. Med.* **2007**, *204*, 1837-1847.
3. Bunn, R.C.; Cockrell, G.E.; Ou, Y.; Thrailkill, K.M.; Lumpkin Jr, C.K.; Fowlkes, J.L. Palmitate and insulin synergistically induce IL-6 expression in human monocytes. *Cardiovasc. Diabetol.* **2010**, *9*, 73.
4. Townsend, D.M.; Lin-He, Y.M.; Xiong, Y.; Bowers, R.R.; Hutchens, S.; Tew, K.D. Nitrosative stress-induced S-glutathionylation of protein disulfide isomerase leads to activation of the unfolded protein response. *Cancer Res.* **2009**, *19*, 7626-7634.



Supplementary Figure S1. SDS-PAGE patterns of OVA, OM, and LYS after in vitro gastroduodenal digestions. Electrophoresis was performed using Bis-Tris 12% acrylamide gel with reducing agents. Lanes: M, molecular mass marker (Bio Rad), ranging in molecular mass from 2 to 250 kDa; 1, OVA; 2, OVA digested; 3, OVA digested after treatment at 65 °C for 30 min; 4, OVA digested after treatment at 90 °C for 3 min; 5, OM; 6, OM digested; 7, OM digested after treatment at 65 °C for 30 min; 8, OM digested after treatment at 90 °C for 3 min; 9, LYS; 10, LYS digested; 11, LYS digested after treatment at 65 °C for 30 min; 12, LYS digested after treatment at 90 °C for 3 min.