

Supplementary material

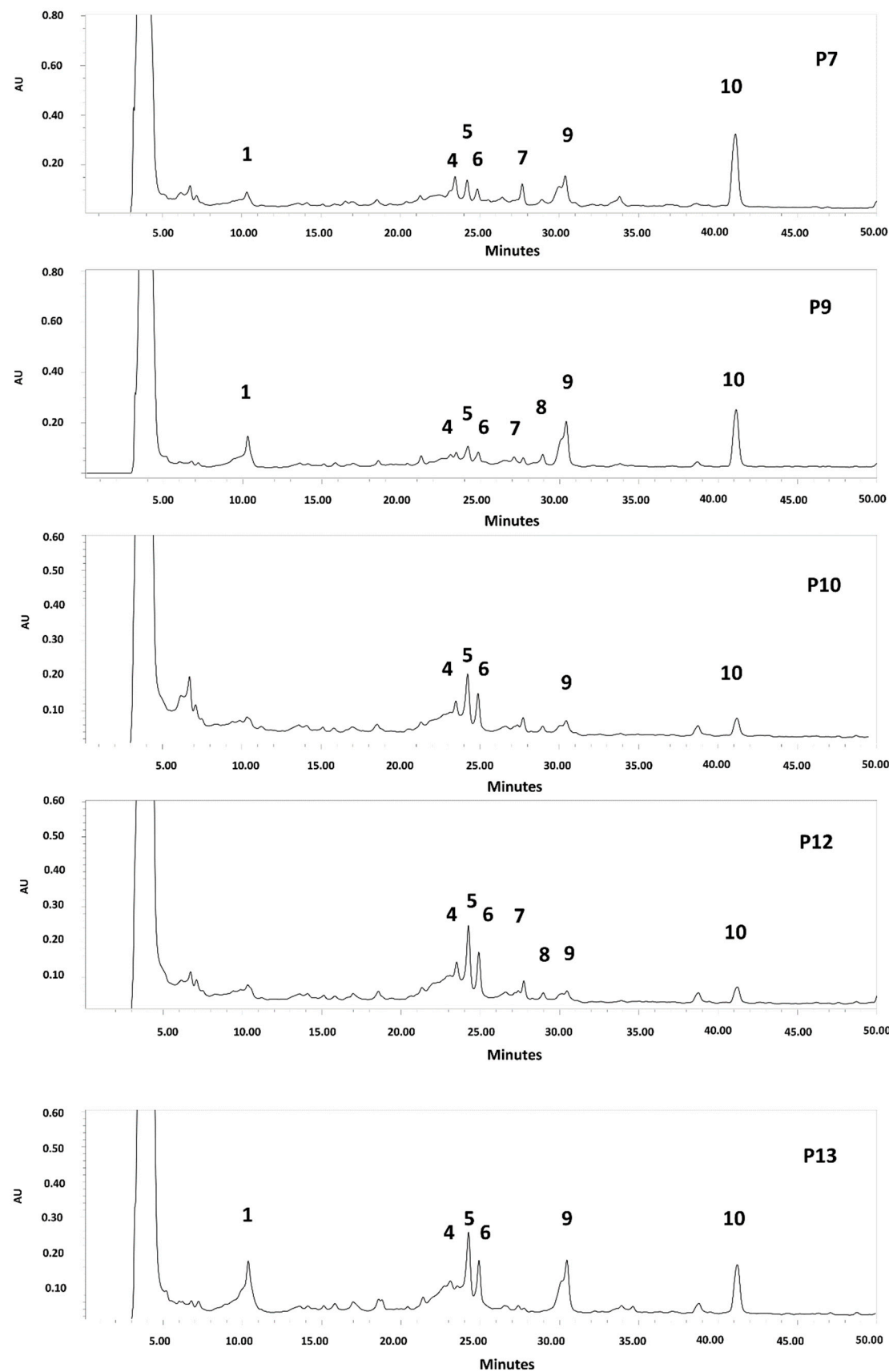


Figure S1. HPLC chromatogram of polyphenols from *P. alba* seed flour (Clones P7–P13). Detection: UV₂₅₄ nm. Compounds: 1: isoschaftoside hexoside; 2: schaftoside hexoside; 3: Vicenin II (Apigenin-di-C-hexoside)/Isomer; 4: Vicenin II/Isomer; 5: Isoschaftoside (Apigenin-C-hexoside-C-pentoside); 6: Schaftoside; 7: unknown 8: Vitexin; 9: Isovitexin; 10: unknown.