

Figure S1. Plots (mean  $\pm$  standard deviation) of each class for MSI and FTIR data; class A (●), class B (●), and class C (●).

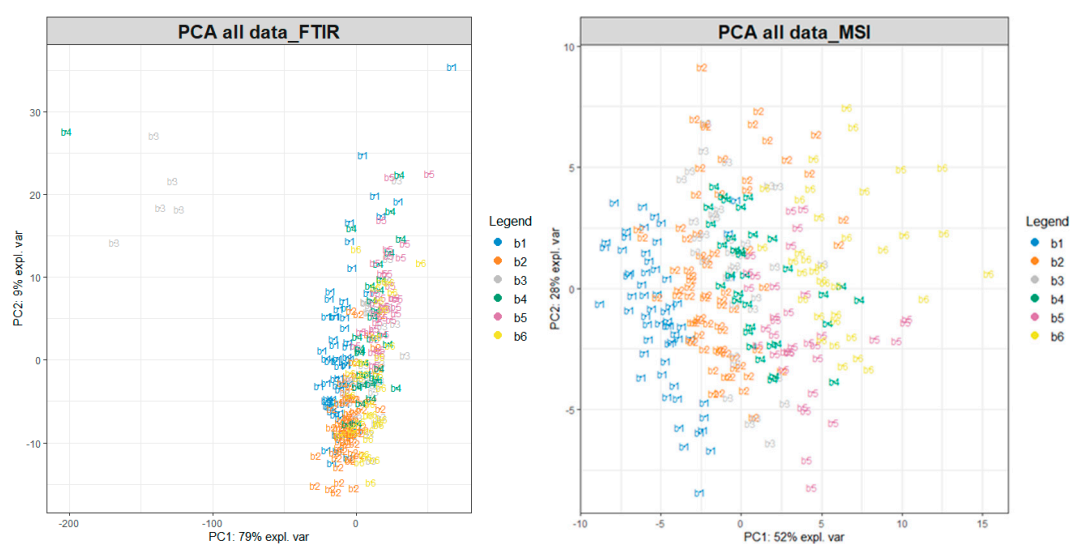


Figure S2. Principal component analysis for all data from batches: b1, b2, b3, b4, b5 and b6 for FTIR and MSI data. Scores plots for PC1 and PC2.

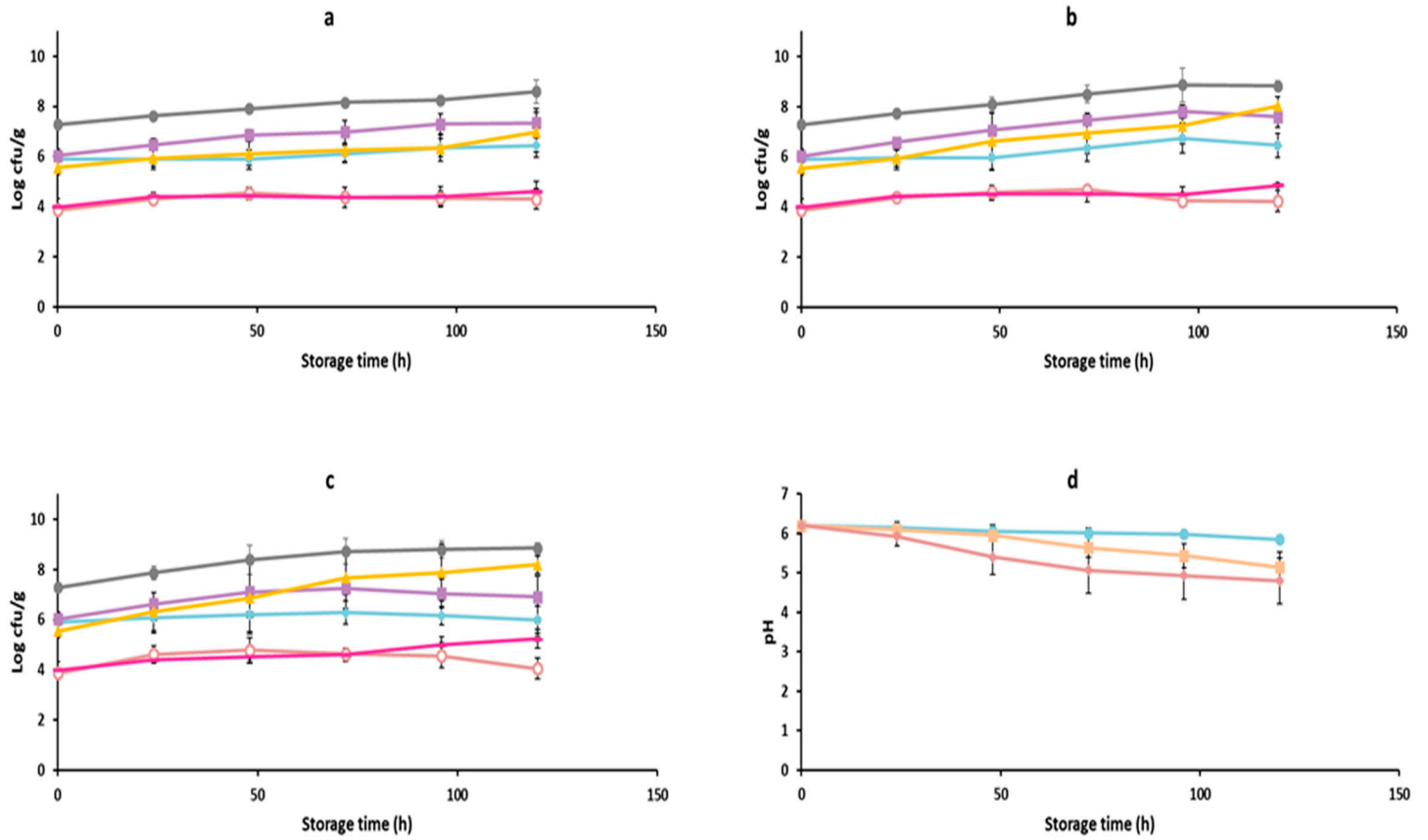


Figure S3. Populations (mean  $\pm$  standard deviation) of microbial groups of chicken burger during storage at 0°C (a), 4°C (b) and 8°C (c) for b4-b6; TVC (●), *B. thermosphacta* (■), *Pseudomonas* spp. (♦), LAB (▲), Yeasts (–) and Enterobacteriaceae (o). pH values (d) of 0°C (●), 4°C (■) and 8°C (♦) (year: 2020).