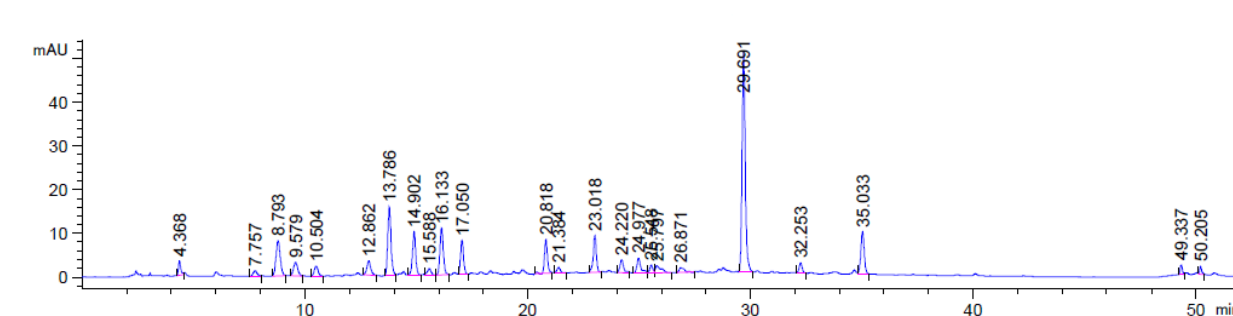


## Supplementary Materials



**Figure S1.** HPLC chromatogram (recorded at 320 nm) of investigated ground ivy extract

**Table S1.** Retention time and wavelength ( $\lambda$ ) of detection of rosmarinic acid

Phenolic compound	Retention time	$\lambda_{\text{max}}$
Rosmarinic acid	29.6 min	320 nm