

Table S1. Accuracy of OPLS-DA models for milk discrimination between provinces and within the same provinces

Chemical techniques	Four regions	Within the province			
		HB	NMG	SX	NX
FA	94.17%	93.33%	100%	100%	93.33%
ISO	29.17%	100%	90.33%	90%	73.33%
ME	24.17%	83.33%	83.33%	93.33%	93.33%
ME/ISO	27.50%	100%	96.67%	93.33%	90.00%
FA/ISO	96.67%	100%	100%	100%	90.33%
FA/ME	95.83%	100%	100%	93.33%	100%
FA/ME/ISO	97.50%	100%	100%	93.33%	100%

FA = Fatty acid; ISO =Isotope; ME = Mineral elements

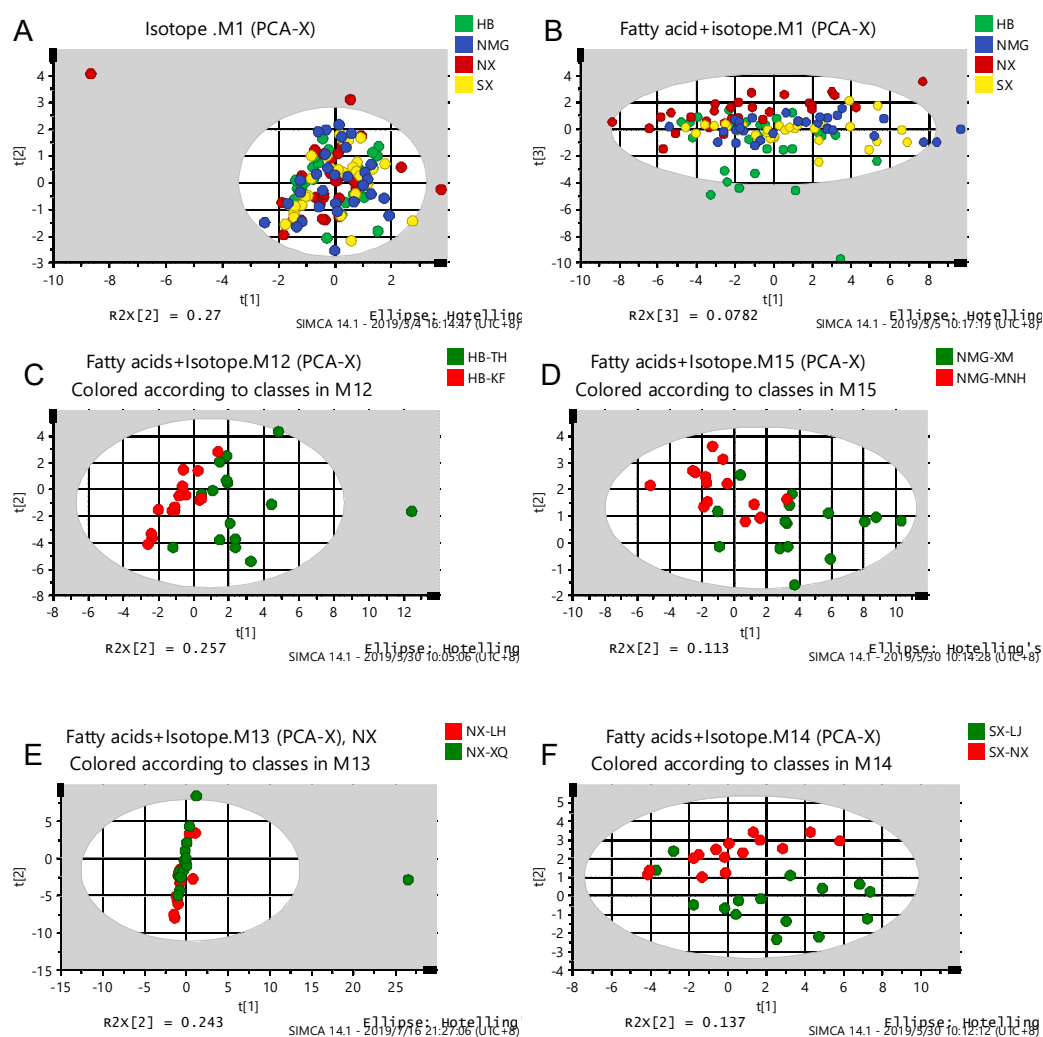


Figure S1. PCA score plots for each technical model: (A/B) Isotope model and isotope-binding fatty acid model for interprovincial samples; (C/D/E/F) Isotope-bound fatty acid models of provincial samples