

Supplementary Information

Host Habitat as a Dominant Role in Shaping the Gut Microbiota of Wild Crucian Carp (*Carassius auratus*)

Xinghao Li ¹, Xueli Huang ¹, Liya Zhao ¹, Wei Cai ¹, Yuhe Yu ² and Jin Zhang ^{1,*}

- ¹ Hubei Key Laboratory of Regional Development and Environmental Response, Hubei University, Wuhan 430062, China; lixhao@hubu.edu.cn (X.L.); huangxl@stu.hubu.edu.cn (X.H.); zhaoly0128@hubu.edu.cn (L.Z.); 20190161@hubu.edu.cn (W.C.)
² Institute of Hydrobiology, Chinese Academy of Sciences, Wuhan 430072, China; yhyu@ihb.ac.cn
* Correspondence: 20150013@hubu.edu.cn

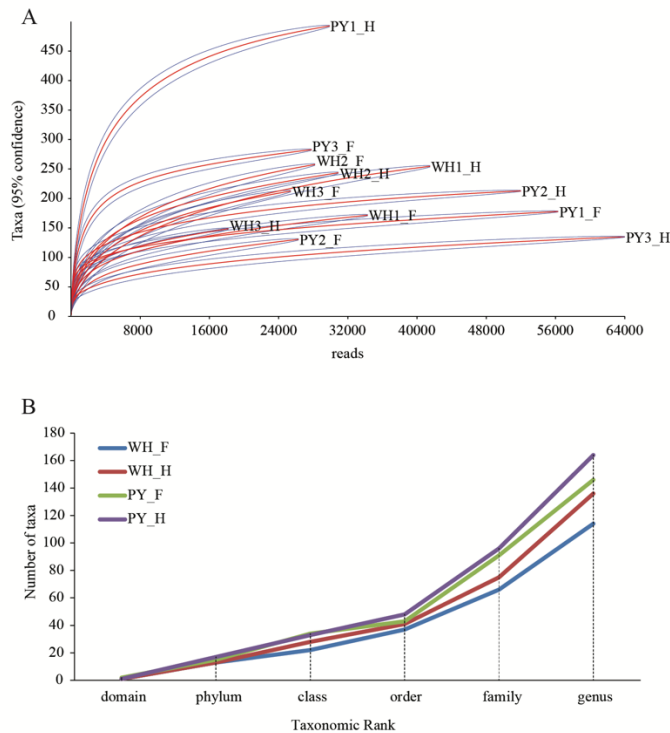


Figure S1 Microbial complexity based on rarefaction curves and taxonomic assignment results of the pooled sequences. (A) Rarefaction curves of 16S rRNA gene sequences of each sample. Sequences are binned into OTUs using a pairwise sequence similarity threshold of 97%. (B) Number of taxa in the foregut and hindgut samples of WH and PY. PY and WH stand for Poyang Lake and Wuhu Lake. F and H stand for foregut and hindgut sample.