

Appendix Tables and Figures

Table S1. Goodness of fitting in JABBA and JABBA-Select of Chub mackerel in the Northwest Pacific

	JABBA	JS1	JS2	JS3	JS4	JS5
RMSE%	26.4	29.1	28.8	28.5	28.5	29.1
DIC	31	48.6	49.4	49.2	49.8	48.7

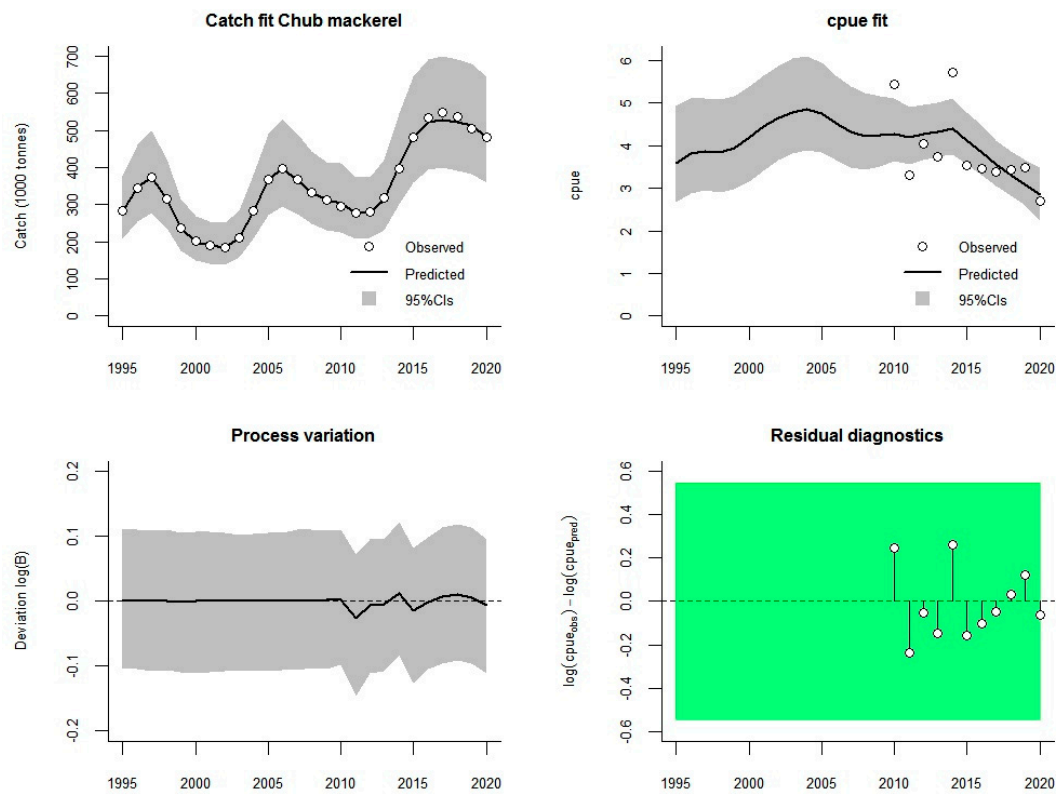


Figure S1 Goodness of fitting in BSM of Chub mackerel in the Northwest Pacific.

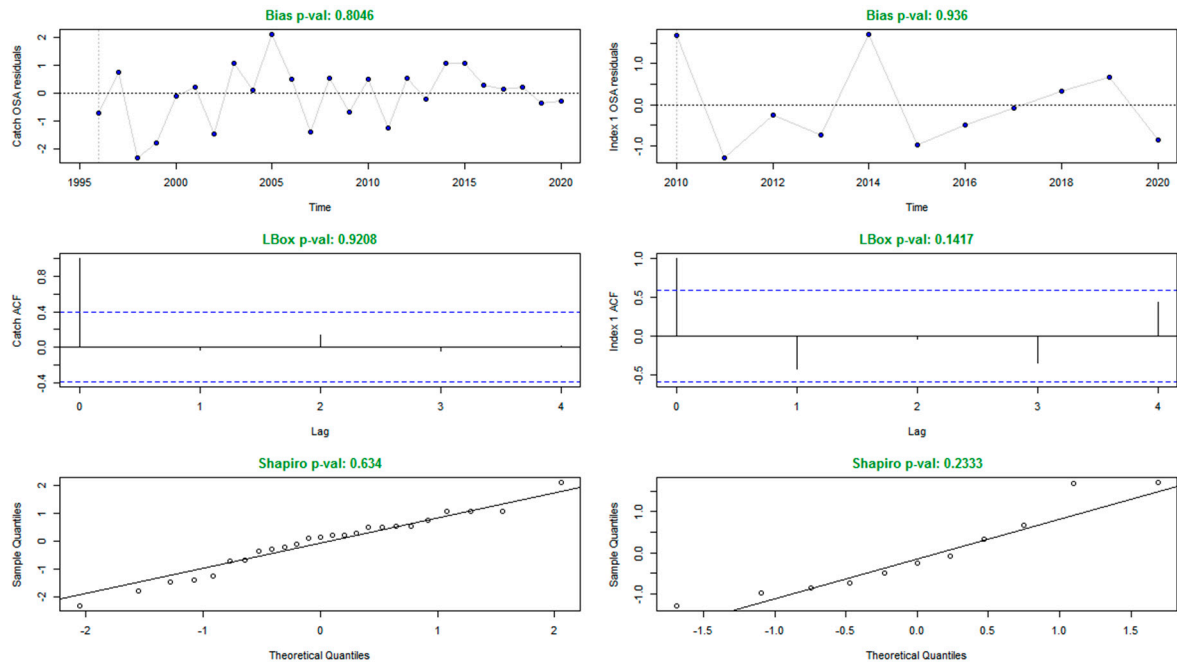


Figure S2 Goodness of fitting in SPiCT of Chub mackerel in the Northwest Pacific.

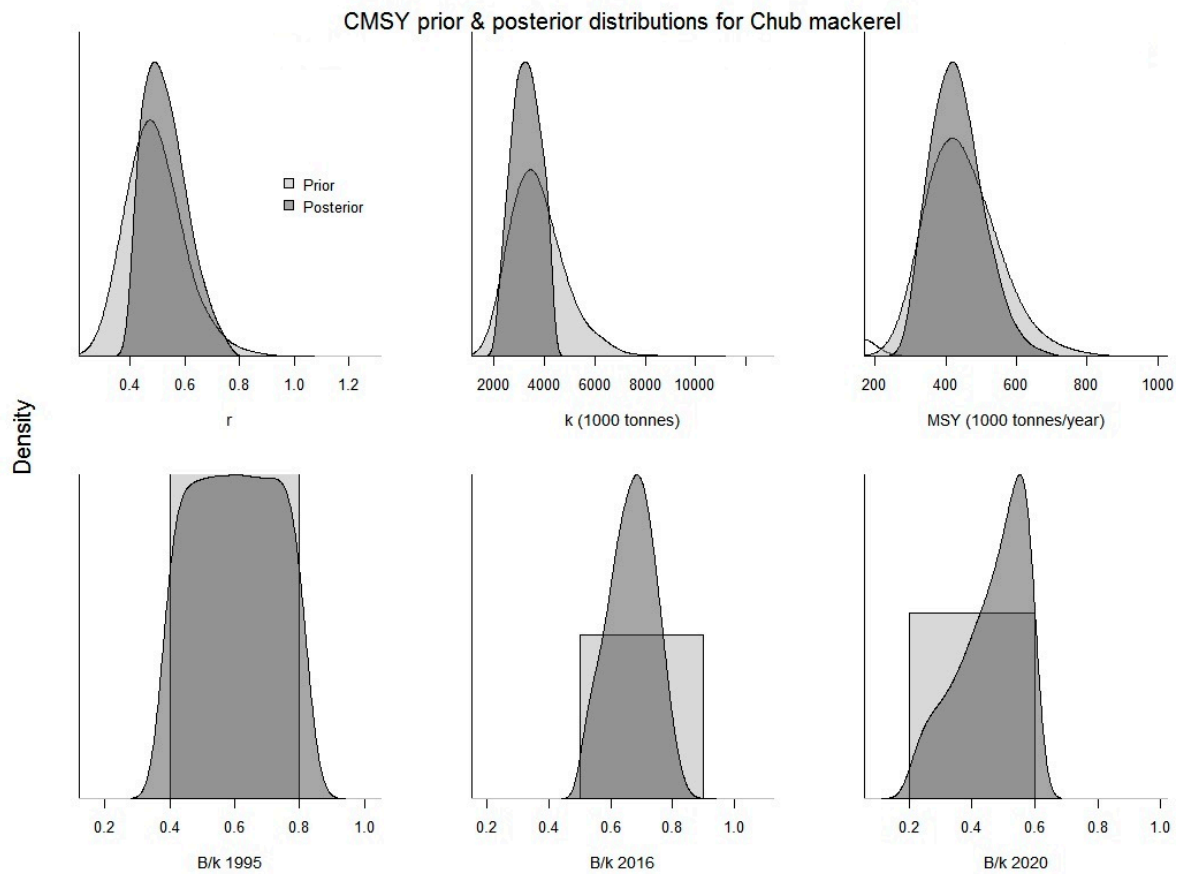


Figure S3 Priors (light) and posteriors (dark) of parameters of base case in CMSY for Chub mackerel in the Northwest Pacific

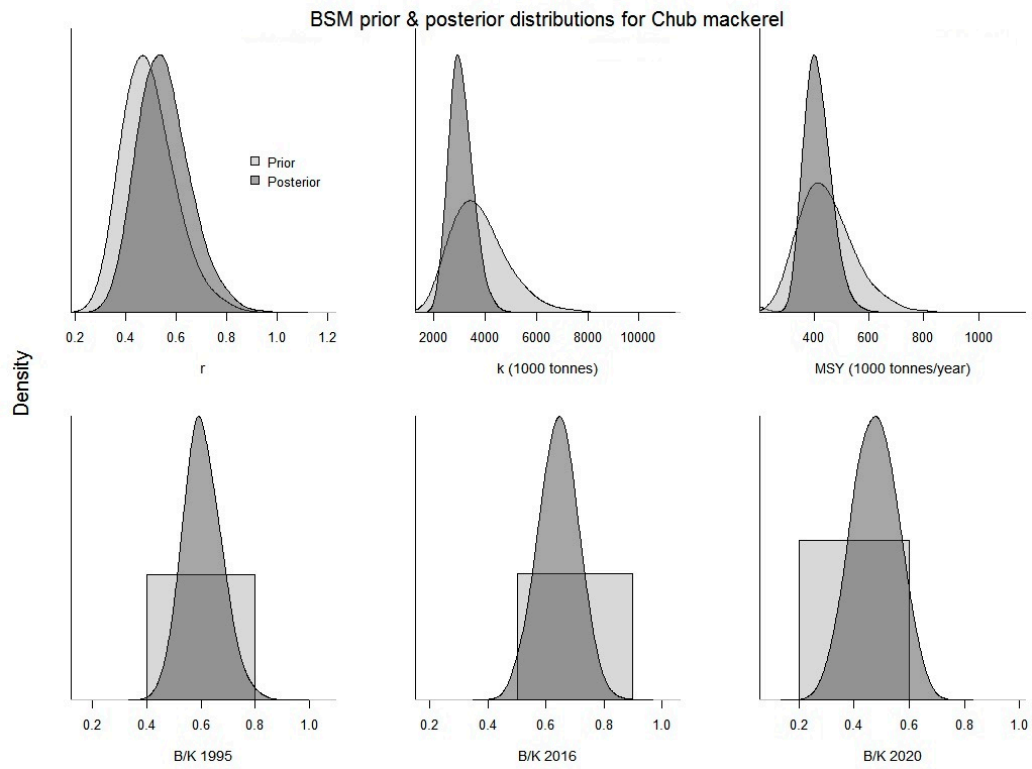


Figure S4 Priors (light) and posteriors (dark) of parameters of base case in BSM for Chub mackerel in the Northwest Pacific.

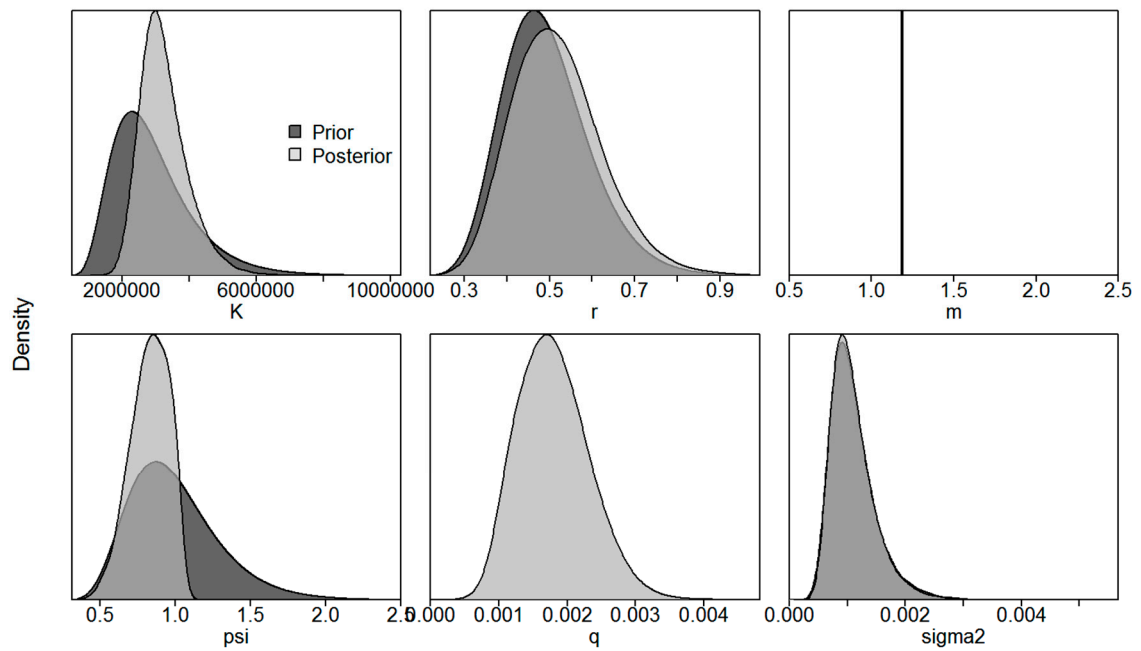


Figure S5 Priors (dark) and posteriors (light) of parameters in JABBA for Chub mackerel in the Northwest Pacific.

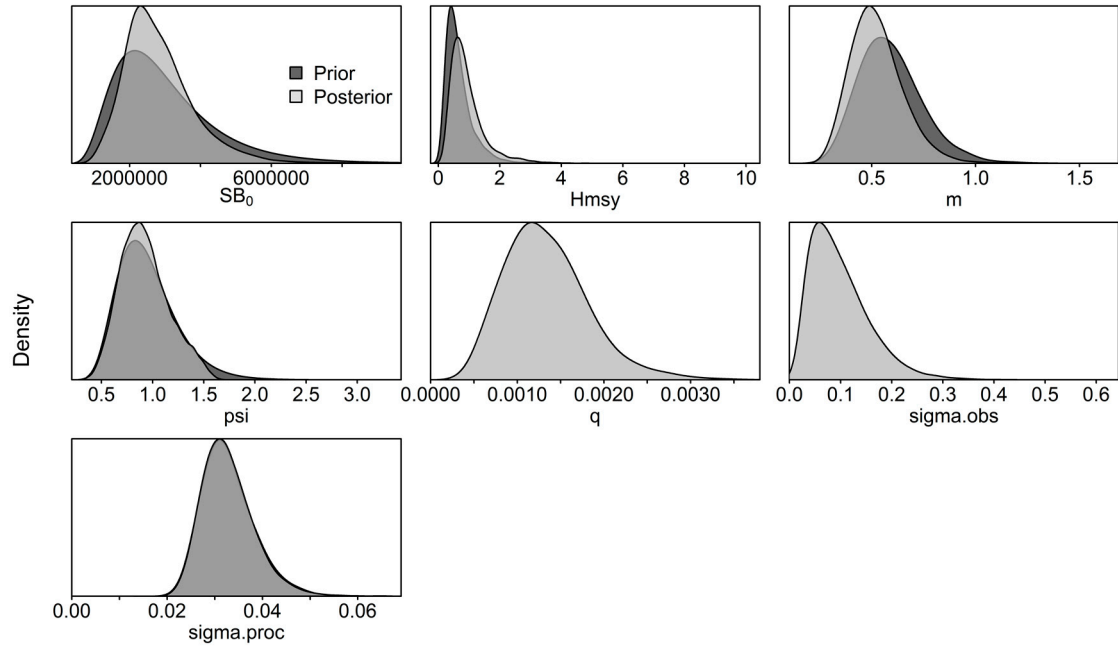


Figure S6 Priors (dark) and posteriors (light) of parameters of base case in JABBA-Select for Chub mackerel in the Northwest Pacific.

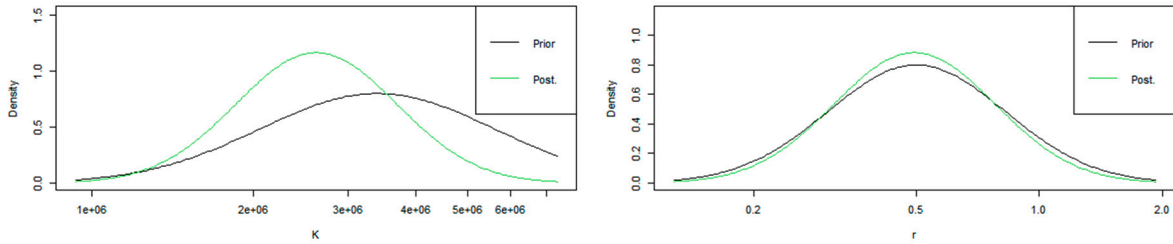


Figure S7 Priors and posteriors of parameters of base case in SPiCT for Chub mackerel in the Northwest Pacific.