

Supplementary materials

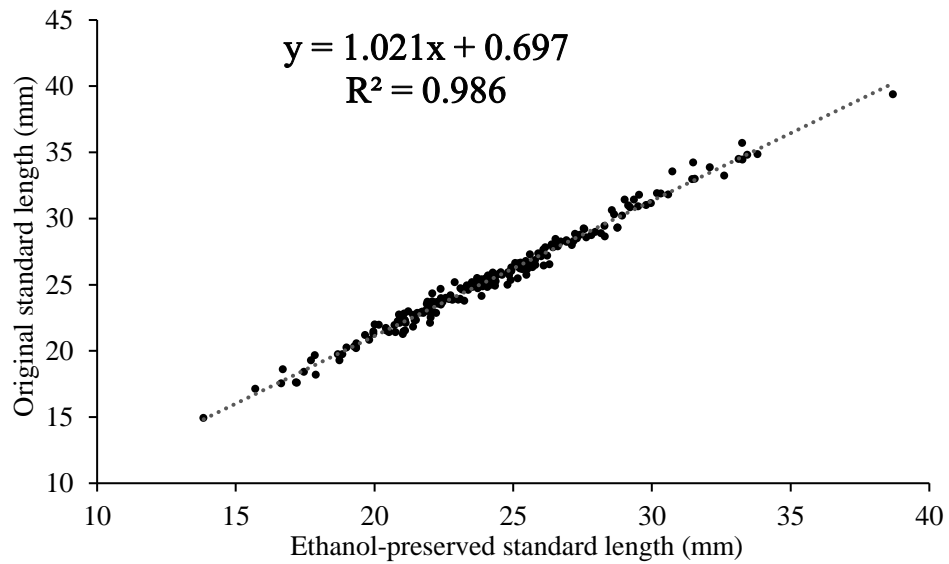


Figure S1. Relationship between original standard length and ethanol-preserved standard length.

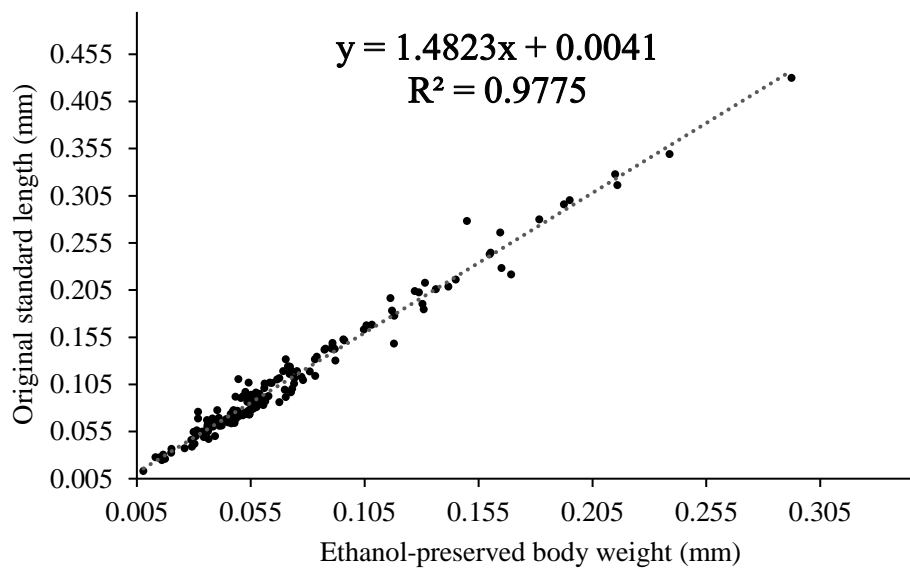


Figure S2. Relationship between original body weight and ethanol-preserved body weight.

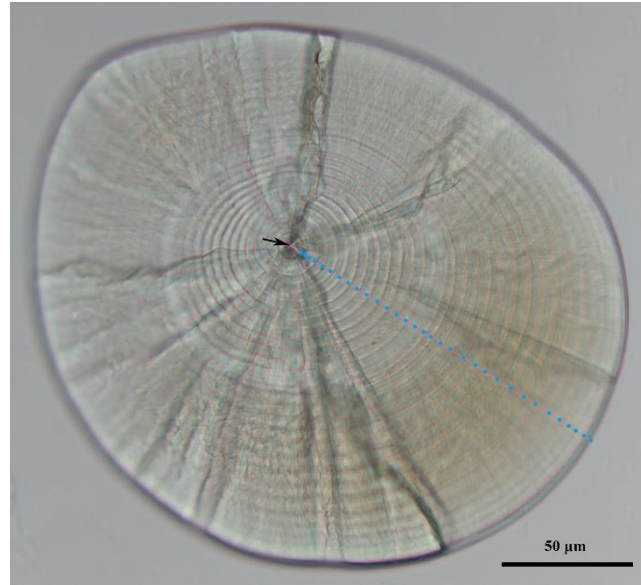


Figure S3. Microphotograph of otolith of a Japanese anchovy from 25 March 2020, Tosa Bay (TOB) (standard length (SL) = 21.28 mm; Age = 35). The black arrow indicates the primordium, the red line represents the count axis, and the blue dot indicates the daily incremental count point.

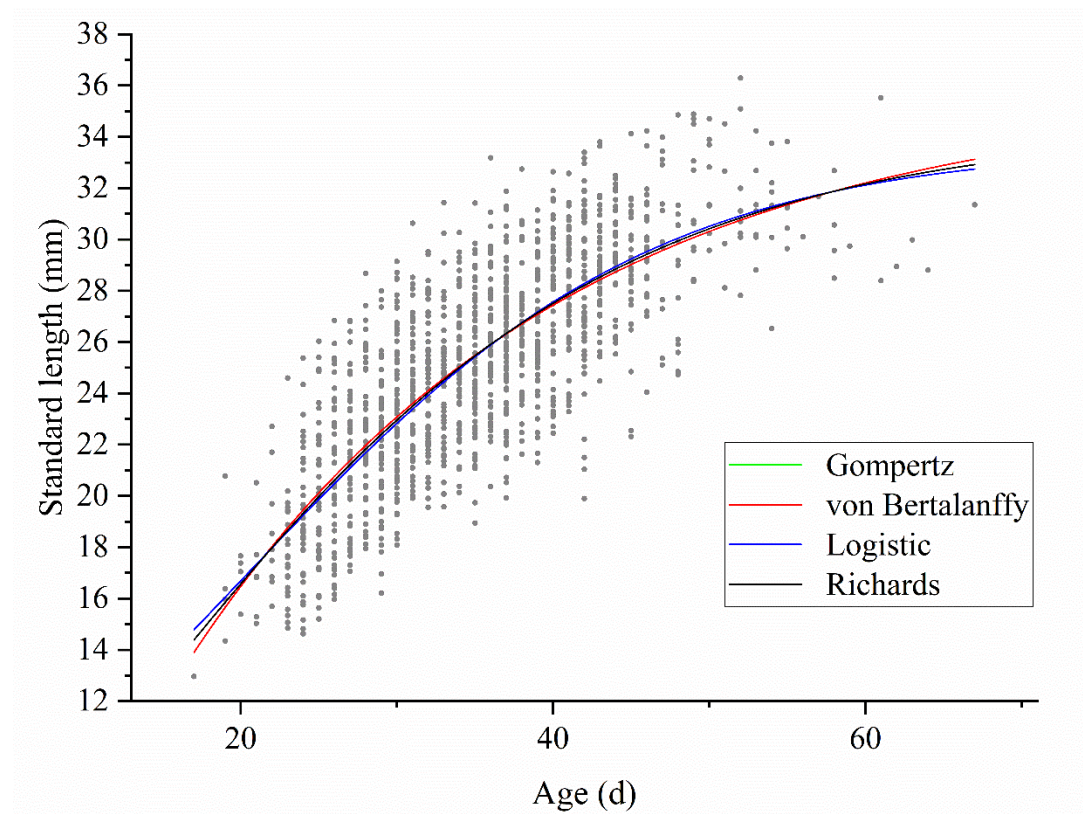


Figure S4. Growth curves of the four growth models for larval and juvenile Japanese anchovy off the Pacific coast of Japan in 2020–2021.

Table S1. Multiple comparisons of Area-effect on mean daily growth rate in HD-based model.

	Estimate	Std. Error	z value	Pr(> z)
CWI – SEB = 0	0.087	0.017	5.084	<0.001***
SAB – SEB = 0	0.063	0.020	3.159	0.016*
SUB – SEB = 0	0.073	0.022	3.332	0.009**
TOB – SEB = 0	–0.017	0.021	–0.841	1.000
SAB – CWI = 0	–0.024	0.014	–1.732	0.832
SUB – CWI = 0	–0.014	0.014	–0.982	1.000
TOB – CWI = 0	–0.104	0.013	–8.198	<0.001***
SUB – SAB = 0	0.010	0.014	0.753	1.000
TOB – SAB = 0	–0.080	0.013	–6.381	<0.001***
TOB – SUB = 0	–0.090	0.008	–10.749	<0.001***