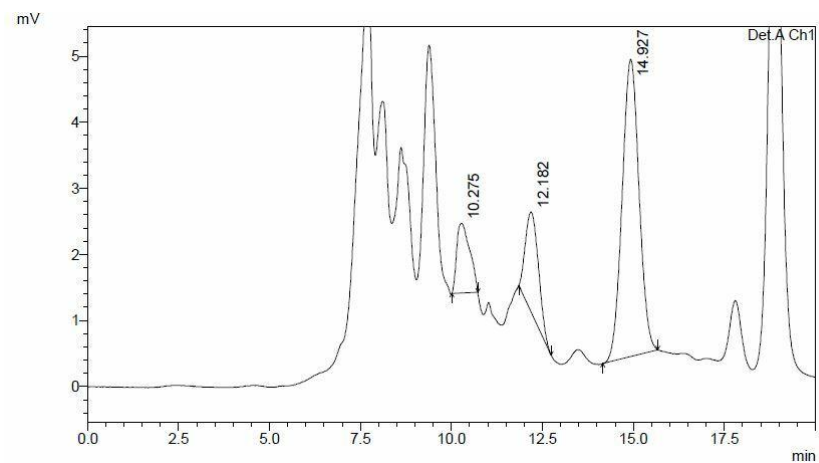


HPLC CHROMATOGRAMS

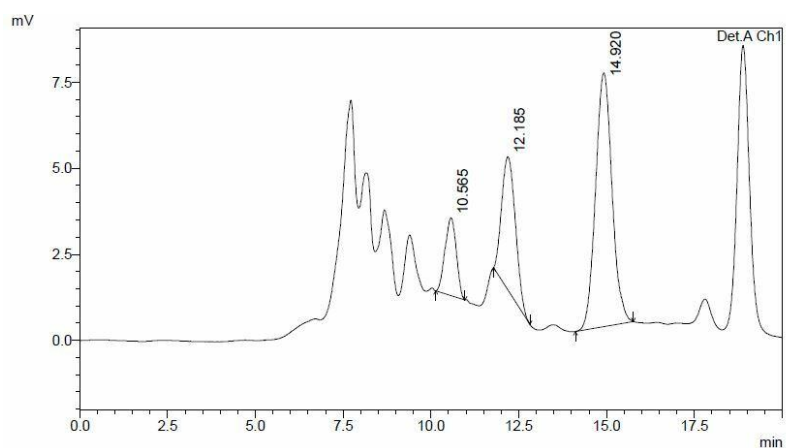
CARBOHYDRATES

Time: Start of fermentation (substrate)

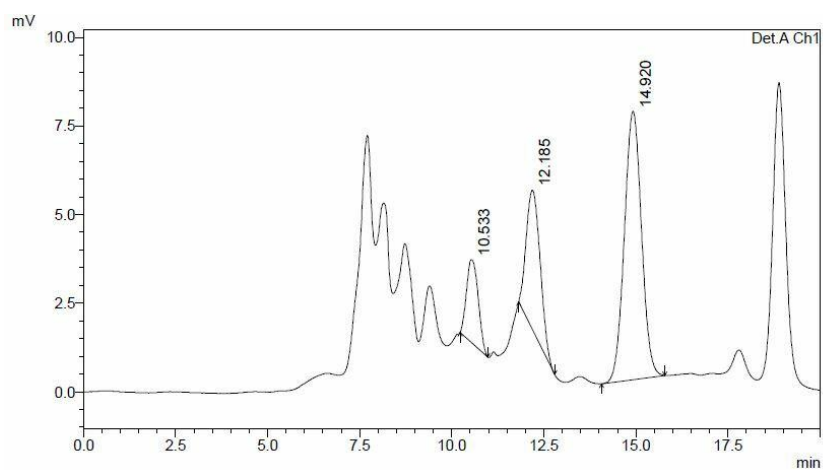
Control:



Extract:

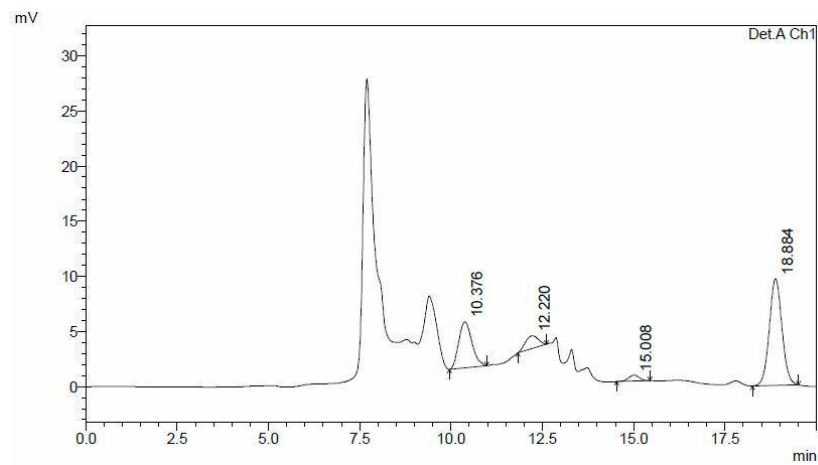


Microcapsule:

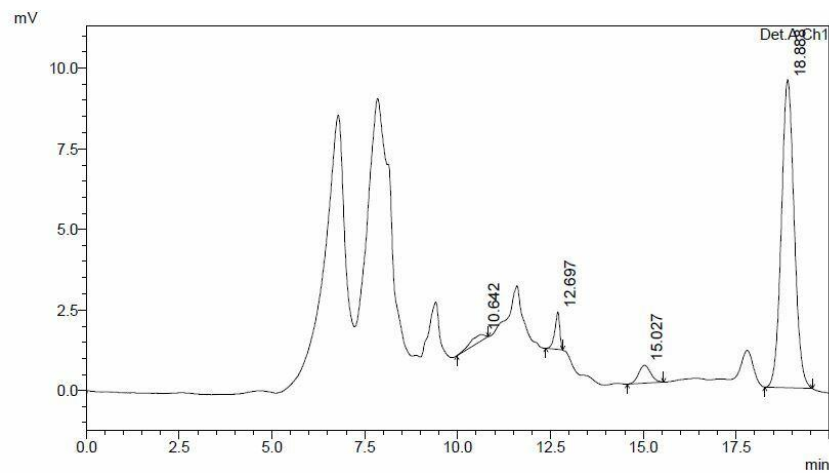


Time: End of fermentation

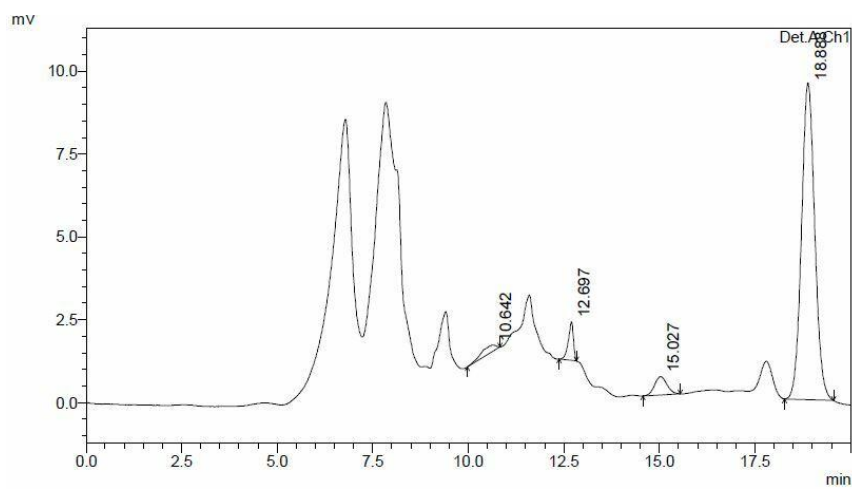
Control:



Extract:

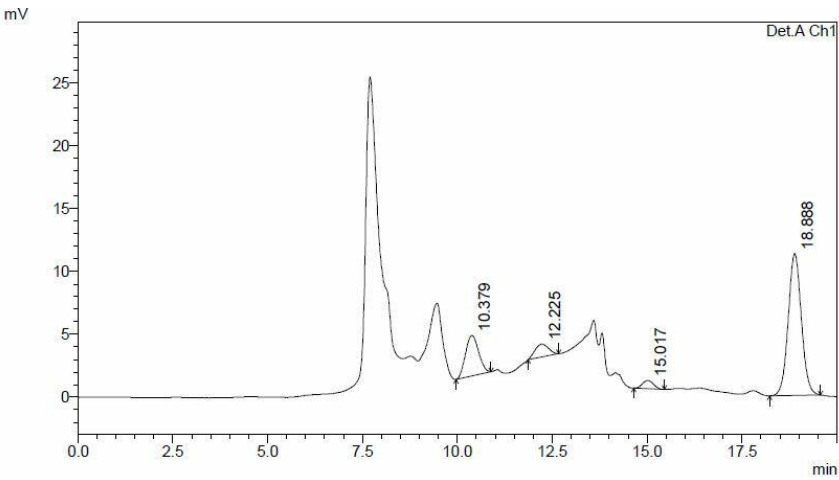


Microcapsule:

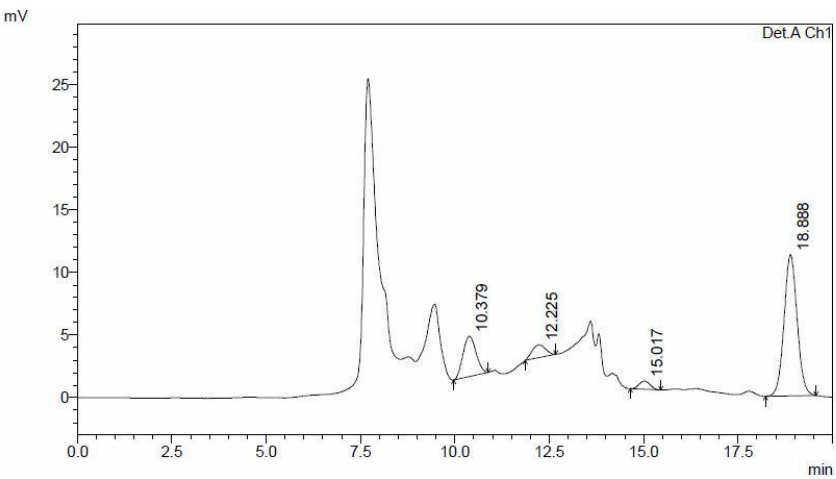


Time: 28 days of storage at 4°C

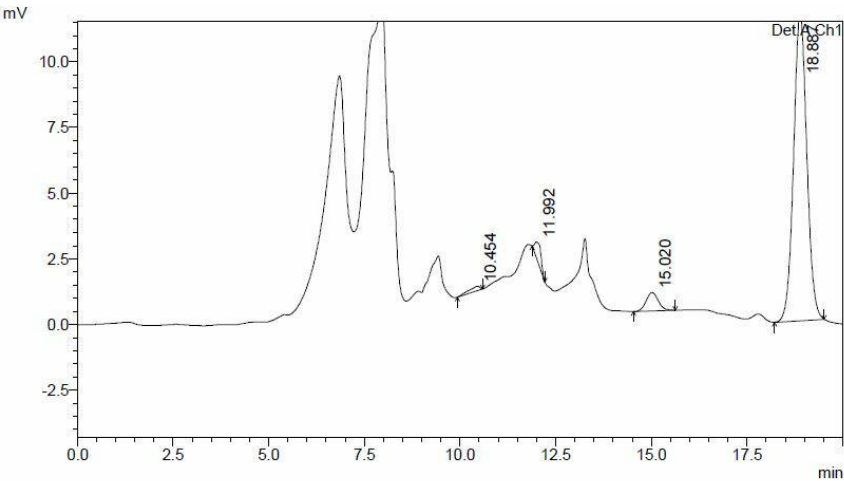
Control:



Extract:



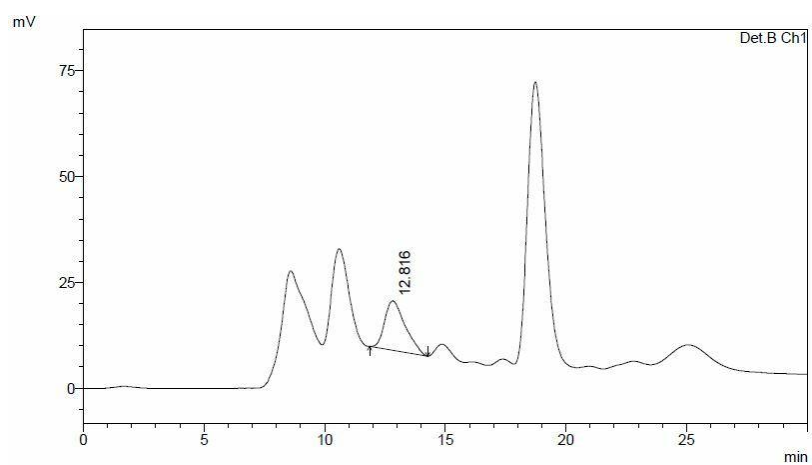
Microcapsule:



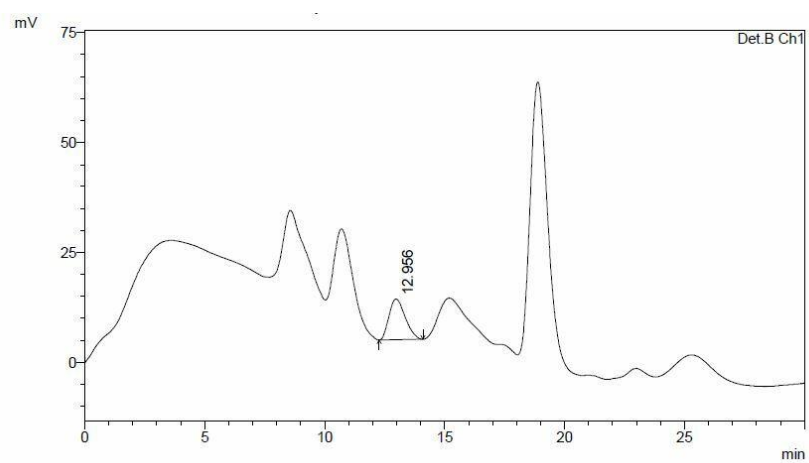
ACIDS

Time: Start of fermentation (substrate)

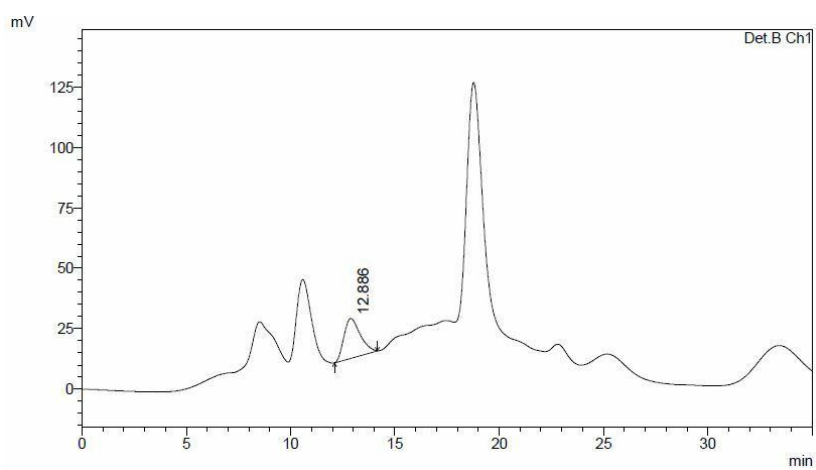
Control:



Extract:

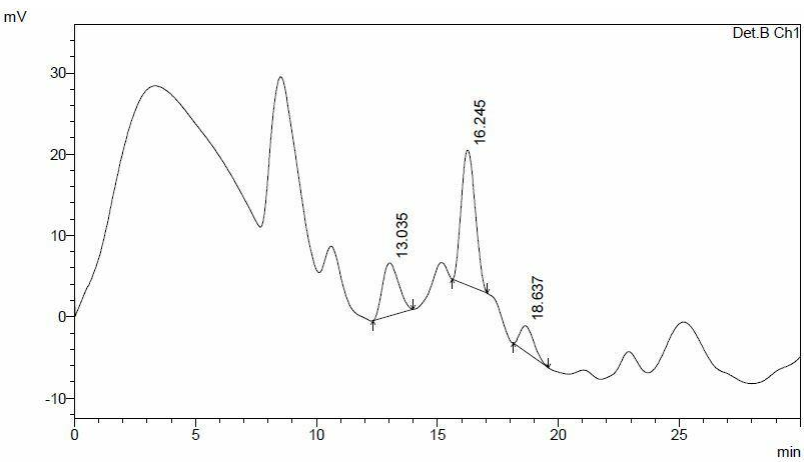


Microcapsule:

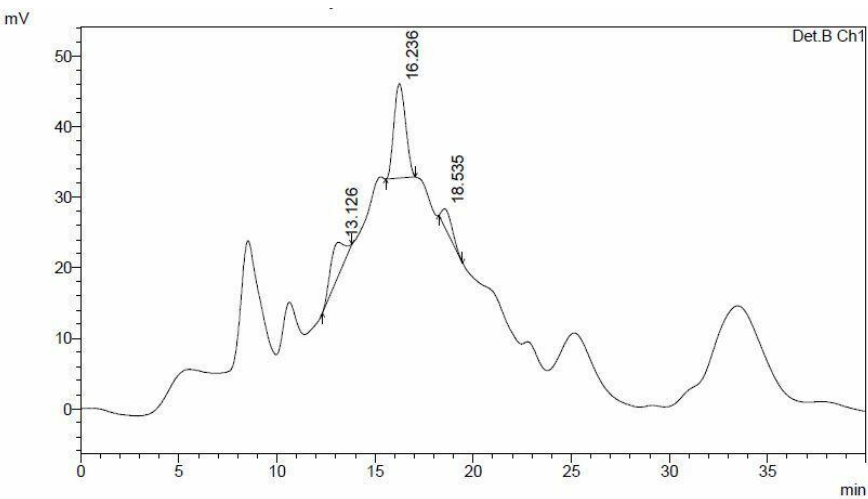


Time: End of fermentation

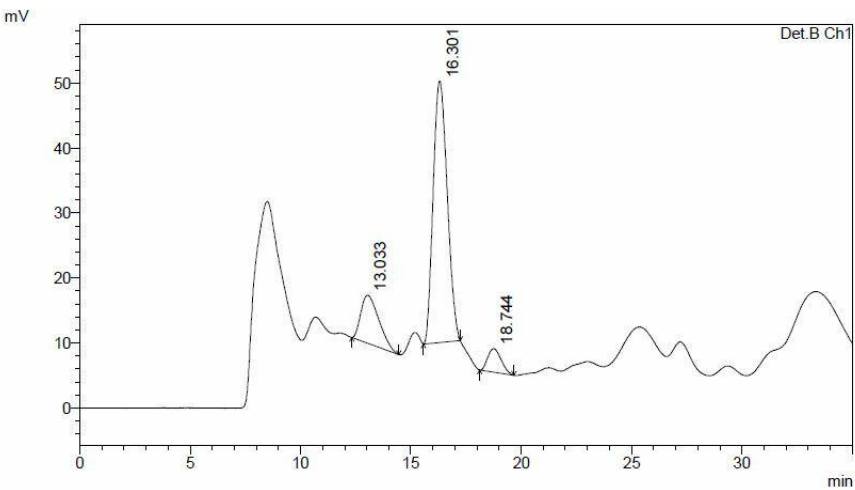
Control:



Extract:

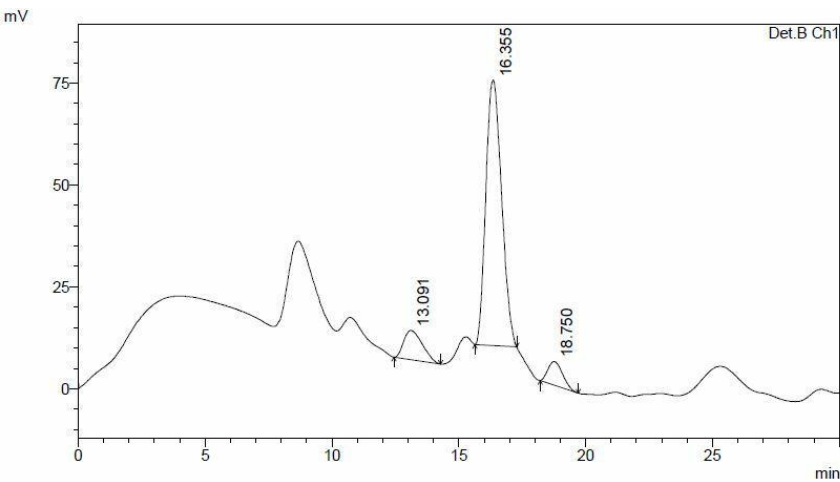


Microcapsule:

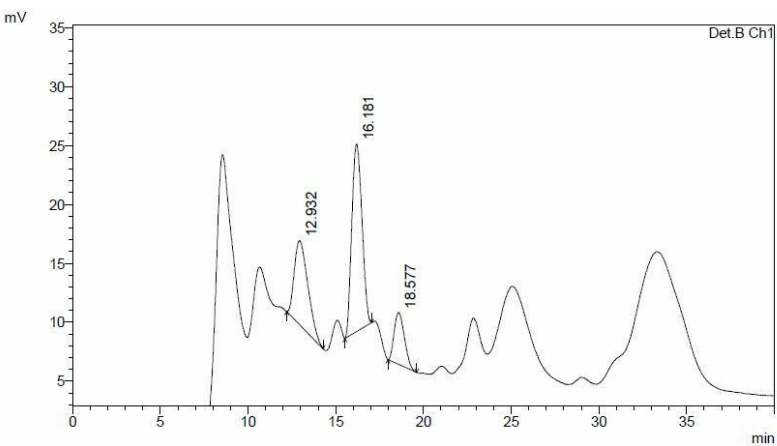


Time: 28 days of storage at 4°C

Control:



Extract:



Microcapsule:

