

Table S1. Source and Biotype of native *S. cerevisiae* strains. Biotype combination coming from the match of both profiles delta12/21 and ISSR. In particular, combining delta12/21 profile (I) and ISSR profile (I) it was obtained the Biotype **I**; in the same way, delta12/21 profile (II) and ISSR profile (I) it was obtained the Biotype **II**; delta12/21 profile (II) and ISSR profile (IV) it was obtained the Biotype **III**; delta12/21 profile (I) and ISSR profile (III) it was obtained the Biotype **IV**; delta12/21 profile (IV) and ISSR profile (I) it was obtained the Biotype **V**; delta12/21 profile (I) and ISSR profile (IV) it was obtained the Biotype **VI**; delta12/21 profile (III) and ISSR profile (I) it was obtained the Biotype **VII**; delta12/21 profile (V) and ISSR profile (I) it was obtained the Biotype **VIII**; delta12/21 profile (VI) and ISSR profile (II) it was obtained the Biotype **IX**.

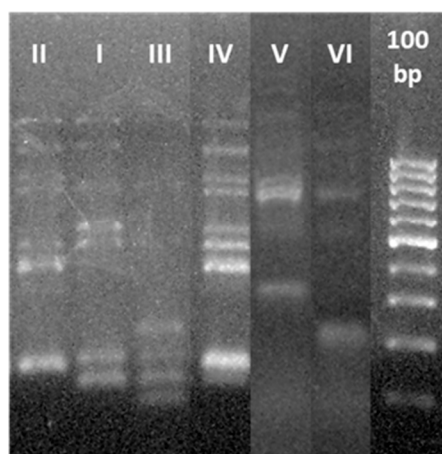
Sampling year	Source of <i>S. cerevisiae</i> isolates	Isolates code	Biotype combination	delta12/21 profile	ISSR profile
2016	Montepulciano grape - sample n.8	M8_1	I	I	I
	Montepulciano grape - sample n.8	M8_2	I	I	I
	Montepulciano grape - sample n.8	M8_3	I	I	I
	Montepulciano grape - sample n.8	M8_4	I	I	I
	Montepulciano grape - sample n.8	M8_5	I	I	I
	Montepulciano grape - sample n.9	M9_1	IV	I	III
	Montepulciano grape - sample n.9	M9_2	I	I	I
	Montepulciano grape - sample n.9	M9_3	VI	I	IV
	Montepulciano grape - sample n.9	M9_4	III	II	IV
	Montepulciano grape - sample n.9	M9_5	III	II	IV
	Verdicchio spontaneous fermentation	V_V5	I	I	I
	Verdicchio spontaneous fermentation	V_V6	I	I	I
	Verdicchio spontaneous fermentation	V_V7	I	I	I
	Verdicchio spontaneous fermentation	V_C8	II	II	I
	Verdicchio spontaneous fermentation	V_C9	II	II	I
	Verdicchio spontaneous fermentation	V_C10	II	II	I
	Verdicchio spontaneous fermentation	V_PV1	II	II	I
	Verdicchio spontaneous fermentation	V_PV2	II	II	I
	Verdicchio spontaneous fermentation	V_PV3	II	II	I
	Verdicchio spontaneous fermentation	V_PV4	II	II	I
	Verdicchio spontaneous fermentation	VFF_1	I	I	I
	Verdicchio spontaneous fermentation	VFF_2	VII	III	I
	Verdicchio spontaneous fermentation	VFF_3	I	I	I
	Verdicchio spontaneous fermentation	VFF_4	I	I	I

	Verdicchio spontaneous fermentation	VFF_5	I	I	I
	Verdicchio spontaneous fermentation	VFF_6	I	I	I
	Verdicchio spontaneous fermentation	VFF_7	I	I	I
	Verdicchio spontaneous fermentation	VFF_8	I	I	I
	Verdicchio spontaneous fermentation	VFF_9	V	IV	I
	Verdicchio spontaneous fermentation	VFF_10	I	I	I
	Winery environment - floor	PAV_1	I	I	I
	Winery environment - floor	PAV_2	I	I	I
	Winery environment - floor	PAV_3	I	I	I
	Winery environment - floor	PAV_4	I	I	I
	Winery environment - floor	PAV_5	I	I	I
	Winery environment - wall	MUR_1	I	I	I
	Winery environment - wall	MUR_2	I	I	I
	Winery environment - wall	MUR_3	II	II	I
	Winery equipment - fermentation tank	TIN_2	I	I	I
	Winery equipment - fermentation tank	TIN_3	I	I	I
	Winery equipment - fermentation tank	TIN_4	I	I	I
	Winery equipment - fermentation tank	TIN_5	I	I	I
	Winery equipment - fermentation tank	VAL_1	I	I	I
2019	Verdicchio grape - sample n.1	U1_1	I	I	I
	Verdicchio grape - sample n.1	U1_2	I	I	I
	Verdicchio grape - sample n.1	U1_3	I	I	I
	Verdicchio grape - sample n.1	U1_4	I	I	I
	Verdicchio grape - sample n.1	U1_5	I	I	I
	Verdicchio grape - sample n.1	U1_6	I	I	I
	Verdicchio grape - sample n.1	U1_7	I	I	I
	Verdicchio grape - sample n.2	U2_7_1	II	II	I
	Verdicchio grape - sample n.2	U2_7_2	II	II	I
	Verdicchio grape - sample n.2	U2_7_3	II	II	I
	Verdicchio grape - sample n.2	U2_7_4	II	II	I
	Verdicchio grape - sample n.2	U2_7_5	II	II	I
	Verdicchio grape - sample n.2	U2_7_6	II	II	I
	Verdicchio grape - sample n.2	U2_7_7	III	II	IV
	Verdicchio grape - sample n.2	U2_7_8	II	II	I

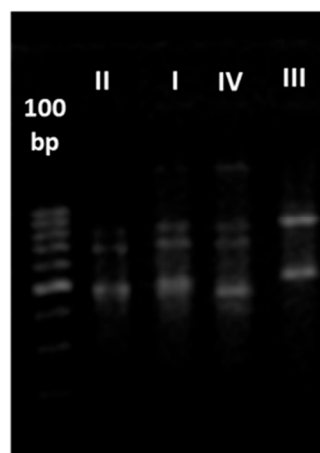
Verdicchio grape - sample n.2	U2_7_9	II	II	I
Verdicchio grape - sample n.2	U2_7_10	II	II	I
Verdicchio grape - sample n.2	U2_15_1	II	II	I
Verdicchio grape - sample n.2	U2_15_2	II	II	I
Verdicchio grape - sample n.2	U2_15_3	II	II	I
Verdicchio grape - sample n.2	U2_15_4	II	II	I
Verdicchio grape - sample n.2	U2_15_5	II	II	I
Verdicchio grape - sample n.2	U2_15_6	II	II	I
Verdicchio grape - sample n.2	U2_15_7	II	II	I
Verdicchio grape - sample n.2	U2_15_8	II	II	I
Verdicchio grape - sample n.2	U2_15_9	II	II	I
Verdicchio grape - sample n.2	U2_15_10	II	II	I
Verdicchio spontaneous fermentation	PD_1	II	II	I
Verdicchio spontaneous fermentation	PD_2	VIII	V	I
Verdicchio spontaneous fermentation	PD_3	I	I	I
Verdicchio spontaneous fermentation	PD_4	I	I	I
Verdicchio spontaneous fermentation	PD_5	II	II	I
Verdicchio spontaneous fermentation	PD_6	IV	I	III
Verdicchio spontaneous fermentation	PD_7	I	I	I
Verdicchio spontaneous fermentation	PD_8	I	I	I
Verdicchio spontaneous fermentation	MOS_1	II	II	I
Verdicchio spontaneous fermentation	MOS_2	V	IV	I
Verdicchio spontaneous fermentation	MOS_3	I	I	I
Verdicchio spontaneous fermentation	MOS_4	II	II	I
Verdicchio spontaneous fermentation	MOS_5	II	II	I
Verdicchio spontaneous fermentation	MOS_6	IX	VI	II
Verdicchio spontaneous fermentation	MOS_7	II	II	I
Verdicchio spontaneous fermentation	MOS_8	II	II	I
Verdicchio spontaneous fermentation	MOS_9	III	II	IV
Verdicchio spontaneous fermentation	MOS_10	I	I	I
Verdicchio spontaneous fermentation	Vop_1	III	II	IV
Verdicchio spontaneous fermentation	Vop_2	III	II	IV
Winery environment - floor	P_1	II	II	I
Winery environment - floor	P_2	II	II	I

Winery environment - floor	P_3	II	II	I
Winery environment - floor	P_4	I	I	I
Winery environment - floor	P_5	I	I	I
Winery environment - floor	P_6	I	I	I
Winery environment - floor	P_7	I	I	I
Winery environment - floor	P_8	I	I	I

Figure S1. Electrophoresis gels of native *S. cerevisiae* strains. (a) represents the different biotypes (I, II, III, IV, V, VI) obtained by $\delta 12-21$ analyses. (b) represents the different biotypes (I, II, III, IV) obtained by ISSR-PCR. In both agarose gels, the lane indicated as 100bp represents the molecular weight marker.



(a)



(b)