

Supplementary Materials:

Image-Based Evaluation of Cracking Degrees on Wood Fiber Bundles: A Machine Learning Approach

Research Institute of Wood Industry, Chinese Academy of Forestry,
Beijing 100091, China;
victor_chai@foxmail.com (Z.C.); heng_vision@163.com (H.L.);
guohaomeng8@outlook.com (H.G.)
* Correspondence: yjh@caf.ac.cn

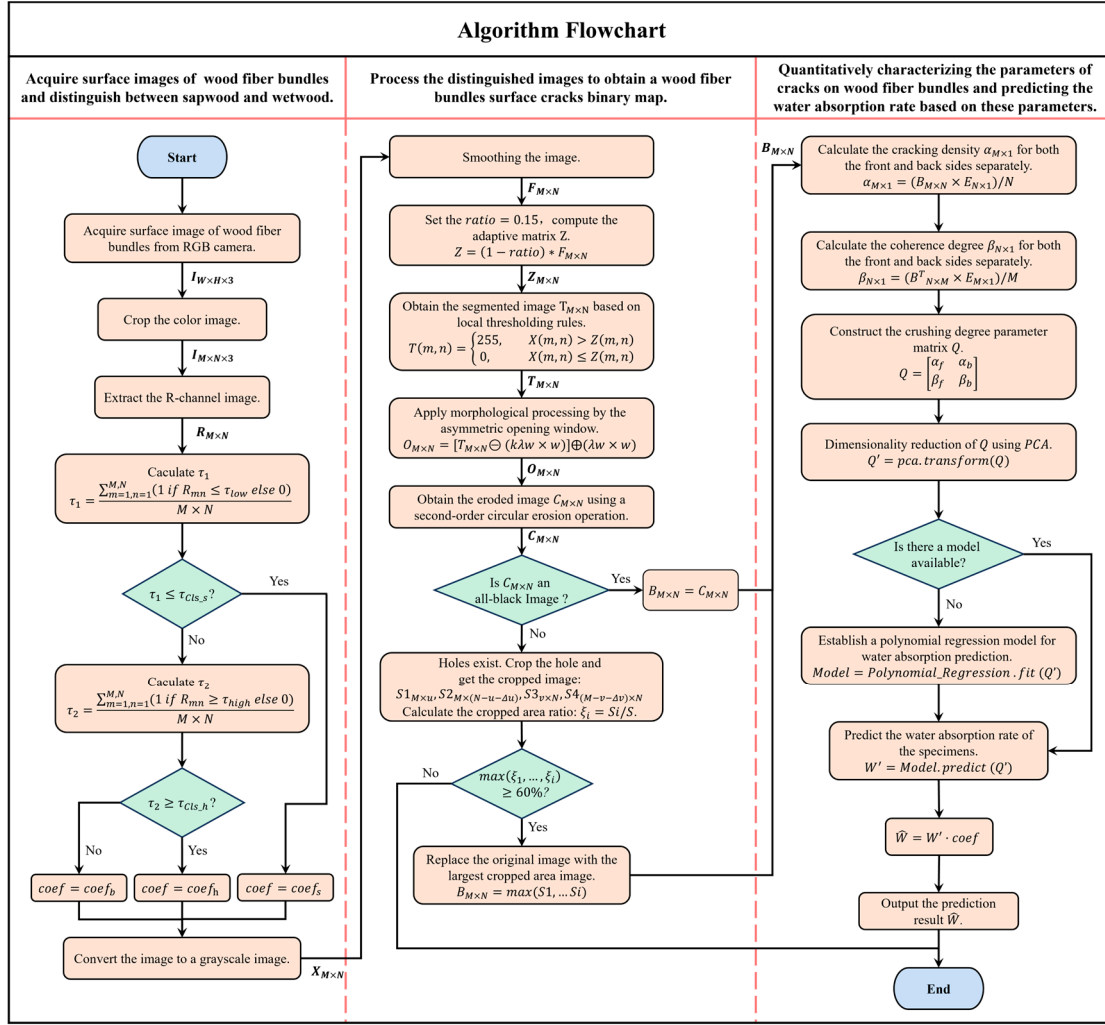


Figure S1. Flowchart of the algorithm for predicting WAR of WFB.

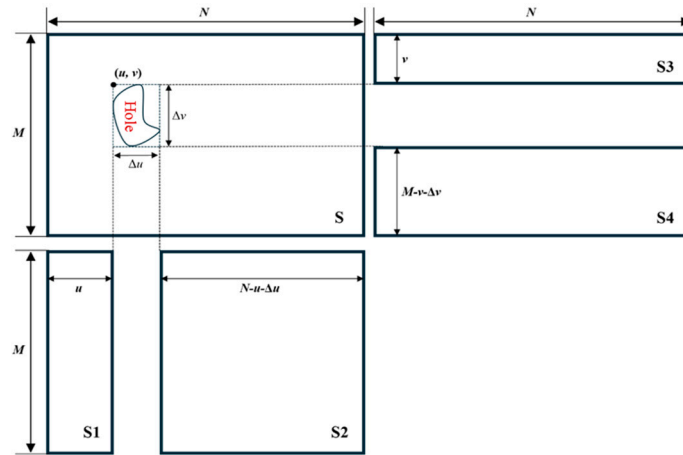


Figure S2. Schematic diagram of hole cropping.