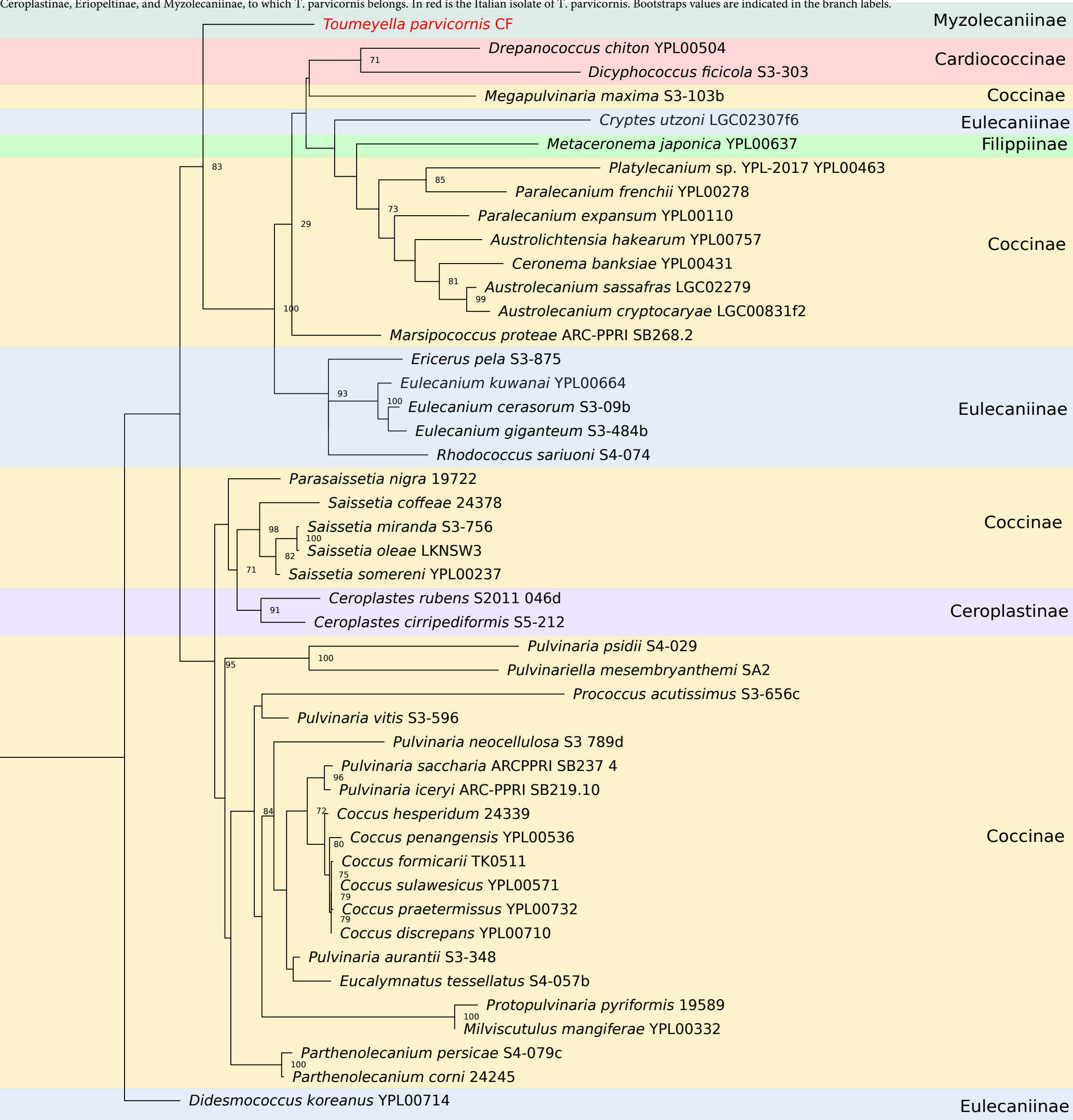


Figure S2. RAxML phylogenetic tree of the rRNA 28S fragment D gene among the Coccidae family. Colors indicate the morphological subfamilies: Eulecaniinae, Filippiinae, Coccinae, Cardiococcinae, Ceroplastinae, Eriopeltinae, and Myzolecaniinae, to which *T. parvicornis* belongs. In red is the Italian isolate of *T. parvicornis*. Bootstraps values are indicated in the branch labels.



0.07