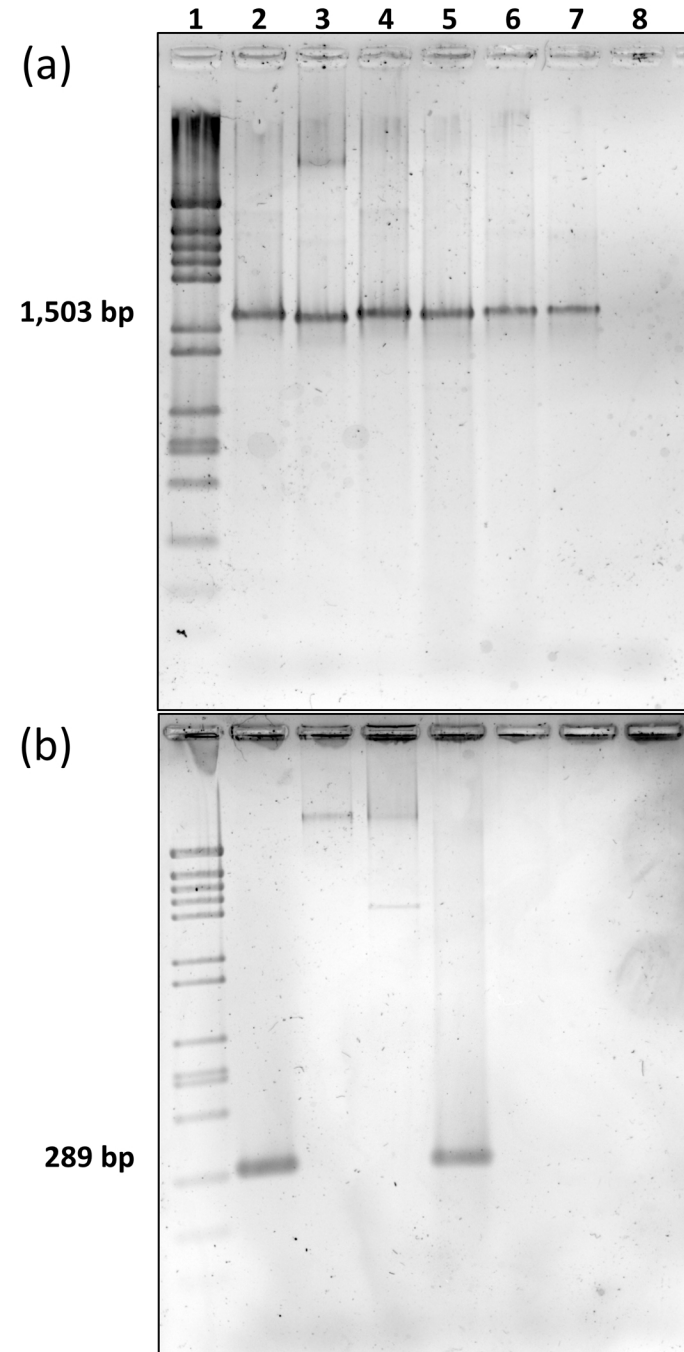


Figure S1. Map of the sampling area



Line	Strain	Reference	
1.	Ø29 Ladder		
2.	<i>Arthrobacter</i> sp. AFG20.1	Fernández-González <i>et al.</i> 2017	DOI:10.1038/s41598-017-06112-3
3.	<i>Bradyrhizobium canariense</i> GV102	Cobo-Díaz <i>et al.</i> 2014	DOI:10.1016/j.syapm.2013.09.008
4.	<i>Pseudomonas</i> sp. P49	Lasa <i>et al.</i> 2019	DOI:10.1371/journal.pone.0214422
5.	<i>Streptomyces</i> sp. NMW37	Unpublished	
6.	<i>Escherichia coli</i> DH5α	Bethesda Research Laboratories 1986	
7.	<i>Paenibacillus polymyxa</i> PIC73	Gómez-Lama Cabanás <i>et al.</i> 2018	DOI:10.3390/agriculture8070090
8.	Negative control		

Figure S2. PCR to check actinobacterial primers specificity. Panel (a) shows PCRs of universal primers for *16S rRNA* gene (9bfm and 1512ur). Panel (b) shows PCRs of primer pair 3AF and Act2R for actinobacterial *16S rRNA* gene amplification used in qPCRs.