

Supplementary material

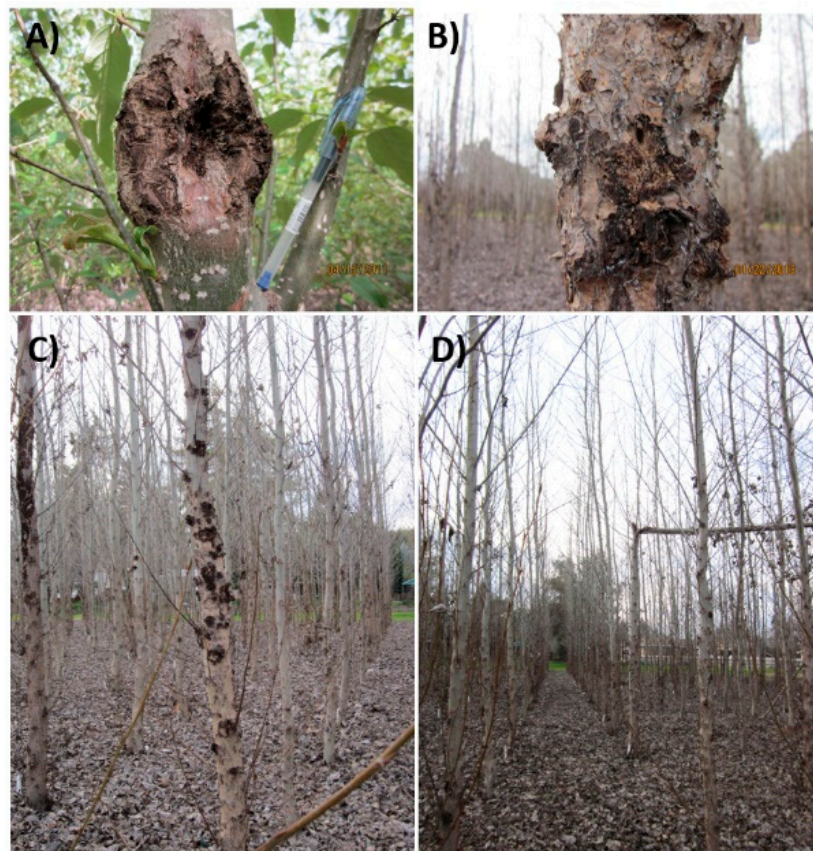


Figure S1. Damage produced by *S. calcarata* in the assessed *P. trichocarpa* trees. A) Swelling around larvae galleries. B) Stem with the typical effect of galleries on the bark. C) Multiple damaged areas within a stem. D) Stem broken by the combined effect of insect damage and wind.

Table S1. Metabolites with significant effect as a covariate on association models, and SNP-markers significantly associated with the presence of *S. calcarata* in stems.

Metabolite	KEGG ID	Binbase ID	SNP	p-value	q-value
<i>Adipic acid</i>	C06104	218815	Chr17_5374630	6.72E-07	0.42326004
			Chr17_5592339	1.25E-06	0.78467665
			Chr04_19461858	1.42E-06	0.89516486
			Chr10_17623737	1.70E-06	1
			Chr17_5592348	1.88E-06	1
<i>Similar to gluconic acid lactone</i>	-	506931	Chr10_17623737	6.44E-07	0.40580396
			Chr17_5592339	9.71E-07	0.61138533
			Chr17_5592348	1.82E-06	1
			Chr04_19461858	2.62E-06	1
			Chr19_2345511	2.81E-06	1
<i>Similar to glucoheptonic acid</i>	-	199205	Chr10_17623737	5.96E-07	0.37523362
			Chr17_5592339	6.50E-07	0.40943862
			Chr17_5592348	1.20E-06	0.75839902
			Chr04_19461858	2.46E-06	1
			Chr19_2345511	2.56E-06	1
<i>Similar to lactobionic acid</i>	-	446842	Chr10_17623737	3.61E-07	0.22727223
			Chr17_5592339	1.35E-06	0.85198592
			Chr04_19461858	2.46E-06	1
			Chr17_5592348	2.54E-06	1
			Chr19_2345511	2.81E-06	1

Table S2. General statistics for the presence of *S. calcarata* in the trial.

	Number of trees	Attacked (%)	Non-attacked (%)
Block 1	440	14.3	85.7
Block 2	436	15.6	84.4
Block 3	414	15.0	85.0
<i>Average</i>	430	15.0	85.0
<i>Std.Dev.</i>	14.0	0.6	0.6
<i>Coef. of var.</i>	3.3	4.3	0.8