

Supporting Information (online only)

For

Disturbance-dependent variation in functional redundancy drives the species versus functional diversity relationship across spatial scales and vegetation layers

Shekhar R. Biswas, Chaoqin Yin, Li Gong ,Yanxia Qing and Jialin Li

Contents

Figure S1: Trait-trait correlations among the measured traits in this study	2
Figure S2: Variations in functional composition (community-weighted mean of individual traits) concerning disturbance and vegetation layers.	Error! Bookmark not defined.
Figure S3: Variations in functional composition (community-weighted mean of individual traits) concerning spatial scale and vegetation layers.	4
Table S1: List of species found in this study	5
Table S2: Results of mixed-effect models showing the effects of habitat disturbance and spatial scale on species and functional diversity relationships for woody, non-woody and woody + non-woody layers. Bold font represents statistical significance ($\alpha = 0.05$).	9

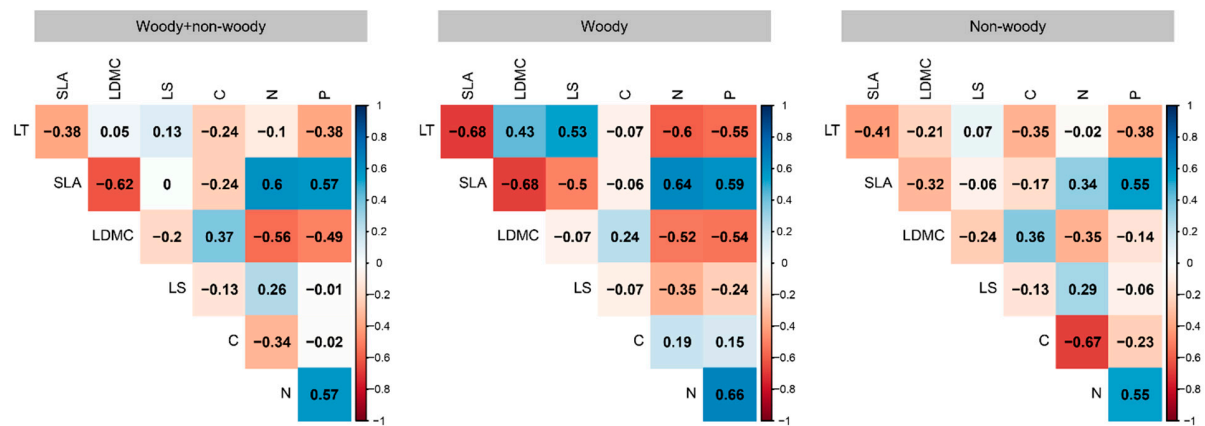


Figure S1. Trait-trait correlations among the measured traits in this study.

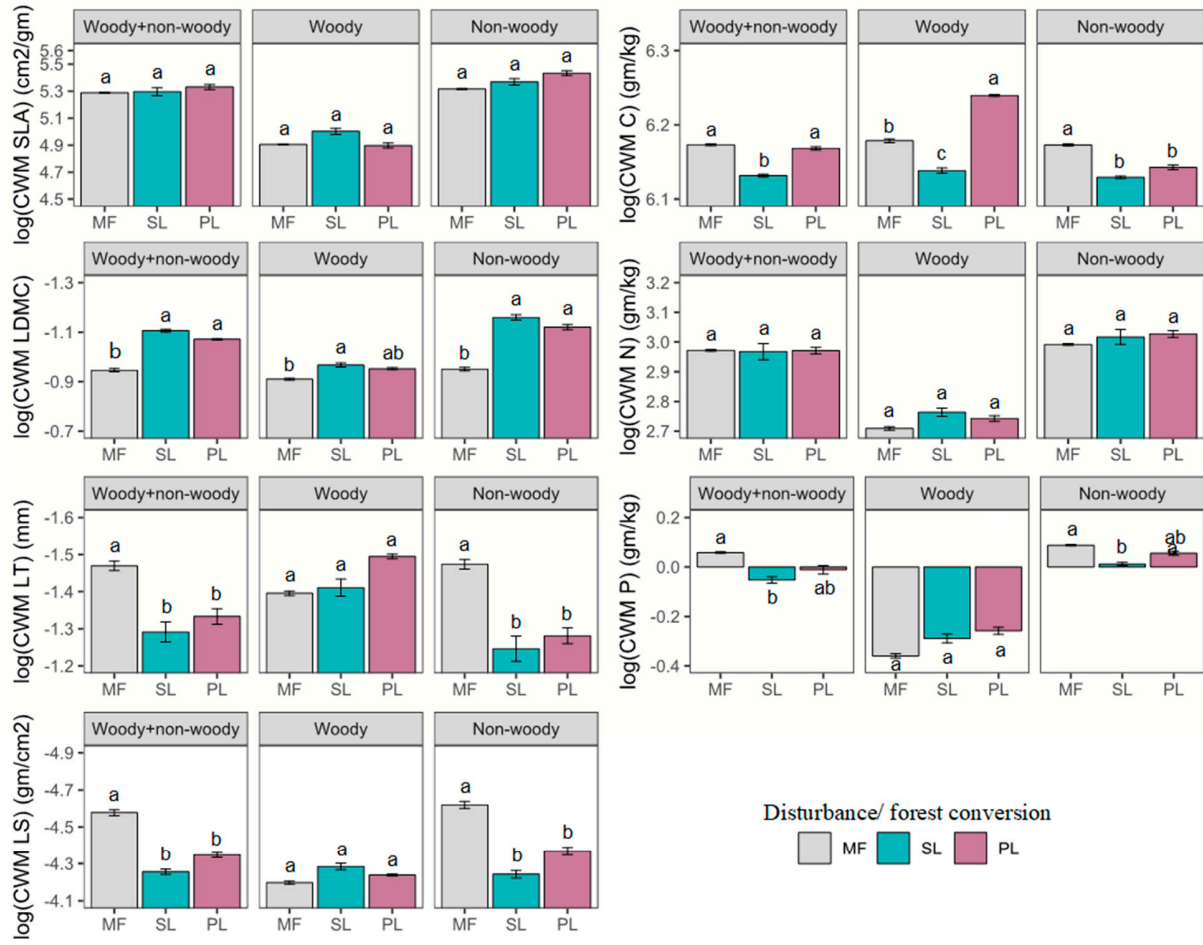


Figure S2: Variations in functional composition (community-weighted mean of individual traits) concerning disturbance and vegetation layers. Shown in the figures are mean \pm 1se. Bars marked with the same letters do not differ significantly at $\alpha = 0.05$, as identified by Tukey's posthoc test.

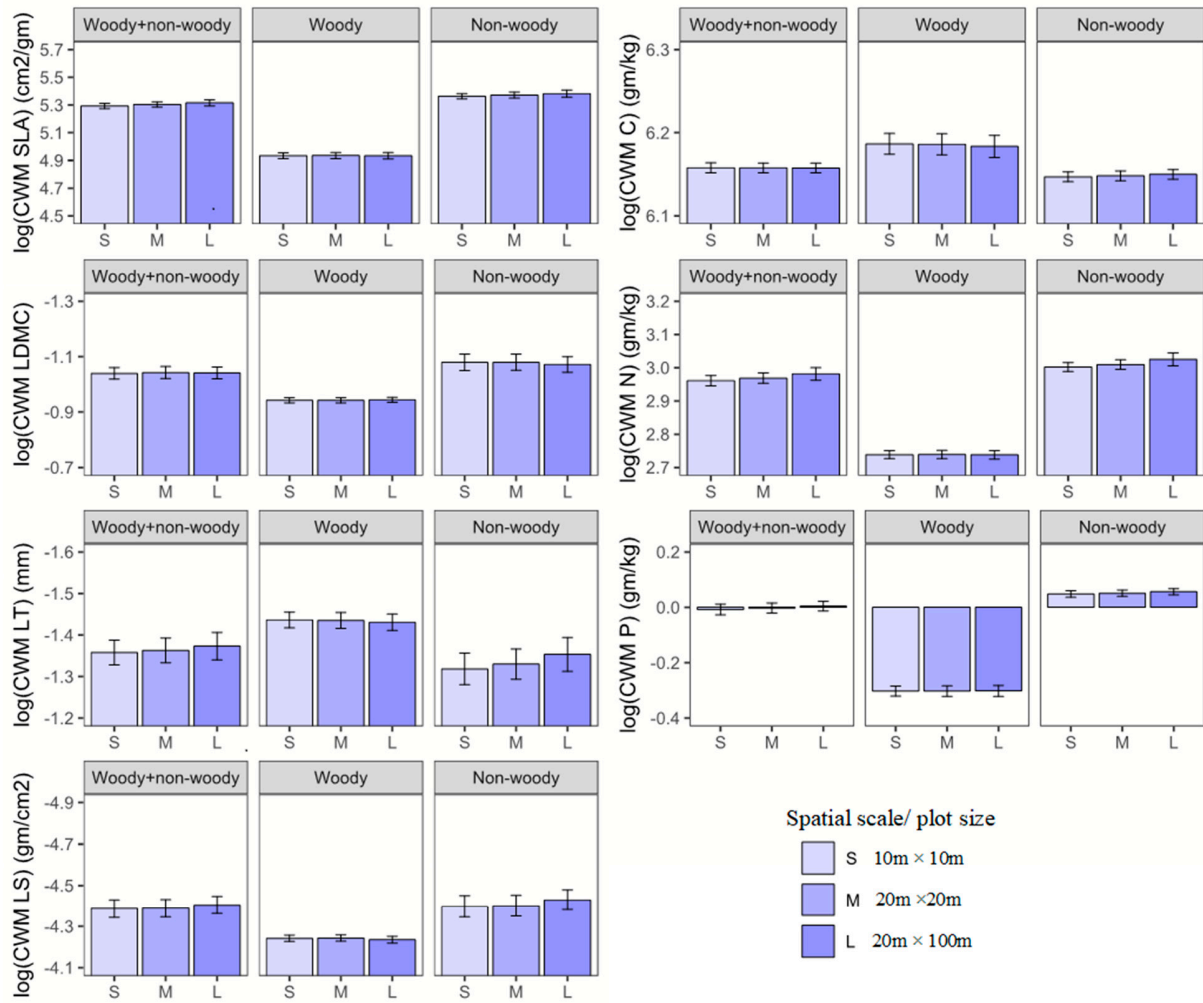


Figure S3: Variations in functional composition (community-weighted mean of individual traits) concerning spatial scale and vegetation layers. Shown in the figures are mean \pm 1 se.

Table S1: List of species found in this study

Chinese name	Scientific name	Life form
三角槭	<i>Acer buergerianum</i>	Woody species
秀丽槭	<i>Acer elegantulum</i>	Woody species
毛脉槭	<i>Acer pubinerve</i>	Woody species
杨桐	<i>Adinandra millettii</i>	Woody species
合欢	<i>Albizia julibrissin</i>	Woody species
山槐	<i>Albizia kalkora</i>	Woody species
拟赤杨	<i>Alniphyllum fortunei</i>	Woody species
毛柄连蕊茶	<i>Camellia fraterna</i>	Woody species
油茶	<i>Camellia oleifera</i>	Woody species
雷公鹅耳枥	<i>Carpinus viminea</i>	Woody species
米槭	<i>Castanopsis carlesii</i>	Woody species
栲	<i>Castanopsis fargesii</i>	Woody species
苦槭	<i>Castanopsis scerophylla</i>	Woody species
朴树	<i>Celtis sinensis</i>	Woody species
迎春樱桃	<i>Cerasus discoidea</i>	Woody species
大叶早樱	<i>Cerasus subhirtella</i>	Woody species
南酸枣	<i>Choerospondias axillaris</i>	Woody species
香樟	<i>Cinnamomum camphora</i>	Woody species
细叶香桂	<i>Cinnamomum subavenium</i>	Woody species
大青	<i>Clerodendrum cyrtophyllum</i>	Woody species
赤皮青冈	<i>Cyclobalanopsis gilva</i>	Woody species
小叶青冈	<i>Cyclobalanopsis myrsinifolia</i>	Woody species
云山青冈	<i>Cyclobalanopsis sessilifolia</i>	Woody species
褐叶青冈	<i>Cyclobalanopsis stewardiana</i>	Woody species
黄檀	<i>Dalbergia hupeana</i>	Woody species
虎皮楠	<i>Daphniphyllum oldhami</i>	Woody species
柿子	<i>Diospyros kaki</i>	Woody species
浙江柿	<i>Diospyros montana</i>	Woody species
罗浮柿	<i>Diospyros morrisiana</i>	Woody species
油柿	<i>Diospyros oleifera</i>	Woody species
杨梅叶蚊母树	<i>Distylium myricoides</i>	Woody species
厚壳树	<i>Ehretia thyrsoiflora</i>	Woody species
日本杜英	<i>Elaeocarpus japonicus</i>	Woody species
铁海棠	<i>Euphorbia milii</i>	Woody species
细枝柃	<i>Eurya loquaiana</i>	Woody species
格药柃	<i>Eurya muricata</i>	Woody species

Chinese name	Scientific name	Life form
窄基红褐桉	<i>Eurya rubiginosa</i>	Woody species
野鸦椿	<i>Euscaphis japonica</i>	Woody species
青桐	<i>Firmiana platanifolia</i>	Woody species
牛鼻栓	<i>Fortunearia sinensis</i>	Woody species
苦枥木	<i>Fraxinus insularis</i>	Woody species
梔子花	<i>Gardenia jasminoides</i>	Woody species
小果山龙眼	<i>Helicia cochinchinensis</i>	Woody species
短梗冬青	<i>Ilex buergeri</i>	Woody species
冬青	<i>Ilex chinensis</i>	Woody species
毛枝冬青	<i>Ilex dasyclada</i>	Woody species
皱柄冬青	<i>Ilex kengii</i>	Woody species
小果冬青	<i>Ilex micrococca</i>	Woody species
铁冬青	<i>Ilex rotunda</i>	Woody species
披针叶茴香	<i>Illicium lanceolatum</i>	Woody species
刺楸	<i>Kalopanax septemlobus</i>	Woody species
刺叶桂樱	<i>Laurocerasus spinulosa</i>	Woody species
水腊	<i>Ligustrum obtusifolium</i>	Woody species
山胡椒	<i>Lindera glauca</i>	Woody species
红脉钓樟	<i>Lindera rubronervia</i> Gamble	Woody species
枫香树	<i>Liquidambar formosana</i>	Woody species
石栎	<i>Lithocarpus glaber</i>	Woody species
东南石栎	<i>Lithocarpus harlandii</i>	Woody species
山鸡椒	<i>Litsea cubeba</i>	Woody species
黄丹木姜子	<i>Litsea elongata</i>	Woody species
欒木	<i>Loropetalum chinense</i>	Woody species
红楠	<i>Machilus thunbergii</i>	Woody species
野桐	<i>Mallotus japonicus</i>	Woody species
深山含笑	<i>Michelia maudiae</i>	Woody species
杨梅	<i>Myrica rubra</i>	Woody species
浙江新木姜子	<i>Neolitsea aurata</i>	Woody species
宁波木犀	<i>Osmanthus cooperi</i>	Woody species
桂花	<i>Osmanthus fragrans</i>	Woody species
光叶石楠	<i>Photinia glabra</i>	Woody species
小叶石楠	<i>Photinia parvifolia</i>	Woody species
海金子	<i>Pittosporum illicioides</i>	Woody species
化香	<i>Platycarya strobilacea</i>	Woody species
豆腐柴	<i>Premna microphylla</i>	Woody species
桂樱	<i>Prunus laurocerasus</i>	Woody species
麻栎	<i>Quercus acutissima</i>	Woody species

Chinese name	Scientific name	Life form
小叶栎	<i>Quercus chenii</i>	Woody species
白栎	<i>Quercus fabri</i>	Woody species
青冈	<i>Quercus glauca</i>	Woody species
苦栎	<i>Quercus laevis</i>	Woody species
石斑木	<i>Rhaphiolepis indica</i>	Woody species
马银花	<i>Rhododendron ovatum</i>	Woody species
杜鹃花	<i>Rhododendron simsii</i>	Woody species
盐肤木	<i>Rhus chinensis</i>	Woody species
檫木	<i>Sassafras tzumu</i>	Woody species
木荷	<i>Schima superba</i>	Woody species
赛山梅	<i>Styrax confusus</i>	Woody species
薄叶山矾	<i>Symplocos anomala</i>	Woody species
倒披针叶山矾	<i>Symplocos oblanceolata</i>	Woody species
白檀	<i>Symplocos paniculata</i>	Woody species
老鼠矢	<i>Symplocos stellaris</i>	Woody species
山矾	<i>Symplocos sumuntia</i>	Woody species
赤楠	<i>Syzygium buxifolium</i>	Woody species
白花苦灯笼	<i>Tarenna mollissima</i>	Woody species
漆树	<i>Toxicodendron vernicifluum</i>	Woody species
南烛	<i>Vaccinium bracteatum</i>	Woody species
黄背越桔	<i>Vaccinium iteophyllum</i>	Woody species
江南越橘	<i>Vaccinium mandarinorum</i>	Woody species
油桐	<i>Vernicia fordii</i>	Woody species
宜昌荚蒾	<i>Viburnum erosum</i>	Woody species
花椒	<i>Zanthoxylum bungeanum</i>	Woody species
木通	<i>Akebia quinata</i>	Non-woody species
山葡萄	<i>Ampelopsis brevipedunculata</i>	Non-woody species
蛇葡萄	<i>Ampelopsis sinica</i>	Non-woody species
紫金牛	<i>Ardisia japonica</i>	Non-woody species
勾儿茶	<i>Berchemia sinica</i> Schneid	Non-woody species
葡蟠	<i>Broussonetia kaempferi</i>	Non-woody species
过山枫	<i>Celastrus aculeatus</i>	Non-woody species
单叶双盖蕨	<i>Deparia lancea</i>	Non-woody species
芒萁	<i>Dicranopteris dichotoma</i>	Non-woody species
里白	<i>Diplazium glaucum</i>	Non-woody species
红盖鳞毛蕨	<i>Dryopteris erythrosora</i>	Non-woody species
丽江鳞毛蕨	<i>Dryopteris montigena</i>	Non-woody species
蛇莓	<i>Duchesnea indica</i>	Non-woody species
大吴风草	<i>Farfugium japonicum</i>	Non-woody species

Chinese name	Scientific name	Life form
绞股蓝	<i>Gynostemma pentaphyllum</i>	Non-woody species
箬竹	<i>Indocalamus tessellatus</i>	Non-woody species
南五味子	<i>Kadsura logipedunculata</i>	Non-woody species
金银花	<i>Lonicera japonica</i>	Non-woody species
淡竹叶	<i>Lophatherum gracile</i>	Non-woody species
海金沙	<i>Lygodium japonicum</i>	Non-woody species
杜茎山	<i>Maesa japonica</i>	Non-woody species
沿阶草	<i>Ophiopogon bodinieri</i>	Non-woody species
紫萁	<i>Osmunda japonica</i>	Non-woody species
鸡矢藤	<i>Paederia scandens</i>	Non-woody species
Species	Latin name	Life form
水竹	<i>Phyllostachys heteroclada</i>	Non-woody species
菝葜	<i>Smilax china</i>	Non-woody species
千金藤	<i>Stephania japonica</i>	Non-woody species
络石	<i>Trachelospermum jasminoides</i>	Non-woody species
油点草	<i>Tricyrtis macropoda</i>	Non-woody species
紫藤	<i>Wisteria sinensis</i>	Non-woody species
狗脊	<i>Woodwardia japonica</i>	Non-woody species

Table S2: Results of mixed-effect models showing the effects of habitat disturbance and spatial scale on species and functional diversity relationships for woody, non-woody and woody + non-woody layers. Bold font represents statistical significance ($\alpha = 0.05$).

<i>Model relevant to hypotheses</i>					<i>Fitted model</i>				
(a) Species richness-functional richness relationship in woody layers									
<i>Fixed effects</i>	numDF	denDF	F-value	p-value	<i>Fixed effects</i>	numDF	denDF	F-value	p-value
(Intercept)	1	13	1414.192	< 0.0001	(Intercept)	1	17	1982.321	< 0.0001
log(richness)	1	13	1020.05	< 0.0001	log(richness)	1	17	1255.07	< 0.0001
Disturbance	2	9	32.1886	0.0001	Disturbance	2	9	40.4604	< 0.0001
Spatial scale	2	13	4.9972	0.0246	Spatial scale	2	17	6.5888	0.0076
log(richness):Disturbance	2	13	16.7719	0.0003	log(richness):Disturbance	2	17	16.843	0.0001
log(richness):Spatial scale	2	13	7.3977	0.0072	log(richness):Spatial scale	2	17	7.8019	0.0039
Disturbance:Spatial scale	4	13	0.3014	0.8719					
<i>Random effects (StdDev)</i>					<i>Random effects (StdDev)</i>				
site: 0.1311205 (intercept)					site: 0.1036881 (intercept)				
Spatial scale %in% site: 0.121159 (intercept); 0.05260605 (res)					Spatial scale %in% site: 0.120545 (intercept); 0.04957394 (res)				
AIC: 25.39789; BIC: 43.94561; logLik: 4.301055					AIC: 17.67429; BIC: 34.02954; logLik: 4.162857				
(b) Species evenness-functional evenness relationship in woody layers									
<i>Fixed effects</i>	numDF	denDF	F-value	p-value	<i>Fixed effects</i>	numDF	denDF	F-value	p-value
(Intercept)	1	13	423.9203	< 0.0001	(Intercept)	1	19	638.185	< 0.0001
log(Evar)	1	13	93.6597	< 0.0001	log(Evar)	1	19	130.897	< 0.0001

Disturbance	2	9	0.3175	0.7358	Spatial scale	2	19	0.8746	0.4331
Spatial scale	2	13	0.8098	0.4662	log(Evar):Spatial scale	2	19	6.233	0.0083
log(Evar):Disturbance	2	13	0.7145	0.5077					
log(Evar):Spatial scale	2	13	6.5433	0.0108					
Disturbance:Spatial scale	4	13	0.5794	0.6828					
<i>Random effects (StdDev)</i>					<i>Random effects (StdDev)</i>				
site: 0.06657712 (intercept)					site: 0.0325984 (intercept)				
Spatial scale %in% site: 0.1176006 (intercept); 0.0438779 (res)					Spatial scale %in% site: 0.121604 (intercept); 0.0363736 (res)				
AIC: 25.95032; BIC: 44.49804; logLik: 4.024841					AIC: -2.907229; BIC: 9.703548; logLik: 10.45361				

(c) Species diversity-functional diversity relationship in woody layers

<i>Fixed effects</i>	numDF	denDF	F-value	p-value	<i>Fixed effects</i>	numDF	denDF	F-value	p-value
(Intercept)	1	13	80.7735	<0.0001	(Intercept)	1	23	81.13703	<0.0001
log(Species diversity)	1	13	286.0755	<0.0001	log(Species diversity)	1	23	108.8915	<0.0001
Disturbance	2	9	0.65001	0.5449					
Spatial scale	2	13	36.654	<0.0001					
log(Species diversity):Disturbance	2	13	5.56667	0.0179					
log(Species diversity): Spatial scale	2	13	4.03662	0.0433					
Disturbance: Spatial scale	4	13	1.38476	0.2929					
<i>Random effects (StdDev)</i>					<i>Random effects (StdDev)</i>				
site: 0.3599029 (intercept)					site: 0.3510388 (intercept)				
Spatial scale %in% site: 0.05406032 (intercept); 0.03935568 (res)					Spatial scale %in% site: 0.1274053 (intercept); 0.07337433 (res)				

AIC: 16.24265; BIC: 34.79037; logLik: 8.878677

AIC: 12.48434; 20.11614; logLik: -1.242169

(d) Species richness-functional richness relationship in non-woody layers

<i>Fixed effects</i>	numDF	denDF	F-value	p-value	<i>Fixed effects</i>	numDF	denDF	F-value	p-value
(Intercept)	1	13	373.7536	<0.0001	(Intercept)	1	23	515.8541	<0.0001
log(richness)	1	13	436.6051	<0.0001	log(richness)	1	23	452.9774	<0.0001
Disturbance	2	9	0.1281	0.8814					
Spatial scale	2	13	0.525	0.6036					
log(richness): Spatial scale	2	13	0.6221	0.552					
log(richness): Spatial scale	2	13	2.0944	0.1627					
Disturbance: Spatial scale	4	13	0.4311	0.7838					
<i>Random effects (StdDev)</i>					<i>Random effects (StdDev)</i>				
site: 0.3058164 (intercept)					site: 0.2554895 (intercept)				
Spatial scale %in% site: 0.1527584 (intercept); 0.07838734 (res)					Spatial scale %in% site: 0.1521594 (intercept); 0.07526573 (res)				
AIC: 41.19177; BIC: 59.7395; logLik: -3.595887					AIC: 13.83727; BIC: 21.46908; logLik: -1.918637				

(e) Species evenness-functional evenness relationship in non-woody layers

<i>Fixed effects</i>	numDF	denDF	F-value	p-value	<i>Fixed effects</i>	numDF	denDF	F-value	p-value
(Intercept)	1	13	129.15	<0.0001	(Intercept)	1	23	126.0473	<0.0001
log(Evar)	1	13	0.0033	0.9551	log(Evar)	1	23	0.22188	0.642
Disturbance	2	9	2.07233	0.1819					
Spatial scale	2	13	7.79113	0.006					
log(Evar):Disturbance	2	13	1.47053	0.2656					
log(Evar): Spatial scale	2	13	0.85597	0.4475					
Disturbance: Spatial scale	4	13	3.10082	0.0536					

Random effects (StdDev)

site: 0.1962443 (intercept)

Spatial scale %in% site: 0.1997083 (intercept); 0.08477458 (res)

AIC: 49.2826; BIC: 67.83032; logLik: -7.641298

Random effects (StdDev)

site: 0.1531631 (intercept)

Spatial scale %in% site: 0.2912275 (intercept); 0.1068549 (res)

AIC: 38.40402; BIC: 46.03582; logLik: -14.20201

(f) Species diversity-functional diversity relationship in non-woody layers

<i>Fixed effects</i>	numDF	denDF	F-value	p-value	<i>Fixed effects</i>	numDF	denDF	F-value	p-value
(Intercept)	1	13	75.51696	<0.0001	(Intercept)	1	23	90.83944	<0.0001
log(Species diversity)	1	13	144.3509	<0.0001	log(Species diversity)	1	23	143.127	<0.0001
Disturbance	2	9	0.45626	0.6475					
Spatial scale	2	13	1.02649	0.3856					
log(Species diversity):Disturbance	2	13	0.9193	0.4232					
log(Species diversity): Spatial scale	2	13	2.74641	0.1012					
Disturbance: Spatial scale	4	13	0.15483	0.9574					

Random effects (StdDev)

site: 0.2097169 (intercept)

Spatial scale %in% site: 0.03441179 (intercept); 0.02432411 (res)

AIC: -6.314668; 12.23305; logLik: 20.15733

Random effects (StdDev)

site: 0.190901 (intercept)

Spatial scale %in% site: 0.03454414 (intercept); 0.02532032 (res)

AIC: -59.07616; BIC: -51.44436; logLik: 34.53808

(g) Species richness-functional richness relationship in woody and non-woody layers combined

<i>Fixed effects</i>	numDF	denDF	F-value	p-value	<i>Fixed effects</i>	numDF	denDF	F-value	p-value
(Intercept)	1	13	647.4161	<0.0001	(Intercept)	1	21	616.2284	<0.0001
log(richness)	1	13	258.4929	<0.0001	log(richness)	1	21	270.1342	<0.0001

Disturbance	2	9	5.6448	0.0258	Disturbance	2	9	5.3819	0.029
Spatial scale	2	13	0.1644	0.8502	log(S): Disturbance	2	21	5.0523	0.0162
log(richness):Disturbance	2	13	4.6932	0.0292					
log(richness): Spatial scale	2	13	1.921	0.1858					
Disturbance: Spatial scale	4	13	0.8993	0.4923					
<i>Random effects (StdDev)</i>					<i>Random effects (StdDev)</i>				
site: 0.1809013 (intercept)					site: 0.187327 (intercept)				
Spatial scale %in% site: 0.1336633 (intercept); 0.06126598 (res)					Spatial scale %in% site: 0.1298101 (intercept); 0.06110076 (res)				
AIC: 29.58537; BIC: 48.13309; logLik: 2.207314					AIC: 13.69687; BIC: 26.30765; logLik: 2.151564				

(h) Species evenness-functional evenness relationship in woody and non-woody layers combined

<i>Fixed effects</i>	numDF	denDF	F-value	p-value	<i>Fixed effects</i>	numDF	denDF	F-value	p-value
(Intercept)	1	13	964.2905	<0.0001	(Intercept)	1	19	724.2672	<0.0001
log(Evar)	1	13	4.6619	0.0501	log(Evar)	1	19	2.3757	0.1397
Disturbance	2	9	2.5813	0.13	Spatial scale	2	19	32.4973	<.0001
Spatial scale	2	13	33.4699	<0.0001	log(Evar): Spatial scale	2	19	7.7021	0.0036
log(Evar): Disturbance	2	13	1.4474	0.2707					
log(Evar): Spatial scale	2	13	7.6	0.0065					
Disturbance: Spatial scale	4	13	0.6513	0.6361					
<i>Random effects (StdDev)</i>					<i>Random effects (StdDev)</i>				
site: 0.02661224 (intercept)					site: 0.04831632 (intercept)				
Spatial scale %in% site: 0.1081581 (intercept); 0.03059314 (res)					Spatial scale %in% site: 0.1060043 (intercept); 0.03754336 (res)				
AIC: 14.34219; BIC: 32.88991; logLik: 9.828905					AIC: -10.29944; BIC: 2.311338; logLik: 14.14972				

(i) Species diversity-functional diversity relationship in woody and non-woody layers combined

<i>Fixed effects</i>	numDF	denDF	F-value	p-value	<i>Fixed effects</i>	numDF	denDF	F-value	p-value
(Intercept)	1	13	329.4658	<0.0001	(Intercept)	1	19	372.0936	<0.0001
log(Species diversity)	1	13	135.9715	<0.0001	log(Species diversity)	1	19	117.4201	<0.0001
Disturbance	2	9	3.7399	0.0657	Spatial scale	2	19	4.5029	0.0251
Spatial scale	2	13	2.4623	0.1239	log(Species diversity): Spatial scale	2	19	4.0223	0.0349
log(Species diversity):Disturbance	2	13	2.1254	0.159					
log(Species diversity):Spatial scale	2	13	6.1319	0.0133					
Disturbance:Spatial scale	4	13	0.4001	0.8052					
<i>Random effects (StdDev)</i>					<i>Random effects (StdDev)</i>				
site: 0.1891207 (intercept)					site: 0.1775943 (intercept)				
Spatial scale %in% site: 0.02747623 (intercept); 0.01954483 (res)					Spatial scale %in% site: 0.0300881 (intercept); 0.02212692 (res)				
AIC: -17.30541; BIC: 1.242307; logLik: 25.65271					AIC: -43.35325; BIC: -30.74248; logLik: 30.67663				

