



Figure S1. Photographs captured in the field to assist identification of vine presence and abundance and disturbance across all National Parks. Top; The (left) displays few vines considered less than 1 tower, the (middle) shows a cluster of vines grouped into a tower and the (right) shows a clump of vines which were identified both in the canopy and on the ground level. Bottom; The (left) displays branches dispersed on the forest floor, the (middle) shows an example of logs burnt down from a tree and (right) shows a tree fall identified at most burnt locations.



Figure S2. Disturbance map of Main Range NP displaying 2012 clearings data, rainforest.

polygon, site locations and disturbance points.

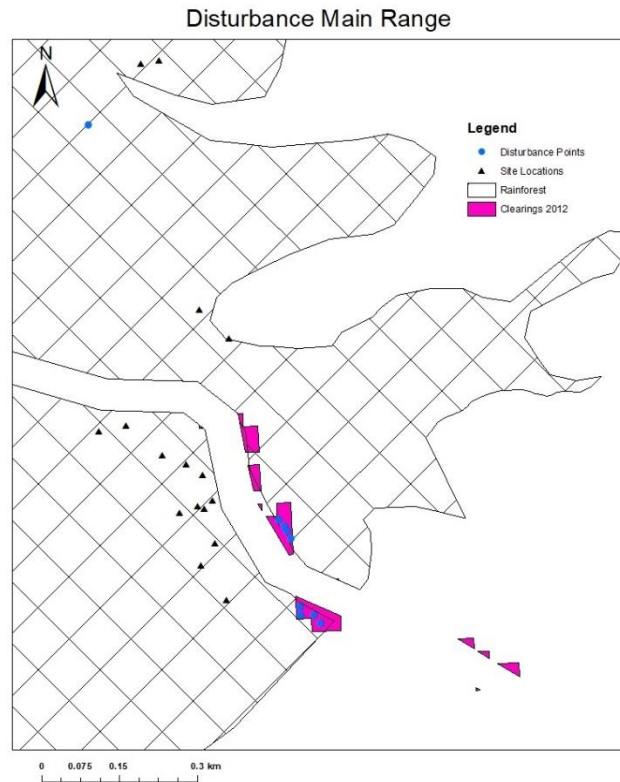


Figure S3. Fire severity (dNBR) mapping of all Bulburin National Park.

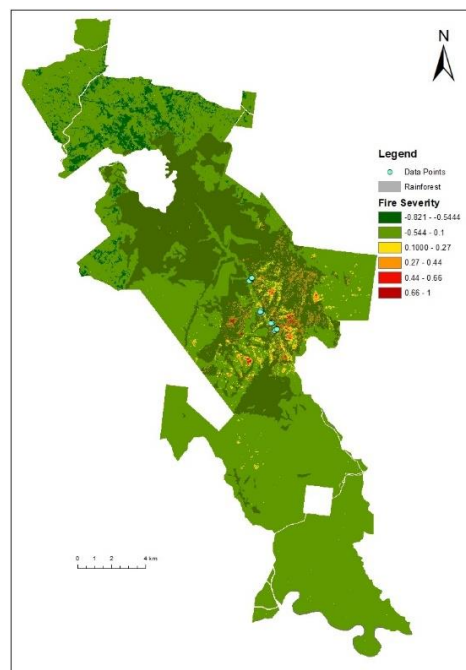


Figure S4. Fire severity mapping at Main range national park.

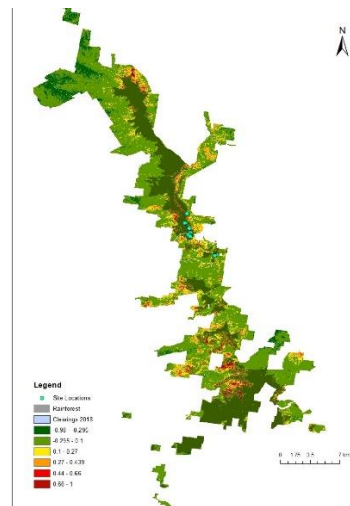


Figure S5. Fire severity mapping at Lamington National Park.