

Supplementary Materials

Table S1. Mangrove genera classified into different root morphologies analysed in this review.

Root type classification	Genus	Species
Pencil-roots	<i>Avicennia</i>	<i>A. alba</i>
		<i>A. germinans</i>
		<i>A. marina</i>
		<i>A. officinalis</i>
		<i>A. schaueriana</i>
	<i>Laguncularia</i>	<i>L. racemosa</i>
	<i>Sonneratia</i>	<i>S. alba</i>
		<i>S. apelata</i>
Stilt-roots	<i>Aegiceras</i>	<i>A. corniculatum</i>
	<i>Kandelia</i>	<i>K. candel</i>
	<i>Rhizophora</i>	<i>R. apiculata</i>
		<i>R. mangle</i>
		<i>R. mucronata</i>
		<i>R. racemosa</i>
		<i>R. stylosa</i>
Knee-roots	<i>Bruguiera</i>	<i>B. cylindrica</i>
		<i>B. gymnorrhiza</i>
		<i>B. parviflora</i>
		<i>B. sexangula</i>
		<i>C. australis</i>
	<i>Ceriops</i>	<i>C. decandra</i>
		<i>C. tagal</i>
		<i>X. moluccensis</i>
	<i>Xylocarpus</i>	

Table S2. Number of recorded from studies (by country) including in the meta-analysis conducted in this review.

Study	Country	No. of Records
Chan 1988	Malaysia	3
Chenani et al., 2011	Iran	1
Chithambaran 2019	Saudi Arabia	11
Chowdhury et al., 2018	India	5
Das et al., 1997	India	18
Erftemeijer et al., 2018	Australia	4
Fan 2007	China	2
Fernandes et al., 2007	Brazil	7
Gilman & Ellison 2007	American Samoa	2
Goforth & Thomas 1980	Florida	6
Hashim et al., 2010	Malaysia	1
Huber 2004	Brazil	11
Jintana et al., 1995	Thailand	4
Kainuma et al., 2013	Republic of Kiribati	1
Kirui et al., 2008	Kenya	3
Kitaya et al., 2006	Vietnam	25
Komiyama et al., 1996	Thailand	5
Kumara et al., 2010	Sri Lanka	4
Lang'at et al., 2009	Kenya	1
Lewis 1979	Virgin Island	1
Loi et al., 2019	Vietnam	4
Macy et al., 2021	Louisiana	3
Matsui et al., 2012	Thailand	4
McGuinness 1997	Australia	3
Meinardi 2010	Vietnam	10
Menezes et al., 2005	Brazil	7
Miah & Moula 2020	Bangladesh	2
Miah et al., 2014	Bangladesh	5
Naohiro et al., 2012	Thailand	3
Osunkoya & Creese 1997	New Zealand	8
Padron 1996	Cuba	4
Paludo & Klonowski 1999	Brazil	8
Pramudji and Dharmawan 2016	Indonesia	2
Rasool et al., 2002	Pakistan	9
Ren et al., 2009	China	6
Saenger 1996	Australia	2
Saenger & Siddiqi 1993	Bangladesh	5
Stephen 1984	Florida	1
Stevenson et al., 1999	Thailand	3

Than et al., 2006	Myanmar	5
Thuy & Loc 2007	Vietnam	2
Toledo et al., 2001	Mexico	1
Tovilla Hernández 2016	Mexico	5
Untawale 1996	India	6
Zabbey & Tanee 2016	Nigeria	2
TOTAL		225

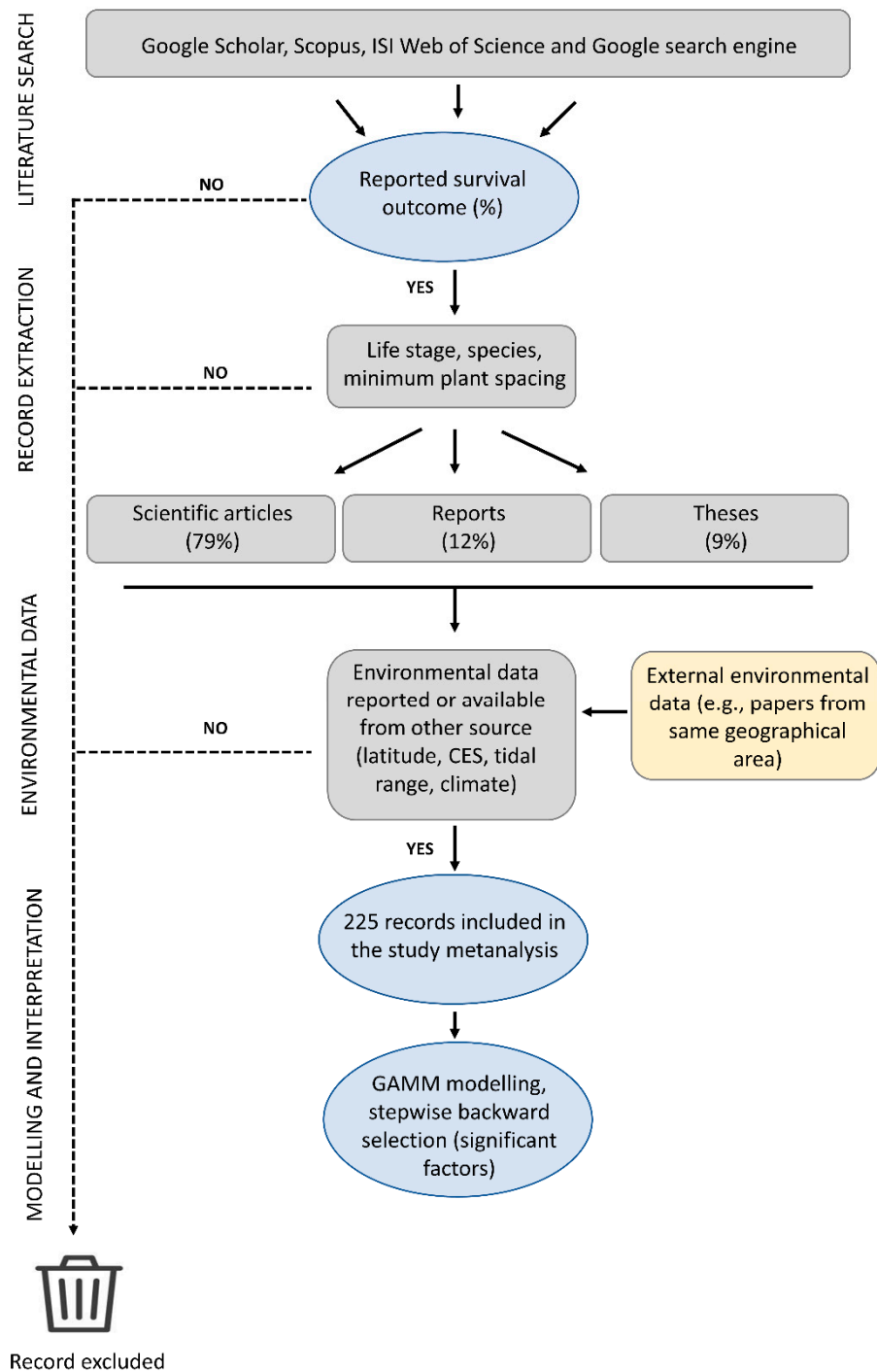


Figure S1. Selection and standardization of data used in the meta-analysis and subsequent interpretation of mangrove survival trends for mangrove species with different root morphologies

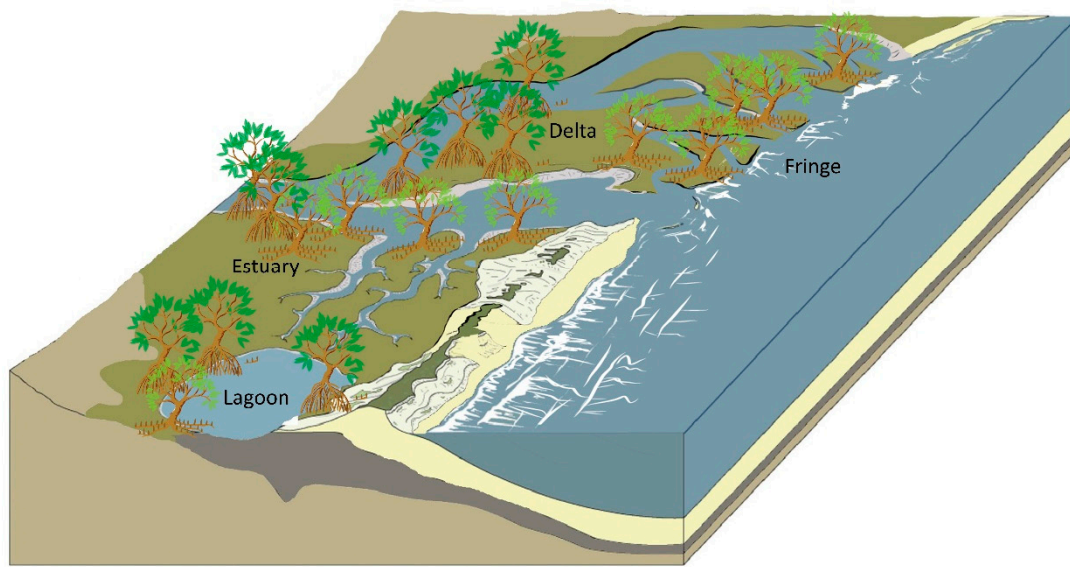


Figure S2. Spatial representation of different Coastal Environmental Settings (CES) used in analysis of survival of restored mangroves with different root morphologies.