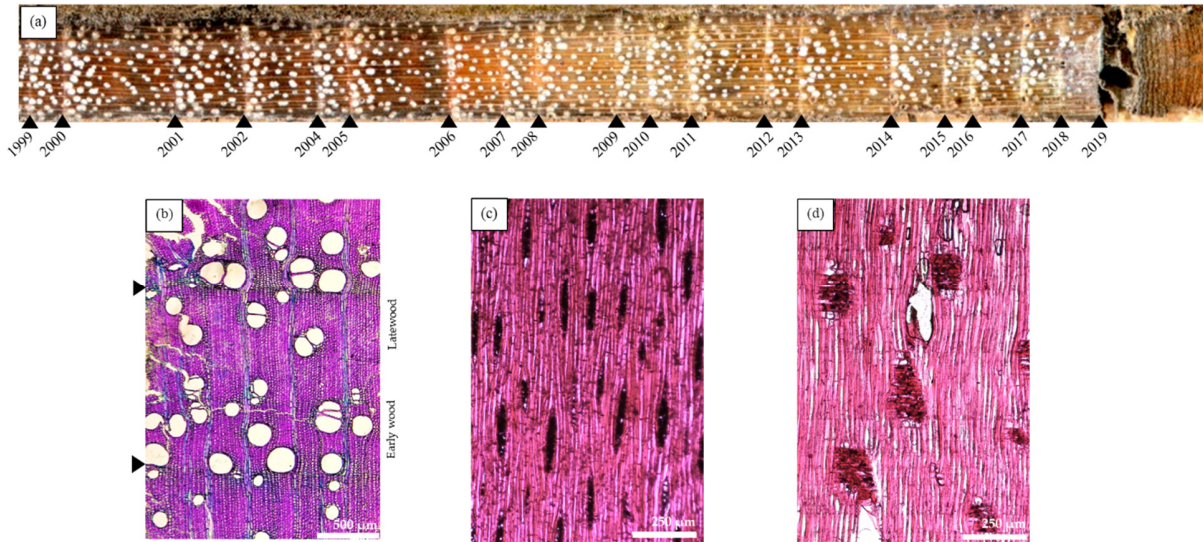
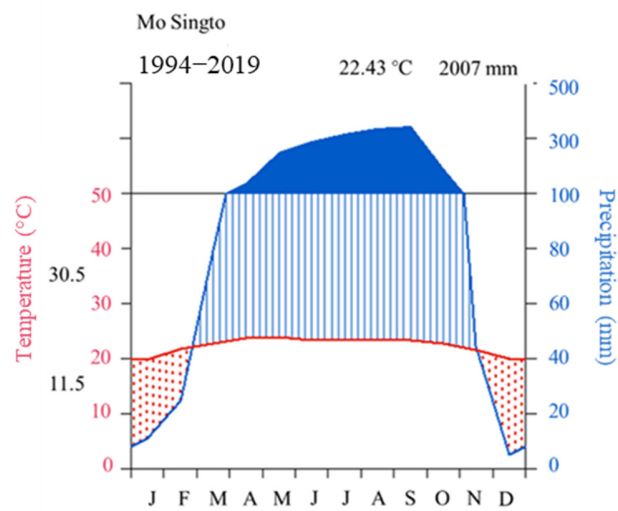


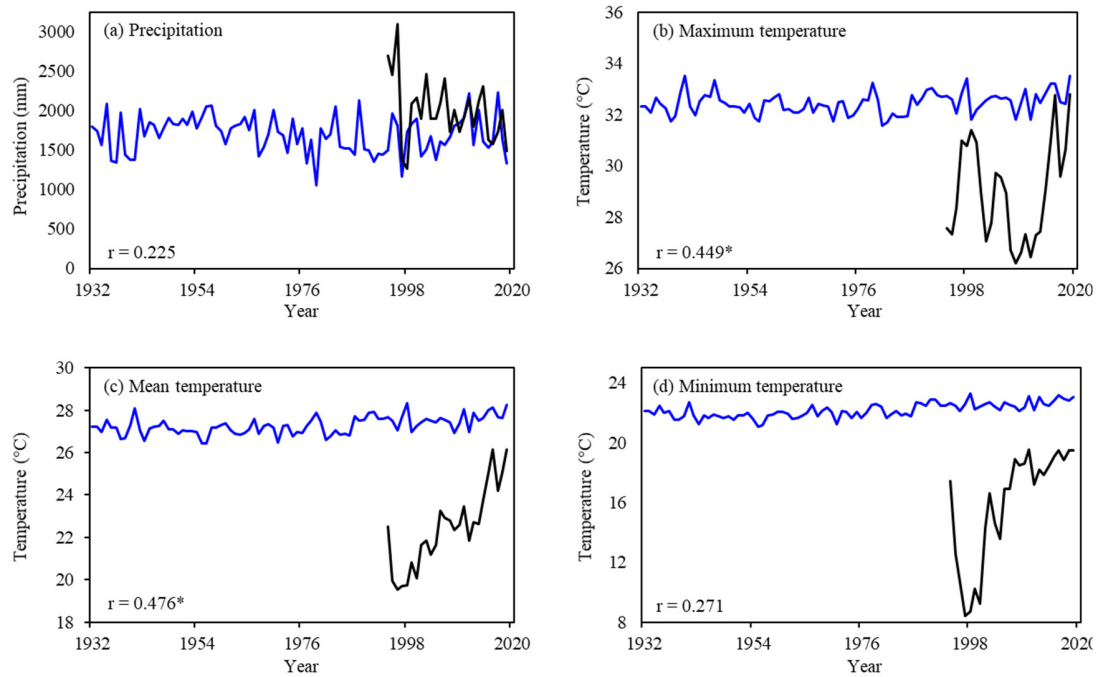
## Supplementary materials



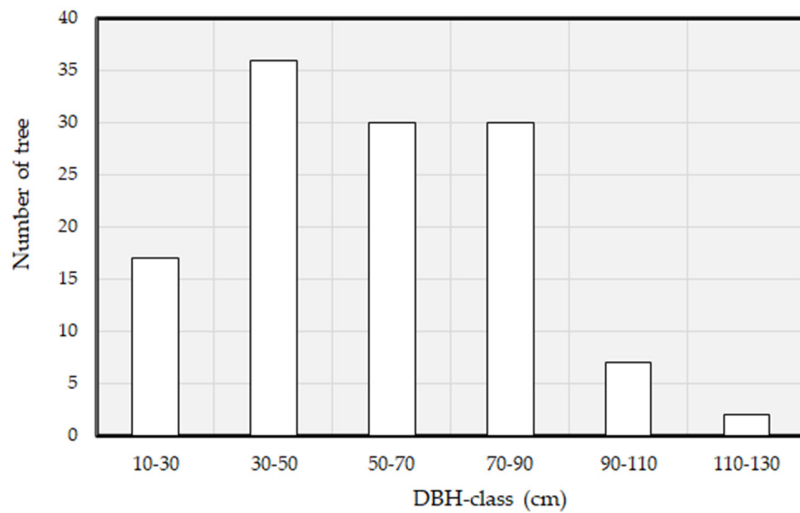
**Figure S1.** Scanned image (a) and microscopic images from different sides, cross section (b), tangential section (c) and radial section (d) of a wood core sample from *Choerospondias axillaris*. Black triangles indicate ring boundaries, while the year indicates calendar year of ring formation.



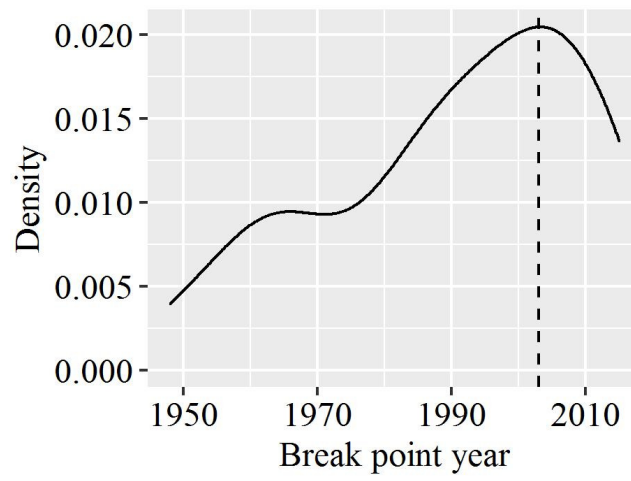
**Figure S2.** Walter & Lieth climate diagram of Mo Singto meteorological station for the period 1994 to 2019.



**Figure S3.** Comparison of temporal pattern in annual climate data between CRU (blue line, 1932 to 2019) and Mo Singto station (black line, 1994 to 2019): (a) Precipitation, (b) Maximum temperature, (c) Mean temperature, (d) Minimum temperature. 'r' indicates the correlation between CRU and Mo Singto climate for the period 1994 to 2019, and "\*" indicate the significant correlation at  $P < 0.05$ .



**Figure S4.** Number of sampling trees classified according to DBH class.



**Figure S5.** Density plot of break points for all individual trees of *Choerospondias axillaris*, calculated by the 'segmented' package in R. Dashed line indicated the highest frequent of break points in the year 2003.