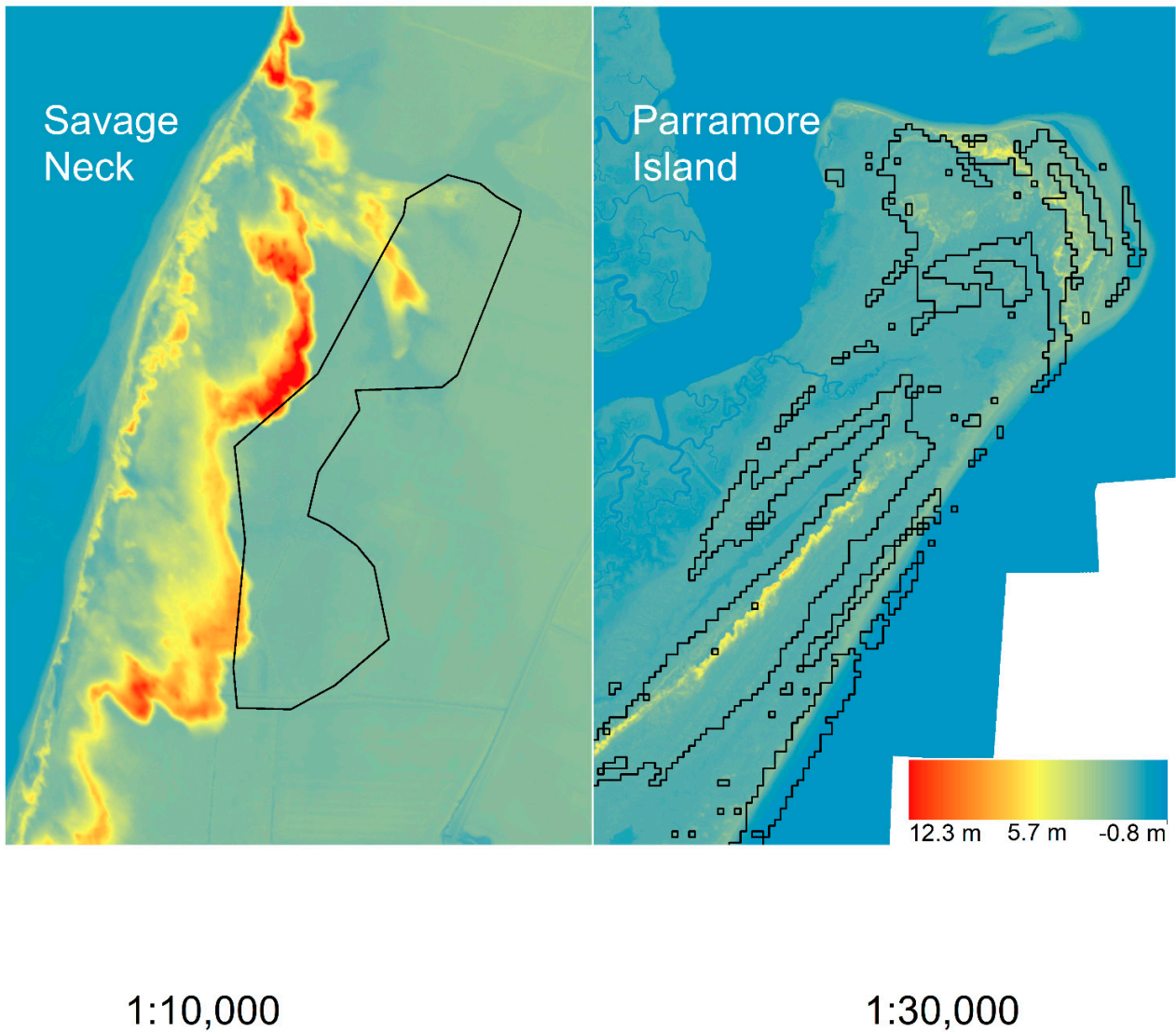


Supplementary Table 1: Point quarter plot summary table of the canopy layer of maritime forest Savage Neck. Dominant species for each year are indicated in bold based on importance value each year.

Species	Number		Relative Density		Basal Area (cm ²)		Relative Basal Area		Relative Frequency		Importance Value	
	2003	2018	2003	2018	2003	2018	2003	2018	2003	2018	2003	2018
<i>Liquidambar styraciflua</i>	319	176	29	18.5	146802	109264	25	16.7	24	25	78	60
<i>Acer rubrum</i>	254	272	23	28.7	158897	234295	27	35.8	20	23	70	87
<i>Pinus taeda</i>	231	238	21	25.1	170699	248911	29	38.1	20	21	70	84
<i>Ilex opaca</i>	94	162	9	17.1	9991	28311	2	4.3	11	17	21	38
<i>Prunus serotina</i>	69	6	6	0.6	20964	770	4	0.1	8	1	18	2
<i>Liriodendron tulipifera</i>	33	9	3	0.9	60842	6126	10	0.9	3	2	16	4
<i>Nyssa sylvatica</i>	51	70	5	7.4	14250	21483	2	3.3	7	9	14	19
<i>Quercus rubra</i>	16	3	1	0.3	4344	2573	1	0.4	2	0.4	4	1
<i>Cornus florida</i>	12	0	1	0	914	0	0.2	0	2	0	3	0
<i>Morus rubra</i>	7	1	1	0.1	919	138	0.2	0	1	2	2	2
<i>Sassafras albidum</i>	9	2	1	0.2	1048	341	0.2	0.1	1	0.3	2	1
<i>Quercus nigra</i>	4	1	0	0.1	1554	187	0.3	0	1	0	1	0.1
<i>Cercis canadensis</i>	2	0	0	0	151	0	0	0	0.3	0	0.5	0
<i>Juniperus virginiana</i>	2	3	0	0.3	136	312	0	0	0.3	0	0.5	0.4
<i>Carya tomentosa</i>	1	0	0	0	526	0	0.1	0	0.1	0	0.3	0
<i>Quercus stellata</i>	0	4	0	0.4	0	654	0	0.1	0	0.4	0	1
<i>Celtis occidentalis</i>	0	1	0	0.1	0	150	0	0	0	0	0	0.1
<i>Robinia pseudoacacia</i>	0	1	0	0.1	0	64	0	0	0	0	0	0.1
Total	1104	949	100	100	592035	653579	100	100	100	100	300	300

Supplementary Table 2: Fixed radial plot summary table of the canopy layer of maritime forest on Parramore Island, VA. Dominant species for each year are indicated in bold based on importance value each year.

Tree-Species	Number		Relative Density		Basal Area (cm ²)		Relative Basal Area		Relative Frequency		Importance Value	
	1997	2018	1997	2018	1997	2018	1997	2018	1997	2018	1997	2018
<i>Persea palustris</i>	418	52	46	13	5873	367	30	12	20	24	96	49
<i>Juniperus virginiana</i>	166	2	18	0	6015	44	32	1	20	7	70	8
<i>Morella cerifera</i>	181	283	20	69	3178	1865	16	59	22	28	58	156
<i>Pinus taeda</i>	33	56	4	14	2012	635	10	20	17	14	31	48
<i>Ilex opaca</i>	41	1	5	0	916	20	5	1	10	3	19	4
<i>Baccharis halmifolia</i>	53	19	6	4	1028	211	5	7	2	24	13	35
<i>Prunus serotina</i>	7	0	1	0	277	0	1	0	5	0	7	0
<i>Celtis laevigata</i>	4	0	0	0	183	0	1	0	2	0	3	0
<i>Zanthoxylum clava-herculis</i>	1	0	0	0	45	0	0	0	2	0	3	0
Total	904	413	100	100	19527	3142	100	100	100	100	300	300



Supplementary Figure 1. Digital elevation model of the two sites from the 2015 Eastern Shore, VA Lidar (<https://coast.noaa.gov>). Note the difference in scale between the two maps. The forested portion of Savage Neck Dunes is shown in black. On Parramore Island, black outline represents the 1998 woody vegetation class shown in Figure 4.