

SUPPLEMENTARY DATA

Phenotypic Variability and Differences in the Drought Response of Norway Spruce *Pendula* and *Pyramidalis* Half-sib Families

Marius BUDEANU, Ecaterina Nicoleta APOSTOL, Emanuel BESLIU, Vlad Emil CRIȘAN, Any Mary PETRITAN

Figure S1. Duncan's test for ring width (RW) and earlywood (EW) at the family level. Homogeneous groups (H. g.) for 5% transgression probability (α). Affiliation of families (1-24 = *pendula*; 25-48 = *pyramidalis*) to provenances: 1-3 and 25-27= provenance 1; 4-6 and 28-30= prov. 2; 7-9 and 31-33= prov. 3; 10-12 and 34-36= prov. 4; 13-15 and 37-39= prov. 5; 16-18 and 40-42= prov. 6; 19-21 and 43-45= prov. 7; 22-24 and 46-48= prov. 8.

Family RW (mm)			H.g. ($\alpha = 5\%$)	Family EW (mm)			H.g. ($\alpha = 5\%$)
31	6.094	*		31	4.988	*	
6	5.451	*	*	28	4.649	*	*
28	5.451	*	*	35	4.518	*	*
35	5.372	*	*	6	4.418	*	*
3	5.341	*	*	7	4.261	*	*
11	5.137	*	*	16	4.226	*	*
32	5.094	*	*	8	4.212	*	*
8	5.045	*	*	11	4.181	*	*
16	5.032	*	*	29	4.128	*	*
7	4.983	*	*	32	4.120	*	*
30	4.980	*	*	30	4.047	*	*
33	4.974	*	*	42	4.015	*	*
44	4.909	*	*	33	3.999	*	*
29	4.835	*	*	10	3.963	*	*
42	4.789	*	*	21	3.896	*	*
21	4.781	*	*	48	3.886	*	*
48	4.764	*	*	22	3.810	*	*
19	4.672	*	*	43	3.783	*	*
26	4.642	*	*	44	3.780	*	*
22	4.602	*	*	20	3.773	*	*
1	4.590	*	*	26	3.773	*	*
18	4.585	*	*	40	3.766	*	*
10	4.582	*	*	3	3.718	*	*
24	4.523	*	*	47	3.677	*	*
20	4.520	*	*	15	3.662	*	*
39	4.508	*	*	5	3.645	*	*
43	4.438	*	*	36	3.642	*	*
40	4.432	*	*	12	3.625	*	*
38	4.425	*	*	24	3.563	*	*
36	4.368	*	*	19	3.556	*	*
47	4.353	*	*	18	3.544	*	*
12	4.351	*	*	4	3.527	*	*
4	4.305	*	*	1	3.511	*	*
5	4.298	*	*	23	3.489	*	*
2	4.293	*	*	9	3.471	*	*
15	4.270	*	*	17	3.440	*	*
23	4.214	*	*	13	3.440	*	*
17	4.181	*	*	25	3.427	*	*
9	4.109	*	*	39	3.419	*	*
13	4.095	*	*	2	3.365	*	*
25	4.093	*	*	14	3.292	*	*
14	3.971	*	*	41	3.286	*	*
41	3.835	*	*	38	3.261	*	*
46	3.630	*	*	34	2.960	*	*
34	3.602	*	*	46	2.946	*	*
27	3.577	*	*	45	2.916	*	*
45	3.454	*	*	27	2.905	*	*
37	3.256	*	*	37	2.821	*	*

Figure S2. Duncan's test for latewood (LW) and latewood proportion (LWP) at the family level. Homogeneous groups (H. g.) for 5% transgression probability (α). Affiliation of families (1-24 = *pendula*; 25-48 = *pyramidalis*) to provenances as in figure S1.

Family	LW (mm)	H.g. ($\alpha = 5\%$)	Family	LWP (%)	H.g. ($\alpha = 5\%$)
3	1.624	*	3	29.7	*
38	1.164	*	38	26.3	* *
44	1.130	* *	1	24.8	* * *
19	1.116	* * *	39	24.4	* * * *
31	1.106	* * * *	19	23.9	* * * * *
39	1.090	* * * * *	18	22.8	* * * * *
1	1.079	* * * * * *	44	22.7	* * * * *
18	1.041	* * * * * *	2	21.6	* * * * * *
6	1.033	* * * * * *	24	21.4	* * * * * *
33	0.976	* * * * * *	33	19.6	* * * * * *
32	0.974	* * * * * *	21	19.5	* * * * * *
24	0.960	* * * * * *	46	19.1	* * * * * *
11	0.956	* * * * * *	6	19.0	* * * * * *
30	0.933	* * * * * *	27	18.9	* * * * * *
2	0.928	* * * * * *	32	18.9	* * * * * *
21	0.886	* * * * * *	26	18.9	* * * * * *
48	0.878	* * * * * *	30	18.7	* * * * * *
26	0.870	* * * * * *	11	18.6	* * * * * *
35	0.855	* * * * * *	48	18.5	* * * * * *
8	0.833	* * * * * *	31	18.3	* * * * * *
16	0.807	* * * * * *	4	18.0	* * * * * *
28	0.802	* * * * * *	34	17.9	* * * * * *
22	0.791	* * * * * *	17	17.7	* * * * * *
4	0.779	* * * * * *	22	17.6	* * * * * *
42	0.775	* * * * * *	23	17.2	* * * * * *
20	0.748	* * * * * *	14	17.2	* * * * * *
17	0.741	* * * * * *	36	17.1	* * * * *
12	0.726	* * * * * *	12	16.8	* * * * *
36	0.726	* * * * * *	8	16.7	* * * * *
23	0.725	* * * * * *	20	16.6	* * * * *
7	0.722	* * * * * *	25	16.4	* * * * *
29	0.707	* * * * * *	42	16.2	* * * * *
46	0.684	* * * * * *	16	16.1	* * * * *
14	0.679	* * * * * *	13	16.0	* * * * *
47	0.676	* * * * * *	35	16.0	* * * * *
27	0.673	* * * * * *	45	15.7	* * * *
40	0.667	* * * * * *	9	15.6	* * * *
25	0.667	* * * * * *	5	15.5	* * * *
13	0.656	* * * * * *	43	15.5	* * * *
43	0.655	* * * * * *	29	15.5	* * * *
5	0.653	* * * * * *	47	15.5	* * * *
34	0.642	* * * * * *	40	15.1	* * * *
9	0.637	* * * * * *	10	14.9	* * * *
10	0.619	* * * * *	28	14.8	* * * *
15	0.609	* * * *	41	14.5	* *
41	0.549	* *	7	14.5	* *
45	0.538	*	15	14.2	*
37	0.436	*	37	13.4	*

Figure S3. Five-year dynamics of ring width (RW) and latewood proportion (LWP).

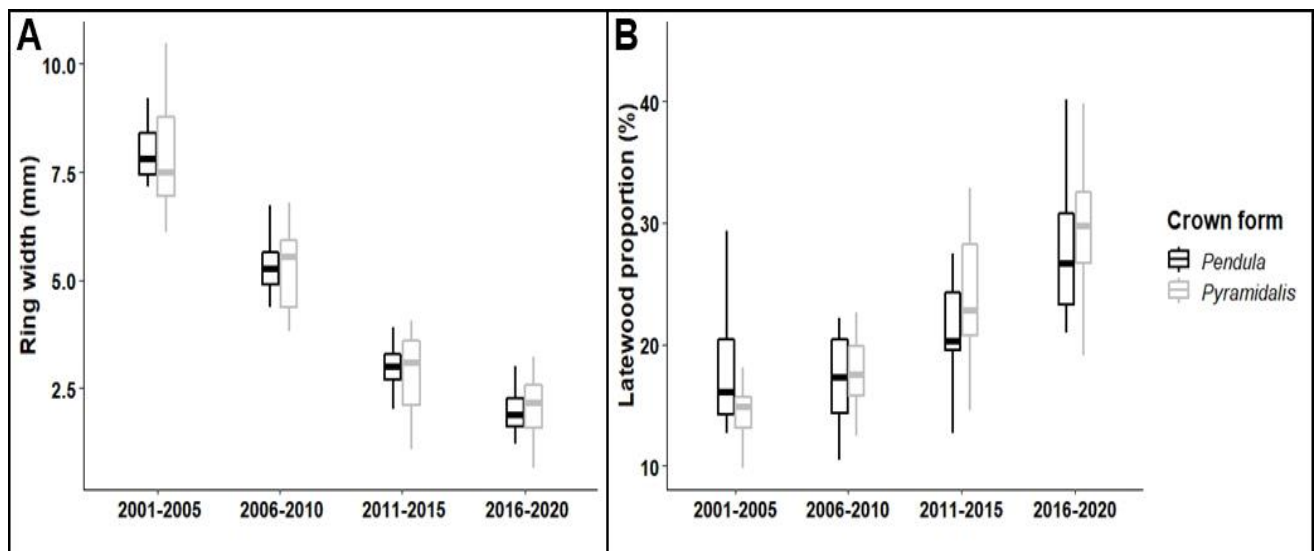


Figure S4. Monthly SPI index of the 2011-2012 drought period.

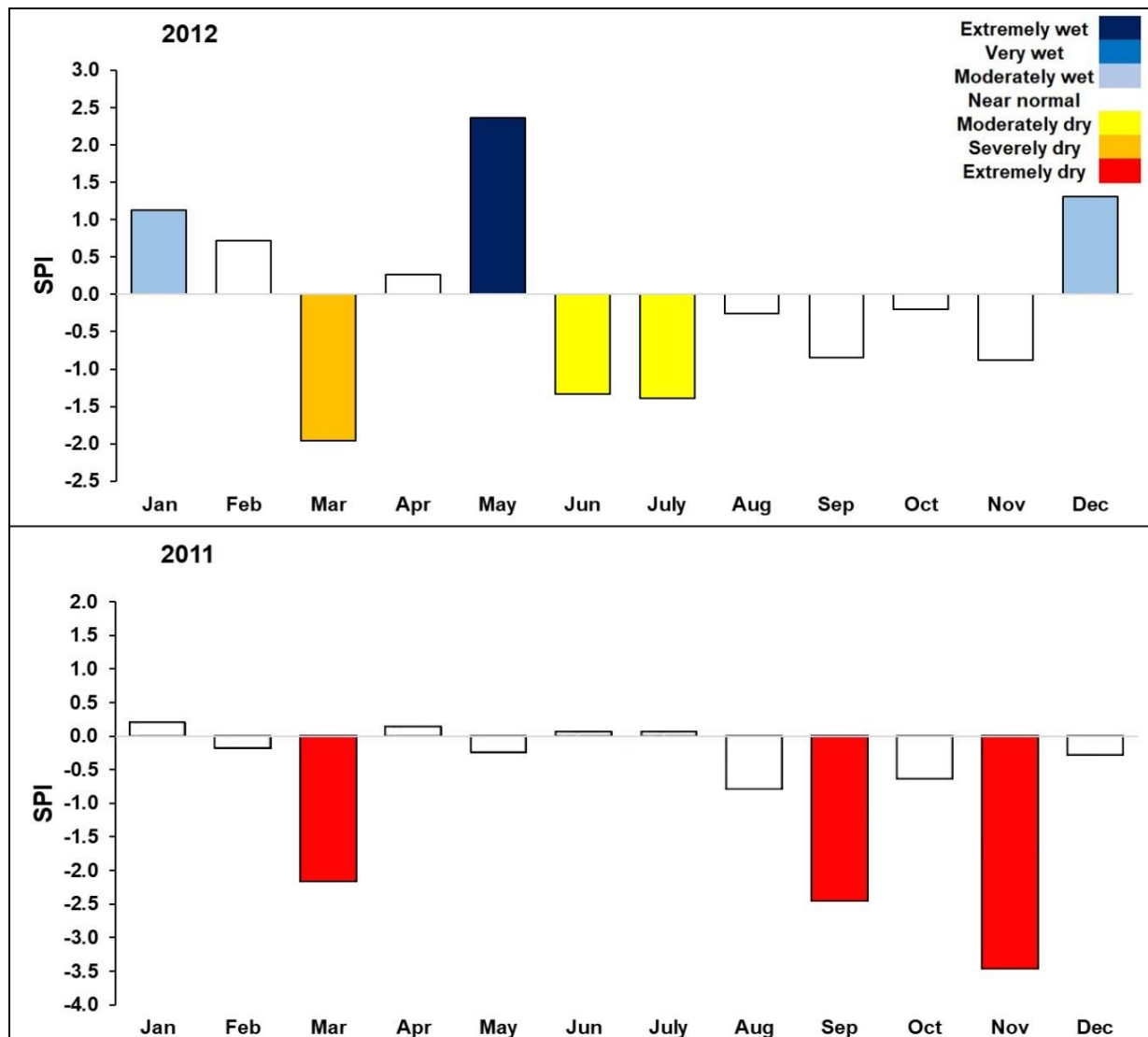


Figure S5. Resistance, recovery, and resilience of the two crown forms in each provenance.

