

Figure S1 Concentrations of  $\alpha$ -pinene and methyl salicylate in upward (red) and downward (blue) airstreams measured in June 2014 (n = 15).

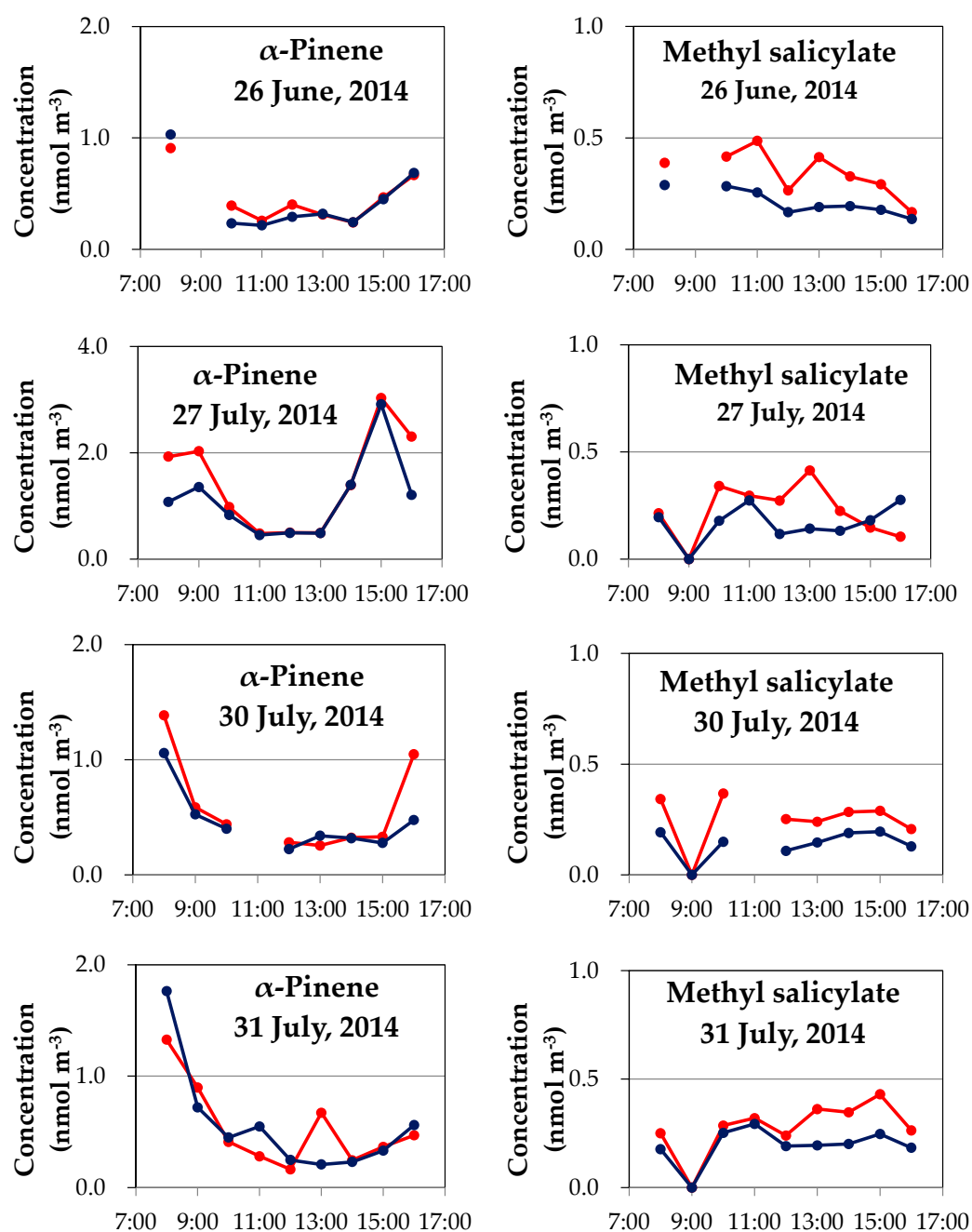


Figure S2 Concentrations of  $\alpha$ -pinene and methyl salicylate in upward (red) and downward (blue) airstreams measured in July 2014 (n = 34).

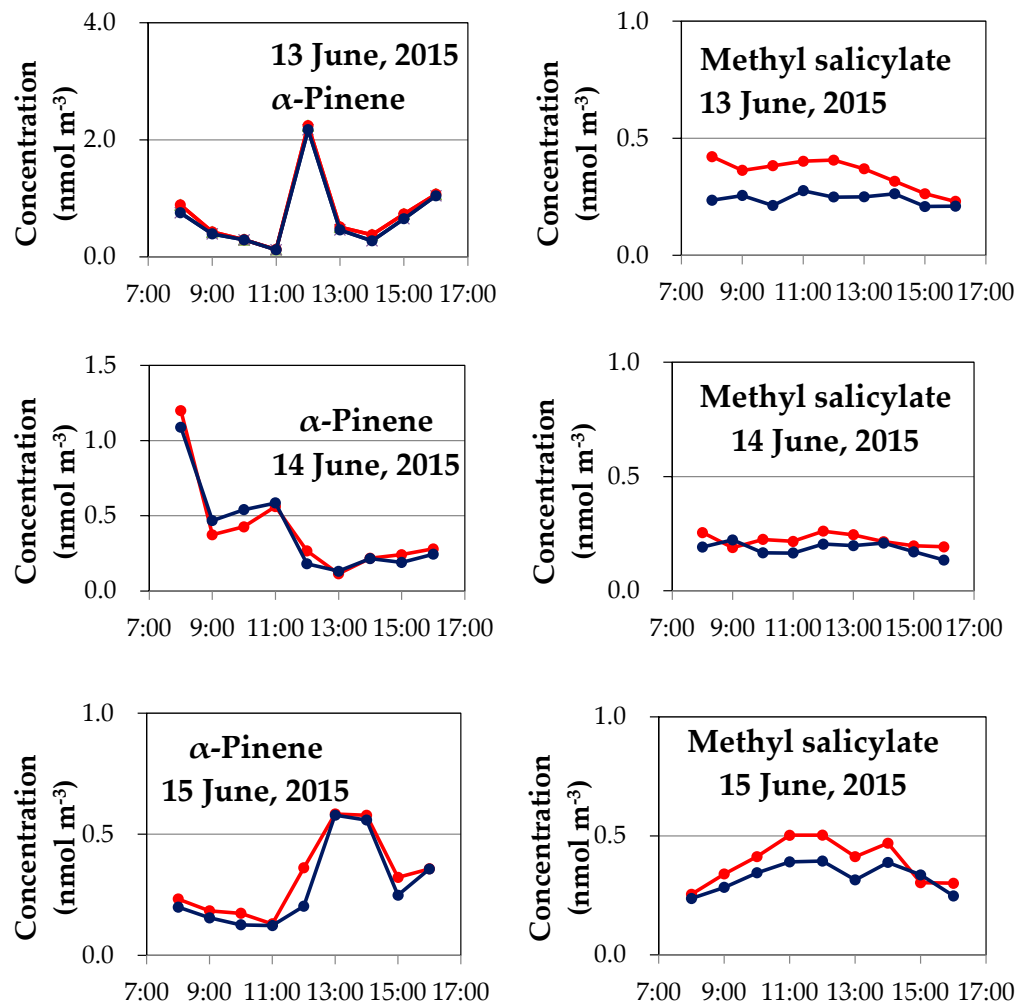


Figure S3 Concentrations of  $\alpha$ -pinene and methyl salicylate in upward (red) and downward (blue) airstreams measured in June 2015 (n = 27).

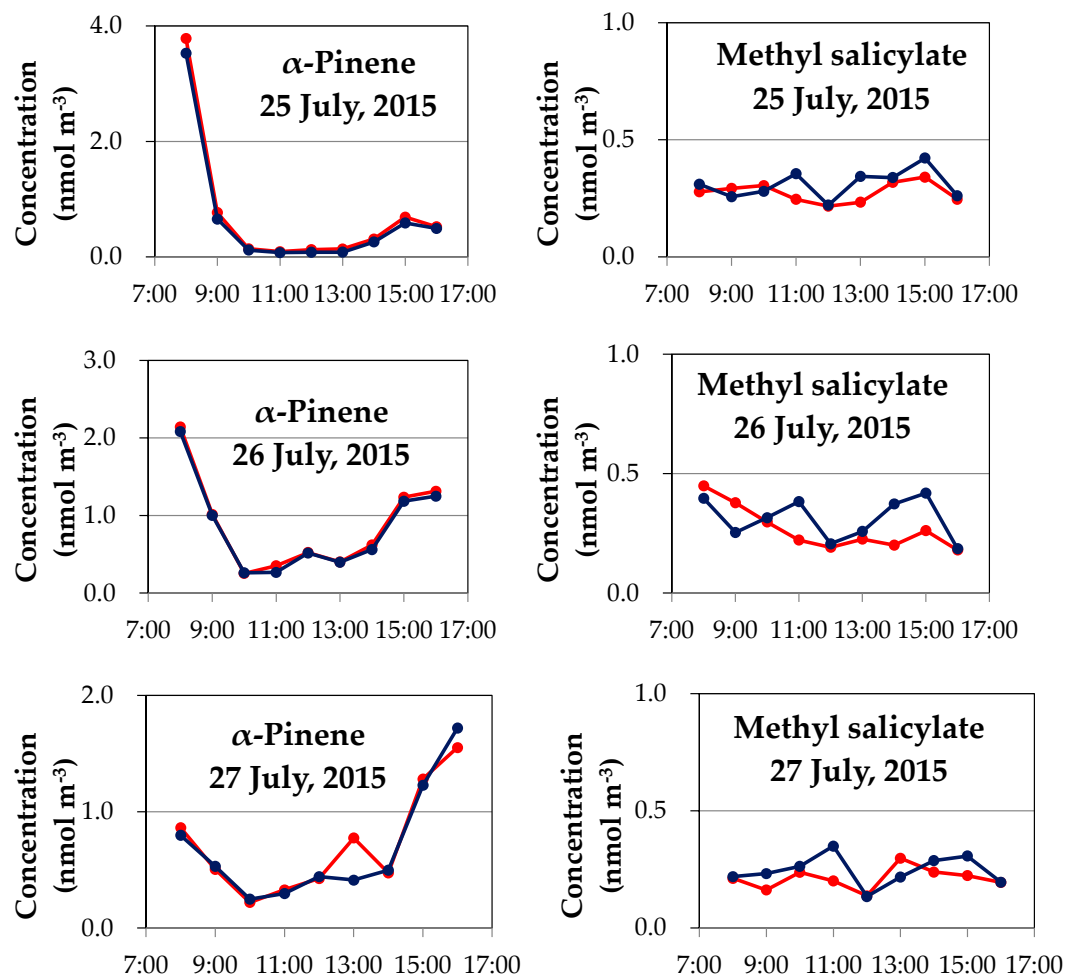


Figure S4 Concentrations of  $\alpha$ -pinene and methyl salicylate in upward (red) and downward (blue) airstreams measured in July 2015 (n = 27).