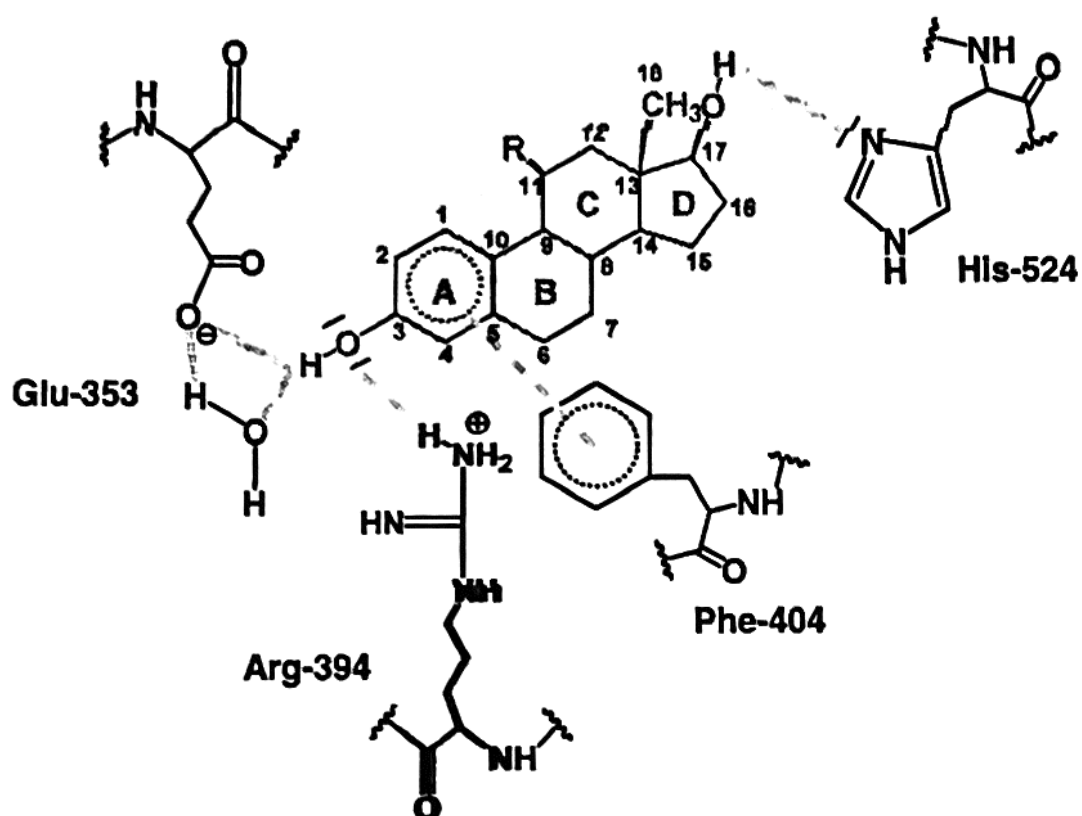


Supplement Materials

Suppl Mat. Figure S1

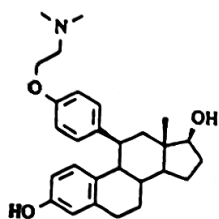


Estradiol / Estrogen Receptor α Complexion

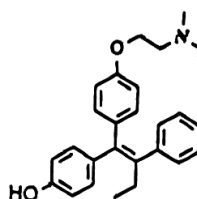
Stabilizing Interactions between residues of the receptor ligand binding pocket and chemical functions of the hormone

Suppl. Mat. Figure S2

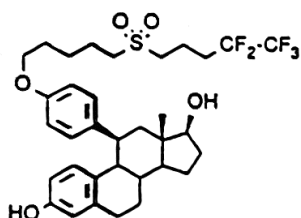
Illustration of the transformation of the SERM RU 39 411 (steroidal analog of Hydroxy -Tamoxifen) in the SERD RU58 668 by the substitution of its side-chain by an almost identical side-chain of 7 α -Fulvestrant



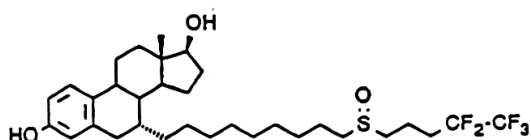
RU 39 411



HYDROXY-TAMOXIFEN



RU 58 668



7 α -Fulvestrant

Suppl. Mat. Table S1

Influence of 11 β - E₂ derivatives on MCF-7 cell proliferation

% Control

| (log Molarity) | E₂ | 11β -C₆H₁₃ | 11β -C₆F₁₃ | 11β-C₂H₄- C₄F₉ |
|-----------------------|----------------------|--|--|--|
| -11 | 459 16 * | 189 6 | 131 3 | 94 7 |
| - 10 | 533 9 | 380 13 | 320 11 | 89 4 |
| - 9 | 539 9 | 270 9 | 470 11 | 141 7 |
| - 8 | 523 16 | 188 3 | 461 23 | 97 4 |
| - 7 | 518 17 | 200 18 | 460 19 | 92 3 |

***= SD**

Proliferation assessment in 96 wells microtitration plates by a crystal violet procedure (3 days of culture)