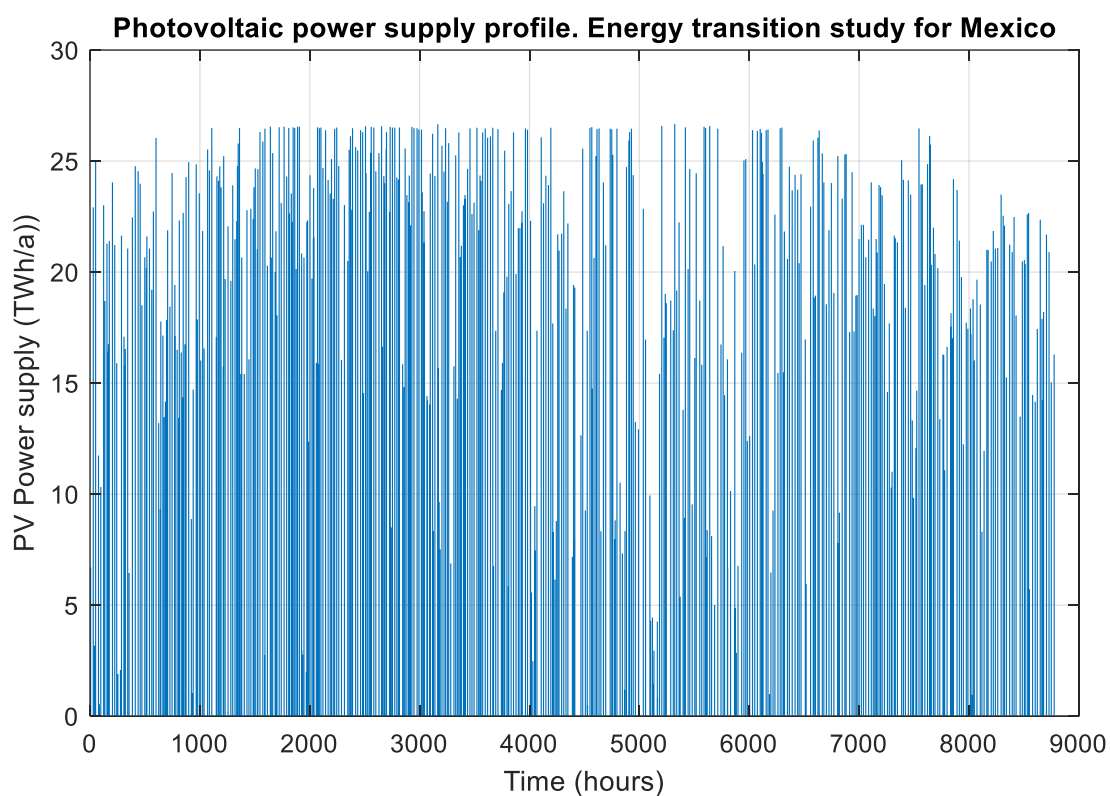
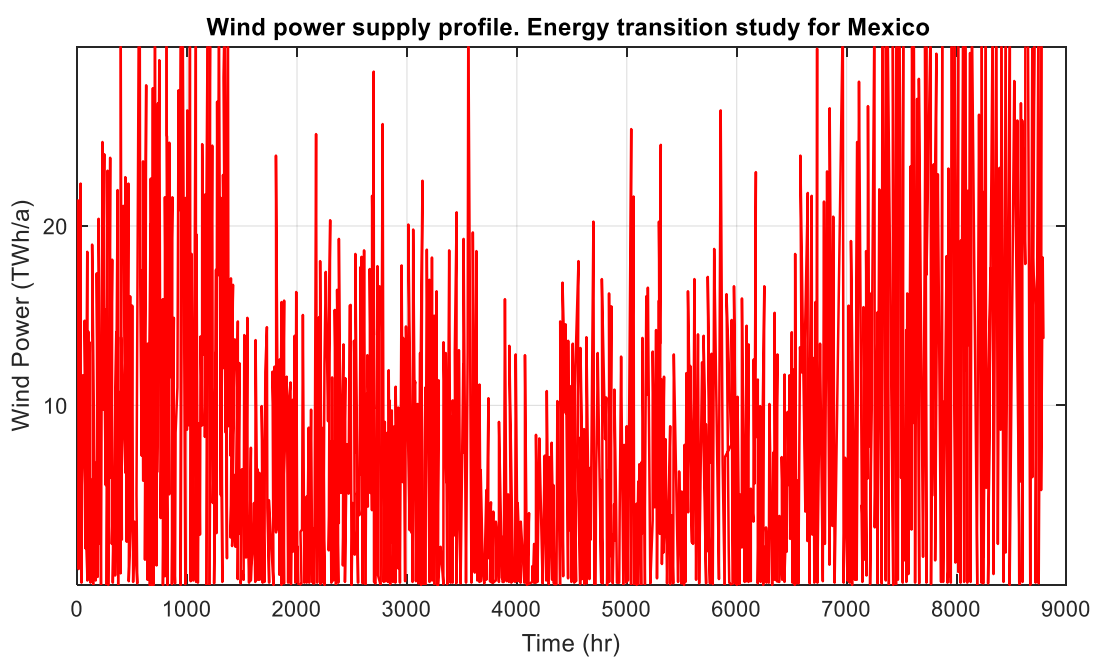


## Complementary material

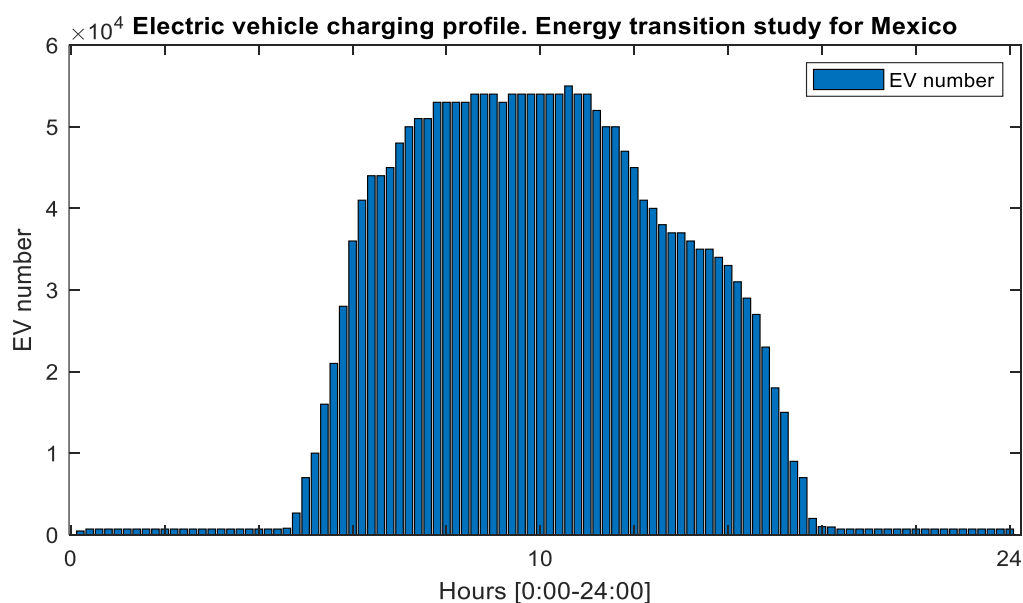
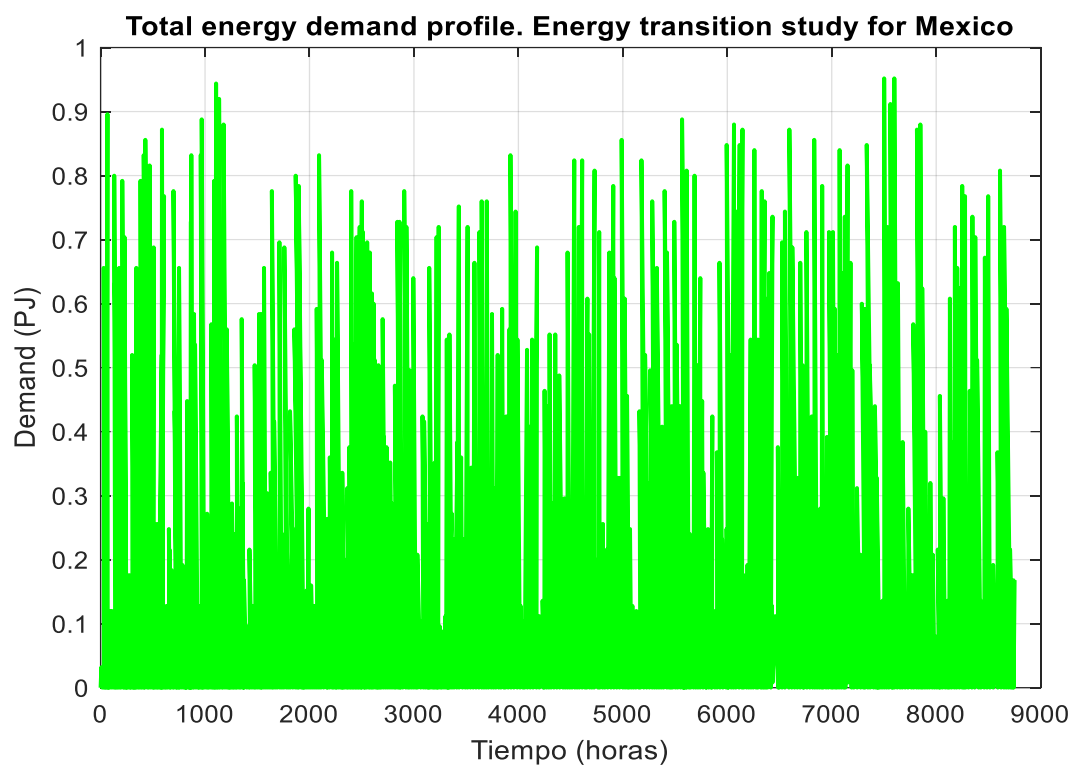
Below are the profiles of solar radiation, wind speed, energy demand, charging of electric vehicles referring to the base year in Mexico.



(a)



(b)



**Figure S1.** Profiles used in the Mexican analysis: (a) Supply of photovoltaic solar energy. (b) Wind power supply. (c) Power demand. (d) Charging electric vehicles.