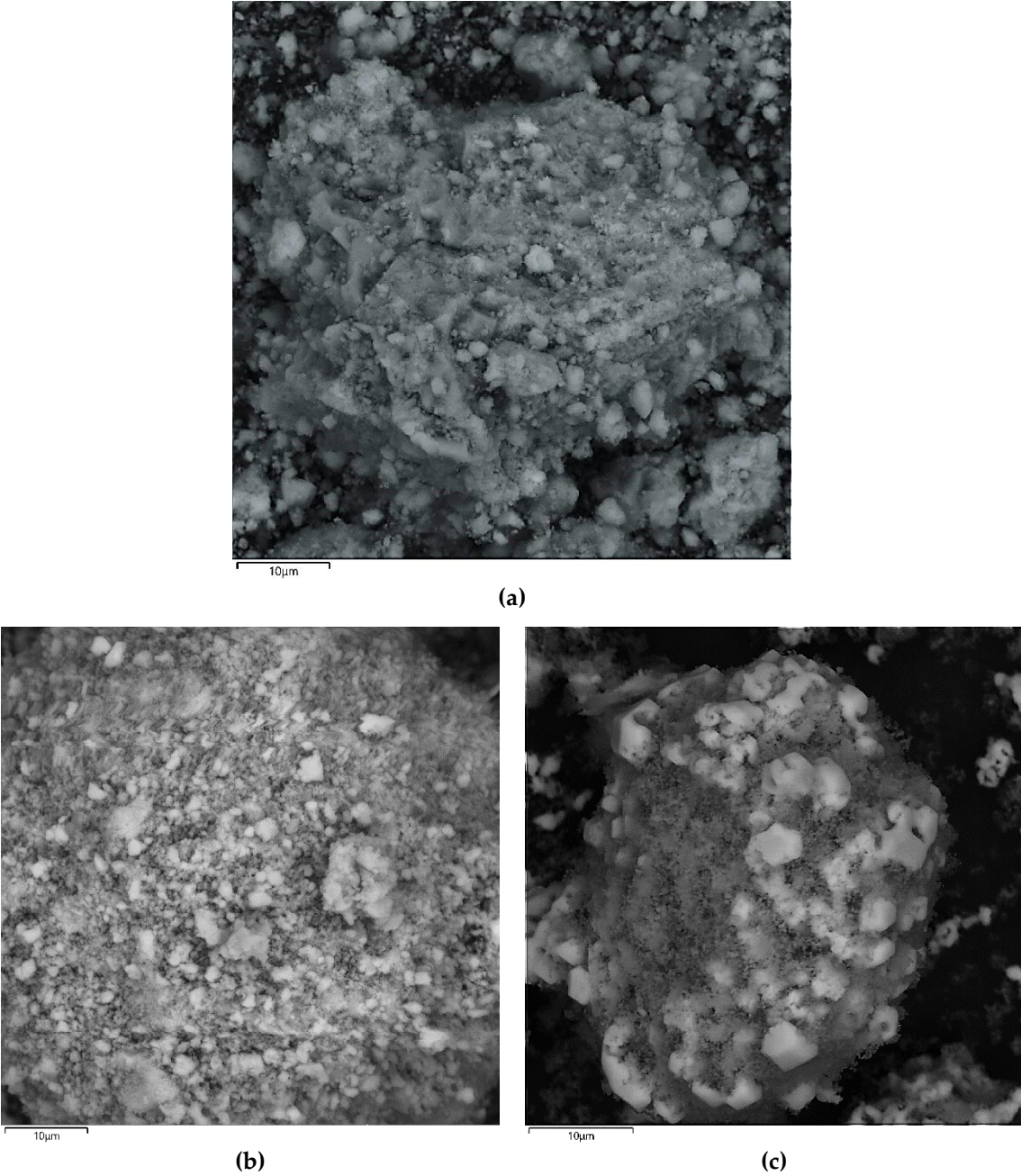


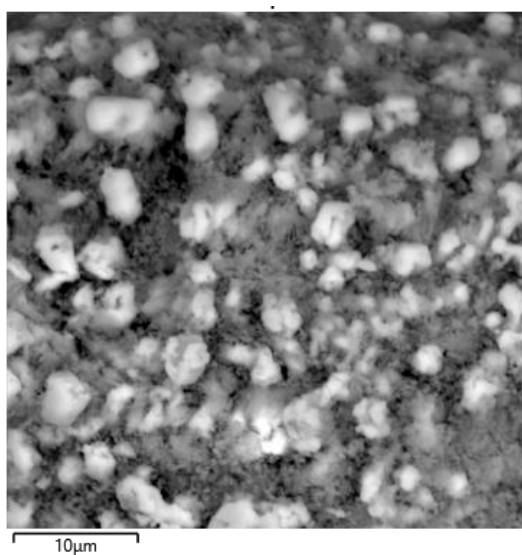
Supplementary Materials:



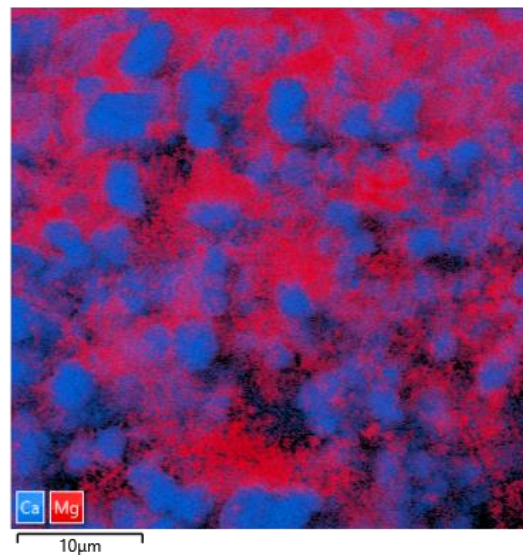
**Figure S1.** Scanning electron microscope (SEM) images of dolomite samples in backscattered electrons: initial **(a)**, calcined at 720 °C **(b)**, and calcined at 750 °C **(c)**.

**Table S1.** Average data of elemental composition (at%) of dolomite powder samples according to EDS date.

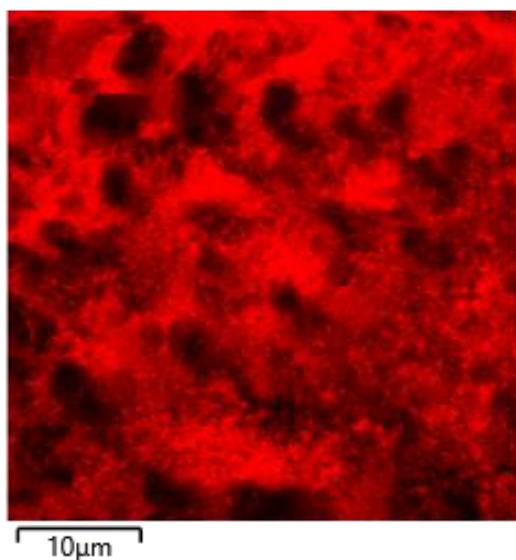
Element	Initial (Figure S1a)		Calcined at 720 °C (Figure S1b)		Calcined at 750 °C (Figure S1c)	
	White phase	Gray phase	White phase	Gray phase	White phase	Gray phase
Mg	23.91	33.45	26.25	30.94	13.69	36.89
Ca	26.09	16.55	23.75	19.06	36.31	13.06
O	50.00	50.00	50.01	50.00	50.00	50.05



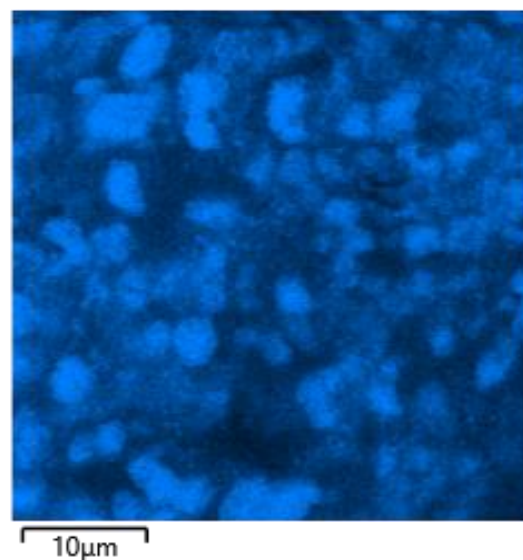
(a)



(b)



(c)



(d)

**Figure S2.** SEM image (a) and multilayer image (b) of the dolomite sample calcined at 750 °C with elemental distribution maps of magnesium (c) and calcium (d) in sample.