

Case Report

The Onset of Subtalar Joint Monoarthritis in a Patient with Rheumatoid Arthritis

Hiroki Wakabayashi ^{*,†}, Kenta Nakata [†], Akinobu Nishimura [†], Masahiro Hasegawa and Akihiro Sudo

Department of Orthopedic Surgery, Mie University Graduate School of Medicine, Tsu 514-8507, Japan

* Correspondence: whiroki@clin.medic.mie-u.ac.jp; Tel.: +81-59-231-5022

† These authors contributed equally to this work.

Supplementary Materials

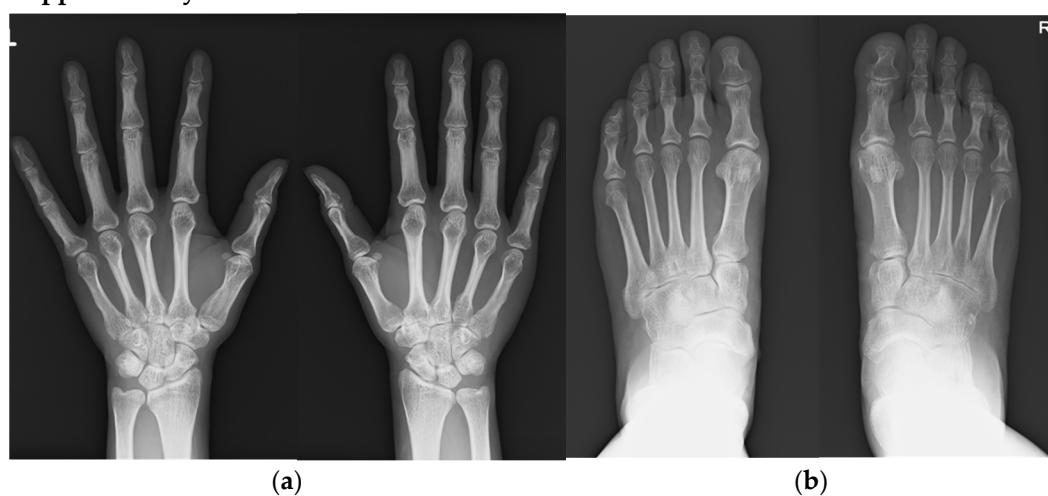


Figure S1. The plain radiographs of her hands (a) and foot (b).