

Precision of a hand-held 3D surface scanner in dry and wet skeletal surfaces: an ex vivo study

Jannis Probst, Konstantinos Dritsas, Demetrios Halazonetis, Yijin Ren, Christos Katsaros, Nikolaos Gkantidis

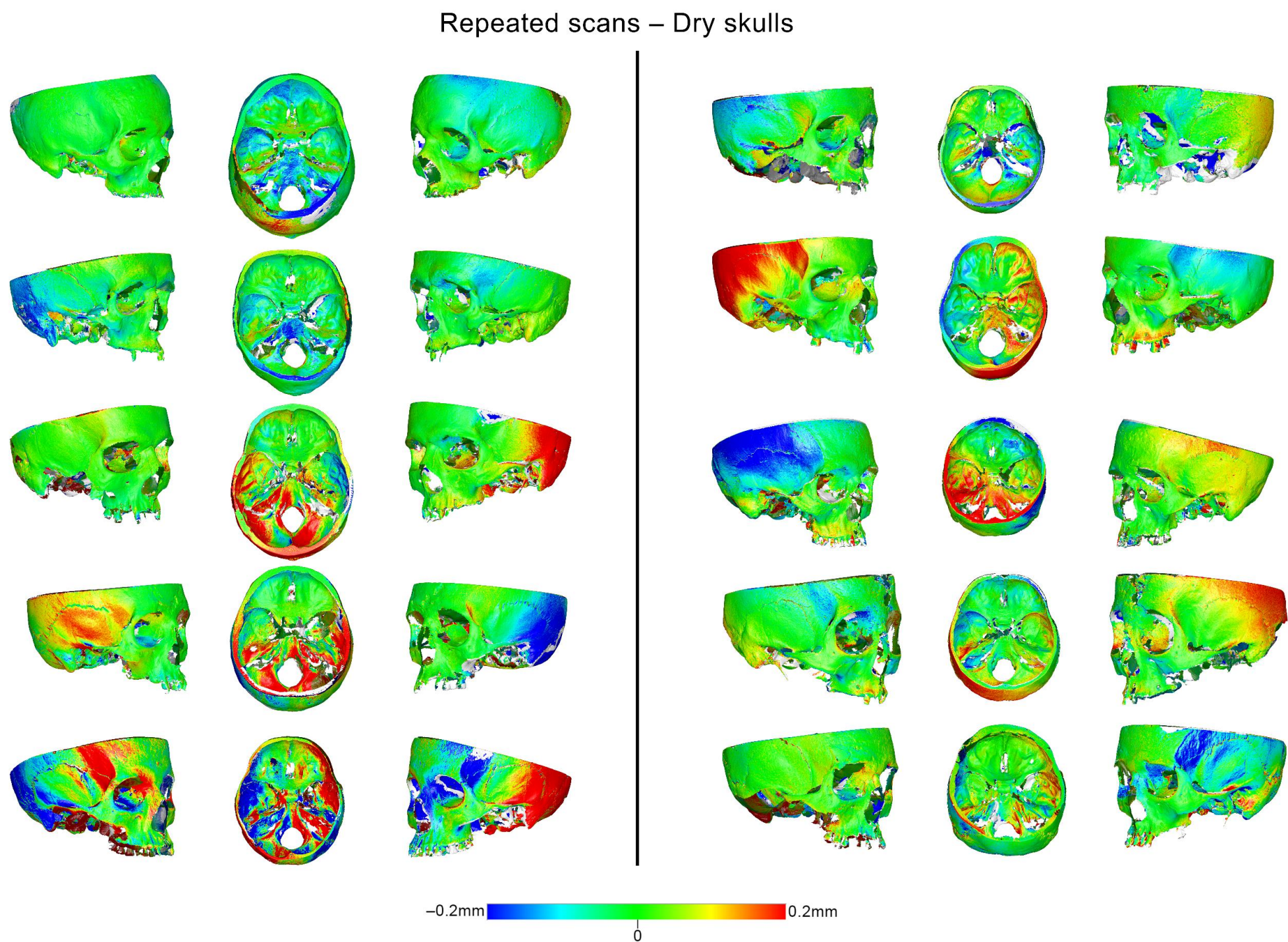
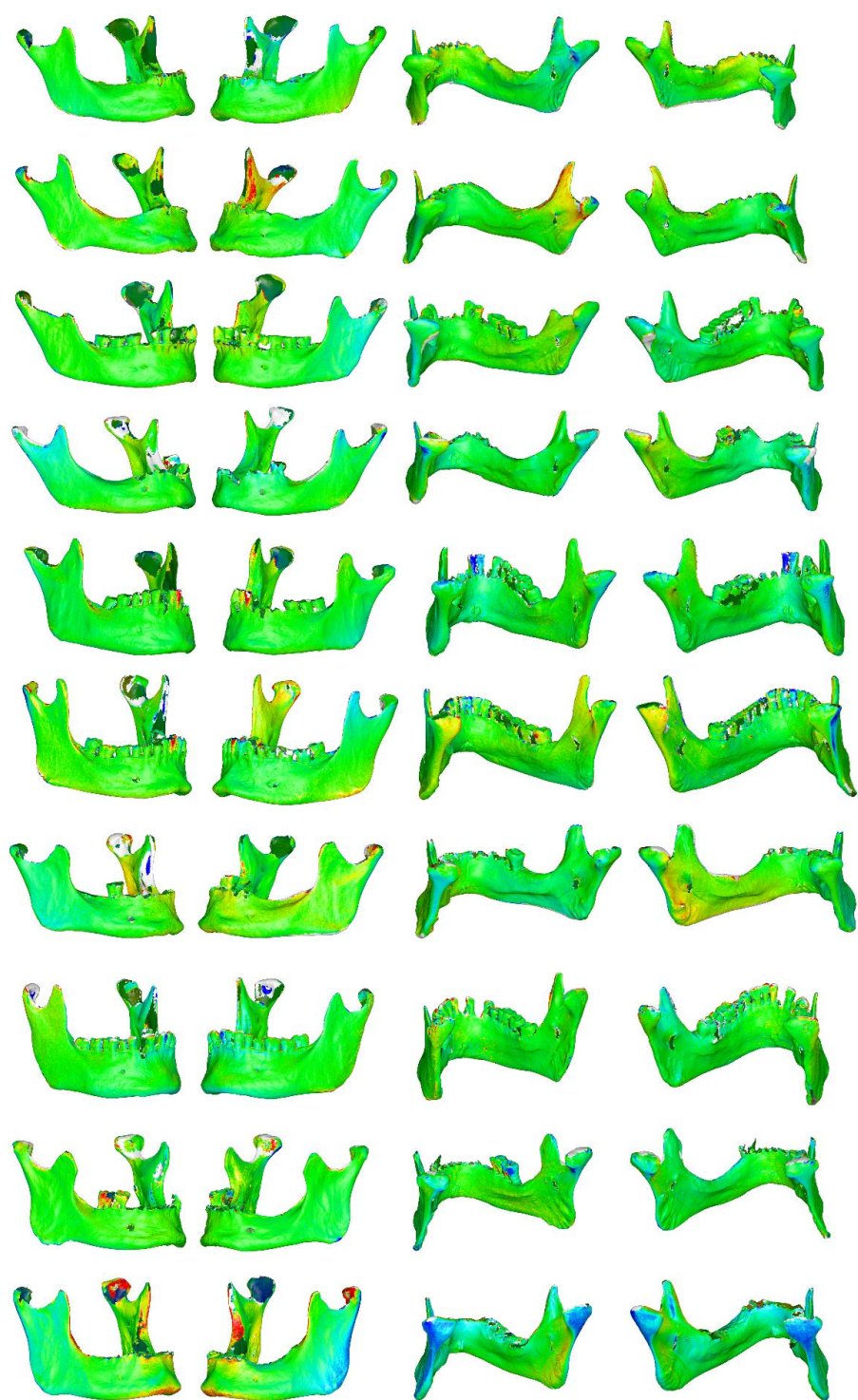


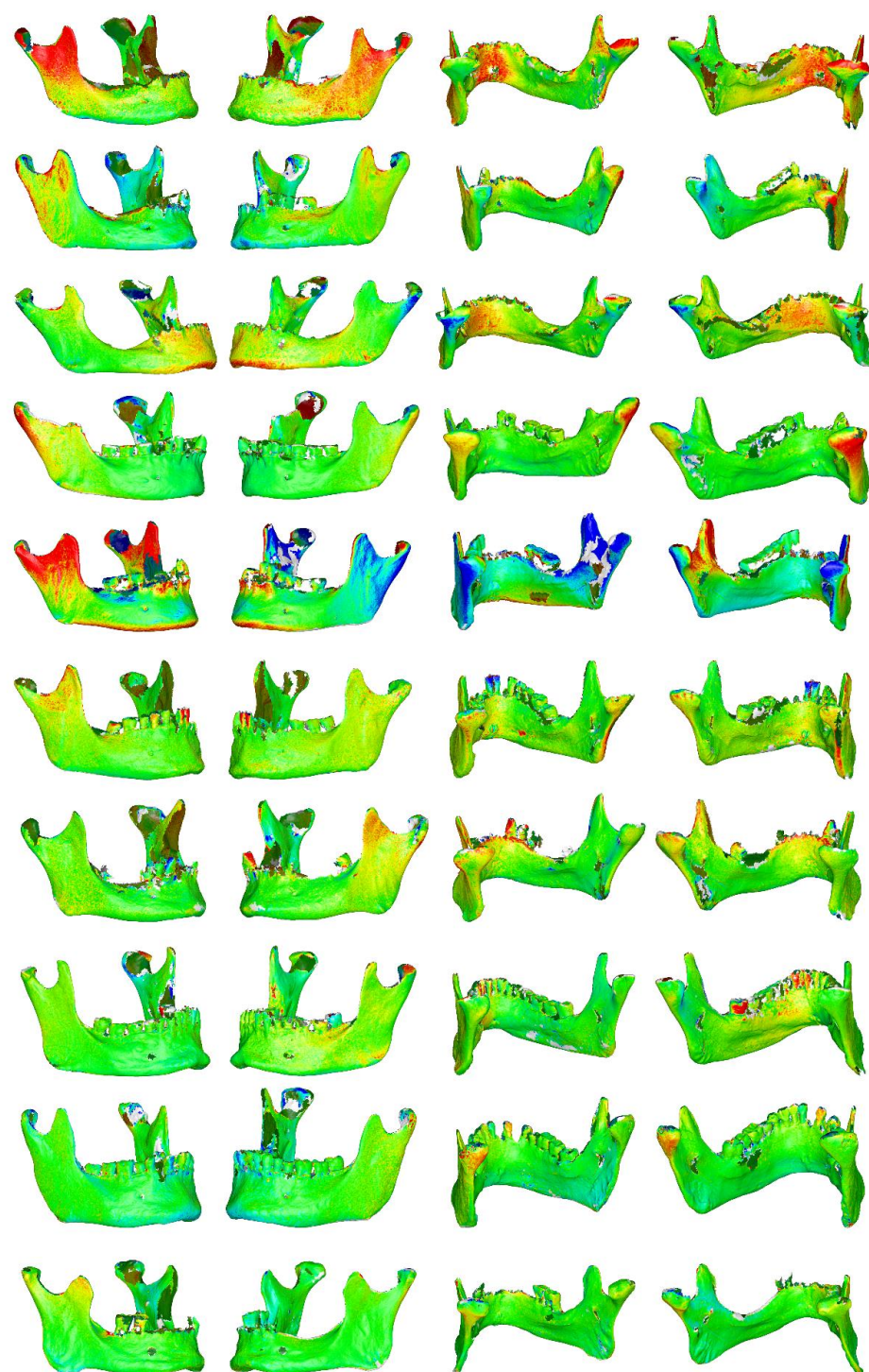
Figure S1. Color coded distance maps of best-fit superimpositions between repeated scans of 10 dry skulls. Three skull views in a row per side correspond to a single specimen.

Repeated scans – Dry mandibles



-0.2mm 0 0.2mm

Repeated scans – Wet mandibles



-0.2mm 0 0.2mm

Figure S2. Color coded distance maps of best-fit superimpositions between repeated scans of 10 dry and 10 wet mandibles. Four mandibular views in a row per side correspond to a single specimen.

Repeated model generation (same scan) - Dry skulls

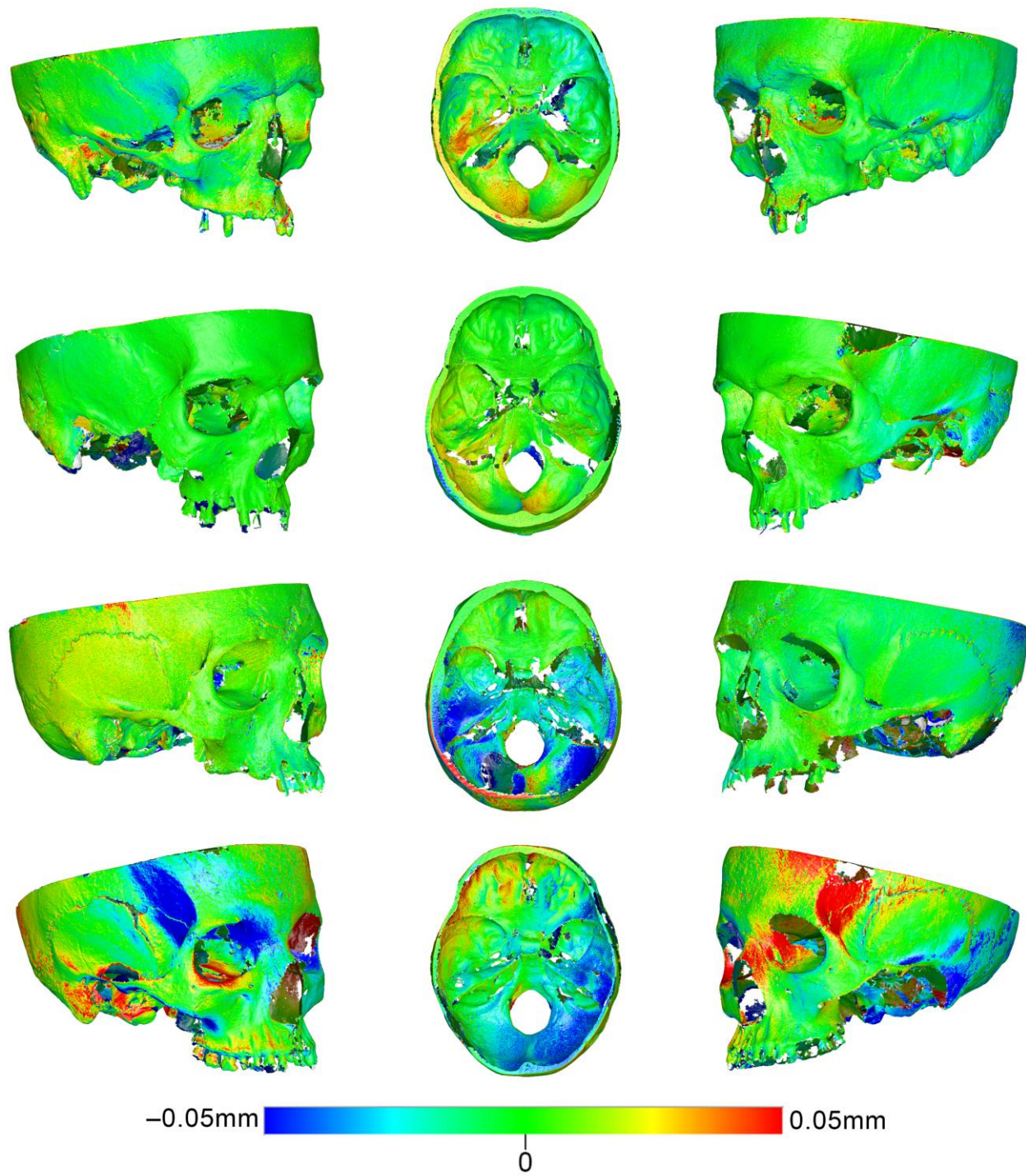
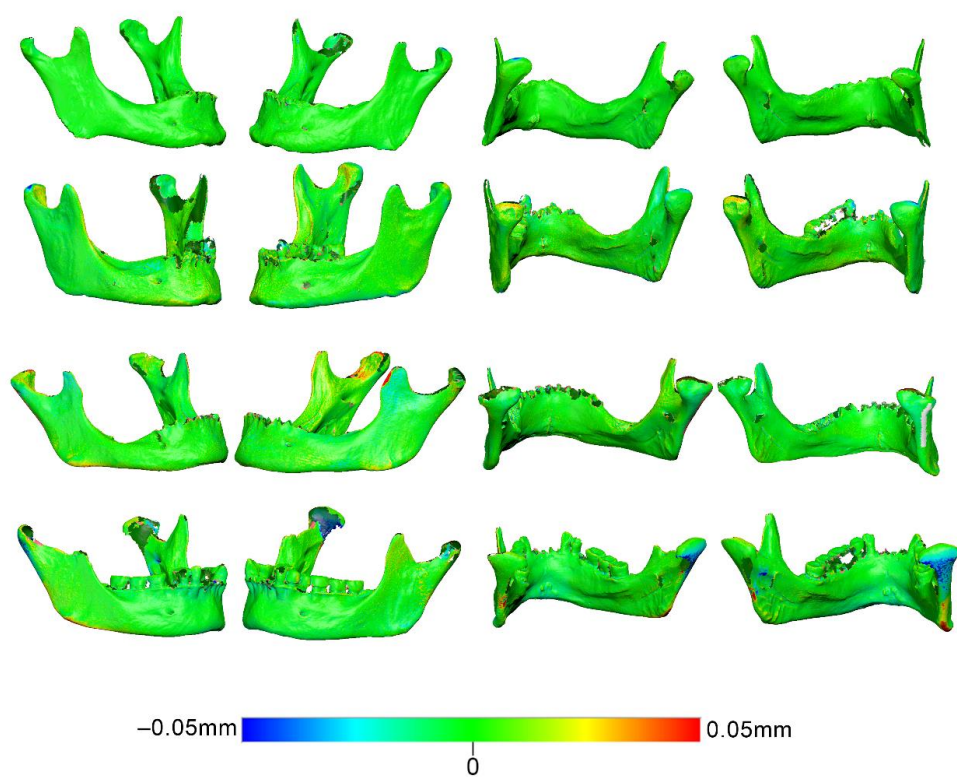


Figure S3. Color coded distance maps of best-fit superimpositions of repeated model generations of the same scan for 4 dry skulls. Three skull views in a row per side correspond to a single specimen.

Repeated model generation (same scan) - Dry mandibles



Repeated model generation (same scan) - Wet mandibles

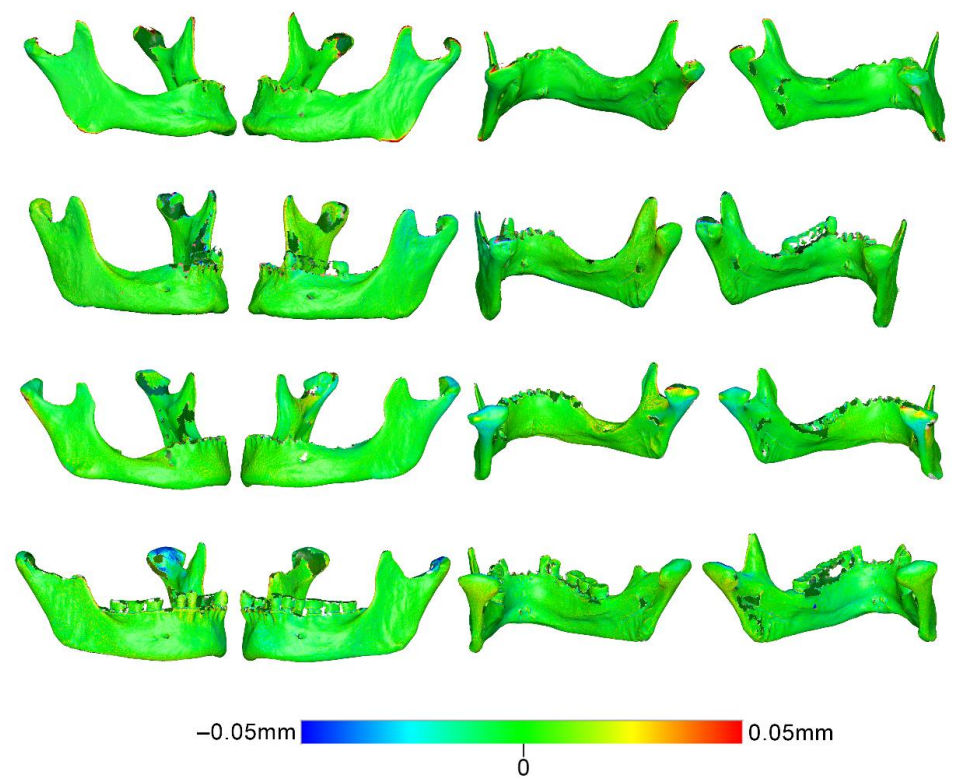


Figure S4. Color coded distance maps of best-fit superimpositions of repeated model generations of the same scan for 4 dry and 4 wet mandibles. Four mandibular views in a row per side correspond to a single specimen.