

Supplementary material

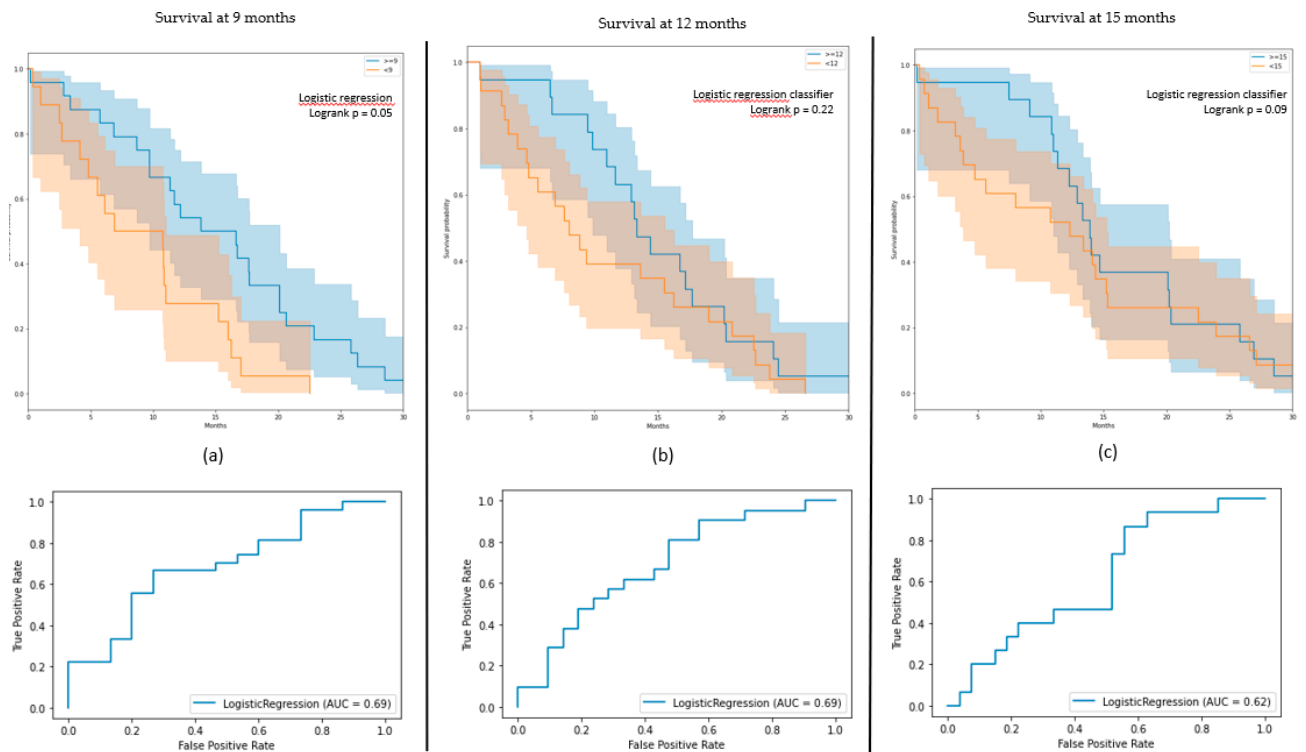


Figure S1. (a–c) Kaplan–Meier curves of the results on the test-sets for the 9-, 12-, and 15-month models using the age as the only feature; (d–f) receiver operating characteristic (ROC) curves of the results on the test-sets for the 9-, 12-, and 15-months models using the age as the only feature.

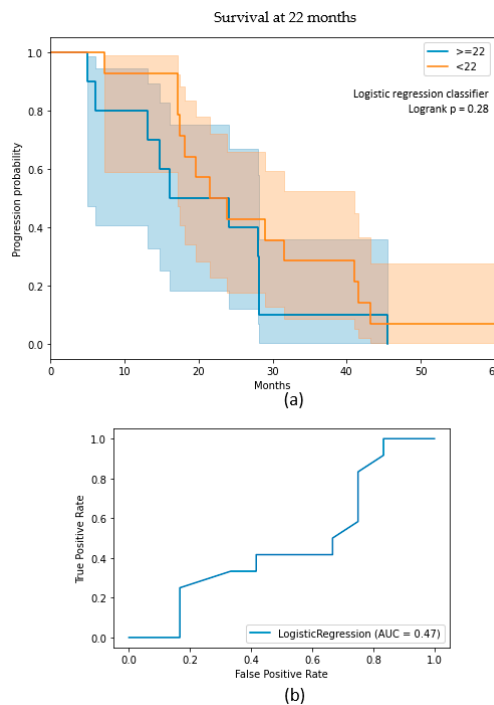


Figure S2. (a) Kaplan–Meier curve of the results on the test-set for the 22-months model using the age as the only feature; (b) receiver operating characteristic (ROC) curve of the results on the test-set for 22-months model using the age as the only feature.