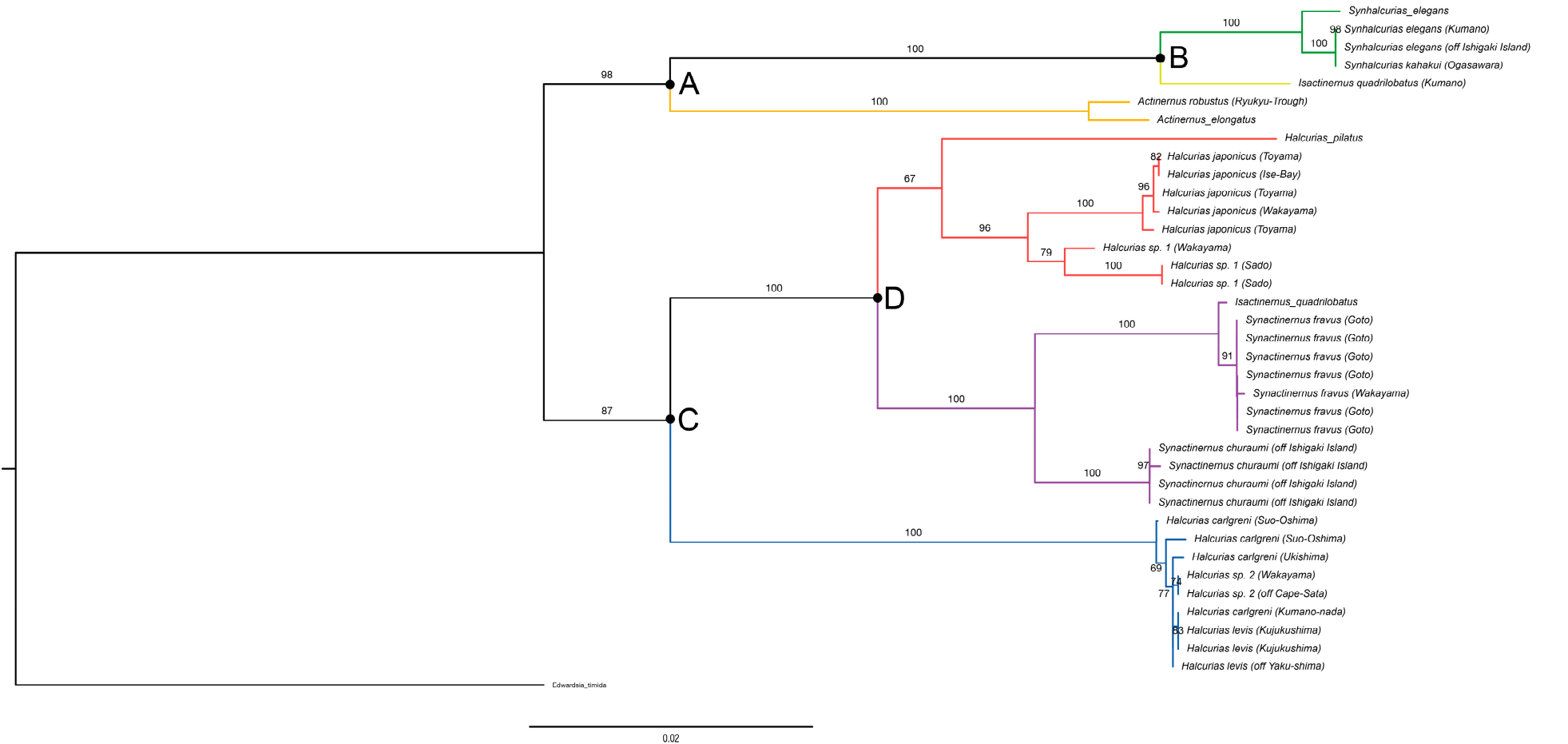
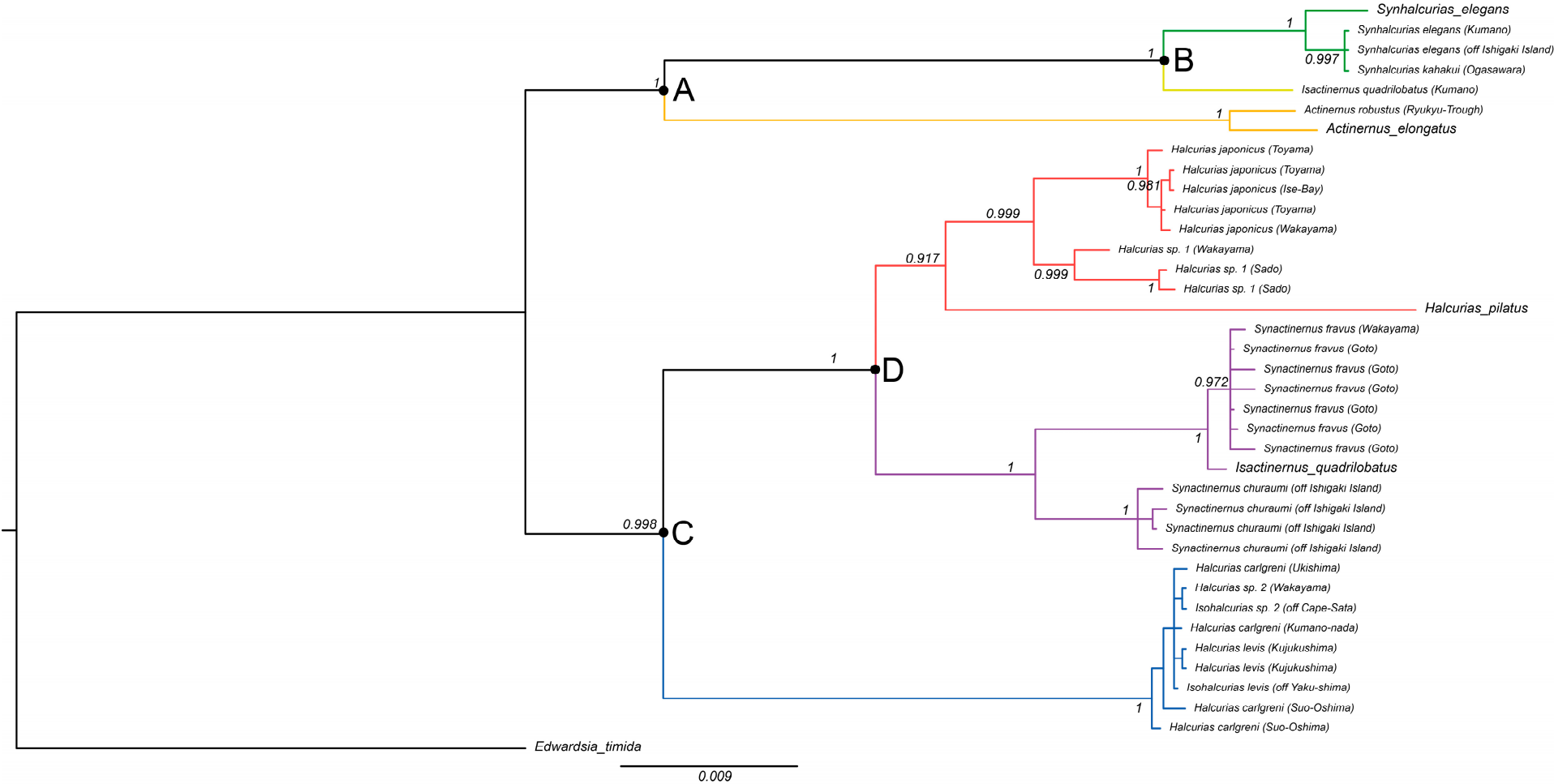


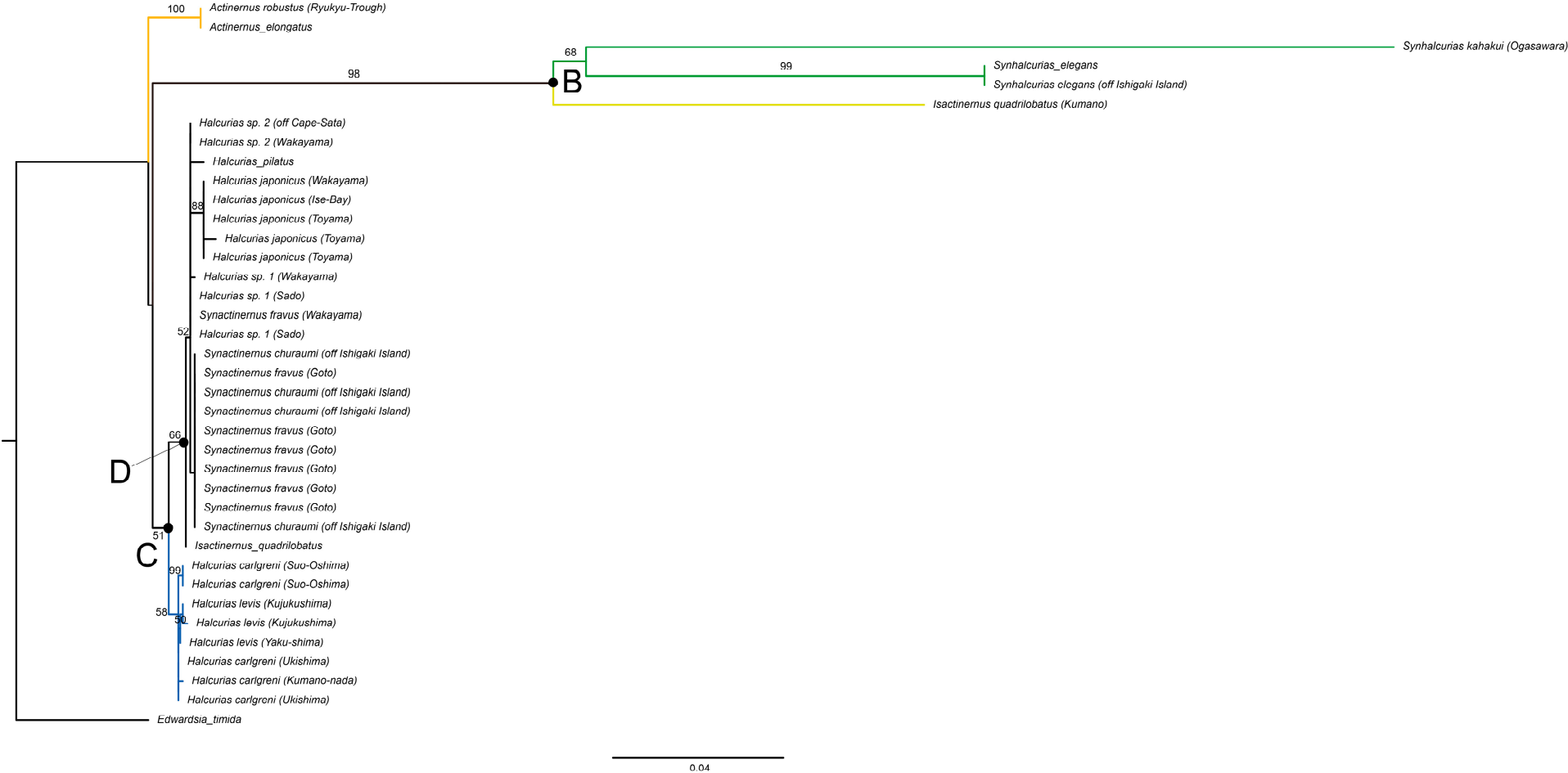
**Figure S1:** Maximum likelihood tree of the superfamily Actinernoidea based on the combined dataset of nuclear 18S, 28S, and 5.8S rDNA; and ITS1/ITS2.



**Figure S2:** Bayesian tree of the superfamily Actinernoidea based on the combined dataset of nuclear 18S, 28S, and 5.8S rDNA; and ITS1/ITS2.



**Figure S3:** Maximum likelihood tree of the superfamily Actinernoidea based on the combined dataset of mitochondrial 12S and 16S.



**Figure S4:** Bayesian tree of the superfamily Actinernoidea based on the combined dataset of mitochondrial 12S and 16S.

