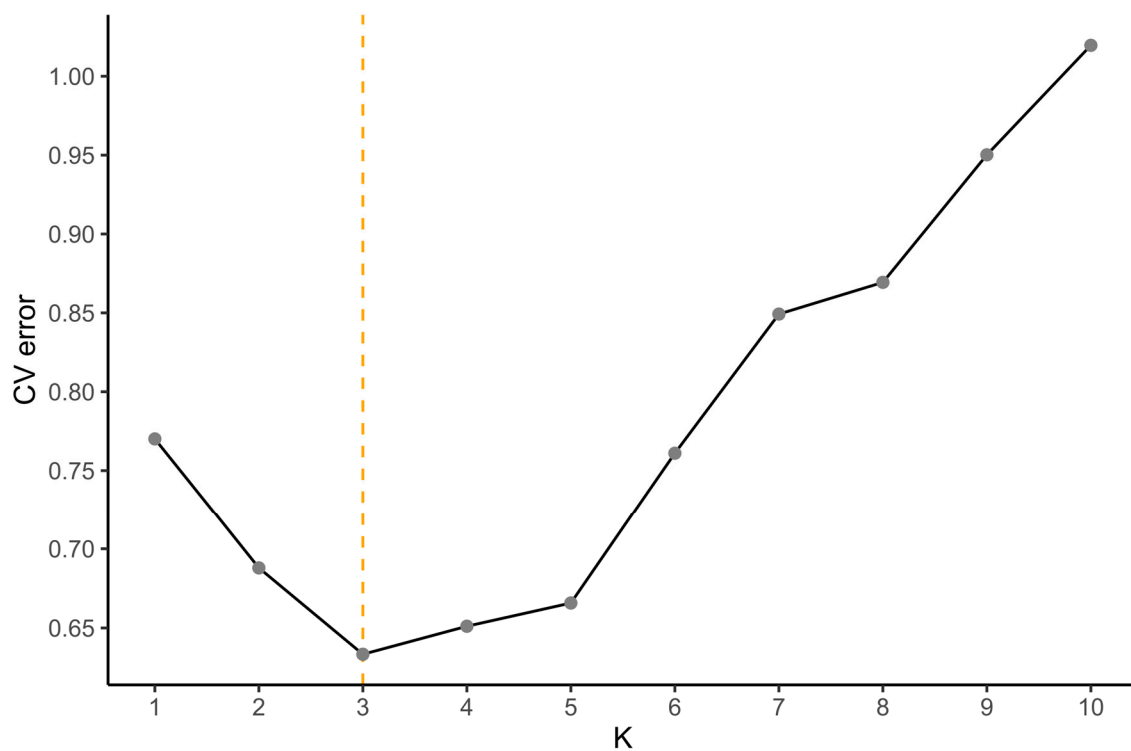
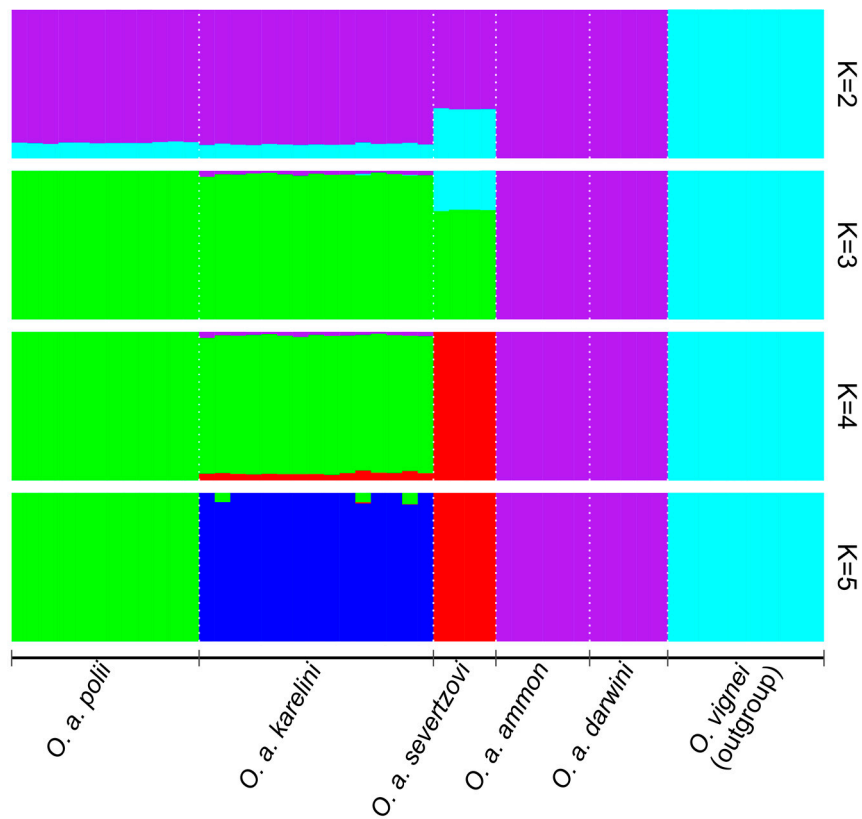


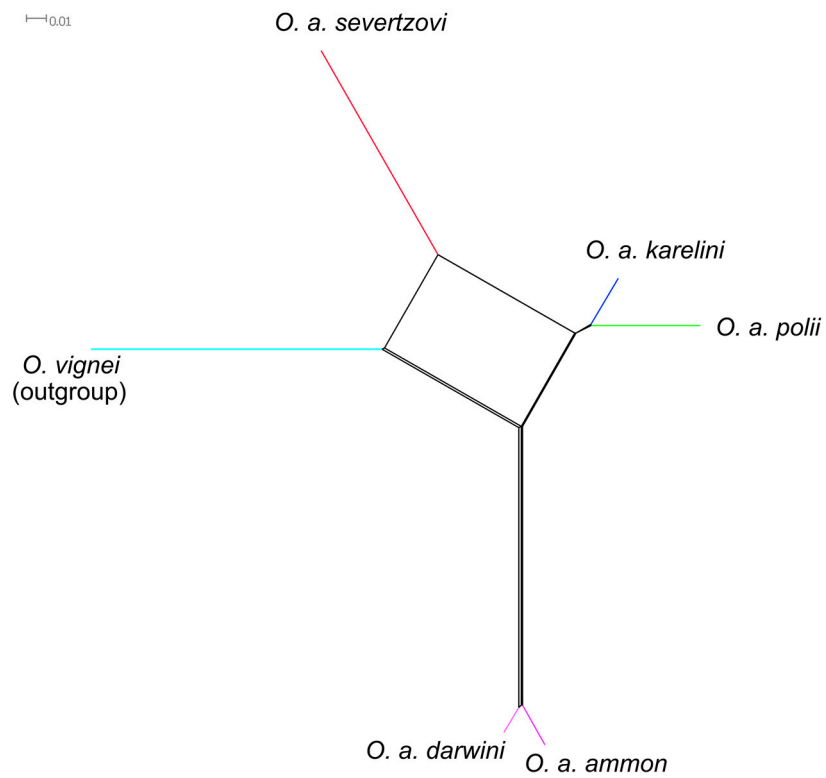
**Figure S1.** Principle component analysis (PC1 and PC3) of the studied populations of *O. ammon*.



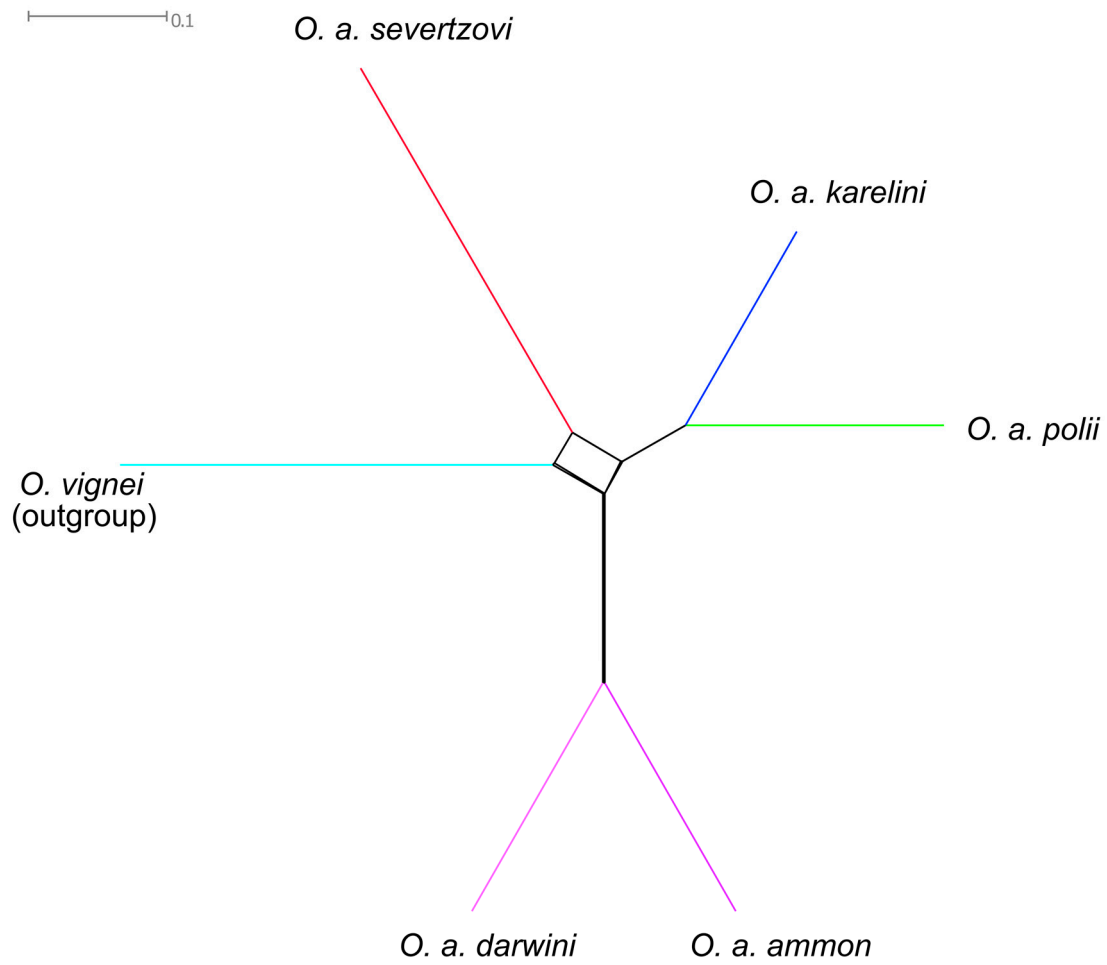
**Figure S2.** Cross validation (CV) error for the Admixture analysis for values of K from 1 to 10.



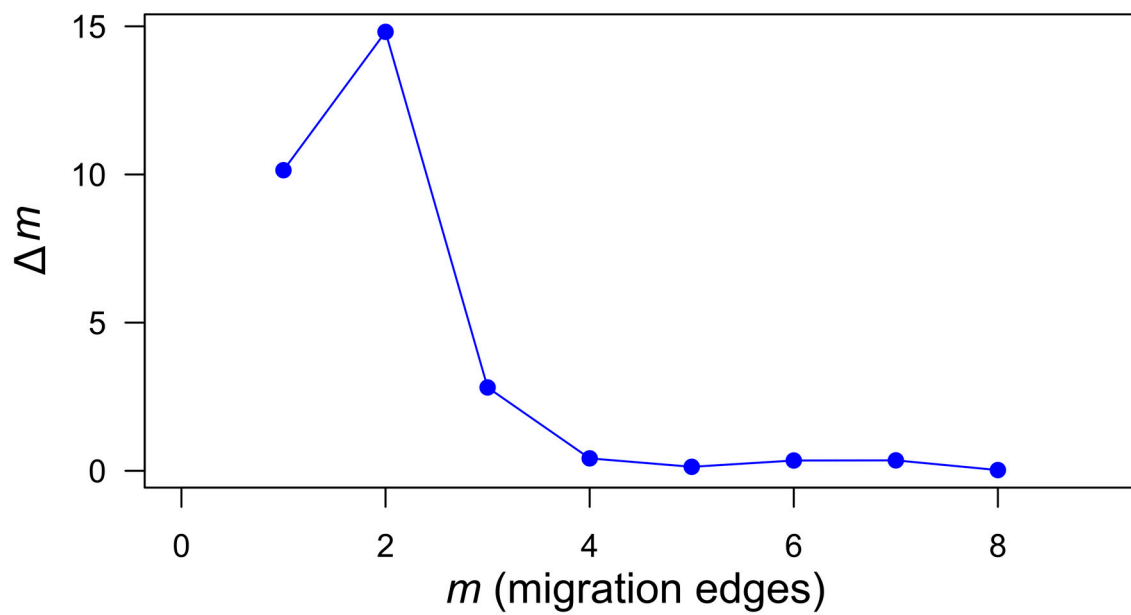
**Figure S3.** Admixture analysis of the studied populations of *O. ammon* and *O. vignei* for K from 2 to 5.



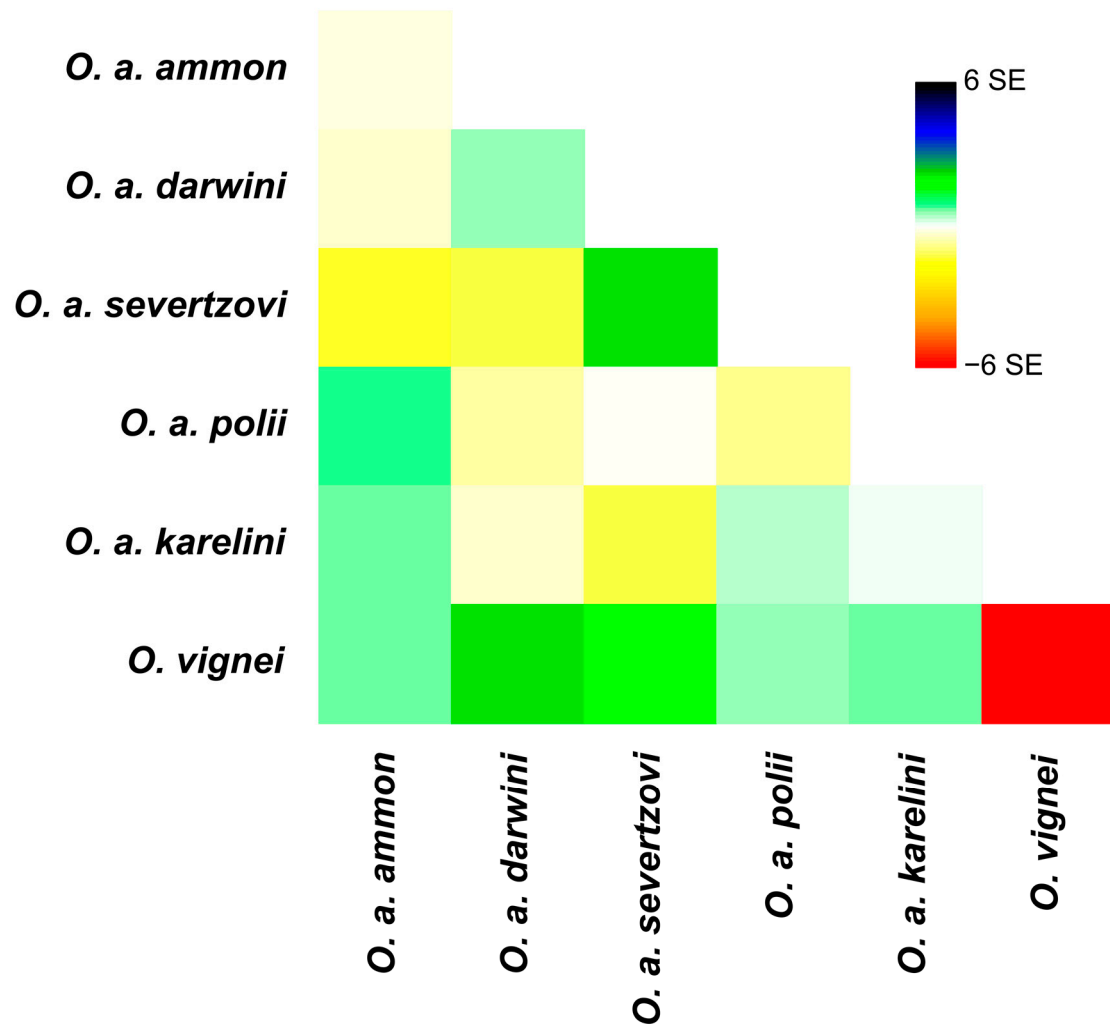
**Figure S4.** Neighbor-Net dendrogram of the studied populations of *O. ammon* based on  $F_{ST}$  pairwise genetic distances.



**Figure S5.** Neighbor-Net dendrogram of the studied populations of *O. ammon* based on Reynolds pairwise genetic distances.



**Figure S6.** The optimal number of migration edges for the Treemix analysis evaluated using the Evanno method.



**Figure S7.** The residual fit plot corresponding to Treemix analysis with two migration events.