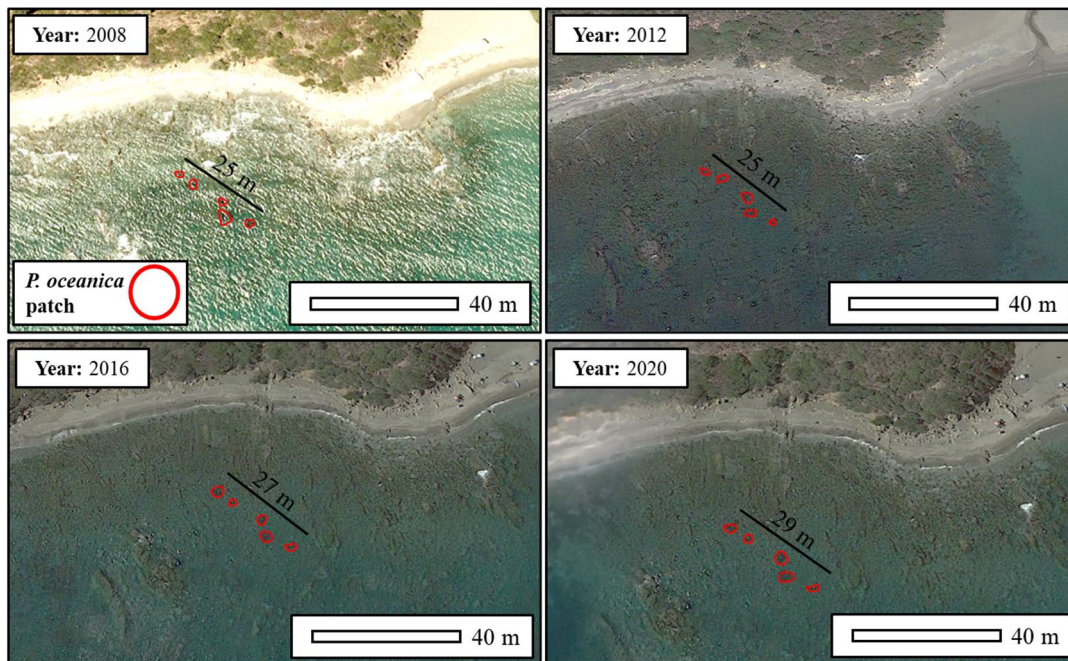


## Supplementary Material



**Figure S1.** Satellite images of the newly reported *P. oceanica* meadow at Cala Sardina (36°18'38.80"N, 5°15'15.13"W) taken from Google Earth Pro (<https://earth.google.com> (accessed on 9 May 2022)) every 4 years, from 2008 to 2020. The location of the identified patches is highlighted with a red circle and the longitudinal distance of the patches extension is indicated.