

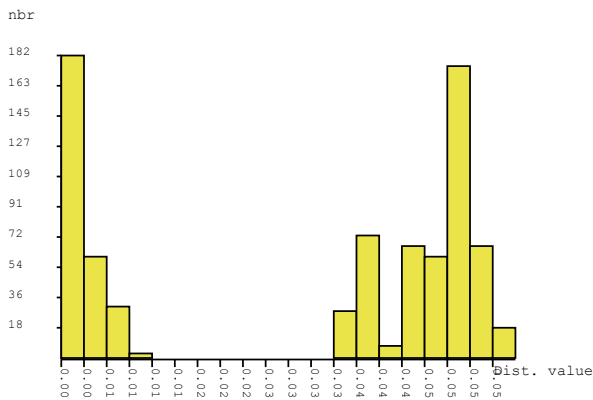
File S2

PARTITION SPECIES ANALYSIS

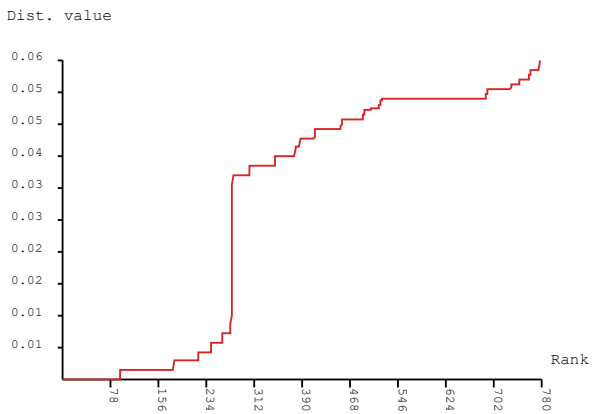
1) ABGD

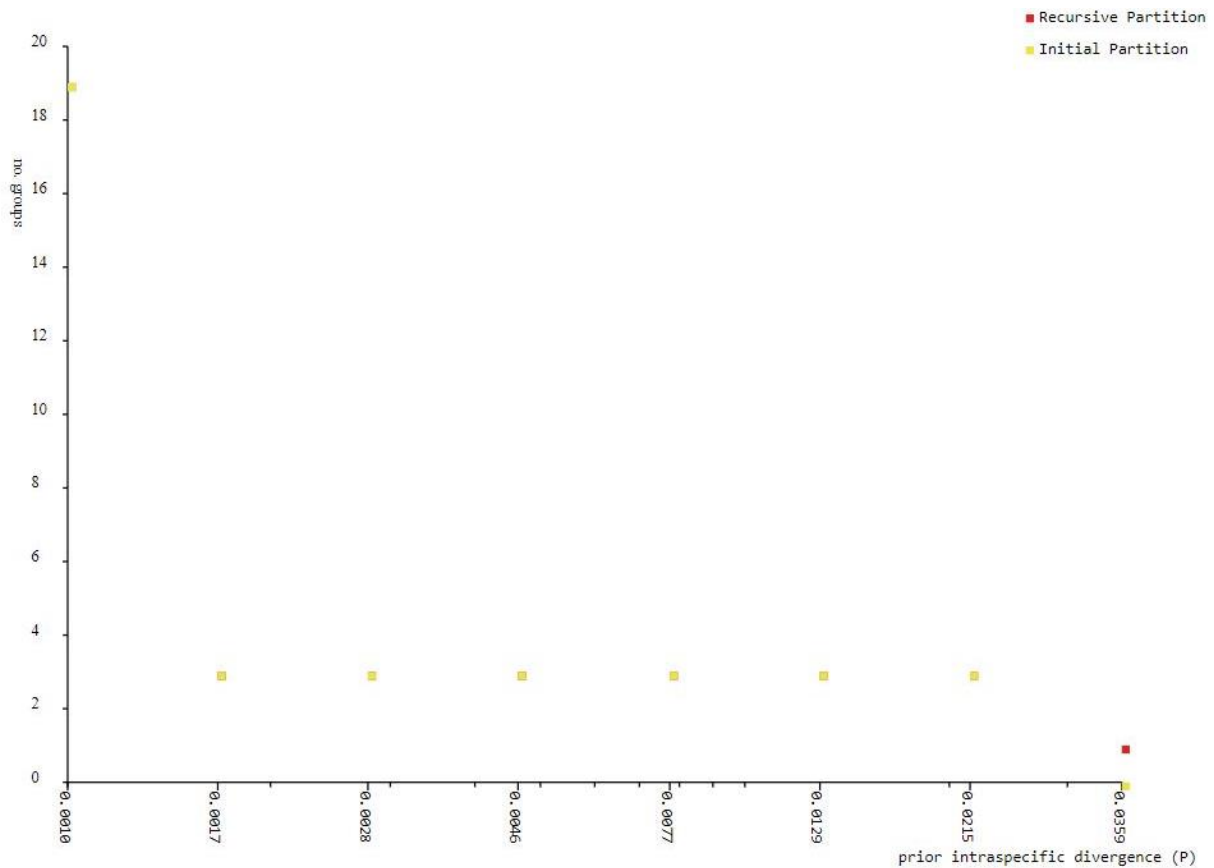
Group	N	Sample ID	Species
Group[1]	17	MNA02814 MNA03791 MNA03812 MNA03832	<i>O. roseus</i>
		MNA03841 MNA05817 MNA06486 MNA06490	
		MNA08024 MNA08025 MNA08027 MNA08028	
		MNA08033 MNA08036 MNA08037 MNA08038	
		MNA08043	
Group[2]	16	MNA02902 MNA03430 MNA03582 MNA03825	<i>O. validus</i>
		MNA04276 MNA04282 MNA04283 MNA05430	
		MNA06331 MNA08021 MNA08022 MNA08026	
		MNA08029 MNA08030 MNA08031 MNA08035	
		MNA06116 MNA06489 MNA08023 MNA08032	
Group[3]	7	MNA08034 MNA08039 MNA08042	<i>O. pearsei</i>

Histogram of distances



Ranked distances





2) bPTP

Species 1 (support = 0.653)

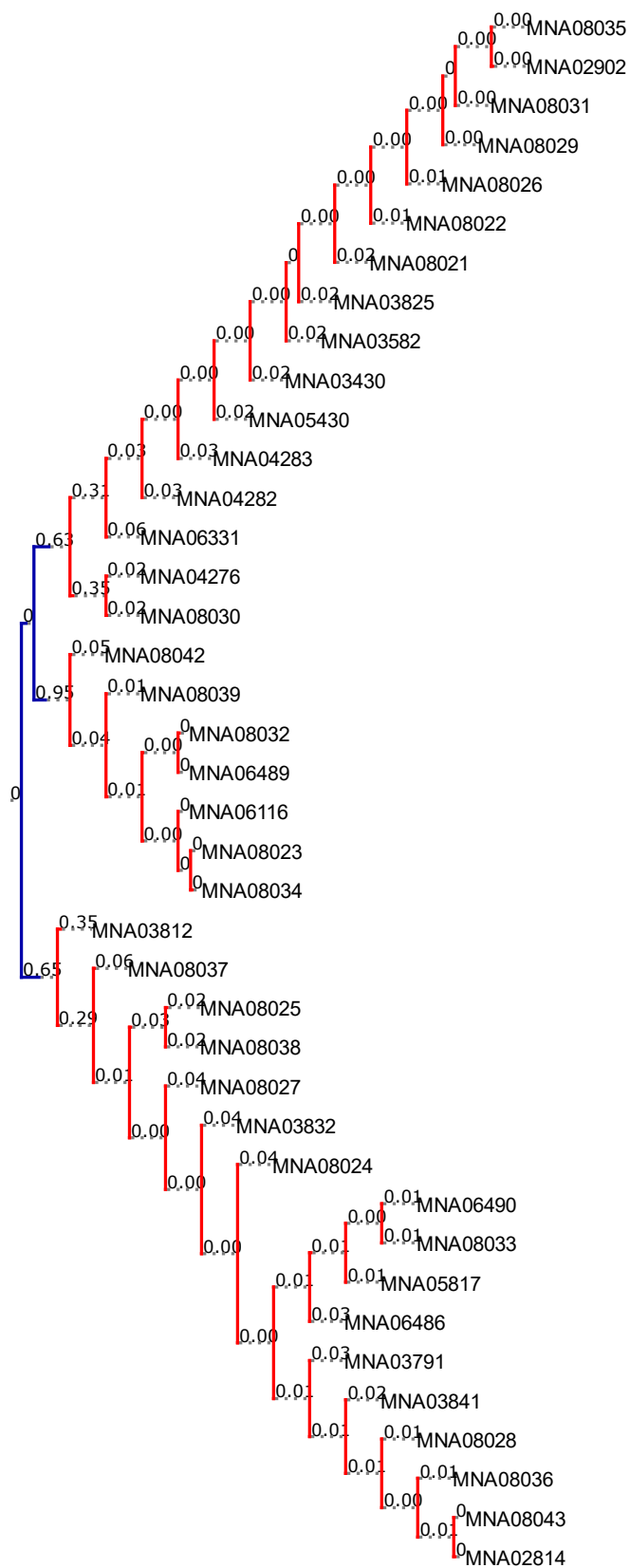
MNA03812,MNA08037,MNA08025,MNA08038,MNA08027,MNA03832,MNA08024,MNA06490,MNA08033,MNA05817,MNA06486,MNA03791,MNA03841,MNA08028,MNA08036,MNA08043,MNA02814

Species 2 (support = 0.633)

MNA08035,MNA02902,MNA08031,MNA08029,MNA08026,MNA08022,MNA08021,MNA03825,MNA03582,MNA03430,MNA05430,MNA04283,MNA04282,MNA06331,MNA04276,MNA08030

Species 3 (support = 0.947)

MNA08042,MNA08039,MNA08032,MNA06489,MNA06116,MNA08023,MNA08034



0.10