

Table 1S. Geographical coordinates of F1 and F2 plant material from the „S“ locations.

F1			F2		
number			numbers		
trees	N	E	seedlings	N	E
1	52° 20' 8,232" N	20° 46' 23,532" E	1	52° 20' 8,178" N	20° 46' 23,898" E
2	52° 20' 8,280" N	20° 46' 25,386" E	2	52° 20' 7,752" N	20° 46' 24,864" E
3	52° 20' 8,694" N	20° 46' 26,472" E	3	52° 20' 8,490" N	20° 46' 26,880" E
4	52° 20' 8,688" N	20° 46' 28,716" E	4	52° 20' 8,490" N	20° 46' 28,572" E
5	52° 20' 8,862" N	20° 46' 30,600" E	5	52° 20' 8,538" N	20° 46' 31,416" E
6	52° 20' 8,640" N	20° 46' 32,232" E	6	52° 20' 8,736" N	20° 46' 32,670" E
7	52° 20' 8,874" N	20° 46' 34,218" E	7	52° 20' 8,790" N	20° 46' 33,774" E
8	52° 20' 9,204" N	20° 46' 36,084" E	8	52° 20' 9,042" N	20° 46' 36,060" E
9	52° 20' 9,024" N	20° 46' 38,814" E	9	52° 20' 9,132" N	20° 46' 37,506" E
10	52° 20' 9,960" N	20° 46' 40,188" E	10	52° 20' 9,462" N	20° 46' 39,690" E
11	52° 20' 9,864" N	20° 46' 42,198" E	11	52° 20' 9,978" N	20° 46' 42,096" E
12	52° 20' 10,980" N	20° 46' 42,726" E	12	52° 20' 10,782" N	20° 46' 42,822" E
13	52° 20' 11,760" N	20° 46' 43,476" E	13	52° 20' 11,898" N	20° 46' 43,788" E
14	52° 20' 12,768" N	20° 46' 44,598" E	14	52° 20' 13,128" N	20° 46' 44,490" E
15	52° 20' 14,034" N	20° 46' 44,916" E	15	52° 20' 13,806" N	20° 46' 45,000" E
16	52° 20' 13,158" N	20° 46' 43,074" E	16	52° 20' 13,050" N	20° 46' 43,410" E
17	52° 20' 12,672" N	20° 46' 41,124" E	17	52° 20' 12,060" N	20° 46' 41,862" E
18	52° 20' 11,316" N	20° 46' 39,552" E	18	52° 20' 11,622" N	20° 46' 40,026" E
19	52° 20' 12,228" N	20° 46' 37,962" E	19	52° 20' 11,250" N	20° 46' 37,806" E
20	52° 20' 12,504" N	20° 46' 36,648" E	20	52° 20' 12,246" N	20° 46' 35,976" E
21	52° 20' 12,498" N	20° 46' 34,728" E	21	52° 20' 13,194" N	20° 46' 34,164" E
22	52° 20' 12,426" N	20° 46' 31,896" E	22	52° 20' 13,692" N	20° 46' 31,422" E
23	52° 20' 11,934" N	20° 46' 29,820" E	23	52° 20' 12,954" N	20° 46' 29,436" E
24	52° 20' 11,052" N	20° 46' 27,954" E	24	52° 20' 12,810" N	20° 46' 27,660" E
25	52° 20' 11,232" N	20° 46' 25,536" E	25	52° 20' 12,666" N	20° 46' 25,290" E
26	52° 20' 11,856" N	20° 46' 23,844" E	26	52° 20' 12,546" N	20° 46' 23,592" E
27	52° 20' 13,050" N	20° 46' 22,068" E	27	52° 20' 12,546" N	20° 46' 21,330" E
28	52° 20' 13,896" N	20° 46' 23,400" E	28	52° 20' 13,896" N	20° 46' 21,822" E
29	52° 20' 14,478" N	20° 46' 25,410" E	29	52° 20' 15,348" N	20° 46' 23,910" E
30	52° 20' 14,880" N	20° 46' 27,444" E	30	52° 20' 14,886" N	20° 46' 27,072" E
31	52° 20' 16,152" N	20° 46' 28,866" E	31	52° 20' 15,540" N	20° 46' 29,664" E
32	52° 20' 16,188" N	20° 46' 30,870" E	32	52° 20' 15,882" N	20° 46' 31,104" E
33	52° 20' 16,254" N	20° 46' 33,204" E	33	52° 20' 16,188" N	20° 46' 33,768" E
34	52° 20' 16,020" N	20° 46' 34,326" E	34	52° 20' 15,342" N	20° 46' 34,710" E
35	52° 20' 15,372" N	20° 46' 37,296" E	35	52° 20' 14,280" N	20° 46' 37,062" E
36	52° 20' 14,382" N	20° 46' 39,120" E	36	52° 20' 13,464" N	20° 46' 39,204" E
37	52° 20' 13,842" N	20° 46' 41,058" E	37	52° 20' 13,224" N	20° 46' 40,896" E
38	52° 20' 15,912" N	20° 46' 47,454" E	38	52° 20' 15,600" N	20° 46' 46,512" E
39	52° 20' 16,974" N	20° 46' 46,278" E	39	52° 20' 17,412" N	20° 46' 45,360" E
40	52° 20' 17,550" N	20° 46' 43,140" E	40	52° 20' 18,906" N	20° 46' 43,728" E
41	52° 20' 11,286" N	20° 46' 47,460" E	41	52° 20' 10,746" N	20° 46' 47,682" E

<b>42</b>	52° 20' 10,026" N	20° 46' 47,412" E	<b>42</b>	52° 20' 10,032" N	20° 46' 48,144" E
<b>43</b>	52° 20' 9,510" N	20° 46' 45,600" E	<b>43</b>	52° 20' 8,682" N	20° 46' 48,954" E
<b>44</b>	52° 20' 8,010" N	20° 46' 45,456" E	<b>44</b>	52° 20' 8,388" N	20° 46' 48,168" E
<b>45</b>	52° 20' 7,440" N	20° 46' 44,208" E	<b>45</b>	52° 20' 6,234" N	20° 46' 44,736" E
<b>46</b>	52° 20' 6,540" N	20° 46' 45,090" E	<b>46</b>	52° 20' 6,426" N	20° 46' 44,214" E
<b>47</b>	52° 20' 5,898" N	20° 46' 42,096" E	<b>47</b>	52° 20' 6,054" N	20° 46' 42,642" E
<b>48</b>	52° 20' 6,438" N	20° 46' 40,752" E	<b>48</b>	52° 20' 6,810" N	20° 46' 40,854" E
<b>49</b>	52° 20' 6,846" N	20° 46' 37,914" E			
<b>50</b>	52° 20' 6,924" N	20° 46' 36,036" E			

Table 2S. Geographical coordinates of F1 and F2 plant material from the „W” locations.

number trees	F1		numbers seedlings	F2	
	N	E		N	E
<b>1</b>	52° 21' 18,576" N	20° 32' 46,830" E	<b>1</b>	52° 21' 18,696" N	20° 32' 46,224" E
<b>2</b>	52° 21' 20,202" N	20° 32' 45,420" E	<b>2</b>	52° 21' 20,784" N	20° 32' 45,726" E
<b>3</b>	52° 21' 21,732" N	20° 32' 44,166" E	<b>3</b>	52° 21' 22,518" N	20° 32' 44,784" E
<b>4</b>	52° 21' 23,268" N	20° 32' 44,340" E	<b>4</b>	52° 21' 23,706" N	20° 32' 45,420" E
<b>5</b>	52° 21' 25,080" N	20° 32' 44,676" E	<b>5</b>	52° 21' 25,212" N	20° 32' 45,978" E
<b>6</b>	52° 21' 26,994" N	20° 32' 43,878" E	<b>6</b>	52° 21' 26,442" N	20° 32' 44,154" E
<b>7</b>	52° 21' 29,490" N	20° 32' 44,694" E	<b>7</b>	52° 21' 28,926" N	20° 32' 45,822" E
<b>8</b>	52° 21' 31,860" N	20° 32' 44,220" E	<b>8</b>	52° 21' 31,656" N	20° 32' 46,566" E
<b>9</b>	52° 21' 34,230" N	20° 32' 42,246" E	<b>9</b>	52° 21' 33,654" N	20° 32' 42,852" E
<b>10</b>	52° 21' 35,538" N	20° 32' 40,206" E	<b>10</b>	52° 21' 34,824" N	20° 32' 41,382" E
<b>11</b>	52° 21' 37,776" N	20° 32' 39,012" E	<b>11</b>	52° 21' 35,736" N	20° 32' 38,664" E
<b>12</b>	52° 21' 37,572" N	20° 32' 35,406" E	<b>12</b>	52° 21' 37,332" N	20° 32' 39,774" E
<b>13</b>	52° 21' 35,178" N	20° 32' 35,556" E	<b>13</b>	52° 21' 37,056" N	20° 32' 35,952" E
<b>14</b>	52° 21' 33,582" N	20° 32' 36,060" E	<b>14</b>	52° 21' 30,882" N	20° 32' 38,664" E
<b>15</b>	52° 21' 31,746" N	20° 32' 37,098" E	<b>15</b>	52° 21' 29,670" N	20° 32' 38,538" E
<b>16</b>	52° 21' 29,718" N	20° 32' 38,880" E	<b>16</b>	52° 21' 28,596" N	20° 32' 41,346" E
<b>17</b>	52° 21' 28,212" N	20° 32' 40,518" E	<b>17</b>	52° 21' 26,520" N	20° 32' 40,698" E
<b>18</b>	52° 21' 26,580" N	20° 32' 40,914" E	<b>18</b>	52° 21' 25,242" N	20° 32' 39,390" E
<b>19</b>	52° 21' 24,870" N	20° 32' 40,182" E	<b>19</b>	52° 21' 24,072" N	20° 32' 39,660" E
<b>20</b>	52° 21' 22,602" N	20° 32' 38,034" E	<b>20</b>	52° 21' 23,010" N	20° 32' 38,526" E
<b>21</b>	52° 21' 20,670" N	20° 32' 39,480" E	<b>21</b>	52° 21' 21,000" N	20° 32' 38,688" E
<b>22</b>	52° 21' 19,296" N	20° 32' 38,952" E	<b>22</b>	52° 21' 20,124" N	20° 32' 39,462" E
<b>23</b>	52° 21' 17,526" N	20° 32' 31,386" E	<b>23</b>	52° 21' 18,678" N	20° 32' 33,216" E
<b>24</b>	52° 21' 18,504" N	20° 32' 30,282" E	<b>24</b>	52° 21' 21,066" N	20° 32' 32,532" E
<b>25</b>	52° 21' 20,838" N	20° 32' 30,972" E	<b>25</b>	52° 21' 24,330" N	20° 32' 28,542" E
<b>26</b>	52° 21' 22,446" N	20° 32' 30,540" E	<b>26</b>	52° 21' 27,588" N	20° 32' 34,032" E
<b>27</b>	52° 21' 23,994" N	20° 32' 29,994" E	<b>27</b>	52° 21' 28,326" N	20° 32' 34,608" E
<b>28</b>	52° 21' 25,506" N	20° 32' 29,388" E	<b>28</b>	52° 21' 29,040" N	20° 32' 31,938" E
<b>29</b>	52° 21' 27,348" N	20° 32' 29,814" E	<b>29</b>	52° 21' 31,056" N	20° 32' 32,928" E
<b>30</b>	52° 21' 29,694" N	20° 32' 32,370" E	<b>30</b>	52° 21' 36,480" N	20° 32' 30,174" E
<b>31</b>	52° 21' 31,638" N	20° 32' 32,202" E	<b>31</b>	52° 21' 37,548" N	20° 32' 33,024" E
<b>32</b>	52° 21' 34,134" N	20° 32' 33,090" E	<b>32</b>	52° 21' 38,832" N	20° 32' 34,146" E

33	52° 21' 35,256" N	20° 32' 31,902" E	33	52° 21' 40,788" N	20° 32' 35,016" E
34	52° 21' 37,662" N	20° 32' 32,220" E	34	52° 21' 41,796" N	20° 32' 37,242" E
35	52° 21' 40,668" N	20° 32' 36,168" E	35	52° 21' 42,636" N	20° 32' 38,316" E
36	52° 21' 42,330" N	20° 32' 37,320" E	36	52° 21' 43,086" N	20° 32' 38,676" E
37	52° 21' 43,896" N	20° 32' 38,928" E	37	52° 21' 44,964" N	20° 32' 40,338" E
38	52° 21' 46,818" N	20° 32' 38,706" E	38	52° 21' 46,764" N	20° 32' 39,714" E
39	52° 21' 45,900" N	20° 32' 41,142" E	39	52° 21' 48,438" N	20° 32' 39,498" E
40	52° 21' 48,576" N	20° 32' 38,736" E	40	52° 21' 49,506" N	20° 32' 37,806" E
41	52° 21' 50,982" N	20° 32' 38,526" E	41	52° 21' 50,844" N	20° 32' 39,396" E
42	52° 21' 52,542" N	20° 32' 38,400" E	42	52° 21' 51,906" N	20° 32' 40,050" E
43	52° 21' 54,024" N	20° 32' 36,882" E	43	52° 21' 53,358" N	20° 32' 38,352" E
44	52° 21' 55,512" N	20° 32' 34,338" E	44	52° 21' 54,600" N	20° 32' 34,584" E
45	52° 21' 57,780" N	20° 32' 35,154" E			
46	52° 21' 59,220" N	20° 32' 34,266" E			
47	52° 22' 1,188" N	20° 32' 32,688" E			
48	52° 22' 3,042" N	20° 32' 30,630" E			
49	52° 22' 3,504" N	20° 32' 35,196" E			
50	52° 22' 6,018" N	20° 32' 35,400" E			

Table 3S. Geographical coordinates of F1 and F2 plant material from the „CG“ locations.

number trees	F1		numbers seedlings	F2	
	N	E		N	E
1	52° 20' 14,772" N	20° 23' 45,876" E	1	52° 20' 22,368" N	20° 23' 45,840" E
2	52° 20' 16,224" N	20° 23' 46,092" E	2	52° 20' 22,176" N	20° 23' 46,296" E
3	52° 20' 18,366" N	20° 23' 46,224" E	3	52° 20' 23,622" N	20° 23' 45,252" E
4	52° 20' 19,614" N	20° 23' 44,526" E	4	52° 20' 24,996" N	20° 23' 44,766" E
5	52° 20' 21,546" N	20° 23' 44,976" E	5	52° 20' 26,706" N	20° 23' 44,484" E
6	52° 20' 23,532" N	20° 23' 43,554" E	6	52° 20' 27,702" N	20° 23' 45,096" E
7	52° 20' 26,220" N	20° 23' 43,434" E	7	52° 20' 28,680" N	20° 23' 43,212" E
8	52° 20' 28,074" N	20° 23' 43,530" E	8	52° 20' 29,172" N	20° 23' 43,446" E
9	52° 20' 30,726" N	20° 23' 43,248" E	9	52° 20' 29,352" N	20° 23' 44,670" E
10	52° 20' 32,322" N	20° 23' 43,704" E	10	52° 20' 29,430" N	20° 23' 43,638" E
11	52° 20' 34,716" N	20° 23' 43,464" E	11	52° 20' 34,086" N	20° 23' 44,028" E
12	52° 20' 36,558" N	20° 23' 44,556" E	12	52° 20' 33,096" N	20° 23' 46,182" E
13	52° 20' 38,106" N	20° 23' 40,116" E	13	52° 20' 33,888" N	20° 23' 43,608" E
14	52° 20' 35,928" N	20° 23' 40,230" E	14	52° 20' 34,590" N	20° 23' 43,980" E
15	52° 20' 34,116" N	20° 23' 39,312" E	15	52° 20' 34,734" N	20° 23' 43,008" E
16	52° 20' 32,844" N	20° 23' 39,576" E	16	52° 20' 34,860" N	20° 23' 40,314" E
17	52° 20' 31,008" N	20° 23' 39,138" E	17	52° 20' 33,912" N	20° 23' 38,520" E
18	52° 20' 29,094" N	20° 23' 38,406" E	18	52° 20' 32,868" N	20° 23' 38,814" E
19	52° 20' 27,696" N	20° 23' 38,802" E	19	52° 20' 30,474" N	20° 23' 37,464" E
20	52° 20' 25,992" N	20° 23' 38,118" E	20	52° 20' 27,756" N	20° 23' 38,442" E
21	52° 20' 24,762" N	20° 23' 40,992" E	21	52° 20' 25,674" N	20° 23' 40,704" E
22	52° 20' 22,572" N	20° 23' 40,224" E	22	52° 20' 23,454" N	20° 23' 41,250" E

23	52° 20' 20,550" N	20° 23' 39,204" E	23	52° 20' 21,204" N	20° 23' 42,480" E
24	52° 20' 18,840" N	20° 23' 39,438" E	24	52° 20' 18,030" N	20° 23' 45,744" E
25	52° 20' 16,524" N	20° 23' 39,822" E	25	52° 20' 28,884" N	20° 24' 23,472" E
26	52° 20' 15,690" N	20° 23' 41,466" E	26	52° 20' 28,632" N	20° 24' 23,844" E
27	52° 20' 20,304" N	20° 24' 24,054" E	27	52° 20' 28,050" N	20° 24' 25,254" E
28	52° 20' 21,768" N	20° 24' 25,596" E	28	52° 20' 27,816" N	20° 24' 25,590" E
29	52° 20' 23,334" N	20° 24' 25,680" E	29	52° 20' 21,684" N	20° 24' 29,130" E
30	52° 20' 25,128" N	20° 24' 25,326" E	30	52° 20' 21,468" N	20° 24' 32,712" E
31	52° 20' 26,862" N	20° 24' 26,418" E	31	52° 20' 21,948" N	20° 24' 32,010" E
32	52° 20' 28,368" N	20° 24' 26,562" E	32	52° 20' 22,434" N	20° 24' 32,022" E
33	52° 20' 27,834" N	20° 24' 29,484" E	33	52° 20' 24,906" N	20° 24' 33,240" E
34	52° 20' 26,520" N	20° 24' 29,340" E	34	52° 20' 25,290" N	20° 24' 33,198" E
35	52° 20' 24,912" N	20° 24' 29,520" E	35	52° 20' 27,108" N	20° 24' 34,194" E
36	52° 20' 23,724" N	20° 24' 28,464" E	36	52° 20' 34,044" N	20° 24' 36,330" E
37	52° 20' 20,952" N	20° 24' 28,302" E	37	52° 20' 34,404" N	20° 24' 36,600" E
38	52° 20' 19,158" N	20° 24' 28,380" E	38	52° 20' 36,096" N	20° 24' 38,292" E
39	52° 20' 19,626" N	20° 24' 30,822" E	39	52° 20' 36,498" N	20° 24' 38,646" E
40	52° 20' 22,998" N	20° 24' 34,392" E	40	52° 20' 36,552" N	20° 24' 39,060" E
41	52° 20' 21,306" N	20° 24' 32,274" E	41	52° 20' 39,132" N	20° 24' 37,596" E
42	52° 20' 24,714" N	20° 24' 33,852" E	42	52° 20' 39,000" N	20° 24' 37,146" E
43	52° 20' 25,974" N	20° 24' 34,716" E	43	52° 20' 38,178" N	20° 24' 36,072" E
44	52° 20' 27,198" N	20° 24' 36,252" E	44	52° 20' 38,370" N	20° 24' 35,022" E
45	52° 20' 33,096" N	20° 24' 37,836" E			
46	52° 20' 36,300" N	20° 24' 36,384" E			
47	52° 20' 39,054" N	20° 24' 36,732" E			
48	52° 20' 40,410" N	20° 24' 36,000" E			
49	52° 20' 39,822" N	20° 24' 33,744" E			
50	52° 20' 38,262" N	20° 24' 31,968" E			

Table 4S. Geographical coordinates of F1 and F2 plant material from the „Gr“ locations.

number trees	F1		numbers seedlings	F2	
	N	E		N	E
1	52° 17' 22,896" N	20° 28' 20,910" E	1	52° 17' 12,372" N	20° 28' 15,954" E
2	52° 17' 25,032" N	20° 28' 20,112" E	2	52° 17' 12,816" N	20° 28' 16,434" E
3	52° 17' 26,946" N	20° 28' 20,124" E	3	52° 17' 14,076" N	20° 28' 17,934" E
4	52° 17' 28,644" N	20° 28' 19,950" E	4	52° 17' 19,188" N	20° 28' 17,706" E
5	52° 17' 30,552" N	20° 28' 18,546" E	5	52° 17' 22,092" N	20° 28' 12,696" E
6	52° 17' 32,376" N	20° 28' 17,892" E	6	52° 17' 21,606" N	20° 28' 12,834" E
7	52° 17' 34,284" N	20° 28' 19,914" E	7	52° 17' 20,610" N	20° 28' 12,030" E

8	52° 17' 33,660" N	20° 28' 12,372" E	8	52° 17' 20,580" N	20° 28' 11,478" E
9	52° 17' 31,926" N	20° 28' 11,802" E	9	52° 17' 19,812" N	20° 28' 11,940" E
10	52° 17' 29,778" N	20° 28' 11,898" E	10	52° 17' 20,172" N	20° 28' 10,512" E
11	52° 17' 27,906" N	20° 28' 9,984" E	11	52° 17' 19,782" N	20° 28' 10,770" E
12	52° 17' 25,776" N	20° 28' 8,022" E	12	52° 17' 19,128" N	20° 28' 10,608" E
13	52° 17' 24,150" N	20° 28' 9,204" E	13	52° 17' 18,552" N	20° 28' 8,730" E
14	52° 17' 22,212" N	20° 28' 7,680" E	14	52° 17' 17,790" N	20° 28' 8,280" E
15	52° 17' 19,200" N	20° 28' 9,330" E	15	52° 17' 19,218" N	20° 28' 7,974" E
16	52° 17' 17,993" N	20° 28' 9,971" E	16	52° 17' 18,312" N	20° 28' 7,674" E
17	52° 17' 14,988" N	20° 28' 10,458" E	17	52° 17' 18,552" N	20° 28' 6,510" E
18	52° 17' 12,912" N	20° 28' 6,960" E	18	52° 17' 18,348" N	20° 28' 6,516" E
19	52° 17' 14,598" N	20° 28' 5,172" E	19	52° 17' 18,572" N	20° 28' 4,647" E
20	52° 17' 18,240" N	20° 28' 3,498" E	20	52° 17' 19,263" N	20° 28' 2,826" E
21	52° 17' 20,400" N	20° 28' 3,468" E	21	52° 17' 18,303" N	20° 28' 1,453" E
22	52° 17' 22,926" N	20° 28' 1,602" E	22	52° 17' 17,224" N	20° 28' 1,418" E
23	52° 17' 24,942" N	20° 28' 3,792" E	23	52° 17' 19,749" N	20° 28' 0,914" E
24	52° 17' 28,704" N	20° 28' 3,492" E	24	52° 17' 17,113" N	20° 27' 53,786" E
25	52° 17' 30,918" N	20° 28' 3,606" E	25	52° 17' 17,488" N	20° 27' 52,542" E
26	52° 17' 33,312" N	20° 28' 3,078" E	26	52° 17' 17,088" N	20° 28' 10,092" E
27	52° 17' 10,344" N	20° 27' 59,838" E	27	52° 17' 20,442" N	20° 28' 13,218" E
28	52° 17' 12,582" N	20° 28' 0,492" E	28	52° 17' 21,720" N	20° 28' 11,718" E
29	52° 17' 14,970" N	20° 28' 1,320" E	29	52° 17' 20,568" N	20° 28' 8,868" E
30	52° 17' 17,472" N	20° 27' 59,304" E	30	52° 17' 21,762" N	20° 28' 5,928" E
31	52° 17' 19,554" N	20° 27' 59,370" E	31	52° 17' 21,672" N	20° 28' 5,406" E
32	52° 17' 21,582" N	20° 27' 58,836" E	32	52° 17' 20,838" N	20° 28' 4,770" E
33	52° 17' 24,276" N	20° 27' 57,534" E	33	52° 17' 21,546" N	20° 28' 5,154" E
34	52° 17' 25,884" N	20° 27' 57,540" E	34	52° 17' 20,298" N	20° 28' 4,584" E
35	52° 17' 27,174" N	20° 27' 58,428" E	35	52° 17' 18,714" N	20° 27' 54,900" E
36	52° 17' 29,658" N	20° 27' 58,638" E	36	52° 17' 18,606" N	20° 27' 55,926" E
37	52° 17' 31,470" N	20° 27' 58,596" E	37	52° 17' 18,804" N	20° 27' 54,864" E

38	52° 17' 31,986" N	20° 27' 52,914" E	38	52° 17' 18,996" N	20° 27' 55,752" E
39	52° 17' 30,756" N	20° 27' 50,760" E	39	52° 17' 20,118" N	20° 27' 52,860" E
40	52° 17' 29,214" N	20° 27' 47,988" E	40	52° 17' 22,680" N	20° 27' 53,676" E
41	52° 17' 26,682" N	20° 27' 47,292" E	41	52° 17' 23,334" N	20° 27' 55,170" E
42	52° 17' 25,176" N	20° 27' 47,016" E	42	52° 17' 25,296" N	20° 27' 46,356" E
43	52° 17' 23,478" N	20° 27' 48,414" E	43	52° 17' 17,983" N	20° 27' 44,745" E
44	52° 17' 21,438" N	20° 27' 49,362" E	44	52° 17' 21,780" N	20° 27' 48,990" E
45	52° 17' 18,756" N	20° 27' 49,878" E	45	52° 17' 22,086" N	20° 27' 48,672" E
46	52° 17' 16,590" N	20° 27' 52,338" E	46	52° 17' 21,990" N	20° 27' 48,720" E
47	52° 17' 14,448" N	20° 27' 51,024" E	47	52° 17' 21,444" N	20° 27' 49,770" E
48	52° 17' 12,942" N	20° 27' 50,028" E	48	52° 17' 17,029" N	20° 27' 48,534" E
49	52° 17' 13,674" N	20° 27' 47,850" E	49	52° 17' 17,058" N	20° 27' 50,052" E
50	52° 17' 15,576" N	20° 27' 47,190" E			

Table 5S. Geographical coordinates of F1 and F2 plant material from the „N“ locations.

number trees	F1		numbers seedlings	F2	
	N	E		N	E
1	52° 17' 44,226" N	20° 29' 52,026" E	1	52° 17' 44,610" N	20° 30' 7,726" E
2	52° 17' 45,162" N	20° 29' 53,538" E	2	52° 17' 45,012" N	20° 30' 11,149" E
3	52° 17' 43,404" N	20° 29' 54,684" E	3	52° 17' 45,398" N	20° 30' 13,118" E
4	52° 17' 44,556" N	20° 29' 56,898" E	4	52° 17' 46,323" N	20° 30' 13,149" E
5	52° 17' 43,872" N	20° 29' 59,154" E	5	52° 17' 47,061" N	20° 30' 14,348" E
6	52° 17' 43,062" N	20° 30' 2,346" E	6	52° 17' 47,754" N	20° 30' 13,756" E
7	52° 17' 43,182" N	20° 30' 4,044" E	7	52° 17' 48,419" N	20° 30' 12,717" E
8	52° 17' 43,608" N	20° 30' 7,956" E	8	52° 17' 48,163" N	20° 30' 11,255" E
9	52° 17' 43,944" N	20° 30' 10,650" E	9	52° 17' 47,483" N	20° 30' 10,841" E
10	52° 17' 44,370" N	20° 30' 13,662" E	10	52° 17' 49,819" N	20° 30' 13,100" E
11	52° 17' 46,176" N	20° 30' 15,216" E	11	52° 17' 50,920" N	20° 30' 12,690" E
12	52° 17' 45,756" N	20° 30' 14,022" E	12	52° 17' 51,281" N	20° 30' 11,305" E
13	52° 17' 46,608" N	20° 30' 13,698" E	13	52° 17' 51,508" N	20° 30' 9,636" E
14	52° 17' 47,052" N	20° 30' 10,146" E	14	52° 17' 51,734" N	20° 30' 8,023" E
15	52° 17' 48,090" N	20° 30' 10,020" E	15	52° 17' 52,344" N	20° 30' 11,229" E
16	52° 17' 47,448" N	20° 30' 7,734" E	16	52° 17' 53,186" N	20° 30' 9,693" E
17	52° 17' 46,938" N	20° 30' 7,566" E	17	52° 17' 54,165" N	20° 30' 10,844" E
18	52° 17' 47,886" N	20° 30' 4,194" E	18	52° 17' 53,240" N	20° 30' 8,130" E
19	52° 17' 46,422" N	20° 30' 2,796" E	19	52° 17' 53,977" N	20° 30' 9,440" E
20	52° 17' 48,012" N	20° 30' 2,076" E	20	52° 17' 55,050" N	20° 30' 11,321" E
21	52° 17' 47,916" N	20° 29' 59,340" E	21	52° 17' 53,120" N	20° 30' 12,206" E

22	52° 17' 46,116" N	20° 30' 0,162" E	22	52° 17' 52,709" N	20° 30' 6,770" E
23	52° 17' 48,012" N	20° 29' 57,384" E	23	52° 17' 52,174" N	20° 30' 5,746" E
24	52° 17' 47,016" N	20° 29' 58,560" E	24	52° 17' 51,605" N	20° 30' 4,665" E
25	52° 17' 47,418" N	20° 29' 56,232" E	25	52° 17' 50,785" N	20° 30' 7,152" E
26	52° 17' 48,882" N	20° 29' 55,818" E	26	52° 17' 50,468" N	20° 30' 10,551" E
27	52° 17' 49,674" N	20° 29' 59,586" E	27	52° 17' 49,592" N	20° 30' 12,030" E
28	52° 17' 48,942" N	20° 30' 1,134" E	28	52° 17' 46,512" N	20° 30' 3,654" E
29	52° 17' 49,020" N	20° 30' 3,084" E	29	52° 17' 48,155" N	20° 30' 1,139" E
30	52° 17' 48,648" N	20° 30' 7,644" E	30	52° 17' 48,784" N	20° 30' 0,154" E
31	52° 17' 48,816" N	20° 30' 9,180" E	31	52° 17' 50,014" N	20° 30' 3,102" E
32	52° 17' 48,858" N	20° 30' 11,388" E	32	52° 17' 49,735" N	20° 30' 0,857" E
33	52° 17' 49,122" N	20° 30' 6,750" E	33	52° 17' 49,313" N	20° 30' 4,364" E
34	52° 17' 49,080" N	20° 30' 13,152" E	34	52° 17' 47,687" N	20° 30' 2,912" E
35	52° 17' 49,962" N	20° 30' 8,880" E	35	52° 17' 48,585" N	20° 30' 2,327" E
36	52° 17' 48,684" N	20° 30' 14,592" E			
37	52° 17' 50,142" N	20° 30' 14,514" E			
38	52° 17' 50,298" N	20° 30' 12,078" E			
39	52° 17' 50,706" N	20° 30' 14,274" E			
40	52° 17' 51,660" N	20° 30' 13,518" E			
41	52° 17' 51,786" N	20° 30' 12,204" E			
42	52° 17' 52,026" N	20° 30' 9,324" E			
43	52° 17' 50,322" N	20° 30' 5,646" E			
44	52° 17' 49,500" N	20° 30' 2,520" E			
45	52° 17' 54,534" N	20° 30' 7,380" E			
46	52° 17' 55,332" N	20° 30' 9,894" E			
47	52° 17' 58,044" N	20° 30' 12,660" E			
48	52° 17' 43,932" N	20° 29' 51,486" E			

Table 6S. Geographical coordinates of F1 and F2 plant material from the „KG“ locations.

number trees	F1		numbers seedlings	F2	
	N	E		N	E
1	52° 20' 23,478" N	20° 25' 4,164" E	1	52° 20' 24,146" N	20° 25' 7,570" E
2	52° 20' 23,382" N	20° 25' 5,526" E	2	52° 20' 25,624" N	20° 25' 9,366" E
3	52° 20' 23,208" N	20° 25' 8,970" E	3	52° 20' 26,450" N	20° 25' 11,910" E
4	52° 20' 25,182" N	20° 25' 11,514" E	4	52° 20' 26,895" N	20° 25' 14,022" E
5	52° 20' 26,100" N	20° 25' 14,196" E	5	52° 20' 27,009" N	20° 25' 18,851" E
6	52° 20' 27,360" N	20° 25' 17,472" E	6	52° 20' 25,777" N	20° 25' 21,539" E
7	52° 20' 28,578" N	20° 25' 20,982" E	7	52° 20' 24,603" N	20° 25' 22,970" E
8	52° 20' 27,996" N	20° 25' 23,568" E	8	52° 20' 24,500" N	20° 25' 24,435" E
9	52° 20' 26,988" N	20° 25' 21,498" E	9	52° 20' 25,496" N	20° 25' 23,558" E
10	52° 20' 25,572" N	20° 25' 20,550" E	10	52° 20' 26,661" N	20° 25' 22,826" E
11	52° 20' 25,218" N	20° 25' 22,734" E	11	52° 20' 27,565" N	20° 25' 22,436" E
12	52° 20' 24,012" N	20° 25' 25,110" E	12	52° 20' 28,924" N	20° 25' 23,388" E
13	52° 20' 22,530" N	20° 25' 21,762" E	13	52° 20' 29,994" N	20° 25' 23,493" E

14	52° 20' 24,498" N	20° 25' 22,038" E	14	52° 20' 30,535" N	20° 25' 21,272" E
15	52° 20' 30,234" N	20° 25' 25,116" E	15	52° 20' 32,892" N	20° 25' 14,005" E
16	52° 20' 29,880" N	20° 25' 21,906" E	16	52° 20' 33,467" N	20° 25' 12,485" E
17	52° 20' 29,244" N	20° 25' 19,116" E	17	52° 20' 33,662" N	20° 25' 10,533" E
18	52° 20' 28,806" N	20° 25' 16,656" E	18	52° 20' 32,479" N	20° 25' 9,166" E
19	52° 20' 27,804" N	20° 25' 12,780" E	19	52° 20' 32,235" N	20° 25' 11,676" E
20	52° 20' 26,898" N	20° 25' 9,888" E	20	52° 20' 32,135" N	20° 25' 12,861" E
21	52° 20' 25,926" N	20° 25' 8,154" E	21	52° 20' 26,218" N	20° 25' 24,001" E
22	52° 20' 24,690" N	20° 25' 6,540" E	22	52° 20' 25,891" N	20° 25' 22,731" E
23	52° 20' 24,774" N	20° 25' 4,020" E	23	52° 20' 26,430" N	20° 25' 20,651" E
24	52° 20' 26,526" N	20° 25' 3,612" E	24	52° 20' 27,491" N	20° 25' 21,454" E
25	52° 20' 26,064" N	20° 25' 6,264" E	25	52° 20' 27,082" N	20° 25' 23,399" E
26	52° 20' 26,994" N	20° 25' 7,842" E	26	52° 20' 24,893" N	20° 25' 23,818" E
27	52° 20' 27,360" N	20° 25' 10,566" E	27	52° 20' 30,474" N	20° 25' 22,739" E
28	52° 20' 29,598" N	20° 25' 11,838" E	28	52° 20' 29,205" N	20° 25' 17,873" E
29	52° 20' 30,672" N	20° 25' 13,026" E	29	52° 20' 30,902" N	20° 25' 15,689" E
30	52° 20' 31,848" N	20° 25' 14,676" E	30	52° 20' 32,794" N	20° 25' 11,484" E
31	52° 20' 30,468" N	20° 25' 16,656" E	31	52° 20' 25,821" N	20° 25' 10,771" E
32	52° 20' 29,269" N	20° 25' 18,814" E	32	52° 20' 24,419" N	20° 25' 9,817" E
33	52° 20' 28,746" N	20° 25' 21,714" E	33	52° 20' 28,078" N	20° 25' 15,389" E
34	52° 20' 29,724" N	20° 25' 24,492" E	34	52° 20' 26,821" N	20° 25' 16,607" E
35	52° 20' 31,902" N	20° 25' 25,092" E	35	52° 20' 31,390" N	20° 25' 10,670" E
36	52° 20' 32,784" N	20° 25' 23,262" E	36	52° 20' 26,144" N	20° 25' 19,523" E
37	52° 20' 33,511" N	20° 25' 20,254" E	37	52° 20' 31,273" N	20° 25' 13,323" E
38	52° 20' 33,576" N	20° 25' 17,520" E	38	52° 20' 32,293" N	20° 25' 17,552" E
39	52° 20' 33,606" N	20° 25' 14,742" E	39	52° 20' 31,689" N	20° 25' 21,449" E
40	52° 20' 34,308" N	20° 25' 12,204" E	40	52° 20' 31,499" N	20° 25' 22,981" E
41	52° 20' 34,644" N	20° 25' 10,398" E	41	52° 20' 30,458" N	20° 25' 24,067" E
42	52° 20' 33,558" N	20° 25' 7,656" E	42	52° 20' 24,146" N	20° 25' 7,570" E
43	52° 20' 32,736" N	20° 25' 10,272" E	43	52° 20' 30,739" N	20° 25' 11,418" E

Table 7S. Geographical coordinates of F1 and F2 plant material from the „Wi“ locations.

number trees	F1		numbers seedlings	F2	
	N	E		N	E
1	52° 18' 41,730" N	20° 39' 34,380" E	1	52° 18' 41,592" N	20° 39' 34,668" E
2	52° 18' 40,812" N	20° 39' 34,524" E	2	52° 18' 40,140" N	20° 39' 34,962" E
3	52° 18' 39,186" N	20° 39' 34,890" E	3	52° 18' 39,246" N	20° 39' 36,084" E
4	52° 18' 37,716" N	20° 39' 35,538" E	4	52° 18' 37,656" N	20° 39' 35,652" E
5	52° 18' 36,660" N	20° 39' 34,788" E	5	52° 18' 36,264" N	20° 39' 35,400" E
6	52° 18' 35,616" N	20° 39' 34,920" E	6	52° 18' 35,028" N	20° 39' 34,872" E
7	52° 18' 34,662" N	20° 39' 36,660" E	7	52° 18' 34,482" N	20° 39' 35,958" E
8	52° 18' 33,402" N	20° 39' 36,696" E	8	52° 18' 33,270" N	20° 39' 37,938" E
9	52° 18' 31,872" N	20° 39' 37,302" E	9	52° 18' 32,124" N	20° 39' 39,258" E



10	52° 18' 30,162" N	20° 39' 37,140" E	10	52° 18' 29,712" N	20° 39' 37,200" E
11	52° 18' 28,158" N	20° 39' 38,316" E	11	52° 18' 28,104" N	20° 39' 38,286" E
12	52° 18' 26,874" N	20° 39' 39,342" E	12	52° 18' 27,396" N	20° 39' 40,662" E
13	52° 18' 26,460" N	20° 39' 41,832" E	13	52° 18' 26,214" N	20° 39' 42,672" E
14	52° 18' 27,912" N	20° 39' 42,684" E	14	52° 18' 27,834" N	20° 39' 42,342" E
15	52° 18' 29,058" N	20° 39' 42,726" E	15	52° 18' 28,692" N	20° 39' 43,602" E
16	52° 18' 30,834" N	20° 39' 42,726" E	16	52° 18' 30,276" N	20° 39' 44,022" E
17	52° 18' 32,148" N	20° 39' 42,162" E	17	52° 18' 33,048" N	20° 39' 44,040" E
18	52° 18' 33,630" N	20° 39' 41,424" E	18	52° 18' 33,432" N	20° 39' 42,942" E
19	52° 18' 35,148" N	20° 39' 40,254" E	19	52° 18' 34,962" N	20° 39' 42,318" E
20	52° 18' 37,074" N	20° 39' 40,626" E	20	52° 18' 35,328" N	20° 39' 41,046" E
21	52° 18' 38,532" N	20° 39' 39,402" E	21	52° 18' 37,290" N	20° 39' 39,288" E
22	52° 18' 40,224" N	20° 39' 38,718" E	22	52° 18' 39,936" N	20° 39' 38,520" E
23	52° 18' 42,078" N	20° 39' 37,590" E	23	52° 18' 41,082" N	20° 39' 37,176" E
24	52° 18' 43,428" N	20° 39' 38,130" E	24	52° 18' 42,714" N	20° 39' 37,626" E
25	52° 18' 42,942" N	20° 39' 40,956" E	25	52° 18' 43,434" N	20° 39' 41,304" E
26	52° 18' 42,144" N	20° 39' 43,176" E	26	52° 18' 41,382" N	20° 39' 43,800" E
27	52° 18' 40,074" N	20° 39' 45,270" E	27	52° 18' 39,990" N	20° 39' 47,412" E
28	52° 18' 38,664" N	20° 39' 46,656" E	28	52° 18' 38,412" N	20° 39' 47,190" E
29	52° 18' 36,900" N	20° 39' 47,316" E	29	52° 18' 37,356" N	20° 39' 48,612" E
30	52° 18' 35,472" N	20° 39' 48,444" E	30	52° 18' 35,712" N	20° 39' 50,088" E
31	52° 18' 34,170" N	20° 39' 49,260" E	31	52° 18' 34,104" N	20° 39' 48,702" E
32	52° 18' 33,024" N	20° 39' 49,962" E	32	52° 18' 33,240" N	20° 39' 47,940" E
33	52° 18' 31,380" N	20° 39' 51,294" E	33	52° 18' 31,002" N	20° 39' 48,030" E
34	52° 18' 29,598" N	20° 39' 51,540" E	34	52° 18' 29,970" N	20° 39' 49,146" E
35	52° 18' 28,260" N	20° 39' 51,720" E	35	52° 18' 28,062" N	20° 39' 49,446" E
36	52° 18' 26,610" N	20° 39' 51,366" E	36	52° 18' 26,664" N	20° 39' 49,386" E
37	52° 18' 24,504" N	20° 39' 50,268" E	37	52° 18' 25,260" N	20° 39' 49,686" E
38	52° 18' 22,170" N	20° 39' 49,068" E	38	52° 18' 22,194" N	20° 39' 50,514" E
39	52° 18' 20,418" N	20° 39' 48,750" E	39	52° 18' 21,024" N	20° 39' 50,022" E
40	52° 18' 20,958" N	20° 39' 56,958" E	40	52° 18' 20,027" N	20° 39' 56,513" E
41	52° 18' 22,428" N	20° 39' 57,828" E	41	52° 18' 21,648" N	20° 39' 57,239" E
42	52° 18' 23,694" N	20° 39' 58,188" E	42	52° 18' 23,472" N	20° 39' 57,888" E
43	52° 18' 25,668" N	20° 39' 57,882" E	43	52° 18' 25,056" N	20° 39' 56,118" E
44	52° 18' 27,372" N	20° 39' 57,414" E	44	52° 18' 27,492" N	20° 39' 56,928" E
45	52° 18' 28,656" N	20° 39' 57,330" E	45	52° 18' 29,244" N	20° 39' 57,294" E
46	52° 18' 30,024" N	20° 39' 57,366" E	46	52° 18' 30,642" N	20° 39' 56,616" E
47	52° 18' 31,872" N	20° 39' 57,492" E	47	52° 18' 31,530" N	20° 39' 57,906" E
48	52° 18' 33,210" N	20° 39' 58,554" E			
49	52° 18' 34,974" N	20° 39' 59,022" E			
50	52° 18' 36,810" N	20° 39' 58,788" E			

Table 8S. Biodiversity at the genetic level in the analysed locations: Na—number of alleles; Ne—effective number of alleles ;No. Private alleles - numbers private alleles by analysed populations; h—diversity.

Population	S (F1)	S (F2)	CG (F1)	CG (F2)	Gr (F1)	Gr (F2)	Wi (F1)	Wi (F2)	W (F1)	W (F2)	KG (F1)	KG (F2)	N (F1)	N (F2)
Na	4,5	3,5	3,7	3,8	4,0	4,0	4,2	3,8	4,0	3,5	4,0	4,2	4,2	4,0
Na Freq. >= 5%	3,0	2,3	3,3	3,2	3,2	3,0	2,8	2,5	2,7	3,5	2,8	3,2	2,5	3,7
Ne	2,3	1,8	2,3	2,2	2,1	2,1	2,2	2,0	2,2	2,4	2,3	2,0	2,0	2,1
No. Private Alleles	0,5	0,2	0,0	0,0	0,0	0,3	0,3	0,0	0,0	0,0	0,2	0,3	0,0	0,2
h	0,5	0,4	0,5	0,5	0,5	0,5	0,5	0,4	0,5	0,5	0,5	0,5	0,4	0,5

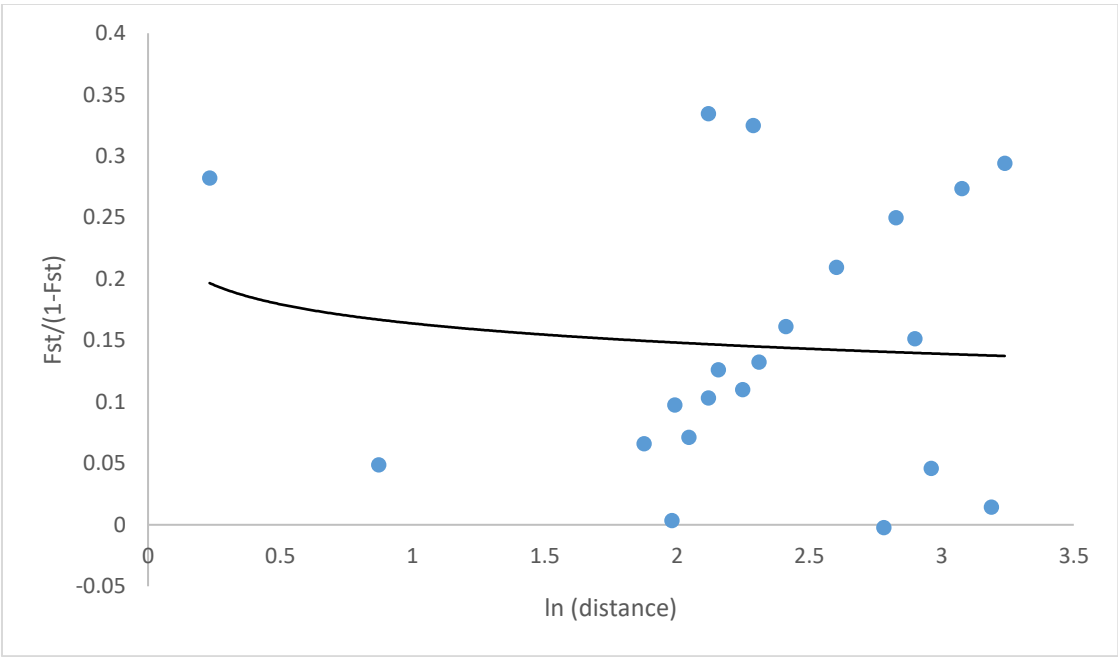


Figure 1S. Correlation of geographical and genetic distance in IBD Mantel [30] for F1.

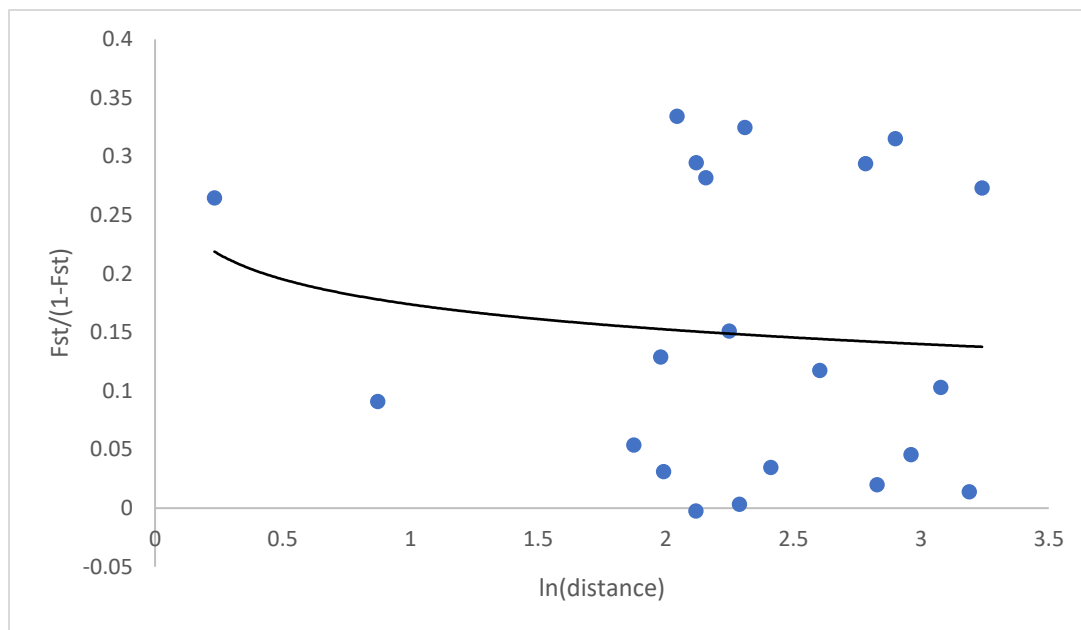


Figure 2S. Correlation of geographical and genetic distance in IBD Mantel [30] for F2.