

Figure S1. Tracks of each reconstructed VTG and VTG-like (BGBP1 and 2) of *P. clarkii*. In yellow is shown the Open Reading Frame (ORF) and the bars represents the reads mapping each transcript. Blue: paired-end reads, Red: Reverse unpaired reads, Green: Forward unpair reads (Images from CLC Workbench v12, edited with GIMP 2.8.18).

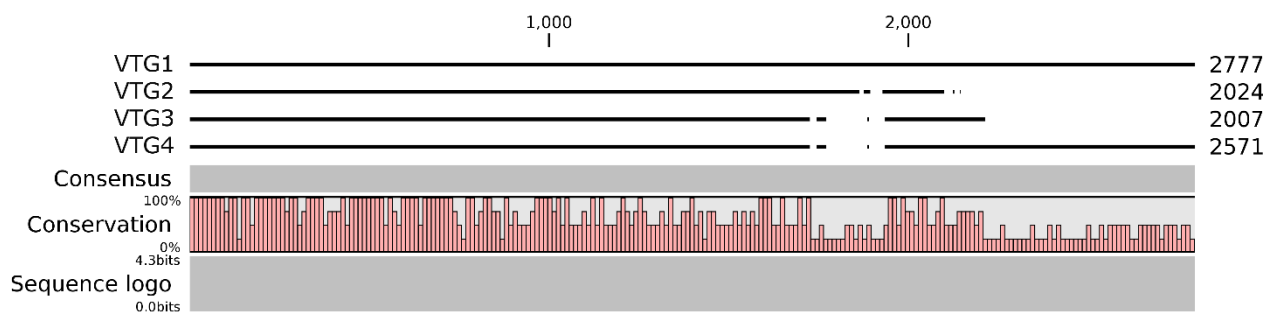


Figure S2. Schematic alignment of the 4 VTGs retrieved from the ATLAS of *P. clarkii*. Lengths in aminoacid are provided at the end of each peptide.