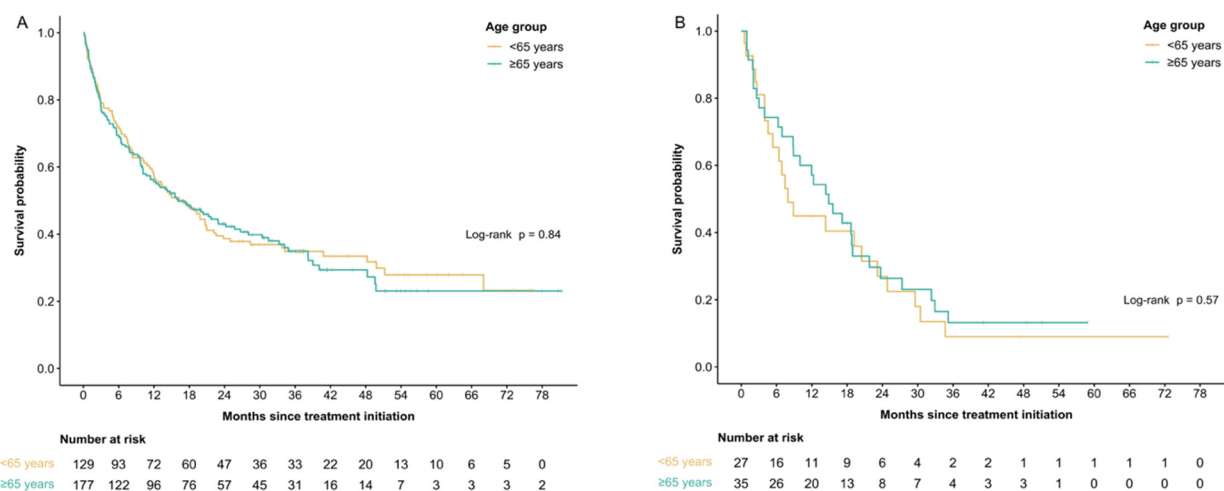
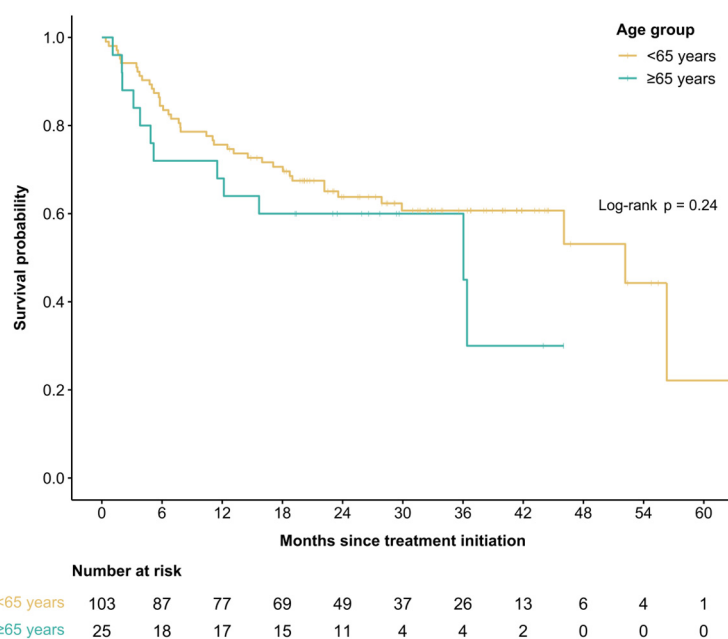


**Figure S1.** Kaplan-Meier curves of treatment duration amongst patients aged <65 and ≥65 years-old excluding combination immunotherapy for all melanoma (A), cutaneous melanoma only (B), and non-cutaneous melanoma only (C).



**Figure S2.** Kaplan – Meier curves for median overall survival amongst patients aged <65 and ≥65 years-old, when patients receiving combination immunotherapy were excluded for cutaneous melanoma patients only (A), and non-cutaneous melanoma only (B).



**Figure S3.** Kaplan – Meier curves for median overall survival amongst patients aged <65 and ≥65 years-old when stratified by patients treated with combination immunotherapy (ipilimumab and nivolumab).

**Supplemental Table S1.** Univariate and multivariate analyses of baseline factors associated with overall survival in all patients.

Characteristic	Univariate Cox regression model, all patients		Multivariate Cox regression model, all patients	
	OS HR (95% CI)	p-value	OS HR (95% CI)	p-value
<b>Age</b>				
<65 (reference) vs. ≥65	1.27 (1.01-1.58)	<b>0.04</b>	1.02 (0.77-1.34)	0.92
<b>Sex</b>				
Female (reference) vs. Male	1.10 (0.87-1.39)	0.43	1.21 (0.92-1.59)	0.17
<b>IO drug</b>				
Anti-PD-1 (reference) vs. Ipilimumab + nivolumab	0.48 (0.36-0.65)	<b>&lt;0.001</b>	0.58 (0.40-0.85)	<b>0.006</b>
<b>Melanoma type</b>				
Cutaneous (reference) vs. Non-cutaneous	1.47 (1.11-1.95)	<b>0.008</b>	1.38 (1.00-1.91)	0.05
<b>Treatment line</b>				
First (reference) vs. Other	1.84 (1.46-2.32)	<b>&lt;0.001</b>	1.44 (1.08-1.92)	<b>0.01</b>
<b>dNLR</b>				
≤3 (reference) vs. >3	2.13 (1.63-2.79)	<b>&lt;0.001</b>	1.48 (1.07-2.04)	<b>0.02</b>
<b>LDH</b>				
Normal (reference) vs. Elevated	2.28 (1.77-2.94)	<b>&lt;0.001</b>	2.03 (1.56-2.64)	<b>&lt;0.001</b>
<b>ECOG status</b>				
<2 (reference) vs. ≥2	2.36 (1.76-3.18)	<b>&lt;0.001</b>	1.54 (1.06-2.23)	<b>0.02</b>
<b>M stage</b>				
1a/1b (reference) vs. 1c/1d	1.90 (1.51-2.39)	<b>&lt;0.001</b>	1.45 (1.11-1.90)	<b>0.007</b>

**Supplemental Table S2.** Univariate and multivariate analyses of baseline factors associated with overall survival in cutaneous patients.

Characteristic	Univariate Cox regression model		Multivariate Cox regression model	
	OS HR (95% CI)	p-value	OS HR (95% CI)	p-value
<b>Age</b>				
<65 (reference) vs. ≥65	1.30 (1.01-1.67)	<b>0.04</b>	1.09 (0.79-1.51)	0.59
<b>Sex</b>				
Female (reference) vs. Male	1.12 (0.85-1.46)	0.42	1.16 (0.85-1.59)	0.35
<b>dNLR</b>				
≤3 (reference) vs. >3	2.14 (1.59-2.87)	<b>&lt;0.001</b>	1.52 (1.06-2.16)	<b>0.02</b>
<b>LDH</b>				
Normal (reference) vs. Elevated	2.32 (1.75-3.08)	<b>&lt;0.001</b>	2.07 (1.54-2.77)	<b>&lt;0.001</b>
<b>ECOG status</b>				
<2 (reference) vs. ≥2	2.69 (1.93-3.75)	<b>&lt;0.001</b>	1.93 (1.28-2.92)	<b>0.002</b>
<b>M stage</b>				
1a/1b (reference) vs. 1c/1d	1.86 (1.44-2.39)	<b>&lt;0.001</b>	1.35 (1.00-1.83)	<b>0.0499</b>
<b>BRAF mutation</b>				
No (reference) vs. Yes	1.16 (0.89-1.52)	0.27		
<b>IO drug</b>				
Anti-PD-1 (reference) vs. Ipilimumab + nivolumab	0.50 (0.36-0.70)	<b>&lt;0.001</b>	0.67 (0.44-1.03)	0.07
<b>Treatment line</b>				
First (reference) vs. Other	1.97 (1.53-2.54)	<b>&lt;0.001</b>	1.66 (1.20-2.29)	<b>0.002</b>

**Supplemental Table S3.** Propensity score matching covariates by treatment group before and after matching, patients aged <65 years with cutaneous melanoma.

Characteristic	Pre-match		SMD	Post-match		SMD
	Anti-PD-1, N = 102	Ipilimumab + nivolumab, N = 75		Anti-PD-1, N = 43	Ipilimumab + nivolumab, N = 43	
<b>Sex</b>			0.243			0.248
Female	46 (45.1%)	25 (33.3%)		17 (39.5%)	12 (27.9%)	
Male	56 (54.9%)	50 (66.7%)		26 (60.5%)	31 (72.1%)	
<b>ECOG status</b>			0.347			<0.001
<2	88 (86.3%)	72 (96.0%)		40 (93.0%)	40 (93.0%)	
≥2	14 (13.7%)	3 (4.0%)		3 (7.0%)	3 (7.0%)	
<b>LDH</b>			0.095			0.110
Normal	69 (67.6%)	54 (72.0%)		34 (79.1%)	32 (74.4%)	
Elevated	33 (32.4%)	21 (28.0%)		9 (20.9%)	11 (25.6%)	
<b>dNLR</b>			0.389			0.076
≤3	80 (78.4%)	69 (92.0%)		38 (88.4%)	39 (90.7%)	
>3	22 (21.6%)	6 (8.0%)		5 (11.6%)	4 (9.3%)	
<b>M stage</b>			0.033			0.286
1a/1b	50 (49.0%)	38 (50.7%)		22 (51.2%)	28 (65.1%)	
1c/1d	52 (51.0%)	37 (49.3%)		21 (48.8%)	15 (34.9%)	
<b>Treatment line</b>			1.279			<0.001
First	42 (41.2%)	69 (92.0%)		37 (86.0%)	37 (86.0%)	
Other	60 (58.8%)	6 (8.0%)		6 (14.0%)	6 (14.0%)	

**Supplemental Table S4.** Propensity score matching covariates by treatment group before and after matching, patients aged <65 years with cutaneous melanoma.

Characteristic	Pre-match		SMD	Post-match		SMD
	Anti-PD-1, N = 138	Ipilimumab + nivolumab, N = 18		Anti-PD-1, N = 17	Ipilimumab + nivolumab, N = 17	
<b>Sex</b>			0.264			<0.001
Female	38 (27.5%)	3 (16.7%)		3 (17.6%)	3 (17.6%)	
Male	100 (72.5%)	15 (83.3%)		14 (82.4%)	14 (82.4%)	
<b>ECOG status</b>			0.582			<0.001
<2	118 (85.5%)	18 (100.0%)		17 (100.0%)	17 (100.0%)	
≥2	20 (14.5%)	0 (0.0%)		0 (0.0%)	0 (0.0%)	
<b>LDH</b>			0.015			<0.001
Normal	91 (65.9%)	12 (66.7%)		12 (70.6%)	12 (70.6%)	
Elevated	47 (34.1%)	6 (33.3%)		5 (29.4%)	5 (29.4%)	
<b>dNLR</b>			0.215			<0.001
≤3	103 (74.6%)	15 (83.3%)		14 (82.4%)	14 (82.4%)	
>3	35 (25.4%)	3 (16.7%)		3 (17.6%)	3 (17.6%)	
<b>M stage</b>			0.343			<0.001
1a/1b	69 (50.0%)	6 (33.3%)		6 (35.3%)	6 (35.3%)	
1c/1d	69 (50.0%)	12 (66.7%)		11 (64.7%)	11 (64.7%)	
<b>Treatment line</b>			0.856			<0.001
First	101 (73.2%)	18 (100.0%)		17 (100.0%)	17 (100.0%)	
Other	37 (26.8%)	0 (0.0%)		0 (0.0%)	0 (0.0%)	