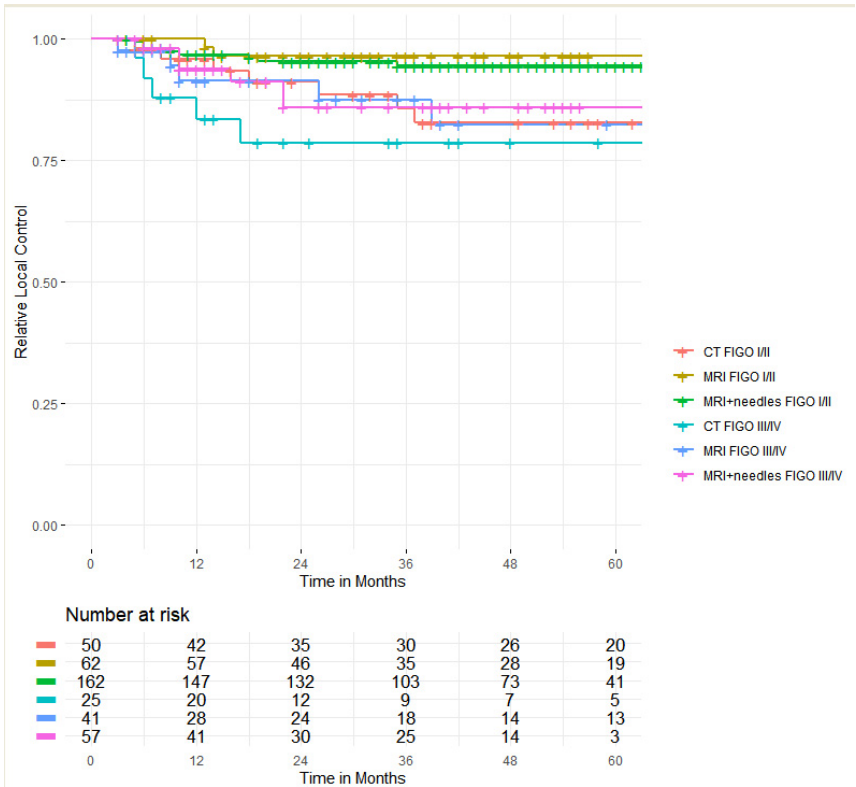
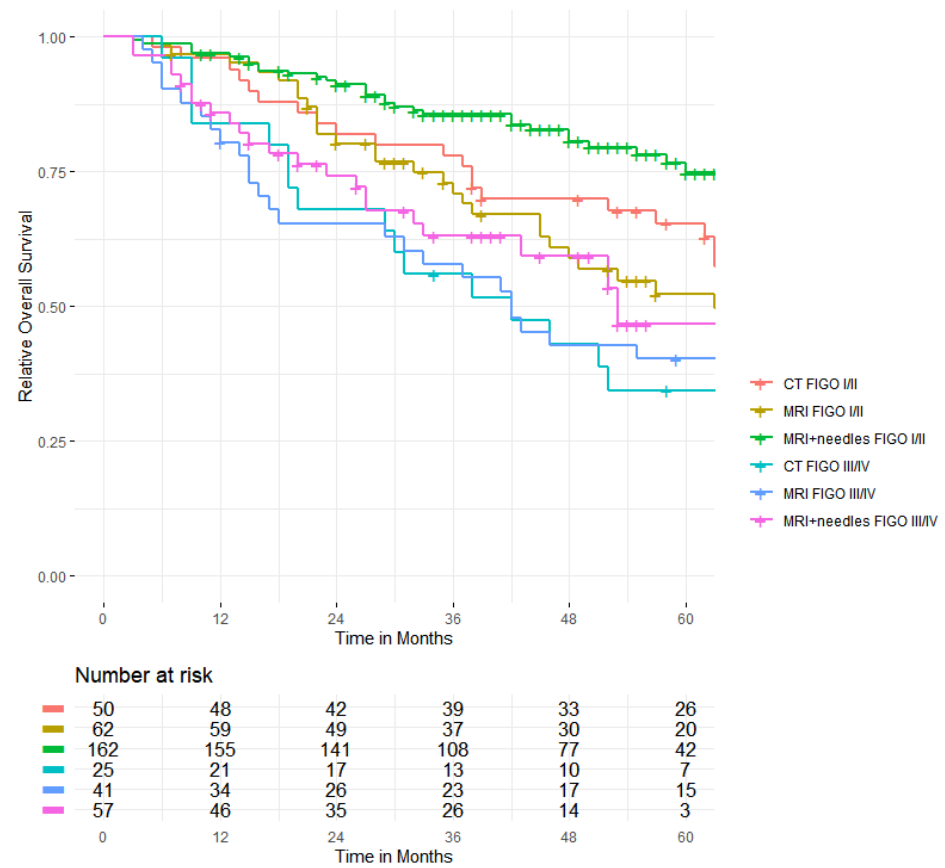


# The Effect of Contemporary Brachytherapy Practices on Prognosis in Women with Locally Advanced Cervical Cancer

Supplementary Materials



A



B

**Figure S1.** (A) Kaplan-Meier probability estimates for local control stratified per treatment era (CT, MRI, and MRI+needles group) for FIGO stage I/II and FIGO stage III/IV; (B): Kaplan-Meier probability estimates for overall survival stratified per treatment group (CT, MRI, and MRI+needles group) for FIGO stage I/II and FIGO stage III/IV.